

Professional Design Fast Installation Wide Span Workshop Building Prefabricated Structure Workshop Steel Bonded Warehouse

Our Product Introduction

for more products please visit us on baodupanel.com

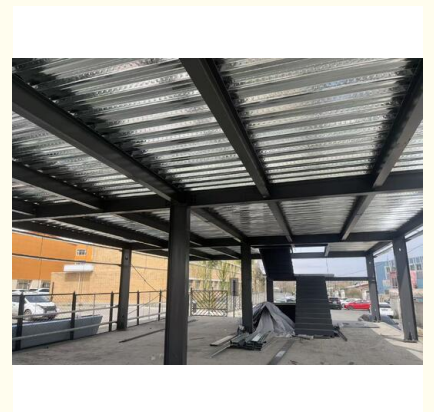
Basic Information

- Brand Name: Baodu
- Certification: CE
- Model Number: Warehouse
- Minimum Order Quantity: 600sqm
- Price: Customized
- Packaging Details: In General, For Steel Structure , We Use The Steel Frame Packing To Keep Goods Not To Be Broken . For Sandwich Panel And Color Steel Sheet, We Use The Plastic Packing . If The Clients Need Special Packing Will According To Their Requirements.
- Delivery Time: 30days
- Payment Terms: L/C,D/A,D/P,T/T,Western Union,MoneyGram
- Supply Ability: 100000 Square Meter/Square Meters Per Month



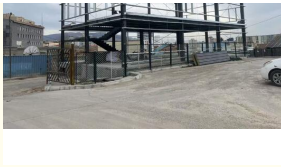
Product Specification

- Product Name: Professional Design Fast Installation Wide Span Workshop Building Prefabricated Structure Workshop Steel Bonded Warehouse
- Surface Treatment: Painted / Hot Dip Galvanized
- Wall&Roof: Sandwich Panels/single Steel
- Wind Resistance: Up To 180km/h
- Window: PVC Or Aluminum Can Be Chosen
- Application: Steel Warehouse
- Material: Q235, Q355, S355JR, S355J0,A36, A572
- After-sale Service: Online Technical Support, Onsite Installation, Onsite Training, Onsite Inspection, Free Spare Parts, Return And Replacement
- Keyword: Steel Shed Steel Structure Workshop



More Images





Product Description

Professional Design Fast Installation Wide Span Workshop Building Prefabricated Structure Workshop Steel Bonded Warehouse

Product Description:

The professional prefabricated steel structure workshop and bonded warehouse is a modern, high-efficiency industrial building solution tailored for factory production, cargo storage, bonded logistics, and large-scale industrial operations. Adopting standardized pre-engineered steel frame design, this building integrates professional structural optimization, rapid modular installation, wide-span column-free space and durable steel bonding construction technology, perfectly solving the points of traditional industrial buildings such as long construction cycles, limited space layout, high comprehensive costs and poor structural stability. It is an ideal choice for modern manufacturing factories, logistics bonded parks, industrial workshops and storage warehouses worldwide.

All structural components are prefabricated and processed in the factory with precise dimensional calibration, realizing fully bolted on-site assembly without complex welding and concrete pouring operations. The whole building features strong overall rigidity, excellent wind and earthquake resistance, and flexible customizable design, which can adapt to various terrain conditions and industrial functional requirements.

Core Competitive Advantages :

1. Professional Customized Design:

We provide one-stop professional engineering design services based on international industrial building standards and customer's actual production and storage demands. The design team optimizes the overall structure, load-bearing system, ventilation, lighting, fire protection and drainage scheme in a targeted manner. It supports single-span, multi-span, single-story and multi-layer structural customization, and can be matched with overhead cranes, mezzanine floors, partition walls, thermal insulation and dust-proof systems according to operational needs. All design solutions comply with national steel structure specifications and international building codes, ensuring structural safety, functional practicality and appearance neatness.

2. Ultra-Fast On-Site Installation:

Different from traditional cast-in-place buildings, this prefabricated steel structure building adopts full factory prefabrication and modular production. All steel columns, beams, purlins, roof and wall panels are pre-processed, polished and anti-corrosion treated in the factory. On-site construction only requires bolt assembly and sealing installation, which greatly shortens the construction cycle. Compared with traditional concrete workshops, the construction period is shortened by 50%-70%, effectively reducing site labor costs, construction management costs and early investment cycle costs, and enabling customers to put the workshop and warehouse into operation quickly.

3. Super Wide Span & Space Utilization:

The product adopts advanced portal frame wide-span structural technology, realizing large clear-span space without internal support columns. The single clear span can reach 15m-150m, and the eave height ranges from 6m to 40m, with flexible bay spacing adjustment. The column-free internal space completely breaks the space limitation of traditional buildings, facilitating the layout of large production equipment, assembly lines, forklift transportation and bulk cargo stacking. The space utilization rate is increased by more than 30%, which is very suitable for large-scale production workshops and high-capacity bonded warehouses.

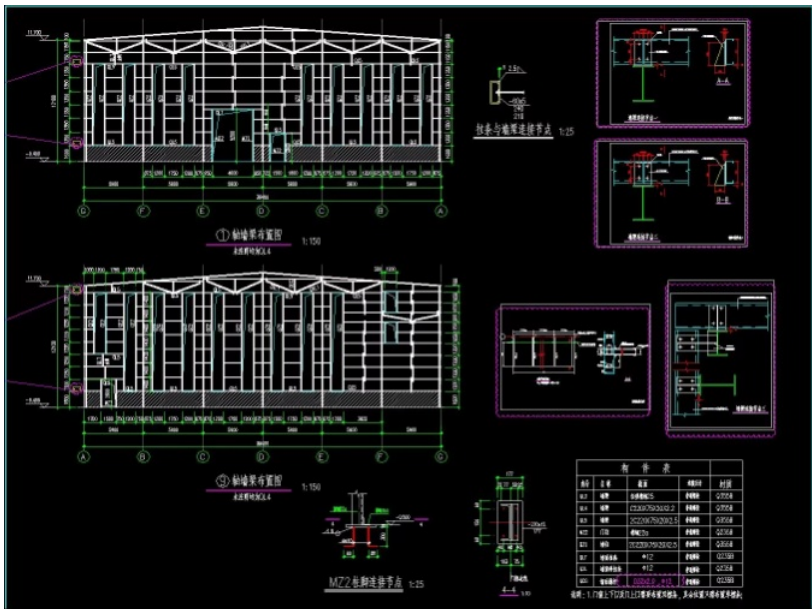
4. Durable Steel Bonded Structure & High Safety:

The main frame adopts high-strength Q235B/Q355B national standard steel, with hot-dip galvanized or multi-layer anti-rust paint treatment on the surface. The steel bonding connection process enhances the overall structural integrity, with strong load-bearing capacity, wind resistance, earthquake resistance and snow pressure resistance. The whole building has stable mechanical performance, not easy to deform or crack, and the service life can reach 40-50 years under normal use and regular maintenance. In addition, it is equipped with standardized fireproof, waterproof, anti-corrosion and heat insulation systems, adapting to high temperature, rainy, windy and other harsh working environments, ensuring long-term stable operation of the building.

5. Energy-Saving & Eco-Friendly & Cost-Effective:

The steel structure materials are 100% recyclable, with no construction waste on site, meeting global green building and environmental protection standards. The roof and wall adopt high-efficiency thermal insulation color steel sandwich panels, which effectively reduce indoor temperature fluctuation, reduce air conditioning and ventilation energy consumption, and realize energy saving and consumption reduction. At the same time, the lightweight steel structure reduces the foundation bearing requirement, greatly saving foundation construction costs. The overall comprehensive investment cost is 20%-40% lower than that of traditional concrete buildings, with lower later maintenance costs and higher cost performance.

Technical Parameters:



AUTODESK AUTOCAD
 PKPM 2010
 3D3S
 SAP 2000
 Tekla Structures
 3DS MAX

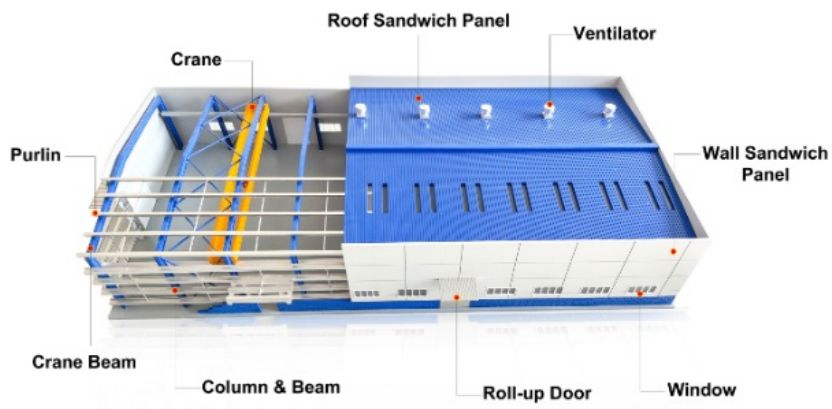
Applications:



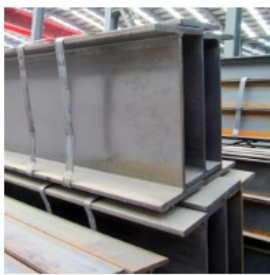




Customization:



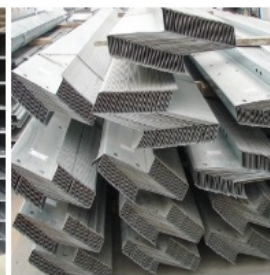
Products Materials



H-beam



C purlin



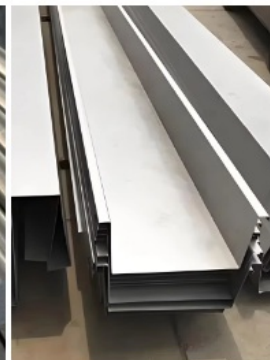
Z purlin



Angle steel



Round bar

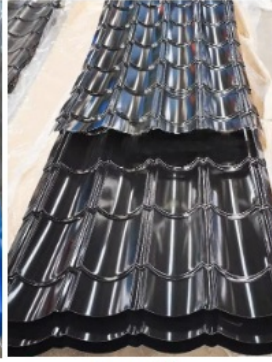


Gutter

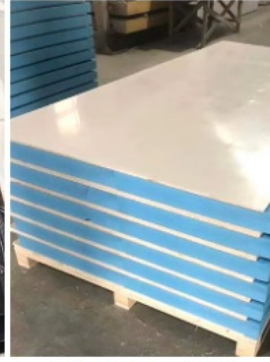
Wall & Roof Material



Single steel sheet



Glazed tile



Extruded board XPS



Eps sandwich panel



Rockwool sandwich panel



PU sandwich panel



Pulling rivet



High strength bolt



Foundation bolt



Expansion bolt



Self tapping screw



Ventilation equipment on roof



Rainwater Pipe



Ventilation Shutters



Electric rolling shutter door



Plastic steel window



Pedestrian access door

Support and Services:

We provide full-cycle one-stop services from design, production, transportation, installation to after-sales maintenance. First, according to customer's site conditions, functional demands and budget, we complete professional structural design and scheme confirmation; then carry out standardized factory prefabrication and quality inspection; after finished product inspection, we arrange container transportation to the project site; finally, professional construction team completes rapid on-site assembly and commissioning. All products are strictly inspected in accordance with international standards, with reliable quality and complete after-sales guarantee, ensuring customers obtain high-quality, high-efficiency and long-service-life industrial building solutions.

Packing and Shipping:

Our Prefab Steel Warehouse is carefully packaged to ensure safe delivery and easy installation. The packaging includes protective coverings for all steel components to prevent damage during transit. All parts are clearly labeled and bundled according to the assembly instructions for efficient unloading and construction on site.

For shipping, the warehouse components are securely loaded into containers or onto flatbed trucks depending on the size and destination. We coordinate with reliable logistics partners to handle transportation, ensuring timely and safe delivery to your location. Additionally, we provide detailed packing lists and shipping documents to facilitate smooth customs clearance and receipt.

FAQ:

Q1: What is the brand and model number of this prefab steel warehouse?

A1: The prefab steel warehouse is branded as Baodu, and the model number is Warehouse.

Q2: Where is the place of origin for the Baodu prefab steel warehouse?

A2: The Baodu prefab steel warehouse is manufactured in Hebei, China.

Q3: What is the minimum order quantity for this prefab steel warehouse?

A3: The minimum order quantity for the Baodu prefab steel warehouse is 600 square meters.

Q4: What are the packaging details for the prefab steel warehouse?

A4: Steel structures are packed using steel frame packing to prevent damage. Sandwich panels and color steel sheets are packed with plastic. Special packing options are available upon client request.

Q5: What is the typical delivery time and payment terms for the Baodu prefab steel warehouse?

A5: The delivery time is typically 30 days. Payment terms accepted include L/C, D/A, D/P, T/T, Western Union, and MoneyGram.

Q6: What certifications does the Baodu prefab steel warehouse have?

A6: The Baodu prefab steel warehouse is certified with CE certification.

Q7: What is the supply capacity of the Baodu prefab steel warehouse?

A7: Baodu can supply up to 100,000 square meters of prefab steel warehouse per month.

Q8: How is the price determined for the Baodu prefab steel warehouse?

A8: The price is customized based on the specific requirements and project details.



Baodu International Advanced Construction Material Co., Ltd.



+86 13717927965



chunlei.song@baodu.com



baodupanel.com

No. 2, Yijin North Street, Daxing District, Beijing