

## Industrial Steel Shed & Warehouse Building - Prefab Metal Structure for Storage

### Our Product Introduction

#### Basic Information

- Place of Origin: Hebei, China
- Brand Name: BAODU
- Certification: ISO9001, CE
- Model Number: Steel Warehouse
- Minimum Order Quantity: Discussible
- Price: Reasonable
- Packaging Details: In general, for steel structure, we use the steel frame packing to keep goods not to be broken. For sandwich panel and color steel sheet, we use the plastic packing. If the clients need special packing will according to their requirements.
- Delivery Time: 30 days
- Payment Terms: L/C, D/A, D/P, T/T, Western Union, MoneyGram
- Supply Ability: 10000 Square Meter/Square Meters per Month



#### Product Specification

- Product Name: Industrial Steel Shed & Warehouse Building - Prefab Metal Structure For Storage
- Structure: Steel Structure Frame Welded
- Keyword: Steel Structure Building Warehouse
- Usage: Workshop Warehouse Construction Office
- Drawing Design: SAP2000/AutoCAD /PKPM /3D3S/TEKLA
- Wall & Roof: Sandwich Panel; Color Steel Sheet
- Secondary Structure: Purlin; Brace; Knee Brace Etc
- Processing Service: Bending, Welding, Decoiling, Cutting, Punching
- Bracing: Angle, Round Steel Bar, Steel Pipe
- Window: Aluminum Alloy Window; PVC
- After-sale Service: Online Technical Support, Onsite Installation,
- Installation: Online Guidance/ Installation Drawings
- Highlight: **prefab steel warehouse building, industrial metal storage shed,**

## Product Description

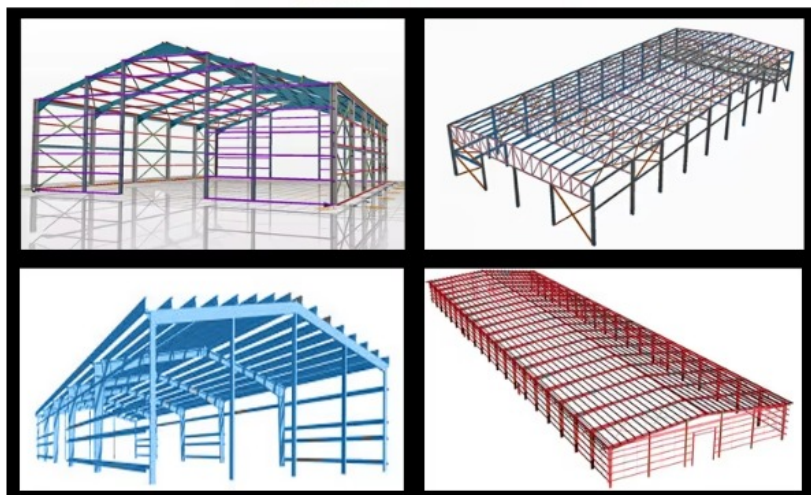
### Industrial Steel Shed & Warehouse Building - Prefab Metal Structure for Storage

One-stop provider from design and fabrication to installation for Pre-engineered Buildings and Structural Steel

Frame Column and Beam	Q355B, Q235B Welded H Section Steel
Welding	Automatic Submerged Arc Welding
Surface Processing	Coating or Galvanized
Accessories - Window	Aluminium Alloy Window / PVC Window / Sandwich Panel Window
Accessories - Door	Sliding Sandwich Panel Door / Rolling Metal Door / Fireproof Door
Maintenance System - Roof Panel	EPS Sandwich Panel / Glass Fiber Sandwich Panel / Rock Wool Sandwich Panel / PU Sandwich Panel / Steel Sheet
Maintenance System - Wall Panel	Sandwich Panel / Corrugated Steel Sheet
Service Life	Up to 50 years

From power plants to supermarkets, from stadiums to apartment buildings, we provide solutions for a scope of work covering industrial, commercial, residential and infrastructure projects. We combine expertise with invention to provide a wide variety of solutions in an age of rapidly progressing technology.

### Technical Parameters



Some information we need to know before making the price for prefab warehouse steel structure building:

Location (where will be built)	_____ country, area
Size: length*width*height	_____ mm * _____ mm * _____ mm
Wind load (max. wind speed in 50 years)	_____ kn/m <sup>2</sup> , _____ km/h, _____ m/s
Snow load (max. snow height)	_____ kn/m <sup>2</sup> , _____ mm
Anti-earthquake	_____ level

<b>Brickwall needed or not</b>	If yes, 1m or 1.2m high or 1.5m high
<b>Thermal insulation</b>	If yes, EPS, fiberglass wool, rockwool, PU sandwich panels will be suggested; if not, the metal steel sheets will be ok. The cost of the latter will be much lower than that of the former.
<b>Mezzanine</b>	If with mezzanine, what's the size and height?
<b>Door quantity &amp; size</b>	_____ units, _____ (width)mm * _____ (height)mm
<b>Window quantity &amp; size</b>	_____ units, _____ (width)mm * _____ (height)mm
<b>Crane needed or not</b>	If yes, _____ units, max. lifting weight _____ tons; max. lifting height _____ m
<b>Roof skylight panel</b>	PC / PVC / FRP
<b>Ventilator</b>	Unpowered / Powered ventilator

Our certified team of in-house engineers uses state-of-the-art software and follows the latest international design codes to optimize the weight, utility and functionality of buildings. When designing pre-engineered buildings for our customers, our highly skilled team of precision engineers implement the use of software to design tapered and reinforced structural members such as columns and rafters. These are used in tandem with Z and C-shaped secondary members such as purlins and girts, which are designed for easy overlapping, removing the need for connection plates. The end result being buildings of superior strength and durability at a fraction of the material usage.

## Applications





## Our solutions are tailored for diverse sectors:

**Industrial:** Manufacturing plants, warehouses, logistics centers, distribution hubs, aircraft hangars.

**Commercial:** Retail supermarkets, showrooms, shopping malls, office buildings.

**Agricultural:** Machinery storage, hay barns, livestock buildings, poultry farms.

**Institutional:** Sports halls, gymnasiums, schools, community centers.

**Specialized:** Multi-story buildings, car parking shades, disaster relief shelters.

## Our Service Package: From Concept to Completion

---

We are more than just a seller; we are your project partner.

### Phase 1: Design & Quotation

Provide us with your requirements (site location, intended use, dimensions, preferred specifications). We will provide detailed layout drawings, a 3D model, and a competitive quotation.

### Phase 2: Engineering & Fabrication

Upon order confirmation, we deliver full **shop drawings** for approval and proceed with fabrication under strict QC protocols.

### Phase 3: Packaging & Shipping

Components are bundled, crated, and marked for easy identification. We have extensive experience in containerization and break-bulk shipping, handling all export documentation efficiently.



## Phase 4: Support

We provide comprehensive erection manuals and are available for technical support during the assembly phase. On-site supervision can be arranged.

## Support and Services

---



## Company

---



## Frequently Asked Questions

---

### Q1: How can I get the quotation of the project?

If you have the drawing, we can offer you our quotation accordingly. If you have no design, our engineer will design for you to confirm, and then offer you a quotation.

### Q2: How about your quality control?

We have our own professional quality inspection department to control product quality, which is experienced and equipped with advanced testing equipment. Furthermore, we are also willing to accept the control of any other third-party testing institutions.

### Q3: Do you accept customization?

Yes, we offer customized products and can customize the size, color, etc. according to the customer's requirements for the building.

### Q4: Why should you buy from us not from other suppliers?

We have 20 years of experience in design and development.

### Q5: What should the client provide before you offer a complete quotation?

When we receive inquiries from customers, please provide the dimensions, drawings layout and materials of the required building. We will design the drawings based on the above information and provide competitive quotations. If the above information is not available, we will design and quote for you.

**Q6: What kind of drawing will you provide?**

Plan drawing, elevation drawing, sectional drawing, foundation drawing, installation drawing.



**Baodu International Advanced Construction Material Co., Ltd.**



+86 13717927965



chunlei.song@baodu.com



baodupanel.com

No. 2, Yijin North Street, Daxing District, Beijing