

## Innovative Design China Cheap Build Large Span Steel Structure Prefab Buildings Modern Design Metal Warehouse Workshop Factory Shed

### Our Product Introduction

#### Basic Information

- Place of Origin: Hebei, China
- Brand Name: BAODU
- Certification: ISO9001, CE
- Model Number: Steel Warehouse
- Minimum Order Quantity: 300 square meters
- Price: \$30-45 square meter
- Packaging Details: In general, for steel structure, we use the steel frame packing to keep goods not to be broken. For sandwich panel and color steel sheet, we use the plastic packing. If the clients need special packing will according to their requirements.
- Delivery Time: 30 days
- Payment Terms: L/C, D/A, D/P, T/T, Western Union, MoneyGram
- Supply Ability: 100000 Square Meter/Square Meters per Month



#### Product Specification

- Product Name: Innovative Design China Cheap Build Large Span Steel Structure Prefab Buildings Modern Design Metal Warehouse Workshop Factory Shed
- Installation Guide: Installation Drawings And Video
- Bracing: Round Bar/Angle Steel/Steel Rod
- Design: SAP2000/AutoCAD /PKPM /3D3S/TEKLA
- Corrosion Protection: Hot-Dip Galvanizing
- Design Style: Modern
- Main Structure: Galvanized Light Steel Frames
- Durability: Corrosion-resistant With Protective Coating
- Drawing Design: Customer's Requirement Or We Supply
- Surface Treatment: Painting Or Galvanized
- Material: High-quality Steel
- Packing: Standard Packing
- Fire Resistance: Fire Retardant Materials Available

## Product Description

### Innovative Design Large Span Steel Structure Prefab Buildings

Modern metal warehouse, workshop, and factory shed solutions featuring innovative design and cost-effective construction.

#### Product Features



Steel structure plants primarily consist of steel load-bearing components including steel columns, steel beams, steel structure foundations, steel roof frames, and steel roofing sheets. Walls can be enclosed with brick or other materials.

#### Key Advantages

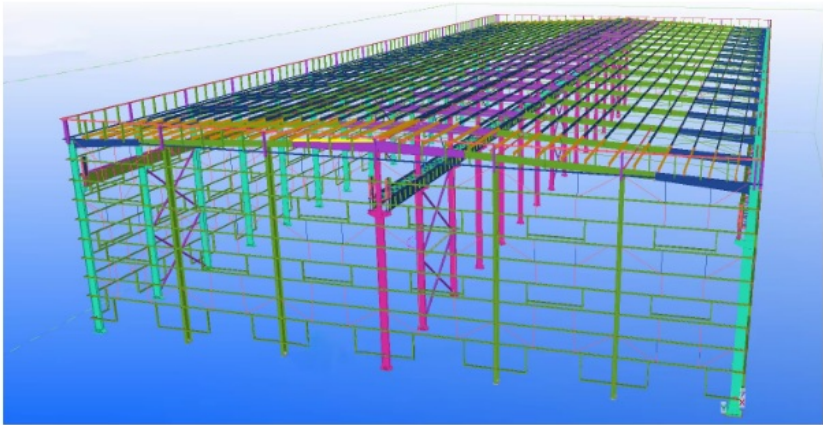
- Lightweight construction with high strength and large span capabilities
- Short construction period reducing overall investment costs
- Easy to relocate, recyclable, and environmentally friendly

#### Material Specifications

Component	Specifications
Project Sample	Steel structure warehouse
Building Size	Customizable (e.g., 78×30×8.5m)
Steel Column	H(300-550)×200×6×10 mm, Steel Q345
Steel Beam	H(300-550)×180×6×8 mm, H 300×180×6×8 mm, Steel Q345
Roof Purlin	C180×75×50×2.5 mm
Wall Purlin	C180×75×50×2.5 mm
Cross Support	20 round steel bar, Steel Q235
Column Bracing	20 round steel bar, Steel Q235
Angle Brace	L 50×4 Angle steel, Steel Q235
Tie Bar	89×3 mm, Steel Q235
Roof Panel	50/80/100/120/150/200 mm sandwich panel (EPS, PU, Rock wool, Glass wool)
Wall Panel	50/75/100/120/150/200 mm sandwich panel (EPS, PU, Rock wool, Glass wool)
Rolling Up Door	Automatic rolling up door
Single Wing Door	Sandwich panel door

Window	Aluminum/PVC sliding window with single glass
Fittings	Glass adhesive, self-tapping screw, etc.
Embedded	M 24 steel Q235 process
Intensive Bolt	Grade 10.9
Ordinary Bolt	Grade 4.85

Technical Parameters

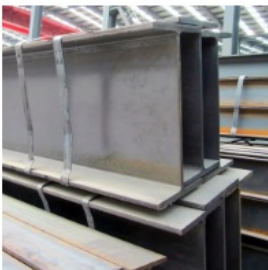


3DS MAX® 3D3S



Component Details

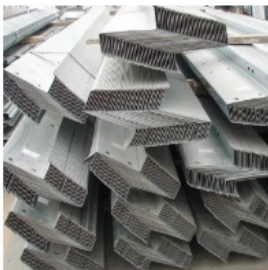
Products Materials



H-beam



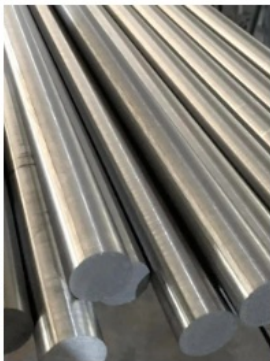
C purlin



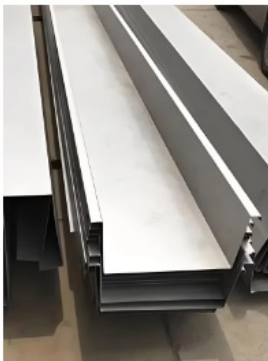
Z purlin



Angle steel



Round bar



Gutter



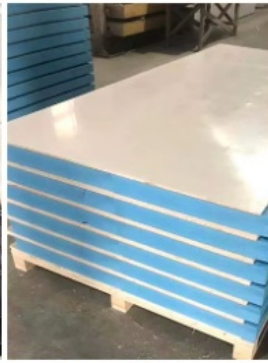
## Wall & Roof Material



Single steel sheet



Glazed tile



Extruded board XPS



Eps sandwich panel



Rockwool sandwich panel



PU sandwich panel



Puling rivet



High strength bolt



Foundation bolt



Expansion bolt



Self tapping screw



Ventilation equipment on roof



Rainwater Pipe



Ventilation Shutters



Electric rolling shutter door



Plastic steel window



Pedestrian access door

Baodu Steel Structure specializes in manufacturing steel structure warehouses, workshops, and pre-engineered buildings. Our pre-engineered steel structures incorporate primary members, secondary members, roof and wall sheeting, and various building components. Custom additions include skylights, wall lights, ventilation systems, doors, windows, trusses, mezzanine floors, crane systems, and insulation.

### Roof and Wall Project System

Protects your structure from environmental factors with advanced insulation and weatherproofing for durability and energy efficiency.

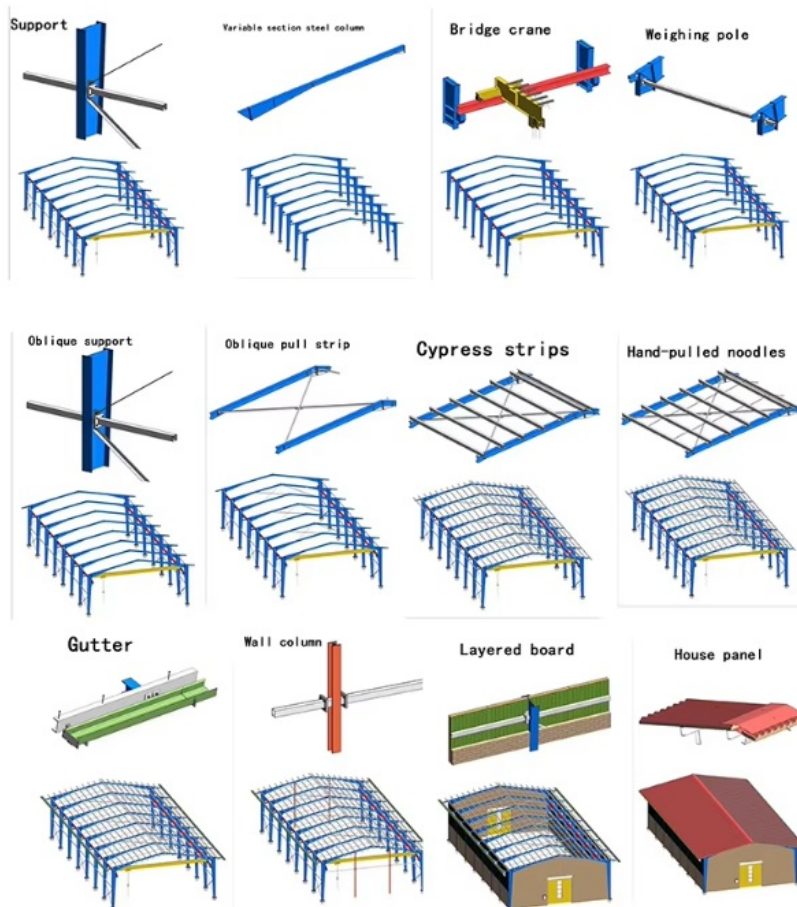
### Main Steel Frame

Provides core strength and stability to support the entire building, designed to withstand demanding conditions.

### Additional Materials

Comprehensive range of accessories and safety-enhancing features to ensure complete functionality and performance.

## Steel Building Process



## Project Cases









Steel structure buildings serve diverse applications including warehouses, workshops, factories, cold storage, high-rise buildings, shopping malls, power plants, distribution centers, pedestrian bridges, hotels, schools, sports arenas, parking centers, airplane hangars, community



centers, agricultural buildings, and commercial facilities.

## Quality Assurance



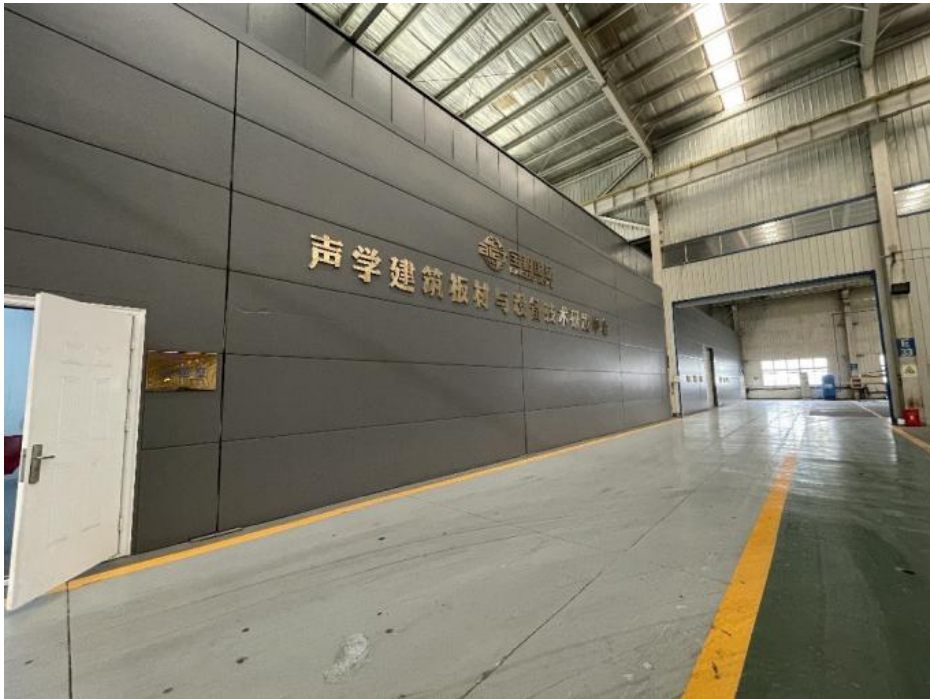
Excellent product quality is our fundamental commitment in the global market. BAODU GROUP implements comprehensive quality management throughout raw material supply, engineering design, component manufacturing, and installation.

We maintain a professional quality inspection team with advanced equipment including German GS1000 vacuum spectrometer and high-frequency infrared carbon sulfur analyzer. Our quality management has earned multiple awards and supports testing by SGS, TUV, and BV.

## Capacity and Certification



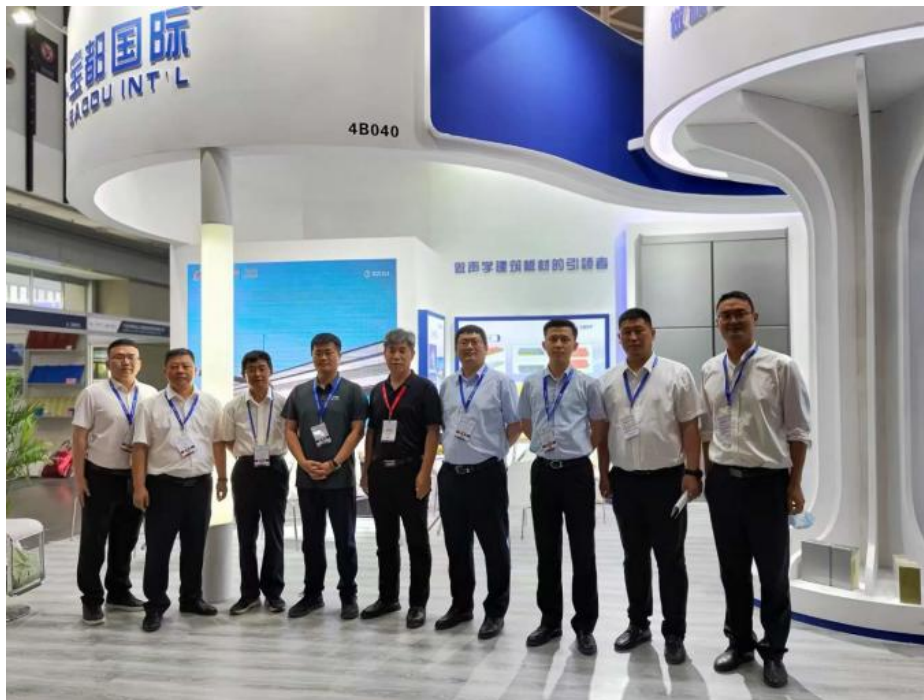




## OUR CERTIFICATE



## Support and Services













## Why Choose Our Steel Structure Factory Buildings?

Our industrial steel structures are engineered for maximum efficiency, cost-effectiveness, and long-term durability.

**Large-Span, Column-Free Interiors:** Eliminates obstructive columns for flexible production layouts

**High-Strength Steel Framework:** Built with Q355/Q235 high-strength steel for superior load-bearing capacity

**Fast Construction & Cost Efficiency:** Prefabricated components reduce installation time by 40%-60% compared to concrete buildings

**Energy-Efficient & Climate-Resilient:** Integrated ventilation, skylights, and air circulation systems for comfortable work environments

**Customizable & Scalable Solutions:** Designed for multi-story expansion with mezzanines, crane beams, and fire-resistant materials

## Company Profile

Baodu International Advanced Construction Material Co., Ltd was established in January 2010 with offices in Beijing and factory in Hebei, China. We are designers, manufacturers, suppliers, and exporters of industrial noise treatment solutions, steel structures, sandwich panels, and prefab houses.

Annual production capacity includes 6 million square meters of acoustic sandwich panels, 100,000 tons of steel structures, and 1 million square meters of floor decking sheet. Our products serve over 30 countries worldwide.

Our professional design team includes 5 senior engineers, 20 engineers, and 35 technicians with over 10 years of experience. We hold energy conservation and environmental protection intellectual property rights, construction qualifications, CE certification, and Russian GOST certification.

Notable projects include the military parade village for China's 60th anniversary, Beijing Daxing International Airport, Thar Pakistan coal-fired power plant, and Hasyan Dubai power plant.

## Packing and Shipping







### Packaging Details

Steel structure components packaged with proper protection

Sandwich panels covered with plastic film

Bolts and accessories loaded into wooden boxes

All components, panels, bolts, and accessories are packed to ocean transport standards and loaded into 40'HQ containers. Loading is performed by skilled workers using cranes and forklifts to prevent damage. We maintain strong relationships with vessel companies to ensure smooth transportation.

## FAQ



STRIVE TO SURPASS CUSTOMER'S EXPECTATIONS

### Q1. Are you trading company or factory?

A1. We have our own factory so that we can provide the best price for you.

### Q2. Where is your factory?

A2. Our factory is located in Yongqing Hebei Province which is only one

### Q3. How is your production capacity of sandwich panel?

A3. Our sandwich panel production line is imported from Europe and we can produce 3000 square meters per day.

### Q4. What are your advantages?

A4. As a high technology company in the construction material industry, we have our own technician team, most of whom have more than 10 years experience. And we also have the strict quality control in our production lines.

### Q5. What is your payment term and delivery time?

A5. We accept the T/T or L/C. And the Ali trade assurance is also acceptable. As for the delivery time, we need make the production plan for each order. Usually, it will take about 10 days after we confirm the order.

### Q6. How about the sample order?

A6. We provide free samples, but you need pay the freight for it.

### Q7. How about your After-sales policy?

A7. Baodu wants to provide the best products and service to each client. We will provide the online after-sales training. If necessary, you can visit our factory.

## Product Video



**Baodu International Advanced Construction Material Co., Ltd.**

+86 13717927965

chunlei.song@baodu.com

baodupanel.com

No. 2, Yijin North Street, Daxing District, Beijing