

Steel Structure Building Large Span Warehouse for Industrial Storage and Logistics Warehouse Storage Baodu Steel Structure

Our Product Introduction

Basic Information

- Place of Origin: Hebei, China
- Brand Name: BAODU
- Certification: ISO9001, CE
- Model Number: Steel Warehouse
- Minimum Order Quantity: 300square meters
- Price: \$30-45square meter
- Packaging Details: In general, for steel structure , we use the steel frame packing to keep goods not to be broken . For sandwich panel and color steel sheet, we use the plastic packing . If the clients need special packing will according to their requirements.
- Delivery Time: 30days
- Payment Terms: L/C, D/A, D/P, T/T, Western Union, MoneyGram
- Supply Ability: 100000 Square Meter/Square Meters per Month



Product Specification

- Product Name: Steel Structure Building Large Span Warehouse For Industrial Storage And Logistics Warehouse Storage Baodu Steel Structure
- Processing Service: Bending, Welding, Decoiling, Cutting, Punching
- Bracing: Round Bar/Angle Steel/Steel Rod
- Design: SAP2000/AutoCAD /PKPM /3D3S/TEKLA
- Using Life: More Than 50 Years
- Corrosion Protection: Hot-Dip Galvanizing
- Product Type: Steel Warehouse
- Life Time: More Than 50 Years
- Project Solution Capability: 3D Model Design
- Purlin: C.Z Shape Steel Channel
- Surface Treatment: Painting Or Galvanized
- Size: According To Customer Requirement

Product Description

Steel Structure Building Large Span Warehouse for Industrial Storage and Logistics

Custom Solutions Available

Steel construction is a customizable product designed according to your specific requirements. We support complete customization of size and color for warehouses, workshops, office buildings, exhibition halls, shopping malls, cold storage, and other steel structure applications.

Baodu brings over 30 years of experience in steel structures, providing comprehensive design, production, installation, construction, and after-sales services.



Project Requirements & Specifications

Information needed for pricing prefab warehouse steel structure:

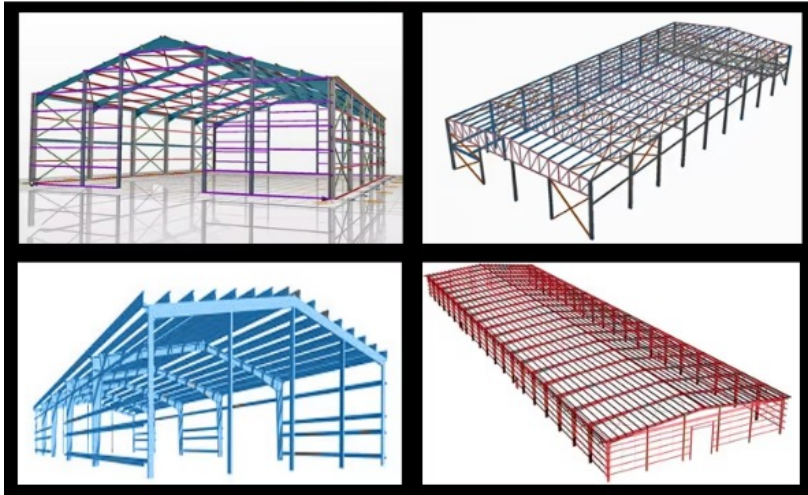
Category	Application Scenarios & Advantages
Building Structure	Portal steel frame structure: Light load, small span Frame structure: Multi-layer or medium load Truss, Grid structure: Large span, heavy load Suspended Cable Structure: Crane operation required
Number of Layers	Single layer: Convenience and large space Multilayer: Space utilization and functional zoning
Usage Function	Ordinary: Raw material warehouse, transit warehouse, etc. Refrigerate: Cold storage, cold chain logistics center, etc. Dangerous goods: Dangerous goods storage facility, oil depot, etc. Bonded: Storage of goods in international trade

Material Specifications

ITEMS	Steel Structure Warehouse
Window	Louvers, skylights, aluminum windows, PVC windows
Steel Beam	C-shaped steel, H-shaped steel, channel steel, I-beams, rectangular tubes
Steel Column	H-shaped steel columns, steel pipe columns, rectangular tubes
Cross bracing, corner braces, tie rods	Channel steel, angle steel, round steel
Column support	H-beam, channel steel, steel pipe, angle steel
Bolts	High-strength bolts, ordinary bolts
Doors	Single-wing door, sliding door, rolling shutter door, lifting door
Walls	PVC wall panel, color-coated steel sheet, sandwich panel, fiber cement board
Roof panels	Stainless steel sheet, color-coated steel sheet sandwich, color-coated steel sheet

Sandwich panels	PU (polyurethane) sandwich panel, rock wool sandwich panel, EPS sandwich panel, composite sandwich panel
Purlin	C, Z Shape Steel
Size, Color	Customized

Technical Parameters

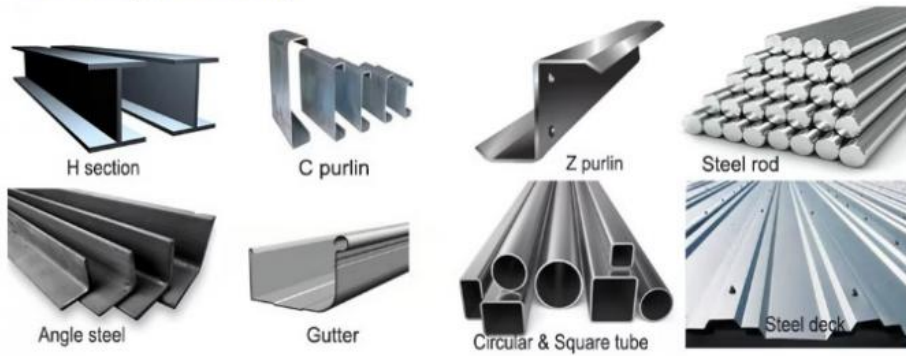


Basic design requirements and design Load:

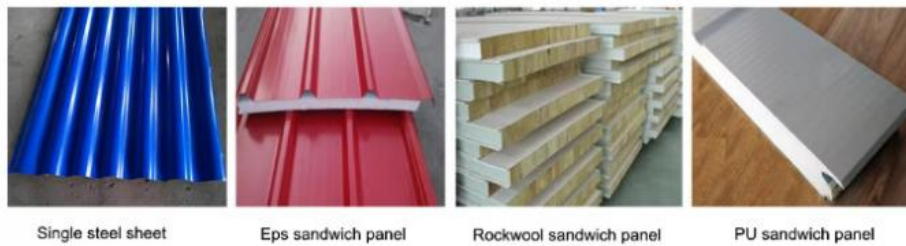
- Project site location
- Overall dimension (length*width*eave height in meters)
- Mezzanine or not? How many kgs of load per square meter on mezzanine?
- Single-layer steel sheet wall or sandwich panel wall
- Snow load if applicable
- Wind speed/load
- Interior column allowed or not
- Overhead crane needed or not, capacity?
- Any other particular requirements?

Components & Features

Main frame(column& beam)



Auxiliary system (wall& roof material)



Cost saving and transportation convenient, customer design available

The main beam and column are qualified steel

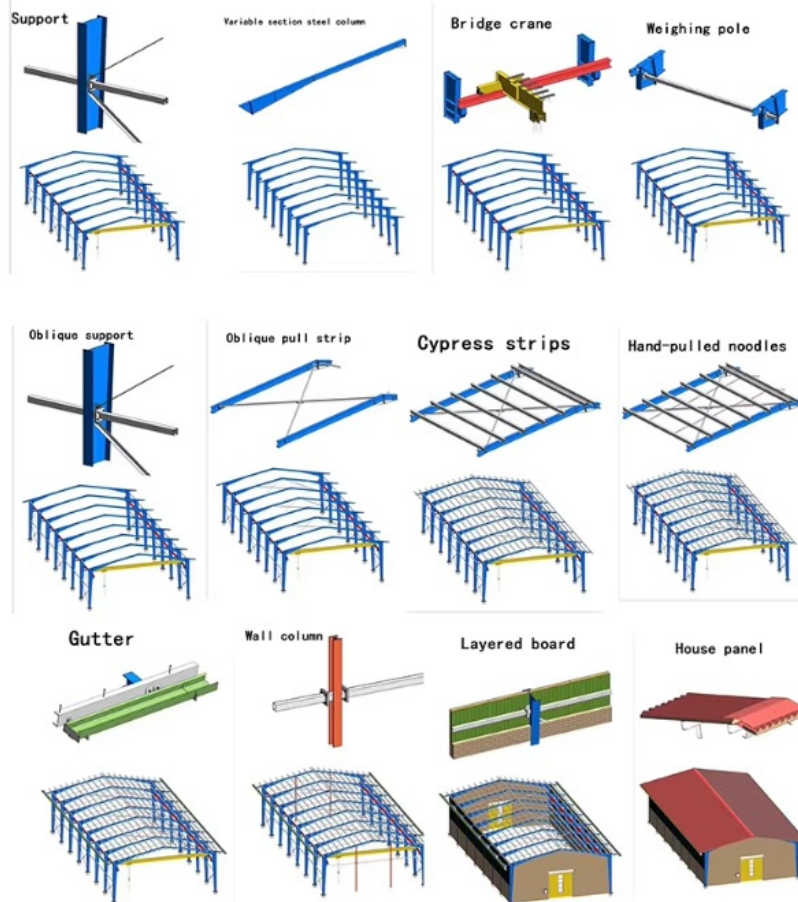
The steel structure makes the house resisting heavy wind of 140km/h and 8 grade earthquake

Good ability to assemble and disassemble for several times without damage

Widely used in construction site, office building, dormitory etc.

Environmental protection effect is good. Steel structure housing construction greatly reduces the sand, stone, the dosage of the ash, used materials mainly green, recyclable or degradation materials, building dismantled, most of the material can be recycled or degradation, won't cause much rubbish

Steel Building Process



Connection Method:

The columns are connected with the foundation by pre-embedding anchor bolt. The beams and columns, beams and beams are connected with high intensity bolts.

Construction Advantages:

- Could be designed according to different purpose and environment condition
- Long life span, could be more than 50 years
- Quick and easy install work and the more economic friendly
- Could be moved and recycle
- Strong seismic and wind resistance

Project Cases







Advantages of Steel Structure Buildings

The components of the steel structure have small section, light weight, easy to transport and installation, suitable for large span, high height, heavy bearing structure.

Suitable for withstand impact and dynamic load, with good seismic performance. The internal structure of steel is uniform with high reliability.

Factory mechanized production of steel structure components finished products of high precision, high production efficiency, site assembly speed, short construction period.

Our prefabricated steel structure buildings are pre-cut, pre-drilled, and ready for quick and efficient assembly. Steel buildings work for virtually any building application: Agricultural/Barns/Aircraft Hangars/Welding Shops/Commercial center/Garages/Storage/Suburban Buildings/Warehouses/Workshops/school/wedding hall/dormitory etc.

Strict Quality Inspection Standards



Excellent product quality is our eternal pursuit, and it is also the fundamental reason for us to base ourselves on the global market. BAODU GROUP implements whole-process quality management and strictly supervises every process such as raw material supply, engineering design, steel component manufacturing, installation and construction.

We have established a professional team of quality inspection engineers, introduced internationally leading quality inspection equipment such as German GS1000 vacuum spectrometer and high-frequency infrared carbon sulfur analyzer, established a high-quality product inspection room, and won many awards from China's advanced quality management unit.

In addition, we support testing and certification by SGS, TUV, BV.

Certification

СИСТЕМА ДОБРОВОЛЬНОЙ СЕРТИФИКАЦИИ
ПОЖАРНОЙ БЕЗОПАСНОСТИ

№ РОСС RU.32623.OC13ПБ.10362



СЕРТИФИКАТ СООТВЕТСТВИЯ

№ РОСС RU.32623.OC13ПБ.10362

(далее сертификат соответствия)

ЗАЯВИТЕЛЬ

(индивидуальное или юридическое лицо)

Общество с ограниченной ответственностью "Перспектива"
Адрес: Российская Федерация, 125167, г. Москва, вн. тер. г. муниципальный округ
Хорошевский, Пролетарский, д. 47, стр. 2, помещение 28а
ОГРН: 1247700670750, телефон: +74955181399, адрес электронной почты:
perspektiva2409@mail.ru

ИЗГОТОВИТЕЛЬ

(индивидуальное или юридическое лицо)

Baodu International Engineering Technology Co., Ltd.
Адрес: Китай, Room 1101, Building 6, No. 9 Yard, Hongye Road, Daxing District, Beijing City
Телефон: +86 010-61237405

ОРГАН ПО
СЕРТИФИКАЦИИ

(индивидуальное или юридическое лицо, осуществляющее сертификацию)

№ РОСС RU.32623.OC13ПБ Общество с ограниченной ответственностью «Эксперт»,
129090, г. Москва, вн.тер.г. муниципальный округ Мещанский, ул.
Щепкина, дом 28, помещ 2/5

Код ОКПД 2

25.11.23.119

Код ТН ВЭД

7308905100

ПОДТВЕРЖДАЕТ,
ЧТО ПРОДУКЦИЯ(информация об объекте
сертификации, подтверждающая
соответствие требованиям)

Конструкция ограждающая стеновая на основе стеновых панелей, трехслойных, с облицовкой
из стальных профилированных листов толщиной 0,6-1,0 мм, с утеплителем из минеральной
ваты с плотностью не менее 100 кг/м³, общая толщина панели 100-350 мм. Торговая марка:
BAODU.
Серийный выпуск.

СООТВЕТСТВУЕТ
ТРЕБОВАНИЯМ(технические стандарты, правила,
условия договора, на соответствие
которым (каким) производится
сертификация)

ГОСТ 30244-94 «Материалы строительные. Методы испытаний на горючесть», раздел 6,
метод 1. Материал относится к негорючим материалам (НГ). ГОСТ 32603-2021

ПРОВЕДЕННЫЕ ИССЛЕДОВАНИЯ
(ИСПЫТАНИЯ) И ИЗМЕРЕНИЯ

Протокол испытаний № ИЛ13-62792 от 23.05.2025
года, выданной Испытательной лабораторией
Общества с ограниченной ответственностью
«Эксперт», аттестат аккредитации
РОСС RU.32623.ИЛ13ПБ

Примечание:
подлинность
сертификата
подтверждается

ПРЕДСТАВЛЕННЫЕ ДОКУМЕНТЫ

(документы, представленные заявителем для
сертификации в качестве доказательств соответствия
требованиям нормативной документации)ДОПОЛНИТЕЛЬНАЯ
ИНФОРМАЦИЯ

Схема сертификации: 1с

СРОК ДЕЙСТВИЯ СЕРТИФИКАТА СООТВЕТСТВИЯ

с 23.05.2025 по 22.05.2028

Руководитель органа



О.В. Ребрин

инициалы, фамилия

Эксперт

Т.А. Сибирякова

инициалы, фамилия

Сертификат не применяется при обязательной сертификации



CERTIFICATE

ATTESTATION CERTIFICATE

The Company mentioned below has been audited by the Notified Body UDEM, according to relevant standard given below

Company Name : **Baodu International Advanced Construction Material Co., Ltd.**

Company Address : No.26, Baihe Road, Yongqing Industrial Zone, Hebei Province, China

Related Standards : **EN 14509:2013**

Product Name : **Insulated Metal Cladding**

Report No and Date : **BIACM210615001/15.06.2021**

Product Brand/Model/Type : **BD-100MM-IMC, BD-50MM-IMC, BD-75MM-IMC, BD-120MM-IMC, BD-150MM-IMC, BD-200MM-IMC**

Certificate Number : **M.2021.206.N8433**

Initial Assessment Date : **28.06.2021**

Registration Date : **29.06.2021**

Reissue Date/No : **-**

Expiry Date : **28.06.2026**


UDEM International Certification
Auditing Training Centre Industry
and Trade Inc.Co.



The currency of the certificate can be checked through www.udemtd.com.tr. The CE mark shown on the right can only be used under the responsibility of the manufacturer with the completion of EC Declaration of Conformity for all the relevant Directives. This certificate remains the property of UDEM International Certification Auditing Training Centre Industry and Trade Co. Ltd. to whom it must be returned upon request. The above named firm must keep a copy of this certificate for 15 years from the registration of certificate. The above named firm must notify all changes related with the approved type to UDEM. If UDEM will not renew expiry date of this certificate in question
Address: Mutlukent Mahallesi 2073 Sokak (Eski 93 Sokak) No:10 Çankaya - Ankara - TURKEY
Phone: +90 0312 443 03 90 Fax: +90 0312 443 03 76
E-mail: info@udemtd.com.tr www.udem.com.tr



Certificate No.: 016724020379204



CERTIFICATE OF ENVIRONMENT MANAGEMENT SYSTEM CERTIFICATION

Date of Initial Issuance Apr. 11, 2018 / Date of Re-certification Issuance Apr. 10, 2024
Date of Expiration: Apr. 10, 2027

This is to Certify that the Environment Management System of

**BAODU INT'L ADV CONSTRUCTION
MATERIALS CO., LTD.**

is in conformity with
GB/T24001-2016 idt ISO14001:2015 Standard, applies to
PRODUCTION OF STEEL STRUCTURE (INCLUDING PRODUCTION OF COLOR
PROFILED STEEL PLATE AND CONSTRUCTION METAL SURFACE INSULATION
SANDWICH PANEL)

BCC Inc.

President:



Unified social credit code 911101020379204

REGISTERED ADDRESS NO.24, BAIDE AVE, INDUSTRIAL PARK, YONGQING COUNTY, LANGFANG, HEBEI PROVINCE, P.R.C.
OPERATION ADDRESS NO.24, BAIDE AVE, INDUSTRIAL PARK, YONGQING COUNTY, LANGFANG, HEBEI PROVINCE, P.R.C.



中国认可
国际互认
管理体系
MANAGEMENT SYSTEM
CNAS C016-M



BCC Address: Room 41-01-01, Floor 1, 10-4F Changyuan Hotel, Dongcheng District, Beijing, CHINA. This certificate is valid within the scope of specified activities and qualifications. Issuance: The effectiveness of this certificate shall be maintained by regular surveillance audits, the validity of the certificate can be required through www.bcc.com.cn or by QR code. The information of this certificate available for inquiry on BCC's website: www.bcc.com.cn.



Certificate No.: 016724030008234



CERTIFICATE OF OCCUPATIONAL HEALTH AND SAFETY MANAGEMENT SYSTEM CERTIFICATION

Date of Initial Issuance Apr. 11, 2018 / Date of Re-certification Issuance Apr. 10, 2024
Date of Expiration: Apr. 10, 2027

This is to Certify that the Occupational Health and Safety Management System of

**BAODU INT'L ADV CONSTRUCTION
MATERIALS CO., LTD.**

is in conformity with
GB/T 45001-2020 idt ISO 45001:2018 Standard, applies to
PRODUCTION OF STEEL STRUCTURE (INCLUDING PRODUCTION OF COLOR
PROFILED STEEL PLATE AND CONSTRUCTION METAL SURFACE INSULATION
SANDWICH PANEL)

BCC Inc.

President:



Unified social credit code 911101020379204

REGISTERED ADDRESS NO.24, BAIDE AVE, INDUSTRIAL PARK, YONGQING COUNTY, LANGFANG, HEBEI PROVINCE, P.R.C.
OPERATION ADDRESS NO.24, BAIDE AVE, INDUSTRIAL PARK, YONGQING COUNTY, LANGFANG, HEBEI PROVINCE, P.R.C.



中国认可
国际互认
管理体系
MANAGEMENT SYSTEM
CNAS C016-M



BCC Address: Room 41-01-01, Floor 1, 10-4F Changyuan Hotel, Dongcheng District, Beijing, CHINA. This certificate is valid within the scope of specified activities and qualifications. Issuance: The effectiveness of this certificate shall be maintained by regular surveillance audits, the validity of the certificate can be required through www.bcc.com.cn or by QR code. The information of this certificate available for inquiry on BCC's website: www.bcc.com.cn.

CERTIFICATE

CERTIFICATE



Certificate No. 014724Q070182M



CERTIFICATE OF QUALITY MANAGEMENT SYSTEM CERTIFICATION

Date of Initial Issuance Apr. 11, 2018 / Date of Re-certification Issuance Apr. 10, 2024
Date of Expiration: Apr. 10, 2027

This is to Certify that the Quality Management System of

**BAODU INT'L ADV CONSTRUCTION
MATERIALS CO., LTD.**

is in conformity with
GB/T 19001-2016 idt ISO9001:2015 Standard, applies to
PRODUCTION OF STEEL STRUCTURE (INCLUDING PRODUCTION OF COLOR
PROFIED STEEL PLATE AND CONSTRUCTION METAL SURFACE INSULATION
SANDWICH PANEL)

BCC Inc.

President:



Unified social credit code 9111010203783030

REGISTERED ADDRESS NO. 24, BAIME AVE, INDUSTRIAL PARK, YONGQING COUNTY, LANGFANG, HEBEI PROVINCE, P.R.C.
OPERATION ADDRESS NO. 24, BAIME AVE, INDUSTRIAL PARK, YONGQING COUNTY, LANGFANG, HEBEI PROVINCE, P.R.C.



中国认可
国际互认
管理体系
MANAGEMENT SYSTEM
CNAS C018-M



BCC Address: Room 41-01-01, Floor 1, 10-41 Changmenwai Street, Dongcheng District, Beijing, CHINA. This certificate is valid within the scope of the certification and qualification. The validity of the certificate can be verified through the BCC website or by QR code. The information of this certificate is available for inquiry on BCC's website: www.bccgroup.com.

Company Profile

Baodu International Advanced Construction Material Co., Ltd was established in January 2010 with the office in Beijing and factory in Hebei, China. Baodu is a designer, manufacturer, supplier and exporter of industrial noise comprehensive treatment, steel structure, sandwich panel and prefab house.

Baodu has an annual output of 6 million square meters of acoustic sandwich panels, 100,000 tons of steel structures and 1 million square meters of floor decking sheet. The products are sold in more than 30 countries and regions around the world.

Baodu has a professional design team with more than 10 years' experience, including 5 senior engineers, 20 engineers, and 35 technicians. Baodu has several energy saving and environment protection intellectual property rights, construction and environment protection design qualification, CE certification and Russian GOST certification etc.

Baodu participated in the military parade village project for the 60th anniversary of China and project of Beijing Daxing International Airport. Under the guidance of China's "one belt, one road" strategy, Baodu has also undertaken overseas projects such as the project of Thar, Pakistan coal fired power plant, Hasyan Dubai power plant and so on. Finally, welcome your coming to Baodu for a visit and cooperation!

Packaging Details



Steel structure components will be in packaging with proper protection

Sandwich panels will be covered with plastic film

Bolts and other accessories will be loaded into wooden Boxes

All the structure components, panels, bolts and sorts of accessories will be well packed with standard package suitable for ocean transport and loaded into 40'HQ.

All the products are loaded at the loading site of our factory using crane and forklift by our skilled workers, who will prevent the goods to be damaged.

Good relationship with many vessel companies to make sure the transportation smooth.

Frequently Asked Questions

Q1: What are your main products?

A: Our main products have steel structure, warehouse, workshop, prefab house, container house, steel poultry shed, steel car garage, steel aircraft hangar, light steel villa, sandwich panel and other construction materials.

Q2: What will client provide before factory offers good quotation?

A: When we receive inquiry from client, client please fills purchasing intention sheet, providing us with information of house dimensions, draft drawing, layout and materials for prefabricated house. We will design the drawings and offer competitive quotation with the above information.

Q3: What are main materials of prefabricated house?

A: Our prefabricated house materials mainly include light steel structure, sandwich panel, roof tile, door, window, covers, screws and other accessories.

Q4: What drawing of house will factory supply?

A: Plan drawing, elevation drawing, sectional drawing, foundation drawing, installation drawing.

Q5: How many colors do your sandwich panels have?

A: Off-white, ivory white, blue, green, red and according to buyer's requirement.



Baodu International Advanced Construction Material Co., Ltd.



+86 13717927965



chunlei.song@baodu.com



baodupanel.com

No. 2, Yijin North Street, Daxing District, Beijing