

Free Design Prefabricated Steel Factory Industrial Modern Design Steel Structure Building for Metal Storage in Factory Warehouses

Our Product Introduction

Basic Information

- Place of Origin: Hebei, China
- Brand Name: BAODU
- Certification: ISO9001, CE
- Model Number: Steel Warehouse
- Minimum Order Quantity: 1000 square meters
- Price: \$45-65 square meter
- Packaging Details: In general, for steel structure, we use the steel frame packing to keep goods not to be broken. For sandwich panel and color steel sheet, we use the plastic packing. If the clients need special packing will according to their requirements.
- Delivery Time: 30 days
- Payment Terms: L/C, D/A, D/P, T/T, Western Union, MoneyGram
- Supply Ability: 100000 Square Meter/Square Meters per Month



Product Specification

- Product Name: Free Design Prefabricated Steel Factory Industrial Modern Design Steel Structure Building For Metal Storage In Factory Warehouses
- Processing Service: Bending, Welding, Decoiling, Cutting, Punching
- Design: SAP2000/AutoCAD /PKPM /3D3S/TEKLA
- Project Solution Capability: 3D Model Design
- Size: According To Customer Requirement
- Material: Q235B/Q345B Low Carbon Steel
- Color: Customized Color
- Roof And Wall: Corrugated/EPS/PU/Rock Wool/glass Wool
- Transportability: Easily Transported By Truck Or Ship
- Secondary Frame: C&Z Purlin, Brace
- Standard: GB Standard
- Highlight: **prefab steel warehouse building,**
industrial steel structure storage

Product Description

Prefabricated Steel Structure Building

Free design prefabricated steel factory industrial modern design steel structure building for metal storage in factory warehouses.

Product Specifications

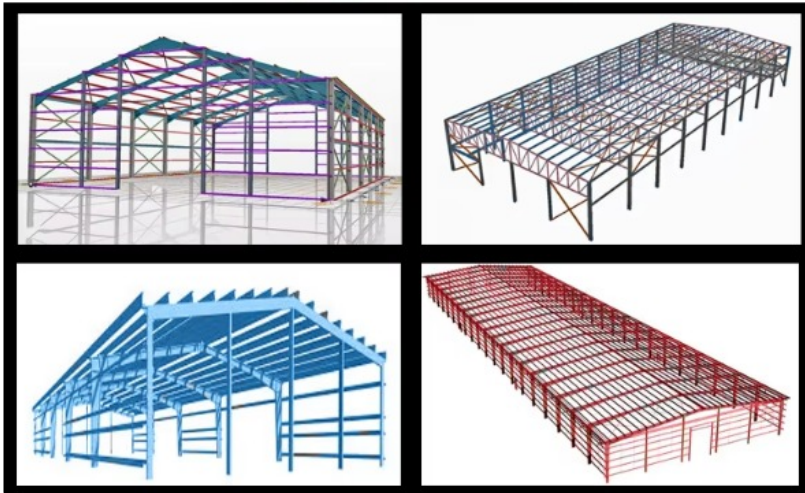
Main structure	Welded H steel, material grade: Q355B (equivalent to S355JR, ASTM A572 Gr. 50)
Anti-rust protection	Hot dip galvanized or anti-rust painting
Roof and wall	Single layer steel sheet or sandwich panel

Other components available upon request. Please provide information for detailed custom design.

Building Components

Main Framing	
Column	Q235,Q355B,S355JR,S275,SS304,SS316 H section steel, Spray painting and galvanizing
Beam	Q235,Q355B,S355JR,S275,SS304,SS316 H section steel, Spray painting and galvanizing
Secondary Framing	
Purlin	Q235B Z and C sections purlin
Knee brace	Q235B angle steel, galvanized
Tie bar	Q235B round steel, painted
Bracing	Q235B round steel, galvanized
Roof and Wall Panels	
Single steel sheet	0.5/0.6/0.7 color steel sheet
Sandwich panel	EPS/PU/Fiber glass wool/ rock wool sandwich panel
Steel Decking Floor	V-688 Decking floor
Structural subsystem	Canopies, Fascias, Partitions, etc.
Mezzanines, Platforms	H beam
Other Building Accessories	Sliding Doors, Roll Up Doors, Windows, Louvers, etc.

Technical Parameters



Please kindly inform us of the information below if you are interested in our products:

Project Progress: Is Land Purchased? Is it licensed by the government?

Usage: for warehouse, workshop, showroom, etc.

Location: In which country will it be built?

Local Climate: Wind speed, Snow load (max. Wind speed)

Design: Please provide the design drawing. Or do you need us to design for you?

Dimension: Length*width*height

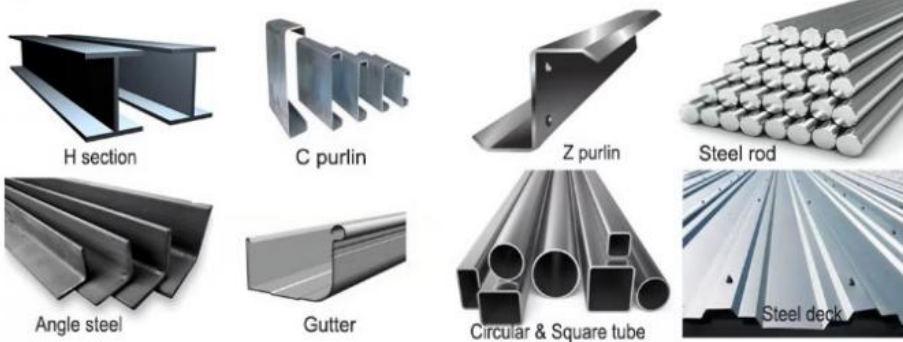
Crane Beam: Do you need crane beam inside the steel structure?

Roof and Wall: determine the panel material, such as color steel panel, and metal sandwich panel

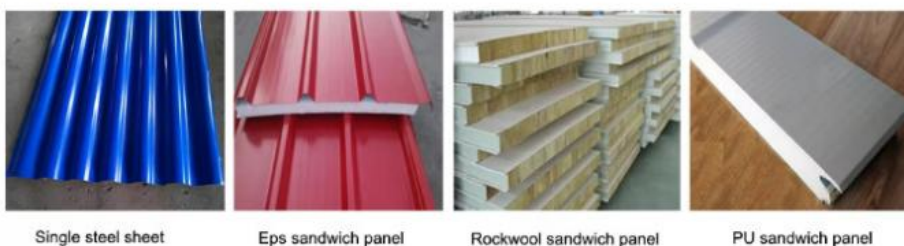
Windows and Doors: what material, quantity, and type?

Steel Structure Components

Main frame(column& beam)



Auxiliary system (wall& roof material)



Cost saving and transportation convenient designs

Main beam and column made from qualified steel

Resists heavy wind (140km/h) and 8 grade earthquakes

Easy assembly and disassembly without damage
Wide applications in various construction scenarios
Environmentally friendly and recyclable materials

Project Cases





Logistics & Distribution: High-bay storage systems with narrow aisle compatibility

Advanced Manufacturing: Vibration-dampened floors for precision equipment

Food & Pharmaceutical: Hygienic designs with smooth, cleanable surfaces

Energy Sector: Explosion-resistant designs for hazardous environments

Advantages of Steel Structure Buildings

High-Strength Steel Frame: Adopting international standard steel grades (ASTM A36, Q355B, S235JR, etc.), the main frame boasts exceptional load-bearing capacity, supporting spans of 10m to 50m (or customized) without intermediate columns, maximizing usable space for production or storage.

Weather & Disaster Resistance: Equipped with anti-seismic (up to seismic intensity 8), anti-wind (up to 250km/h), and anti-corrosion capabilities. The steel components undergo Sa2.5-level sandblasting and hot-dip galvanizing (or fluorocarbon spraying) treatment, ensuring resistance to salt spray, humidity, and chemical erosion - ideal for coastal, desert, or industrial areas.

Fire Safety Compliance: Optional fire-resistant coatings (up to 2-hour fire rating) and fireproof insulation materials meet local fire codes (e.g., NFPA, Eurocode), safeguarding personnel and assets.

Size & Layout Flexibility: Customize length, width, height (eave height 3m-15m), column spacing, and door/window positions to fit your site and operational requirements. Whether you need a small workshop (100) or a large-scale warehouse (10,000+), we deliver precise solutions.

Functional Adaptation: Tailor the building to your industry: Manufacturing Plants (reserved crane beams 1t-50t capacity), Logistics Warehouses (high ceiling heights, loading dock integration), Agricultural Facilities (ventilation systems, moisture-proof design), and Commercial Halls (aesthetically pleasing designs).

Strict Quality Inspection Standards



We implement whole-process quality management with strict supervision of every process from raw materials to installation. Our professional quality inspection team uses advanced equipment including German GS1000 vacuum spectrometer and high-frequency infrared carbon sulfur analyzer.

Certifications

RUSSIAN FEDERATION		02353
СИСТЕМА ДОБРОВОЛЬНОЙ СЕРТИФИКАЦИИ ПОЖАРНОЙ БЕЗОПАСНОСТИ <small>№ РОСС RU.32623.OC13ПБ в Едином реестре зарегистрированных систем добровольной сертификации</small>		
СЕРТИФИКАТ СООТВЕТСТВИЯ <u>№ РОСС RU.32623.OC13ПБ.10362</u>		
ЗАЯВИТЕЛЬ <small>(индивидуальное или юридическое лицо)</small>	Общество с ограниченной ответственностью "Перспектива" Адрес: Российская Федерация, 125167, г. Москва, вн. тер. г. муниципальный округ Хорошевский, Проспект Ленинградский, д. 47, стр. 2, помещение 28а ОГРН: 1247700676750, телефон: +74955181399, адрес электронной почты: perezpektiva2409@mail.ru	
ИЗГОТОВИТЕЛЬ <small>(индивидуальное или юридическое лицо)</small>	Baodu International Engineering Technology Co., Ltd. Адрес: Китай, Room 1101, Building 6, No. 9 Yard, Hongye Road, Daxing District, Beijing City Телефон: +86 010-61237405	
ОРГАН ПО СЕРТИФИКАЦИИ <small>(индивидуальное или юридическое лицо, осуществляющее сертификацию)</small>	№ РОСС RU.32623.OC13ПБ Общество с ограниченной ответственностью «Эксперт» 129090, г. Москва, вн.тер.г. муниципальный округ Мещанский, ул. Щепкина, дом 28, помещ 2/5	
ПОДТВЕРЖДАЕТ, ЧТО ПРОДУКЦИЯ <small>(индивидуальное или юридическое лицо, подтверждающее соответствие продукции)</small>	Конструкция ограждающая стеновая на основе стеновых панелей, трехслойных, с облицовкой из стальных профилированных листов толщиной 0,6-1,0 мм, с утеплителем из минеральной ваты с плотностью не менее 100 кг/м ³ , общая толщина панели 100-350 мм. Торговая марка: ВАОДУ. Серийный выпуск.	
СООТВЕТСТВУЕТ ТРЕБОВАНИЯМ <small>(технические стандарты, правила, условия договора, на соответствие которым (дальше) производится сертификация)</small>	ГОСТ 30244-94 «Материалы строительные. Методы испытаний на горючесть», раздел 6, метод 1. Материал относится к негорючим материалам (НГ). ГОСТ 32603-2021	
ПРОВЕДЕННЫЕ ИССЛЕДОВАНИЯ (ИСПЫТАНИЯ) И ИЗМЕРЕНИЯ	Протокол испытаний № ИЛ113-62792 от 23.05.2025 года, выданной Испытательной лабораторией Общества с ограниченной ответственностью «Эксперт», аттестат аккредитации РОСС RU.32623.ИЛ13ПБ	
ПРЕДСТАВЛЕННЫЕ ДОКУМЕНТЫ <small>(документы, подтверждающие соответствие продукции требованиям сертификации)</small>	Схема сертификации: 1с	
ДОПОЛНИТЕЛЬНАЯ ИНФОРМАЦИЯ	СРОК ДЕЙСТВИЯ СЕРТИФИКАТА СООТВЕТСТВИЯ с 23.05.2025 по 22.05.2028	
Руководитель органа		О.В. Ребрин <small>инициалы, фамилия</small>
Эксперт		Т.А. Сибирякова <small>инициалы, фамилия</small>
Сертификат не применяется при обязательной сертификации		



CERTIFICATE

ATTESTATION CERTIFICATE

The Company mentioned below has been audited by the Notified Body UDEM, according to relevant standard given below

Company Name : **Baodu International Advanced Construction Material Co., Ltd.**

Company Address : No.26, Baihe Road, Yongqing Industrial Zone, Hebei Province, China

Related Standards : **EN 14509:2013**

Product Name : **Insulated Metal Cladding**

Report No and Date : **BIACM210615001/15.06.2021**

Product Brand/Model/Type : **BD-100MM-IMC, BD-50MM-IMC, BD-75MM-IMC, BD-120MM-IMC, BD-150MM-IMC, BD-200MM-IMC**

Certificate Number : **M.2021.206.N8433**

Initial Assessment Date : **28.06.2021**

Registration Date : **29.06.2021**

Reissue Date/No : **-**

Expiry Date : **28.06.2026**


UDEM International Certification
Auditing Training Centre Industry
and Trade Inc.Co.



The currency of the certificate can be checked through www.udemtd.com.tr. The CE mark shown on the right can only be used under the responsibility of the manufacturer with the completion of EC Declaration of Conformity for all the relevant Directives. This certificate remains the property of UDEM International Certification Auditing Training Centre Industry and Trade Co. Ltd. to whom it must be returned upon request. The above named firm must keep a copy of this certificate for 15 years from the registration of certificate. The above named firm must notify all changes related with the approved type to UDEM. If UDEM will not renew expiry date of this certificate in question
Address: Mutlukent Mahallesi 2073 Sokak (Eski 93 Sokak) No:10 Çankaya - Ankara - TURKEY
Phone: +90 0312 443 03 90 Fax: +90 0312 443 03 76
E-mail: info@udemtd.com.tr www.udem.com.tr



Certificate No. 016724E3032782M



CERTIFICATE OF ENVIRONMENT MANAGEMENT SYSTEM CERTIFICATION

Date of Initial Issuance Apr. 11, 2018 / Date of Re-certification Issuance Apr. 10, 2024
Date of Expiration: Apr. 10, 2027

This is to Certify that the Environment Management System of

**BAODU INT'L ADV CONSTRUCTION
MATERIALS CO., LTD.**

is in conformity with
GB/T24001-2016 idt ISO14001:2015 Standard, applies to
PRODUCTION OF STEEL STRUCTURE (INCLUDING PRODUCTION OF COLOR
PROFILED STEEL PLATE AND CONSTRUCTION METAL SURFACE INSULATION
SANDWICH PANEL)

BCC Inc.

President: 



Unified social credit code 9111022101879950

REGISTERED ADDRESS NO.24, BAIDE AVE, INDUSTRIAL PARK, YONGQING COUNTY, LANGFANG, HEBEI PROVINCE, P.R.C.
OPERATION ADDRESS NO.24, BAIDE AVE, INDUSTRIAL PARK, YONGQING COUNTY, LANGFANG, HEBEI PROVINCE, P.R.C.



中国认可
国际互认
管理体系
MANAGEMENT SYSTEM
CNAS C016-M



BCC Address: Room 41-01-01, Floor 1, 10-4F Shangpanmen Inn, Dongcheng District, Beijing, CHINA. This certificate is valid within the scope of specified validation of competence and qualifications. The effectiveness of this certificate shall be maintained by regular surveillance audits. The validity of the certificate can be required through www.bcc.com.cn or by QR code. The information of this certificate available for inquiry on CQC's website: www.cqc.com.cn.



Certificate No. 016724E3030082M



CERTIFICATE OF OCCUPATIONAL HEALTH AND SAFETY MANAGEMENT SYSTEM CERTIFICATION

Date of Initial Issuance Apr. 11, 2018 / Date of Re-certification Issuance Apr. 10, 2024
Date of Expiration: Apr. 10, 2027

This is to Certify that the Occupational Health and Safety Management System of

**BAODU INT'L ADV CONSTRUCTION
MATERIALS CO., LTD.**

is in conformity with
GB/T 45001-2020 idt ISO 45001:2018 Standard, applies to
PRODUCTION OF STEEL STRUCTURE (INCLUDING PRODUCTION OF COLOR
PROFILED STEEL PLATE AND CONSTRUCTION METAL SURFACE INSULATION
SANDWICH PANEL)

BCC Inc.

President: 



Unified social credit code 9111022101879950

REGISTERED ADDRESS NO.24, BAIDE AVE, INDUSTRIAL PARK, YONGQING COUNTY, LANGFANG, HEBEI PROVINCE, P.R.C.
OPERATION ADDRESS NO.24, BAIDE AVE, INDUSTRIAL PARK, YONGQING COUNTY, LANGFANG, HEBEI PROVINCE, P.R.C.



中国认可
国际互认
管理体系
MANAGEMENT SYSTEM
CNAS C016-M



BCC Address: Room 41-01-01, Floor 1, 10-4F Shangpanmen Inn, Dongcheng District, Beijing, CHINA. This certificate is valid within the scope of specified validation of competence and qualifications. The effectiveness of this certificate shall be maintained by regular surveillance audits. The validity of the certificate can be required through www.bcc.com.cn or by QR code. The information of this certificate available for inquiry on CQC's website: www.cqc.com.cn.

CERTIFICATE

CERTIFICATE



Certificate No. 014724Q07182M



CERTIFICATE OF QUALITY MANAGEMENT SYSTEM CERTIFICATION

Date of Initial Issuance Apr. 11, 2018 / Date of Re-certification Issuance Apr. 10, 2024
Date of Expiration: Apr. 10, 2027

This is to Certify that the Quality Management System of

**BAODU INT'L ADV CONSTRUCTION
MATERIALS CO., LTD.**

is in conformity with
GB/T 19001-2016 idt ISO9001:2015 Standard, applies to
PRODUCTION OF STEEL STRUCTURE (INCLUDING PRODUCTION OF COLOR
PROFIED STEEL PLATE AND CONSTRUCTION METAL SURFACE INSULATION
SANDWICH PANEL)

BCC Inc.

President:



Unified social credit code 911101020379307

REGISTERED ADDRESS NO.24, BAHU AVE, INDUSTRIAL PARK, YONGQING COUNTY, LANGFANG, HEBEI PROVINCE, P.R.C.
OPERATION ADDRESS NO.24, BAHU AVE, INDUSTRIAL PARK, YONGQING COUNTY, LANGFANG, HEBEI PROVINCE, P.R.C.



中国认可
国际互认
管理体系
MANAGEMENT SYSTEM
CNAS C018-H



BCC Address: Room 41-01-01, Floor 1, 10-41 Changshengmen Street, Dongcheng District, Beijing, CHINA. This certificate is valid within the scope of the certification and qualification. The validity of the certificate can be verified through the BCC website or by QR code. The information of this certificate is available for inquiry on BCC's website: www.bccgroup.cn.

Company Profile







Baodu International Advanced Construction Material Co., Ltd was established in January 2010 with offices in Beijing and factory in Hebei, China. We specialize in industrial noise treatment, steel structures, sandwich panels and prefab houses.

Annual production capacity includes 6 million square meters of acoustic sandwich panels, 100,000 tons of steel structures and 1 million square meters of floor decking sheet. Our products serve over 30 countries worldwide.

Our professional design team includes 5 senior engineers, 20 engineers, and 35 technicians with over 10 years' experience. We hold multiple energy saving patents, construction qualifications, CE certification and Russian GOST certification.

Notable projects include the military parade village for China's 60th anniversary and Beijing Daxing International Airport. We've also undertaken international projects in Pakistan and Dubai under China's "One Belt, One Road" initiative.

Packing and Shipping





Packaging Details:

- Steel structure components with proper protection
- Sandwich panels covered with plastic film
- Bolts and accessories in wooden boxes
- Standard ocean transport packaging
- Professional loading with cranes and forklifts

Frequently Asked Questions

Q: Are you a manufacturer or a trading company?

A: We are a leading and well-known company in the industry. By choosing us, you will receive the most professional technical solutions and the most competitive prices. You are welcome to visit us anytime.

Q: How can I get a project quote?

A: You can contact us 24/7 via Alibaba, email, phone, or WhatsApp, and you will receive a prompt response at any time.

Q: Are your prices competitive compared to other companies?

A: Our business philosophy is to offer the best price for the same quality and the best quality for the same price. We will do our utmost to reduce your costs while ensuring you receive the best product for what you pay.

Q: Can you provide design services?

A: Yes, we can design complete solution drawings according to your requirements using AutoCAD, PKPM, MTS, 3D3S, Tarch, Tekla Structures (Xsteel), etc.

Q: How is your quality control, and what is the delivery time?

A: We provide real-time online monitoring of the production process. We have a professional QC team and advanced testing equipment, and we also support third-party inspections. Delivery time depends on order quantity. Typically, delivery to the nearest Chinese port takes 20-40 days after receiving the deposit.

Q: Do you accept container loading inspections?

A: You are welcome to send inspectors—not only for container loading but also at any time during production.

Q: Can you send engineers or a team to install my project?

A: We will provide detailed installation drawings and video instructions. If necessary, we can dispatch professional engineers for guidance and experienced technicians to assist with installation.

Q: What are the payment terms?

A: We accept T/T or L/C, with 30% deposit and 70% balance before shipment.



Baodu International Advanced Construction Material Co., Ltd.



+86 13717927965



chunlei.song@baodu.com



baodupanel.com

No. 2, Yijin North Street, Daxing District, Beijing