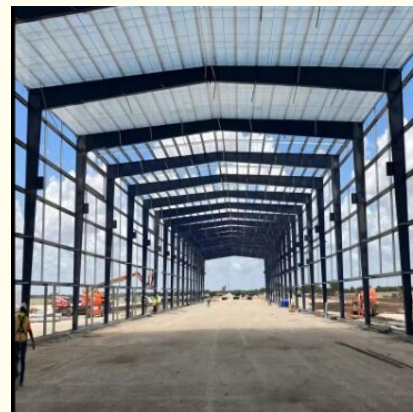


Prefab Steel Warehouse engineered for strength and longevity providing space utilization and easy expansion capabilities

Our Product Introduction

Basic Information

- Place of Origin: Hebei, China
- Brand Name: BAODU
- Certification: ISO9001, CE
- Model Number: Steel Warehouse
- Minimum Order Quantity: Discussible
- Price: Reasonable
- Packaging Details: In general, for steel structure, we use the steel frame packing to keep goods not to be broken. For sandwich panel and color steel sheet, we use the plastic packing. If the clients need special packing will according to their requirements.
- Delivery Time: 15-21 days
- Payment Terms: L/C, D/A, D/P, T/T, Western Union, MoneyGram
- Supply Ability: 10000 Square Meter/Square Meters per Month

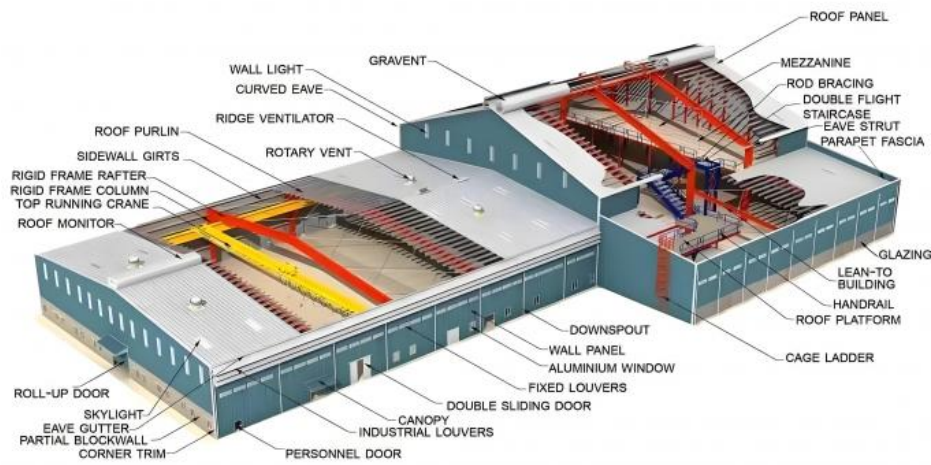


Product Specification

- Product Name: Prefab Steel Warehouse Engineered For Strength And Longevity Providing Space Utilization And Easy Expansion Capabilities
- Keyword: Steel Structure Building Warehouse
- Roof Cladding: Corrugated Steel Sheet/Sandwich Panel
- Transport And Load: Container Shipment
- Installation Guide: Installation Drawings And Video
- Certificate: CE/ ISO9001
- Surface Treatment: 1. Painting 2. Galvanized
- Size: Customers' Requirements
- Application: Steel Workshop
- Material: Q235, Q355
- Highlight: **prefab steel warehouse with warranty, engineered steel warehouse for expansion, durable prefab warehouse for space utilization**

Prefab Steel Warehouse

Engineered for strength and longevity, providing optimal space utilization and easy expansion capabilities.





What is a Prefabricated Steel Structure Building?

Steel structure buildings consist of three main components connected by bolts and screws:

- Primary members:** Columns and beams (H-section steel, square tube steel)
- Secondary members:** C or Z purlins, bracing systems
- Enclosure systems:** Roof and wall sheeting or sandwich panels (EPS, fiberglass wool, PU)
- Additional components:** Rolling doors, aluminum windows, and custom features

All primary and secondary members are designed and fully fabricated in our factory—including cutting, punching, drilling, welding, and forming—before shipping to your site. On-site assembly uses nut and bolt connections, significantly reducing construction time and costs.

We offer various structural and non-structural additions including ventilators, doors, windows, trusses, mezzanine floors, canopies, and crane systems, tailored to your specific requirements.

Technical Specifications

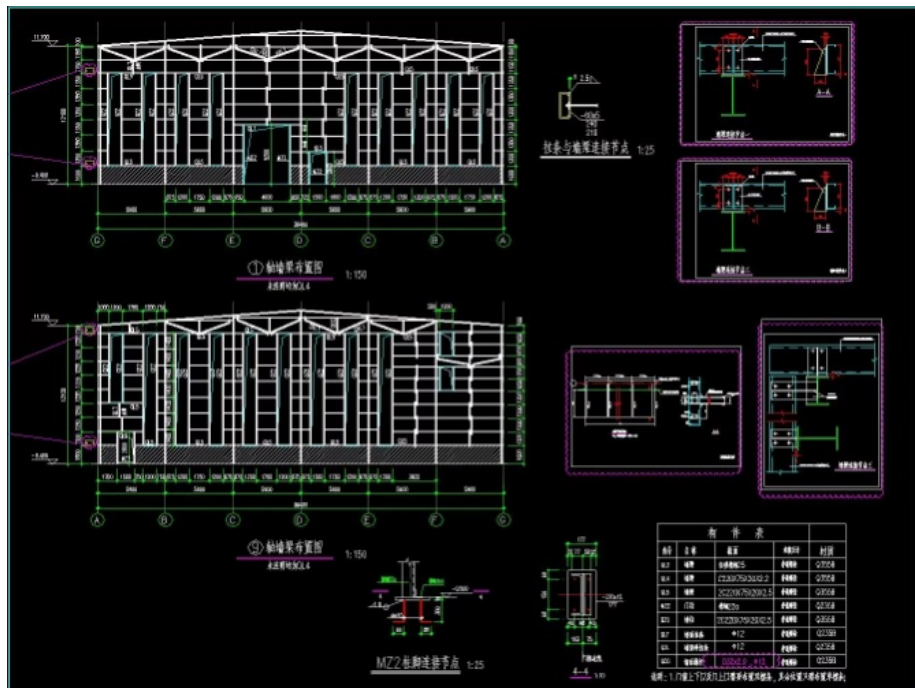
Component	Specifications
Main Structure	PEB Welded H-shaped steel or hot rolled steel, Q355 or Q235
Anti-rust Protection	Hot dip galvanized or anti-rust painting
Purlins and Girts	Cold rolled C or Z steel, Q355 or Q235
Roof and Wall	Single layer steel sheet or sandwich panel
Gutter	Heavy duty galvanized steel
Down Pipe	PVC
Door	Sliding door or roller shutter
Windows	PVC or aluminum alloy

Additional components available upon request. Please provide detailed requirements for custom design.

Why Choose Steel Structure Buildings?

- Cost Savings:** Up to 25% lower cost per square meter compared to conventional buildings, with reduced site erection costs
- Quality Control:** Factory-designed and fabricated with strict quality standards throughout the manufacturing process
- Quick Erection:** Pre-fabricated components with bolt connections enable fast, step-by-step installation
- Flexibility:** Customizable designs, easy future expansion, and low transportation costs
- Energy Efficiency:** Environmentally friendly solution with CO2 reduction, energy efficiency, and recyclable materials

Technical Parameters



Custom Design Information

If you have drawings, please share them with us for accurate quotation. Our design team will create optimal steel structure warehouse designs based on your requirements. For custom designs, please provide:

Location: Country and city where building will be constructed

Size: Length × width × eave height

Wind Load: Maximum wind speed (kn/m², km/h, or m/s)

Snow Load: Maximum snow height (kn/m², mm) and temperature range

Earthquake Resistance: Required seismic level

Brick Walls: Required height (1.2m, 1.5m, or other)

Thermal Insulation: EPS, fiberglass wool, rockwool, PU sandwich panels, or standard metal sheets

Doors: Quantity and dimensions (width × height in mm)

Windows: Quantity and dimensions (width × height in mm)

Crane Systems: Quantity, maximum lifting weight (tons), and lifting height (m)

BAODU®

Song Chunlei
Overseas Manager

BAODU INTERNATIONAL ENGINEERING TECHNOLOGY CO., LTD.
Add: Floor 11, Jiaoyue Square, Xihongmen, Daotian District,
Beijing, China 100162
Tel: +86-10-60256462 Fax: +86-10-61225599
Mobile: +86-13717927965
Email: chunlei.song@baodu.com
Website: www.baodu.com

Business Scope:

Prefab House

Container House

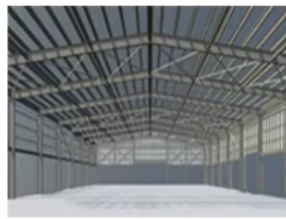
Sandwich Panel

Steel Structure

Applications



Steel structure warehouse



Steel structure factory building



Steel structure building



Steel structure garage/hangar



Steel structure house



Steel structure livestock house

Steel structure buildings are versatile and suitable for various industrial and commercial uses:

Manufacturing Facilities: Automotive plants, machinery workshops, food processing plants

Warehouses & Logistics Centers: Distribution hubs, cold storage, bulk storage facilities

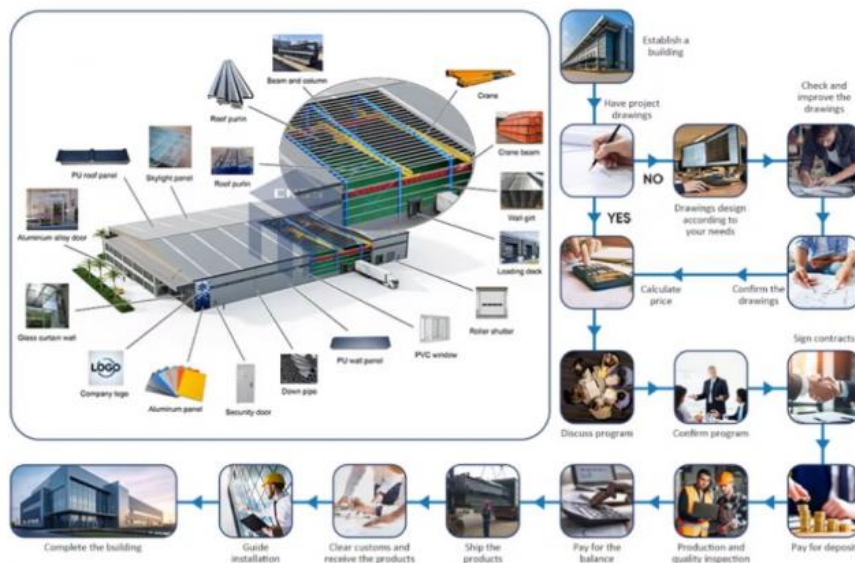
Aircraft Hangars: Requiring very large, clear-span areas

Power Stations & Substations

Agricultural Buildings: Large barns, storage silos, and processing facilities

Retail Outlets & Superstores (Big-Box Stores)

The Construction Process



Design & Engineering: Detailed architectural and structural drawings with load calculations

Fabrication: Cutting, welding, and drilling steel components in controlled factory environment

Site Preparation & Foundation: Excavation and concrete foundation pouring with embedded anchor bolts

Erection: Assembling primary steel frame (columns, beams) followed by secondary elements

Enclosure: Installing roof and wall cladding systems with insulation

Finishing: Installing doors, windows, ventilation systems, skylights, and interior finishes

Packing and Shipping





Component	Packaging Method
-----------	------------------

Steel Components	Packaged with iron pallets and coding numbers for easy identification
Fasteners	Packed in steel boxes
Roof & Wall Panels	Protected with plastic film and labeled
Container Types	40ft HC, 40ft OT, 20ft GP
Transportation	Sea, air, and inland transportation options

Company Profile





Baodu International Advanced Construction Material Co., Ltd was established in January 2010 with offices in Beijing and factory in Hebei, China. We are designers, manufacturers, suppliers, and exporters of industrial noise treatment solutions, steel structures, sandwich panels, and prefab houses.

Our annual production capacity includes 6 million square meters of acoustic sandwich panels, 100,000 tons of steel structures, and 1 million square meters of floor decking sheet. Our products are sold in more than 30 countries worldwide.

We maintain a professional design team with over 10 years of experience, including 5 senior engineers, 20 engineers, and 35 technicians. Baodu holds multiple energy-saving and environmental protection intellectual property rights, construction qualifications, CE certification, and Russian GOST certification.

Notable projects include the military parade village for China's 60th anniversary, Beijing Daxing International Airport, and overseas projects such as Thar Pakistan coal-fired power plant and Hasyan Dubai power plant.

After-Sales Service

One-stop service: Sales, design, refinement, procurement, production, packaging, delivery, construction, and after-sales support

24-hour consultation service

Technical support including modeling and drawing design

Professional construction technicians available for on-site guidance

Related products procurement services

Complete steel processing equipment

Certified welding workers with 5-8 years of experience

Specialized quality inspection department with full process quality control

Frequently Asked Questions

1) Is your company a factory or trade company?

We are a factory, ensuring you receive the best competitive pricing.

2) What can you buy from us?

Steel structures, building materials, steel structure building systems, poultry farm systems, and customized steel solutions with 24-hour one-stop service.

3) Do you offer guiding installation on site overseas for warehouse building?

Yes, we provide installation, supervision, and training services. Our professional technical engineers have successfully supervised installations in over 50 countries worldwide.

4) What is your main market?

Our products are exported to 130 countries and regions worldwide, maintaining sustained and stable cooperation across all continents.

5) How to pack the products?

We use standard packaging. Special packaging requirements can be accommodated with additional fees.



Baodu International Advanced Construction Material Co., Ltd.



+86 13717927965



chunlei.song@baodu.com



baodupanel.com

No. 2, Yijin North Street, Daxing District, Beijing