



1000 Square Meter Metal Building Kits Modular Prefabricated Office Building Commercial Workshop Manufacturing CE Free Solution Modern Design Prefab Steel Structure Warehouse

Our Product Introduction

Basic Information

- Place of Origin: Hebei, China
- Brand Name: BAODU
- Certification: ISO9001, CE
- Model Number: Steel Warehouse
- Minimum Order Quantity: 1000square meters
- Price: \$45-65square meter
- Packaging Details: In general, for steel structure , we use the steel frame packing to keep goods not to be broken . For sandwich panel and color steel sheet, we use the plastic packing . If the clients need special packing will according to their requirements.
- Delivery Time: 30days
- Payment Terms: L/C, D/A, D/P, T/T, Western Union, MoneyGram
- Supply Ability: 100000 Square Meter/Square Meters per Month



Product Specification

- Product Name: 1000 Square Meter Workshop Modern Design Prefab Steel Structure Warehouse
- Processing Service: Bending, Welding, Decoiling, Cutting, Punching
- Design: SAP2000/AutoCAD /PKPM /3D3S/TEKLA
- Project Solution Capability: 3D Model Design
- Size: According To Customer Requirement
- Material: Q235B/Q345B Low Carbon Steel
- Color: Customized Color
- Packing: Standard Packing
- Roof And Wall: Corrugated/EPS/PU/Rock Wool/glass Wool
- Transportability: Easily Transported By Truck Or Ship
- Window: Aluminum Alloy Sliding Window
- Secondary Frame: C&Z Purlin, Brace
- Highlight: **1000 square meter prefab steel warehouse, modular metal building kits,**

1000 Square Meter Metal Building Kits Modular Prefabricated Office Building Commercial Workshop Manufacturing CE Free Solution Modern Design Prefab Steel Structure Warehouse

One-stop solution

Structural design safety certificates, design solutions

Reduce costs, reasonable budget team, shorten the duration

Whole process of project management Description from receipt of orders to design, production, quality control, packaging, delivery, installation guidance to ensure that the project is completed on time and in quality

Solutions (pain points and programs)

Design standards are not compatible with local, our advantage: team engineers and other familiar with local specifications and design
Worry about the lack of installation guidance, our advantage: provide installation drawings, etc.

Product Application Details

steel grade, design load, seismic grade, wind grade, fire rating requirements, etc.

Main Steel Q355B / Q235B High Strength Structural Steel → Advantages: Ensure structural safety and stability in accordance with international standards.

Surface treatment: hot dip galvanizing / antirust paint (specify thickness and standard) → Advantage: excellent anti-corrosion properties and rust prevention: excellent anti-corrosion properties, prolonging the service life of the building and reducing maintenance costs.

Steel Structure Building/Warehouse/Poultry		
1. Main Framing		Welded/ Hot rolling H section column and beam
Column		Q235, Q355B, S355JR, S275, SS304, SS316 H section steel, Spray painting and galvanizing
Beam		Q235, Q355B, S355JR, S275, SS304, SS316 H section steel, Spray painting and galvanizing
2. Secondary Framing		
	Purlin	Q235B Z and C sections purlin
	Knee brace	Q235B angle steel, galvanized
	Tie bar	Q235B round steel, painted
	Bracing	Q235B round steel, galvanized
3. Roof and Wall panels		Steel sheet and insulated sandwich panels
	Single steel sheet	0.5/0.6/0.7 color steel sheet
	Sandwich panel	EPS/PU/Fiber glass wool/ rock wool sandwich panel
4. Steel Decking Floor		V-688 Decking floor
5. Structural subsystem		Canopies, Fascias, Partitions, etc.
6. Mezzanines, Platforms		H beam
7. Other Building Accessories		Sliding Doors, Roll Up Doors, Windows, Louvers, etc.

Technical Parameters

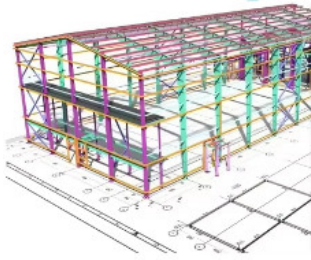


AUTODESK
3DS MAX

SAP 2000



AUTODESK
AUTOCAD



Steel Structural Design

We have an experienced design department, who have abundant practical experience to complete the structural design of various buildings perfectly as per Chinese design codes and local rules. The structure is reasonable and the steel consumption is cost-effective.

For overseas projects, the design work can be took by our partners, all of them are registered structural designers, and the design can be carried out as per BS-standards, US-standards, as well as the design codes of other countries.

Detailing, 3D modeling, fabrication and installation shop drawings can be free with conditions.

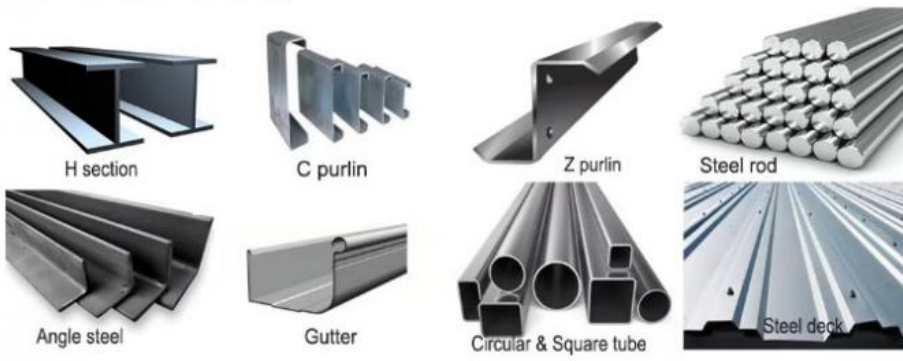


Please kindly inform us of the information below if you are interested in our products.

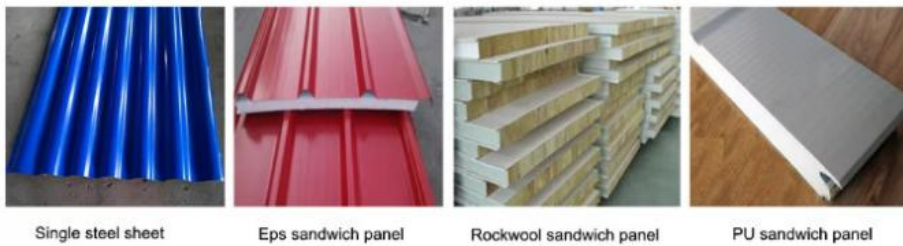
1. **Project Progress:** Is Land Purchased? Is it licensed by the government?
2. **Usage:** for warehouse, workshop, showroom, etc.
3. **Location:** In which country will it be built?
4. **Local Climate:** Wind speed, Snow load (max. Wind speed)
5. **Design:** Please provide the design drawing. Or do you need us to design for you?
6. **Dimension:** Length*width*height
7. **Crane Beam:** Do you need crane beam inside the steel structure?
8. **Roof and Wall:** determine the panel material, such as color steel panel, and metal sandwich panel.
9. **Windows and Doors:** what material, quantity, and type?

Components

Main frame(column& beam)



Auxiliary system (wall& roof material)



Cost saving and transportation convenient designs

Main beam and column made from qualified steel

Resists heavy wind (140km/h) and 8 grade earthquakes

Easy assembly and disassembly without damage

Wide applications in various construction scenarios

Environmentally friendly and recyclable materials

Connection Method

Columns connected with foundation by pre-embedded anchor bolts

Beams and columns connected with high intensity bolts

Project Cases



Industry-Specific Solutions

Logistics & Distribution: High-bay storage systems with narrow aisle compatibility

Advanced Manufacturing: Vibration-dampened floors for precision equipment

Food & Pharmaceutical: Hygienic designs with smooth, cleanable surfaces

Energy Sector: Explosion-resistant designs for hazardous environments

Advantages of Steel Structure Buildings

- **High-Strength Steel Frame:** Adopting international standard steel grades (ASTM A36, Q355B, S235JR, etc.), the main frame boasts exceptional load-bearing capacity, supporting spans of 10m to 50m (or customized) without intermediate columns, maximizing usable space for production or storage.
- **Weather & Disaster Resistance:** Equipped with anti-seismic (up to seismic intensity 8), anti-wind (up to 250km/h), and anti-corrosion capabilities. The steel components undergo Sa2.5-level sandblasting and hot-dip galvanizing (or fluorocarbon spraying) treatment, ensuring resistance to salt spray, humidity, and chemical erosion – ideal for coastal, desert, or industrial areas.
- **Fire Safety Compliance:** Optional fire-resistant coatings (up to 2-hour fire rating) and fireproof insulation materials meet local fire codes (e.g., NFPA, Eurocode), safeguarding personnel and assets.
- **Size & Layout Flexibility:** Customize length, width, height (eave height 3m-15m), column spacing, and door/window positions to fit your site and operational requirements. Whether you need a small workshop (100) or a large-scale warehouse (10,000+), we deliver precise solutions.
- **Functional Adaptation:** Tailor the building to your industry:
 - **Manufacturing Plants:** Reserved crane beams (1t-50t capacity), equipment foundation interfaces, and ventilation systems for high-temperature or dust-prone production.
 - **Logistics Warehouses:** High ceiling heights, loading dock integration, shelf-load optimization, and natural lighting strips to reduce energy consumption.
 - **Agricultural Facilities:** Ventilation systems, moisture-proof design, and large-span layouts for crop storage, livestock housing, or agricultural machinery shelters.
 - **Commercial Halls:** Aesthetically pleasing designs with customizable exterior cladding (color steel sheets, aluminum panels) for exhibition centers, retail spaces, or office annexes.
- **Climate Adaptation:** Insulated sandwich panels (PU, EPS, rock wool) for thermal insulation in cold regions; sunshade systems and enhanced ventilation for high-temperature areas; and optimized roof slopes for rain/snow drainage in wet or snowy regions.
- **Lower Total Cost:** Competitive initial pricing (quoted by square meter or ton) with transparent cost breakdowns (including steel components, connectors, cladding, and accessories). Reduced transportation costs due to modular design – components are prefabricated in our factory, packaged efficiently for container shipping, and assembled on-site with minimal waste.
- **Rapid Installation:** 30%-50% faster construction than concrete buildings. Standardized components and detailed installation drawings enable quick assembly (a 1,000 building can be installed in 7-15 days with a professional team), shortening your project timeline and accelerating 投产 (production launch).
- **Low Maintenance:** Durable steel components and high-quality coatings reduce maintenance needs. The structure's long service life (20-50 years) and replaceable parts (e.g., seals, cladding) minimize long-term operational costs.
- **Certifications:** ISO 9001 (quality management system), CE (mandatory for European markets), AISC (American Institute of Steel Construction), JIS (Japanese Industrial Standards), and GB (Chinese National Standards) – customizable to your target market's requirements.
- **Compliance with Local Codes:** Our engineering team designs buildings to meet local building codes (e.g., IBC for the US, Eurocode for Europe, AS/NZS for Australia), fire safety regulations, and environmental standards. We provide complete technical documentation (local language versions available) including material test reports, welding certificates, and structural calculation sheets for smooth approval and inspection.

Strict Quality Inspection Standards



We implement whole-process quality management with strict supervision of every process from raw materials to installation. Our professional quality inspection team uses advanced equipment including German GS1000 vacuum spectrometer and high-frequency infrared carbon sulfur analyzer.

Certifications



Company Profile



Baodu International Advanced Construction Material Co., Ltd was established in January 2010 with offices in Beijing and factory in Hebei, China. We specialize in industrial noise treatment, steel structures, sandwich panels and prefab houses.

Annual production capacity includes 6 million square meters of acoustic sandwich panels, 100,000 tons of steel structures and 1 million square meters of floor decking sheet. Our products serve over 30 countries worldwide.

Our professional design team includes 5 senior engineers, 20 engineers, and 35 technicians with over 10 years' experience. We hold multiple energy saving patents, construction qualifications, CE certification and Russian GOST certification.

Notable projects include the military parade village for China's 60th anniversary and Beijing Daxing International Airport. We've also undertaken international projects in Pakistan and Dubai under China's "One Belt, One Road" initiative.

Packing and Shipping



Packaging Details:

- Steel structure components with proper protection
- Sandwich panels covered with plastic film
- Bolts and accessories in wooden boxes
- Standard ocean transport packaging
- Professional loading with cranes and forklifts

Frequently Asked Questions

1. How is your quality control?

Our products have obtained certifications from ISO9001, CE.

2. Can you provide design services?

Yes, we have an engineering team that can design for you according to your requirements. We will prepare construction drawings, structural drawings, processing details, and installation drawings and allow you to confirm them at different times of the project.

3. Do you provide samples?

Are samples charged or free? Yes, we can provide samples. But you need to pay for the freight.

4. What is the delivery time?

The delivery time depends on the size and quantity of the building. Generally, it will be delivered within 15-30 days after.

receiving the payment. Large orders allow for partial shipments.

5. Do you offer installation services?

We will provide you with detailed construction drawings and installation manuals to assist you in the step-by-step installation.

and construction of the building. If necessary, we can also send engineers to your location to help you.

6. How can I get your quotation?

You can contact us either online or via email. If you have the drawings, we can quote based on your drawings. Otherwise, please let us know the length, width, eave height of the building and the local weather conditions so that we can provide you with an accurate quotation and drawings.

7. How is your payment method?

A 30% deposit is required before production, and the remaining 70% will be paid based on the copy of the bill of lading or a letter of credit.



Baodu International Advanced Construction Material Co., Ltd.



+86 13717927965



chunlei.song@baodu.com



baodupanel.com

No. 2, Yijin North Street, Daxing District, Beijing