

Steel Structure Warehouse Prefabricated Industrial Workshop Durable Steel Frame Quick Installation Weather-Resistant Corrosion-Resistant Agricultural Storage Logistics Centers Manufacturing Plants

Our Product Introduction

Basic Information

- Place of Origin: Hebei, China
- Brand Name: BAODU
- Certification: ISO9001, CE
- Model Number: Steel Warehouse
- Minimum Order Quantity: 800 square meters
- Price: \$30-50 square meter
- Packaging Details: In general, for steel structure, we use the steel frame packing to keep goods not to be broken. For sandwich panel and color steel sheet, we use the plastic packing. If the clients need special packing will according to their requirements.
- Delivery Time: 30 days
- Payment Terms: L/C, D/A, D/P, T/T, Western Union, MoneyGram
- Supply Ability: 100000 Square Meter/Square Meters per Month



Product Specification

- Product Name: Steel Structure Warehouse Prefabricated Industrial Workshop Durable Steel Frame Quick Installation Weather-Resistant Corrosion-Resistant Agricultural Storage Logistics Centers Manufacturing Plants
- Processing Service: Bending, Welding, Decoiling, Cutting, Punching
- Bracing: Round Bar/Angle Steel/Steel Rod
- Design: SAP2000/AutoCAD /PKPM /3D3S/TEKLA
- Using Life: More Than 50 Years
- Plumbing System: Pre-installed
- Fire Resistance: High
- Durability: Corrosion-resistant With Protective Coating
- Tolerance: $\pm 1\%$
- Roof Cladding: Corrugated Steel Sheet/Sandwich Panel
- Purlin: C.Z Shape Steel Channel
- Wall Material: Steel Panels Or Sandwich Panels

Product Description

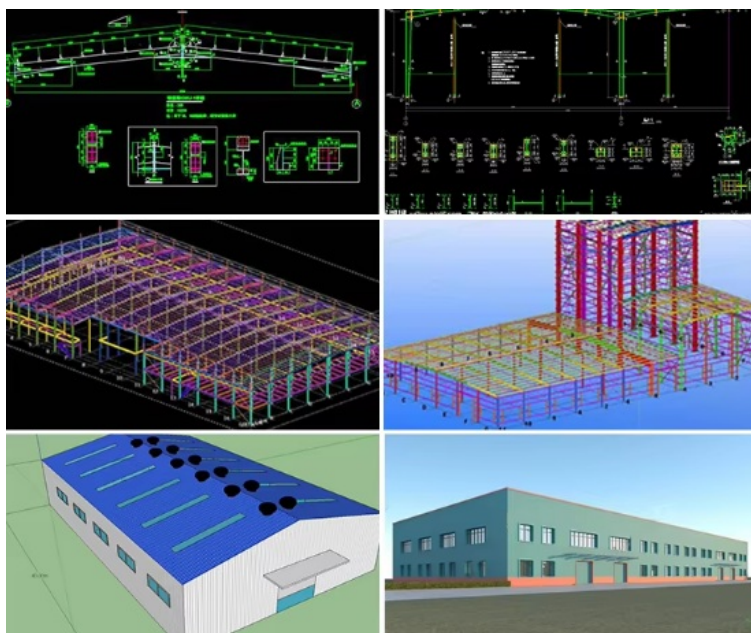
Steel Structure Warehouse & Industrial Workshop

Our prefabricated steel structure buildings feature durable steel frames with quick installation capabilities. Designed for weather resistance and corrosion protection, these structures are ideal for agricultural storage, logistics centers, and manufacturing plants.

Product Specifications

Component	Specifications
Main Framing	Welded/Hot rolling H section column and beam
Column	Q235, Q355B, S355JR, S275, SS304, SS316 H section steel, Spray painting and galvanizing
Beam	Q235, Q355B, S355JR, S275, SS304, SS316 H section steel, Spray painting and galvanizing
Secondary Framing	
Purlin	Q235B Z and C sections purlin
Knee brace	Q235B angle steel, galvanized
Tie bar	Q235B round steel, painted
Bracing	Q235B round steel, galvanized
Roof and Wall Panels	Steel sheet and insulated sandwich panels
Single steel sheet	0.5/0.6/0.7 color steel sheet
Sandwich panel	EPS/PU/Fiber glass wool/rock wool sandwich panel
Steel Decking Floor	V-688 Decking floor
Structural Subsystem	Canopies, Fascias, Partitions, etc.
Mezzanines, Platforms	H beam
Other Building Accessories	Sliding Doors, Roll Up Doors, Windows, Louvers, etc.

Technical Parameters



Basic Design Requirements

Project site location

Overall dimension (length*width*eave height in meters)

Mezzanine requirements and load capacity per square meter

Single-layer steel sheet wall or sandwich panel wall

Snow load if applicable

Wind speed/load

Interior column requirements

Overhead crane requirements and capacity

Any other particular requirements

Components



C Type Steel



Z Type Steel



H Type Steel



C Type Purlin



Z Type Purlin



Un-powered Ventilator



Rainwater Pipe



EPS Sandwich Panel



Roof and Wall Panels



Square Tube



Tube



Steel Decking Floor



Steel Gutter



High Strength Bolt



Self-tapping Screw



Sliding Window

Project Cases







Advantages of Steel Structure Buildings

- Small section components with light weight, easy to transport and install, suitable for large span, high height, and heavy bearing structures
- Excellent performance in withstanding impact and dynamic loads with superior seismic resistance
- Uniform internal steel structure ensuring high reliability
- Factory mechanized production for high precision components and efficient assembly
- Rapid on-site assembly and short construction periods

Our prefabricated steel structure buildings are pre-cut, pre-drilled, and ready for quick and efficient assembly. Suitable for agricultural buildings, barns, aircraft hangars, welding shops, commercial centers, garages, storage facilities, suburban buildings, warehouses, workshops, schools, wedding halls, dormitories, and more.

Strict Quality Inspection Standards



Excellent product quality is our eternal pursuit and the foundation of our global market presence. BAODU GROUP implements whole-process quality management, strictly supervising every stage from raw material supply to installation and construction.

We maintain a professional quality inspection team with advanced equipment including German GS1000 vacuum spectrometer and high-frequency infrared carbon sulfur analyzer. Our quality management has earned multiple awards and we support testing and certification by SGS, TUV, and BV.

Certification



СИСТЕМА ДОБРОВОЛЬНОЙ СЕРТИФИКАЦИИ
ПОЖАРНОЙ БЕЗОПАСНОСТИ

№ РОСС RU.32623.OC13ПБ.10362



СЕРТИФИКАТ СООТВЕТСТВИЯ

№ РОСС RU.32623.OC13ПБ.10362

(далее сертификат соответствия)

ЗАЯВИТЕЛЬ

(индивидуальное и юридическое лицо)

Общество с ограниченной ответственностью "Перспектива"
Адрес: Российская Федерация, 125167, г. Москва, вн. тер. г. муниципальный округ
Хорошевский, Пролетарский, д. 47, стр. 2, помещение 28а
ОГРН: 1247700670750, телефон: +74955181399, адрес электронной почты:
perspektiva2409@mail.ru

ИЗГОТОВИТЕЛЬ

(индивидуальное и юридическое лицо)

Baodu International Engineering Technology Co., Ltd.
Адрес: Китай, Room 1101, Building 6, No. 9 Yard, Hongye Road, Daxing District, Beijing City
Телефон: +86 010-61237405

ОРГАН ПО
СЕРТИФИКАЦИИ

(индивидуальное и юридическое лицо, аккредитованное в соответствии с требованиями стандарта)

№ РОСС RU.32623.OC13ПБ Общество с ограниченной ответственностью «Эксперт»,
129090, г. Москва, вн.тер.г. муниципальный округ Мещанский, ул.
Щепкина, дом 28, помещ 2/5

Код ОКПД 2

25.11.23.119

Код ТН ВЭД

7308905100

ПОДТВЕРЖДАЕТ,
ЧТО ПРОДУКЦИЯ(информация об объекте
сертификации, подлежащем
сертификации, объекте)

Конструкция ограждающая стеновая на основе стеновых панелей, трехслойных, с облицовкой
из стальных профилированных листов толщиной 0,6-1,0 мм, с утеплителем из минеральной
ваты с плотностью не менее 100 кг/м³, общая толщина панели 100-350 мм. Торговая марка:
BAODU.
Серийный выпуск.

СООТВЕТСТВУЕТ
ТРЕБОВАНИЯМ(стандарта, закона,
технического регламента,
технического задания,
технического задания,
технического задания)

ГОСТ 30244-94 «Материалы строительные. Методы испытаний на горючесть», раздел 6,
метод 1. Материал относится к негорючим материалам (НГ). ГОСТ 32603-2021

ПРОВЕДЕННЫЕ ИССЛЕДОВАНИЯ
(ИСПЫТАНИЯ И ИЗМЕРЕНИЯ)

Протокол испытаний № ИЛ13-62792 от 23.05.2025
года, выданной Испытательной лабораторией
Общества с ограниченной ответственностью
«Эксперт», аттестат аккредитации
РОСС RU.32623.ИЛ13ПБ

Примечание:
подлинность
сертификата
соответствия

ПРЕДСТАВЛЕННЫЕ ДОКУМЕНТЫ

(документы, подтверждающие соответствие
продукции требованиям нормативных документов)ДОПОЛНИТЕЛЬНАЯ
ИНФОРМАЦИЯ

Схема сертификации: 1с

СРОК ДЕЙСТВИЯ СЕРТИФИКАТА СООТВЕТСТВИЯ

с 23.05.2025 по 22.05.2028

Руководитель органа



О.В. Ребрин

инициалы, фамилия

Эксперт

Т.А. Сибирякова

инициалы, фамилия

Сертификат не применяется при обязательной сертификации



CERTIFICATE

ATTESTATION CERTIFICATE

The Company mentioned below has been audited by the Notified Body UDEM, according to relevant standard given below

Company Name : **Baodu International Advanced Construction Material Co., Ltd.**

Company Address : No.26, Baihe Road, Yongqing Industrial Zone, Hebei Province, China

Related Standards : **EN 14509:2013**

Product Name : **Insulated Metal Cladding**

Report No and Date : **BIACM210615001/15.06.2021**

Product Brand/Model/Type : **BD-100MM-IMC, BD-50MM-IMC, BD-75MM-IMC, BD-120MM-IMC, BD-150MM-IMC, BD-200MM-IMC**

Certificate Number : **M.2021.206.N8433**

Initial Assessment Date : **28.06.2021**

Registration Date : **29.06.2021**

Reissue Date/No : **-**

Expiry Date : **28.06.2026**

The currency of the certificate can be checked through www.udemtd.com.tr. The CE mark shown on the right can only be used under the responsibility of the manufacturer with the completion of EC Declaration of Conformity for all the relevant Directives. This certificate remains the property of UDEM International Certification Auditing Training Centre Industry and Trade Co. Ltd. to whom it must be returned upon request. The above named firm must keep a copy of this certificate for 15 years from the registration of certificate. The above named firm must notify all changes related with the approved type to UDEM. If UDEM will not renew expiry date of this certificate in question

Address: Mutlukent Mahallesi 2073 Sokak (Eski 93 Sokak) No:10 Çankaya - Ankara - TURKEY

Phone: +90 0312 443 03 90 Fax: +90 0312 443 03 76

E-mail: info@udemtd.com.tr www.udem.com.tr

UDEM International Certification
Auditing Training Centre Industry
and Trade Inc. Co.



Company Profile







<p>BAODU®</p> <p>Song Chunlei Overseas Manager</p> <p>BAODU INT'L</p> <p>Baodu International Engineering Technology Co., Ltd Add : Floor 11, Jiayue Square, Xihongmen, Daxing District, Beijing, China 100162 Tel : +86-10-60256462 Fax : +86-10-61225599 Mobile : +86-13717927965 Email : chunlei.song@baodu.com Website: www.baodu.com</p>	<p>Business Scope:</p> <table border="0"> <tr> <td>Prefab House</td> <td>Sandwich Panel</td> </tr> <tr> <td>Container House</td> <td>Steel Structure</td> </tr> </table> <p>     </p>	Prefab House	Sandwich Panel	Container House	Steel Structure
Prefab House	Sandwich Panel				
Container House	Steel Structure				

Baodu International Advanced Construction Material Co., Ltd was established in January 2010 with offices in Beijing and factory in Hebei, China. We are designers, manufacturers, suppliers, and exporters of industrial noise treatment solutions, steel structures, sandwich panels, and prefab houses.

Annual production capacity includes 6 million square meters of acoustic sandwich panels, 100,000 tons of steel structures, and 1 million square meters of floor decking sheet. Our products are sold in over 30 countries worldwide.

Our professional design team includes 5 senior engineers, 20 engineers, and 35 technicians with over 10 years of experience. We hold multiple energy saving and environmental protection intellectual property rights, construction and environmental protection design qualifications, CE certification, and Russian GOST certification.

Notable projects include the military parade village for China's 60th anniversary and Beijing Daxing International Airport. Under China's "One Belt, One Road" strategy, we have undertaken international projects including Thar Pakistan coal-fired power plant and Hasyan Dubai power plant.

Packing and Shipping



Steel structure components packaged with proper protection

Sandwich panels covered with plastic film

Bolts and accessories loaded into wooden boxes

All components, panels, bolts, and accessories are packed with standard packaging suitable for ocean transport and loaded into 40'HQ containers. Our skilled workers ensure careful handling using cranes and forklifts to prevent damage. We maintain strong relationships with vessel companies to ensure smooth transportation.

Frequently Asked Questions

Who are we?

Based in Hebei, China since 2020, we serve customers in Africa (25%), North America (20%), Oceania (15%), South America (13%), Central America (10%), Mid East (8%), and Southeast Asia (5%). Our office employs 50-100 professionals.

How can we guarantee quality?

Pre-production samples before mass production; Final inspection before shipment

What can you buy from us?

Steel Structures, Steel Structure Construction, Prefabricated Buildings, Poultry Farm Houses, Livestock Breeding Houses

Why should you buy from us instead of other suppliers?

20 years of experience in steel structure products

What services can we provide?

Delivery Terms: FOB, CFR, CIF, EXW, FAS, CIP, FCA, CPT, DEQ, DDP, DDU, Express Delivery, DAF, DES

Payment Currency: USD, EUR, JPY, CAD, AUD, HKD, GBP, CNY, CHF

Payment Methods: T/T, L/C, D/P D/A, MoneyGram, Credit Card, PayPal, Western Union, Cash, Escrow

Languages: English, Chinese, Spanish, Japanese, Portuguese, German, Arabic, French, Russian, Korean, Hindi, Italian



Baodu International Advanced Construction Material Co., Ltd.



+86 13717927965



chunlei.song@baodu.com



baodupanel.com

No. 2, Yijin North Street, Daxing District, Beijing