

High-Strength Steel Frame Building Export Quality Prefabricated Industrial Workshop & Steel Warehouse Industrial Production Agricultural Storage and Commercial Use ISO/CE Approved Quick Installation

Our Product Introduction

Basic Information

- Place of Origin: Hebei, China
- Brand Name: BAODU
- Certification: ISO9001, CE
- Model Number: Steel Warehouse
- Minimum Order Quantity: 300 square meters
- Price: \$46-68 square meter
- Packaging Details: In general, for steel structure, we use the steel frame packing to keep goods not to be broken. For sandwich panel and color steel sheet, we use the plastic packing. If the clients need special packing will according to their requirements.
- Delivery Time: 30 days
- Payment Terms: L/C, D/A, D/P, T/T, Western Union, MoneyGram
- Supply Ability: 100000 Square Meter/Square Meters per Month



Product Specification

- Product Name: High-Strength Steel Frame Building Export Quality Prefabricated Industrial Workshop & Steel Warehouse
- Environmental Impact: Eco-friendly
- Foundation: Bolt-Connected Precast Concrete Base
- Surface Treatment: 1. Painting 2. Galvanized
- Port: Tianjin Xingang
- Keyword: Steel Warehouse Building
- Grade: Q235, Q355, Q345
- Processing Service: Bending, Welding, Decoiling, Cutting, Punching
- Transport And Load: Container Shipment
- Installation Guide: Installation Drawings And Video
- Highlight: **prefab steel warehouse with ISO/CE approval, high-strength steel frame building, quick installation industrial steel workshop**

Product Description

High-Strength Steel Frame Building

Export quality prefabricated industrial workshop and steel warehouse designed for industrial production, agricultural storage, and commercial use. ISO/CE approved with quick installation capabilities.

Specifications

Steel Structure Building/Warehouse/Poultry	
1. Main Framing	Welded/Hot rolling H section column and beam
Column	Q235,Q355B,S355JR,S275,SS304,SS316 H section steel, Spray painting and galvanizing
Beam	Q235,Q355B,S355JR,S275,SS304,SS316 H section steel, Spray painting and galvanizing
2. Secondary Framing	
Purlin	Q235B Z and C sections purlin
Knee brace	Q235B angle steel, galvanized
Tie bar	Q235B round steel, painted
Bracing	Q235B round steel, galvanized
3. Roof and Wall panels	Steel sheet and insulated sandwich panels
Single steel sheet	0.5/0.6/0.7 color steel sheet
Sandwich panel	EPS/PU/Fiber glass wool/rock wool sandwich panel
4. Steel Decking Floor	V-688 Decking floor
5. Structural subsystem	Canopies, Fascias, Partitions, etc.
6. Mezzanines, Platforms	H beam
7. Other Building Accessories	Sliding Doors, Roll Up Doors, Windows, Louvers, etc.

Key Advantages

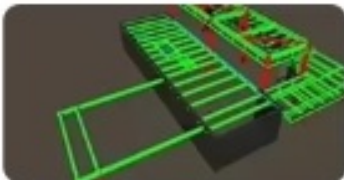
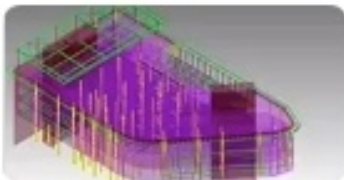
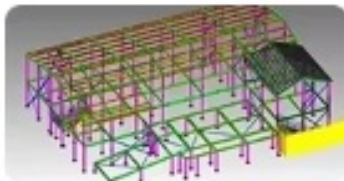
Exceptional Strength & Durability: High-grade steel construction withstands extreme weather including heavy snow, high winds, and seismic activity.

Cost-Effective & Efficient: Pre-engineered components reduce labor costs and construction time for faster ROI.

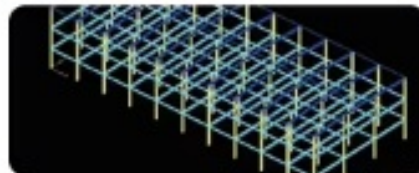
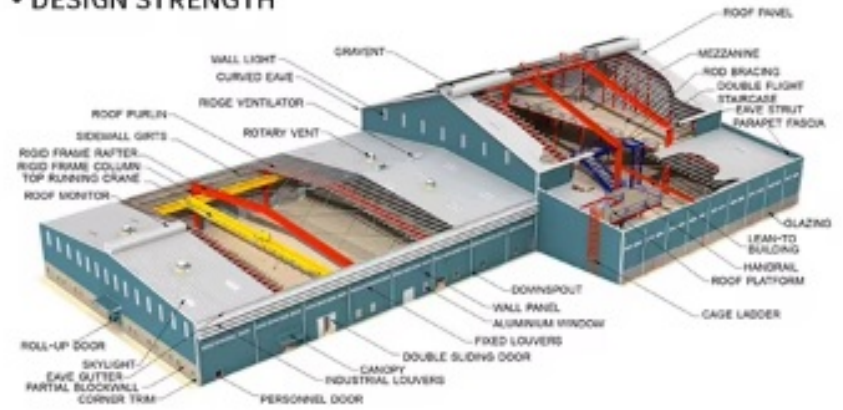
Design Flexibility: Customizable dimensions, layouts, and aesthetics with clear-span interiors eliminating support columns.

Low Maintenance & Eco-Friendly: Pest-resistant with protective coatings and 100% recyclable materials.

Technical Parameters



• DESIGN STRENGTH



Project Cases







Quality Inspection Standards

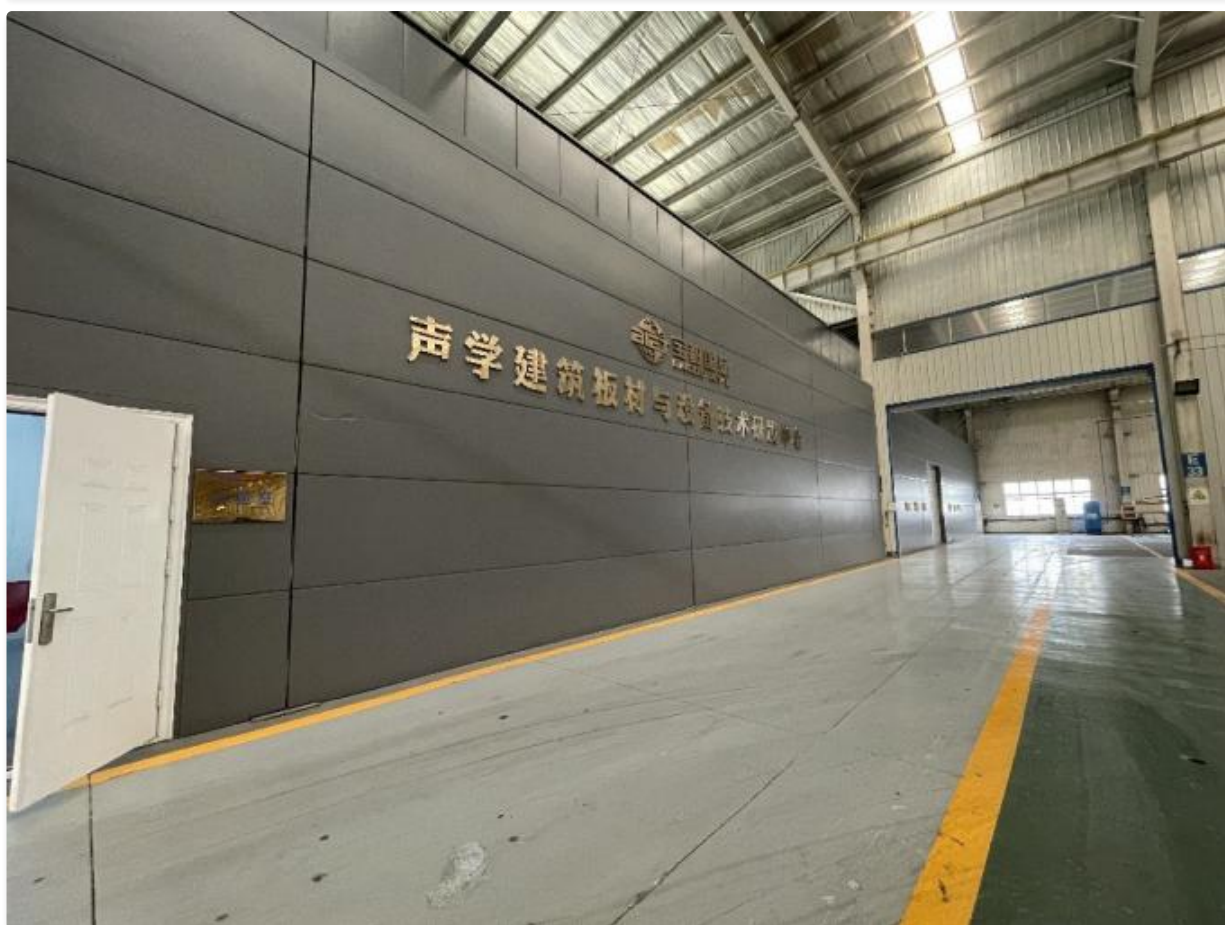




We implement whole-process quality management with professional inspection teams and advanced equipment, supporting SGS, TUV, BV testing and certification.

Capacity and Certification







OUR CERTIFICATE





Packing and Shipping





- Steel structure components with proper protection
- Sandwich panels covered with plastic film
- Bolts and accessories loaded into wooden boxes
- All items packed for ocean transport in 40'HQ containers

Frequently Asked Questions

Q1: Is your company a factory or trade company?

We are factory, so you can get the best price and competitive price.

Q2: What are your main products?

Our main products have steel structure, warehouse, workshop, prefab house, container house, steel poultry shed, steel car garage, steel aircraft hangar, light steel villa, sandwich panel and other construction materials.

Q3: What's the quality assurance you provided and how do you control quality?

Established a procedure to check products at all stages of the manufacturing process - raw materials, in process materials, validated or tested materials, finished goods, etc.

Q4: Do you offer guiding installation on site overseas for warehouse building?

Yes, we can provide the service of installation, supervision and training by extra. We can send our professional technical engineer to supervise installation on site overseas.

Q5: What should the client provide before you offer a complete quotation?

When we receive inquiry from client, please fill purchasing intention sheet, providing us with information of warehouse dimensions, draft drawing, layout and materials for prefabricated house. We will design the drawings and offer competitive quotation with the above information.

Q6: What kind of drawing will you provide?

Plan drawing, elevation drawing, sectional drawing, foundation drawing, installation drawing.

Q7: How many colors do your sandwich panels have?

Off-white, ivory white, blue, green, red and according to buyer's requirement.

Construction Process Video



Baodu International Advanced Construction Material Co., Ltd.



+86 13717927965



chunlei.song@baodu.com



baodupanel.com

No. 2, Yijin North Street, Daxing District, Beijing