

Custom Steel Structure Workshop for Export Prefabricated Light Steel Building Manufacturing Warehousing Agricultural Sheds Commercial Halls and Industrial Facilities

Our Product Introduction

Basic Information

- Place of Origin: Hebei, China
- Brand Name: BAODU
- Certification: ISO9001, CE
- Model Number: Steel Warehouse
- Minimum Order Quantity: 800 square meters
- Price: \$24-28 square meter
- Packaging Details: In general, for steel structure, we use the steel frame packing to keep goods not to be broken. For sandwich panel and color steel sheet, we use the plastic packing. If the clients need special packing will according to their requirements.
- Delivery Time: 30 days
- Payment Terms: L/C, D/A, D/P, T/T, Western Union, MoneyGram
- Supply Ability: 100000 Square Meter/Square Meters per Month



Product Specification

- Product Name: Custom Steel Structure Workshop For Export Prefabricated
- Processing Service: Bending, Welding, Decoiling, Cutting, Punching
- Bracing: Round Bar/Angle Steel/Steel Rod
- Design: SAP2000/AutoCAD /PKPM /3D3S/TEKLA
- Product Type: Steel Warehouse
- Roof And Wall: Sandwich Panel; Steel Plate
- Material: Q235/Q235B/Q355/Q355B
- Purlin: C.Z Shape Steel Channel
- Corrosion Protection: Hot-Dip Galvanizing
- Standard: AISI ASTM DIN JIS GB
- Highlight: **prefab steel warehouse for export, light steel building manufacturing, custom steel structure workshop**

Product Description

Custom Steel Structure Workshop for Export

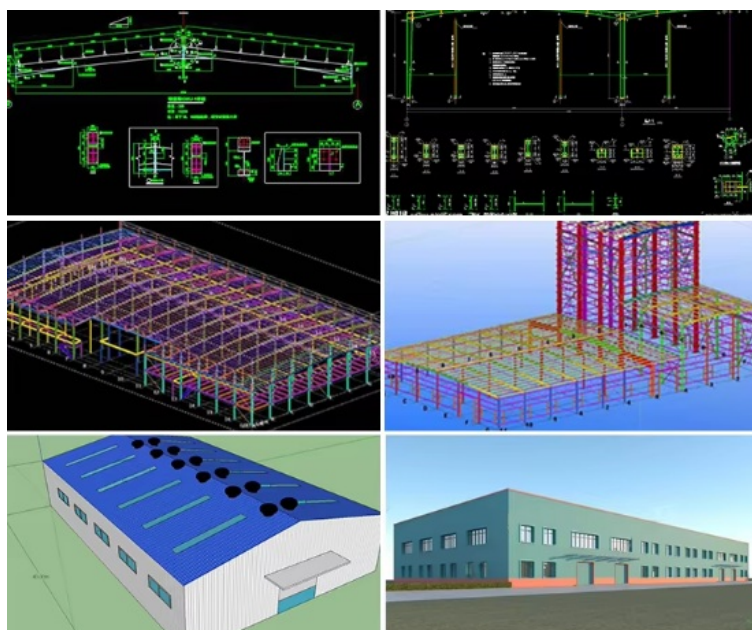
Prefabricated Light Steel Building Manufacturing for Warehousing, Agricultural Sheds, Commercial Halls and Industrial Facilities

Product Specifications

Structure	Part	Specification
Main Structure	Frame Column and Beam	Q355B H/I Section & As drawings
	Welding	Automatic Submerged Arc Welding
	Rust Removing	Shot Blasting
	Surface Processing	Coating or Galvanized
Secondary Structure	Purlin	C/Z Purlin Size from C120-C320,Z100~Z300
	Angle Brace	Q235B L-Steel
	Cross Brace/X Brace	Q235B Round Pipe
Roof System	Roofing Material	Sandwich Panel-Insulated PU/Glasswool/Rock Wool/EPS 50mm-200mm
	Skylight Panel	1.2mm FRP
	Gutter	Steel Gutter Galvanized/Coated 2.0mm-3.0mm
	Rainspout/Down Pipe	PVC Pipe
Wall System	Wall Material	Sandwich Panel-Insulated PU/Glasswool/Rock Wool/EPS 50mm-200mm
	Accessories	Sealant, Self-tapping Screw etc
	Edge Cover	Color Steel
Additional Features	Ventilator	Unpowered Axial-Flow Ventilator or Monitor Roof (Customizable)
	Door	Electric Rolling Door/Sliding Door/Access Side Door (Customizable)
	Window	Aluminum/PVC (Customizable)
	Crane	1-200 T (Customizable)

Packing: Main steel frame without packing load in 40' OT; Roof and wall panel load in 40' HQ!

Technical Parameters



Project Progress: Is Land Purchased? Is it licensed by the government?

Usage: for warehouse, workshop, showroom, etc.

Location: In which country will it be built?

Local Climate: Wind speed, Snow load (max. Wind speed)

Design: Please provide the design drawing. Or do you need us to design for you?

Dimension: Length*width*height

Crane Beam: Do you need crane beam inside the steel structure?

Roof and Wall: determine the panel material, such as color steel panel, and metal sandwich panel.

Windows and Doors: what material, quantity, and type?

Components



C Type Steel



Z Type Steel



H Type Steel



C Type Purlin



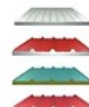
Z Type Purlin



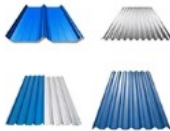
Un-powered Ventilator



Rainwater Pipe



EPS Sandwich Panel



Roof and Wall Panels



Square Tube



Tube



Steel Decking Floor



Steel Gutter



High Strength Bolt



Self-tapping Screw



Sliding Window

Project Cases







Industry-Specific Solutions

Logistics & Distribution: High-bay storage systems with narrow aisle compatibility

Advanced Manufacturing: Vibration-dampened floors for precision equipment

Food & Pharmaceutical: Hygienic designs with smooth, cleanable surfaces

Energy Sector: Explosion-resistant designs for hazardous environments

Advantages of Steel Structure Buildings

The components of the steel structure have small section, light weight, easy to transport and installation, suitable for large span, high height, heavy bearing structure.

Suitable for withstand impact and dynamic load, with good seismic performance. The internal structure of steel is uniform with high reliability.

Factory mechanized production of steel structure components finished products of high precision, high production efficiency, site assembly speed, short construction period.

Our prefabricated steel structure buildings are pre-cut, pre-drilled, and ready for quick and efficient assembly. Steel buildings work for virtually any building application: Agricultural/ Barns/ Aircraft Hangars/ Welding Shops/Commercial center/Garages/Storage/ Suburban Buildings/ Warehouses/ Workshops/school/wedding hall/dormitory etc.

Strict Quality Inspection Standards



Excellent product quality is our eternal pursuit, and it is also the fundamental reason for us to base ourselves on the global market. BAODU GROUP implements whole-process quality management and strictly supervises every process such as raw material supply, engineering design, steel component manufacturing, installation and construction.

We have established a professional team of quality inspection engineers, introduced internationally leading quality inspection equipment such as German GS1000 vacuum spectrometer and high-frequency infrared carbon sulfur analyzer, established a high-quality product inspection room, and won many awards from China's advanced quality management unit.

In addition, we support testing and certification by SGS, TUV, BV.

Certification



RUSSIAN FEDERATION 02353

**СИСТЕМА ДОБРОВОЛЬНОЙ СЕРТИФИКАЦИИ
ПОЖАРНОЙ БЕЗОПАСНОСТИ**
№ РОСС RU.32623.OC13ПБ.10362

СЕРТИФИКАТ СООТВЕТСТВИЯ
№ РОСС RU.32623.OC13ПБ.10362
(тип сертификата соответствия)

ЗАЯВИТЕЛЬ
(наименование и место нахождения заявителя)
Общество с ограниченной ответственностью "Перспектива"
Адрес: Российская Федерация, 125167, г. Москва, вн. тер. г. муниципальный округ Хорошевский, Проектиет Ленинградский, д. 47, стр. 2, помещение 28а
ОГРН: 1247700676750, телефон: +74955181399, адрес электронной почты: perspektiva2409@mail.ru

ИЗГОТОВИТЕЛЬ
(наименование и место нахождения изготовителя продукции)
Baodu International Engineering Technology Co., Ltd.
Адрес: Китай, Room 1101, Building 6, No. 9 Yard, Hongye Road, Daxing District, Beijing City
Телефон: +86 010-61237405

ОРГАН ПО СЕРТИФИКАЦИИ
(наименование и место нахождения органа по сертификации, выдавшего сертификат соответствия)
№ РОСС RU.32623.OC13ПБ Общество с ограниченной ответственностью «Эксперт», 129090, г. Москва, вн.тер.г. муниципальный округ Мещанский, ул. Щепкина, дом 28, помещ 2/5

ПОДТВЕРЖДАЕТ, ЧТО ПРОДУКЦИЯ
(наименование объекта сертификации, наименование сертификата)
Конструкция ограждающая стеновая на основе стеновых панелей, трехслойных, с облицовкой из стальных профилированных листов толщиной 0,6-1,0 мм, с утеплителем из минеральной ваты с плотностью не менее 100 кг/м³, общая толщина панели 100-350 мм. Торговая марка: BAODU.
Серийный выпуск.

СООТВЕТСТВУЕТ ТРЕБОВАНИЯМ
(наименование стандарта, пункта, условия, на соответствие которому (которым) производится сертификация)
ГОСТ 30244-94 «Материалы строительные. Методы испытаний на горючесть», раздел 6, метод 1. Материал относится к негорючим материалам (НГ), ГОСТ 32603-2021

ПРОВЕДЕННЫЕ ИССЛЕДОВАНИЯ (ИСПЫТАНИЯ) И ИЗМЕРЕНИЯ
Протокол испытаний № ИЛ113-62792 от 23.05.2025 года, выданной Испытательной лабораторией Общества с ограниченной ответственностью «Эксперт», аттестат аккредитации РОСС RU.32623.ИЛ113ПБ

ПРЕДСТАВЛЕННЫЕ ДОКУМЕНТЫ
(наименование документов, представленных заявителем в качестве доказательств соответствия продукции требованиям подлежащих документированных)

ДОПОЛНИТЕЛЬНАЯ ИНФОРМАЦИЯ
Схема сертификации: 1с

СРОК ДЕЙСТВИЯ СЕРТИФИКАТА СООТВЕТСТВИЯ
с 23.05.2025 по 22.05.2028

Руководитель органа
О.В. Ребрин
инженер, факсимиле

Эксперт
Т.А. Сибиракова
инженер, факсимиле

Сертификат не применяется при обязательной сертификации

QR code: Проверка подлинности сертификата соответствия



CERTIFICATE

ATTESTATION CERTIFICATE

The Company mentioned below has been audited by the Notified Body UDEM, according to relevant standard given below

Company Name : **Baodu International Advanced Construction Material Co., Ltd.**

Company Address : **No.26, Baihe Road, Yongqing Industrial Zone, Hebei Province, China**

Related Standards : **EN 14509:2013**

Product Name : **Insulated Metal Cladding**

Report No and Date : **BIACM210615001/15.06.2021**

Product Brand/Model/Type : **BD-100MM-IMC, BD-50MM-IMC, BD-75MM-IMC, BD-120MM-IMC, BD-150MM-IMC, BD-200MM-IMC**

Certificate Number : **M.2021.206.N8433**

Initial Assessment Date : **28.06.2021**

Registration Date : **29.06.2021**

Reissue Date/No : **-**

Expiry Date : **28.06.2026**

The currency of the certificate can be checked through www.udemild.com.tr. The CE mark shown on the right can only be used under the responsibility of the manufacturer with the completion of EC Declaration of Conformity for all the relevant Directives. This certificate remains the property of UDEM International Certification Auditing Training Centre Industry and Trade Co. Ltd. to whom it must be returned upon request. The above named firm must keep a copy of this certificate for 15 years from the registration of certificate. The above named firm must notify all changes related with the approved type to UDEM. If UDEM will not renew expiry date of this certificate in question
Address: Mutlukent Mahallesi 2073 Sokak (Eski 93 Sokak) No:10 Çankaya - Ankara - TURKEY
Phone: +90 0312 443 03 90 Fax: +90 0312 443 03 76
E-mail: info@udemild.com.tr www.udemild.com.tr

UDEM International Certification
Auditing Training Centre Industry
and Trade Inc. Co.



Company Profile



Baodu International Advanced Construction Material Co., Ltd was established in January 2010 with the office in Beijing and factory in Hebei, China. Baodu is a designer, manufacturer, supplier and exporter of industrial noise comprehensive treatment, steel structure, sandwich panel and prefab house.

Baodu has an annual output of 6 million square meters of acoustic sandwich panels, 100000 tons of steel structures and 1 million square meters of floor decking sheet. The products are sold in more than 30 countries and regions around the world.

Baodu has a professional design team with more than 10 years' experience, including 5 senior engineers, 20 engineers, and 35 technicians. Baodu has several energy saving and environment protection intellectual property rights, construction and environment protection design qualification, CE certification and Russian GOST certification etc.

Baodu participated in the military parade village project for the 60th anniversary of China and project of Beijing Daxing International Airport. Under the guidance of China's "one belt, one road" strategy, Baodu has also undertaken overseas projects such as the project of Thar, Pakistan coal fired power plant, Hasyan Dubai power plant and so on. Finally, welcome your coming to Baodu for a visit and cooperation!

Packing and Shipping



Packaging Details:

Steel structure components will be in packaging with proper protection.

Sandwich panels will be covered with plastic film.

Bolts and other accessories will be loaded into wooden Boxes

All the structure components, panels, bolts and sorts of accessories will be well packed with standard package suitable for ocean transport and loaded into 40'HQ.

All the products are loaded at the loading site of our factory using crane and forklift by our skilled workers, who will prevent the goods to be damaged.

Good relationship with many vessel companies to make sure the transportation smooth.

Frequently Asked Questions

1. Are you a manufacturing factory or a trading company?

Firstly, we are an export company affiliated to a group company, mainly responsible for the export business of the steel structure products of the group company. You are welcome to visit us at any time. We can ensure good quality and competitive prices.

2. How is your quality control?

Our products have obtained certifications from ISO9001, CE.

3. Can you provide design services?

Yes, we have an engineering team that can design for you according to your requirements. We will prepare construction drawings, structural drawings, processing details, and installation drawings and allow you to confirm them at different times of the project.

4. Do you provide samples?

Are samples charged or free? Yes, we can provide samples. But you need to pay for the freight.

5. What is the delivery time?

The delivery time depends on the size and quantity of the building. Generally, it will be delivered within 15-30 days after receiving the payment. Large orders allow for partial shipments.

6. Do you offer installation services?

We will provide you with detailed construction drawings and installation manuals to assist you in the step-by-step installation and construction of the building. If necessary, we can also send engineers to your location to help you.

7. How can I get your quotation?

You can contact us either online or via email. If you have the drawings, we can quote based on your drawings. Otherwise, please let us know the length, width, eave height of the building and the local weather conditions so that we can provide you with an accurate quotation and drawings.

8. How is your payment method?

A 50% deposit is required before production, and the remaining 50% will be paid based on the copy of the bill of lading or a letter of credit.



Baodu International Advanced Construction Material Co., Ltd.



+86 13717927965



chunlei.song@baodu.com



baodupanel.com

No. 2, Yijin North Street, Daxing District, Beijing