



Prefabricated Workshop Prefab Steel Metal Factory Building Design Steel Structure Warehouse

Our Product Introduction

Basic Information

- Place of Origin: Hebei, China
- Brand Name: BAODU
- Certification: ISO9001, CE
- Model Number: Steel Warehouse
- Minimum Order Quantity: 300 square meters
- Price: \$30-45 square meter
- Packaging Details: In general, for steel structure, we use the steel frame packing to keep goods not to be broken. For sandwich panel and color steel sheet, we use the plastic packing. If the clients need special packing will according to their requirements.
- Delivery Time: 30 days
- Payment Terms: L/C, D/A, D/P, T/T, Western Union, MoneyGram
- Supply Ability: 100000 Square Meter/Square Meters per Month



Product Specification

- Product Name: Prefabricated Workshop Prefab Steel Metal Factory Building Design Steel Structure Warehouse
- Processing Service: Bending, Welding, Decoiling, Cutting, Punching
- Bracing: Round Bar/Angle Steel/Steel Rod
- Design: SAP2000/AutoCAD /PKPM /3D3S/TEKLA
- Using Life: More Than 50 Years
- Corrosion Protection: Hot-Dip Galvanizing
- Product Type: Steel Warehouse
- Life Time: More Than 50 Years
- Project Solution Capability: 3D Model Design
- Highlight: **prefab steel warehouse building, metal factory building design, steel structure warehouse with warranty**

Prefabricated Workshop Prefab Steel Metal Factory Building Design Steel Structure Warehouse

Product Overview

Our steel structures represent the pinnacle of modern engineering, combining mathematical precision with industrial strength. Each component is digitally designed and manufactured to create integrated structural systems that deliver unmatched performance.

Advanced Structural Properties

Load Optimization: Computer-optimized designs that efficiently distribute live loads (up to 250 kg/m²), wind loads (up to 200 km/h), and seismic forces

Dynamic Load Capacity: Specialized designs for crane systems (5-50 ton capacity) with reinforced support structures

Thermal Efficiency: U-values as low as 0.25 W/m²K through advanced composite insulation systems

Material Science Leadership

We utilize high-strength low-alloy (HSLA) steels with yield strengths ranging from 345 MPa to 460 MPa. Our proprietary corrosion protection system combines:

Multi-stage surface preparation (SA 2.5 standard)

Hot-dip galvanizing (minimum 85µm zinc thickness)

Advanced polymer coatings (PVDF/HDP finishes)

Custom Engineering Solutions

Design Flexibility:

Clear spans from 15m to 150m without internal supports

Eave heights from 6m to 40m for multi-level operations

Custom bay spacing optimized for your operational workflow

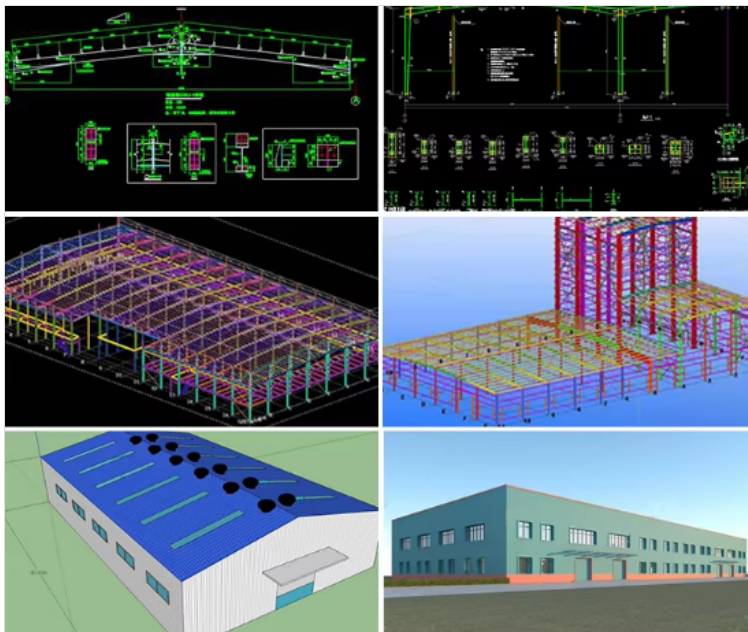
Specialized Configurations:

Multi-Span Complexes: Integrated designs for large-scale manufacturing campuses

Hybrid Structures: Steel-concrete composite systems for heavy industrial applications

Temperature-Controlled: Insulated panel systems with air-tight seals for sensitive environments

Technical Parameters



Could you tell me your requirement for your steel structure project?

Basic design requirements and design Load:

Project site location

Overall dimension (length*width*eave height in meters)

Mezzanine or not? How many kgs of load per square meter on mezzanine?

Single-layer steel sheet wall or sandwich panel wall

Snow load if applicable

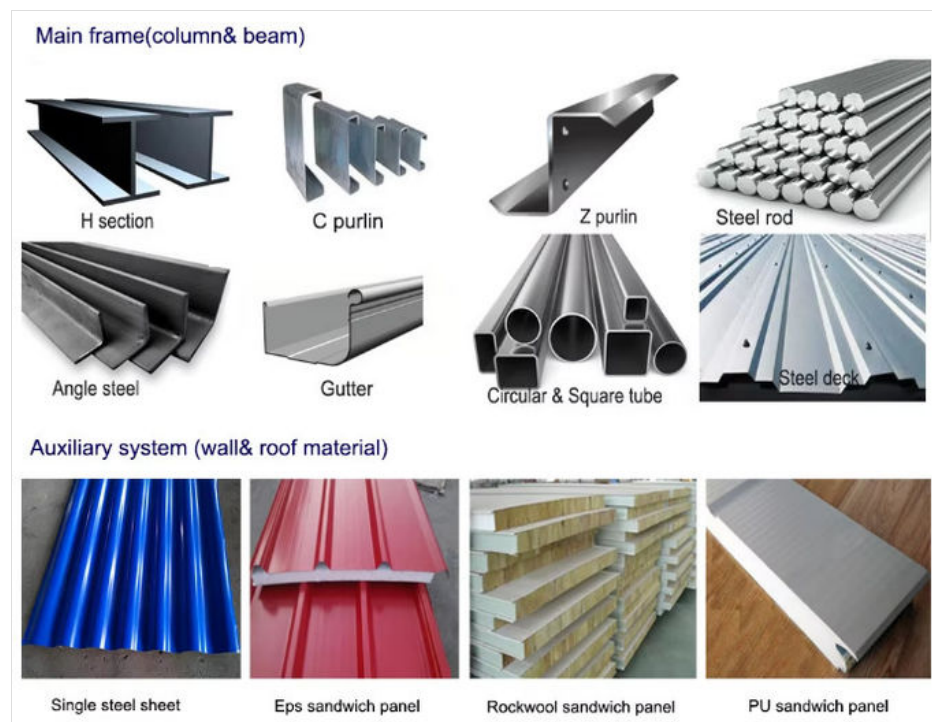
Wind speed/load

Interior column allowed or not

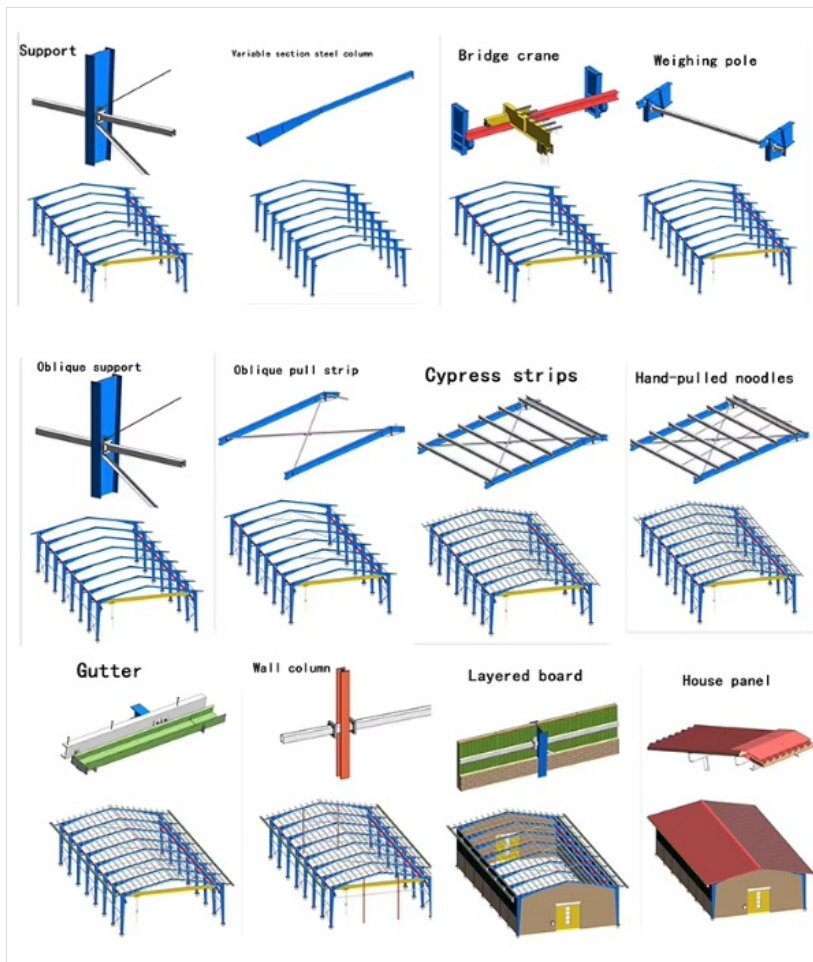
Overhead crane needed or not, capacity?

Any other particular requirements?

Components



Steel Building Process



Phase 1: Digital Prototyping

- 3D modeling and virtual reality walkthroughs
- Finite element analysis for stress optimization
- Energy modeling and lifecycle cost analysis

Phase 2: Precision Manufacturing

- CNC machining with $\pm 1\text{mm}$ tolerance
- Automated welding (AWS D1.1 standards)
- Quality verification through ultrasonic testing

Phase 3: Global Logistics Management

- Expert cargo optimization for container and break-bulk shipments
- Comprehensive insurance coverage
- Real-time shipment tracking

Phase 4: Commissioning Support

- Detailed erection sequencing plans
- On-site technical supervision available
- Operations and maintenance training

Project Cases





Logistics & Distribution: High-bay storage systems with narrow aisle compatibility

Advanced Manufacturing: Vibration-dampened floors for precision equipment

Food & Pharmaceutical: Hygienic designs with smooth, cleanable surfaces

Energy Sector: Explosion-resistant designs for hazardous environments

Advantages of Steel Structure Buildings

1. The components of the steel structure have small section, light weight, easy to transport and installation, suitable for large span, high height, heavy bearing structure.
2. Suitable for withstand impact and dynamic load, with good seismic performance. The internal structure of steel is uniform with high reliability.
3. Factory mechanized production of steel structure components finished products of high precision, high production efficiency, site assembly speed, short construction period.

Our prefabricated steel structure buildings are pre-cut, pre-drilled, and ready for quick and efficient assembly. Steel buildings work for virtually any building application: Agricultural/ Barns/ Aircraft Hangars/ Welding Shops/Commercial center/Garages/Storage/ Suburban Buildings/ Warehouses/ Workshops/school/wedding hall/dormitory etc.

Strict Quality Inspection Standards

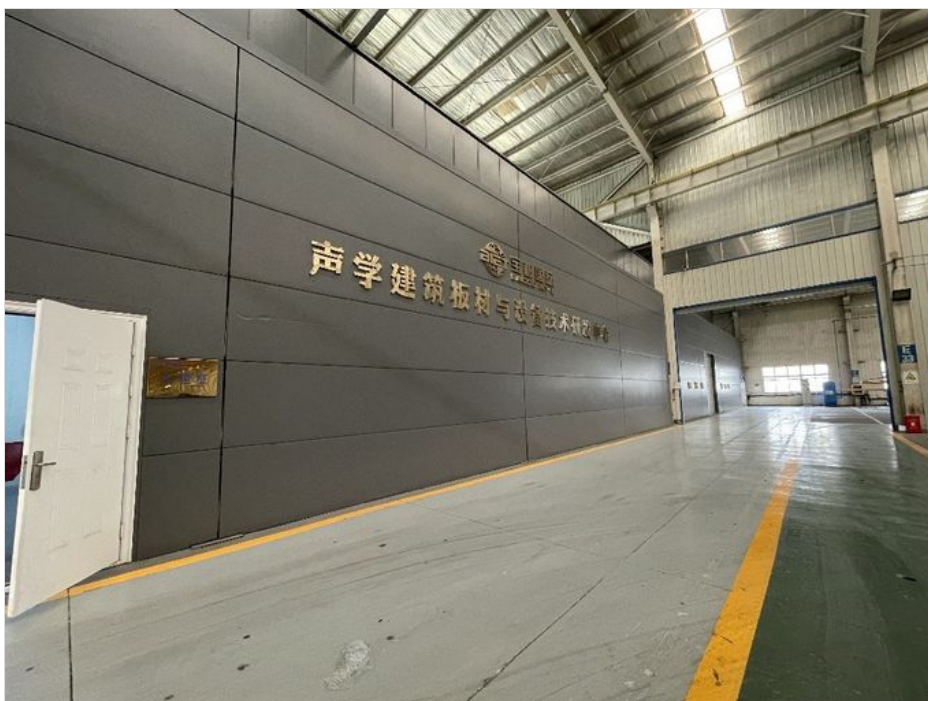
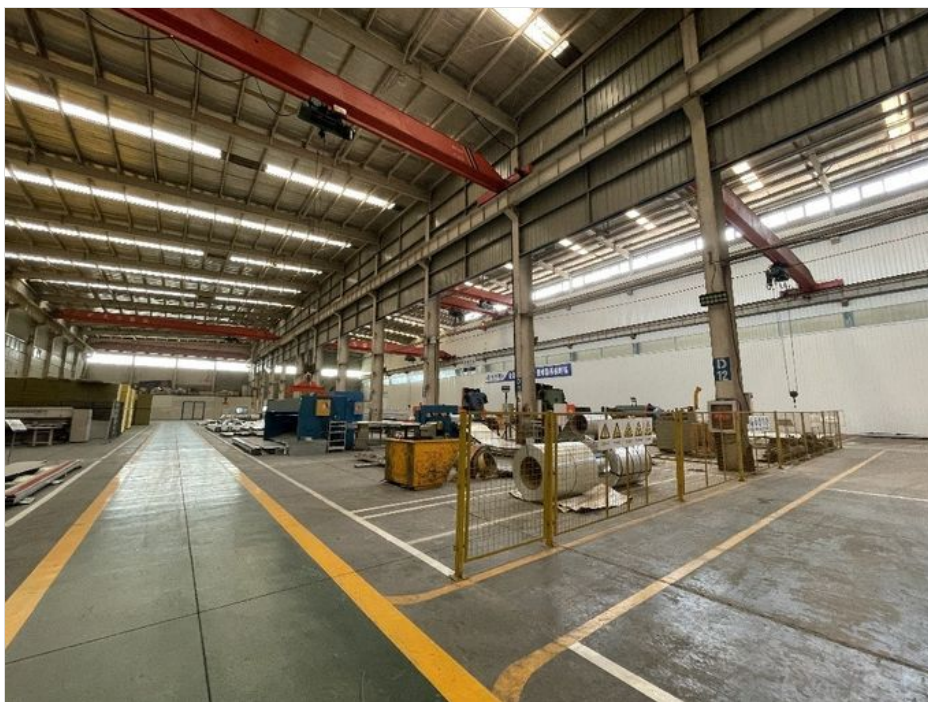


Excellent product quality is our eternal pursuit, and it is also the fundamental reason for us to base ourselves on the global market. BAODU GROUP implements whole-process quality management and strictly supervises every process such as raw material supply, engineering design, steel component manufacturing, installation and construction.

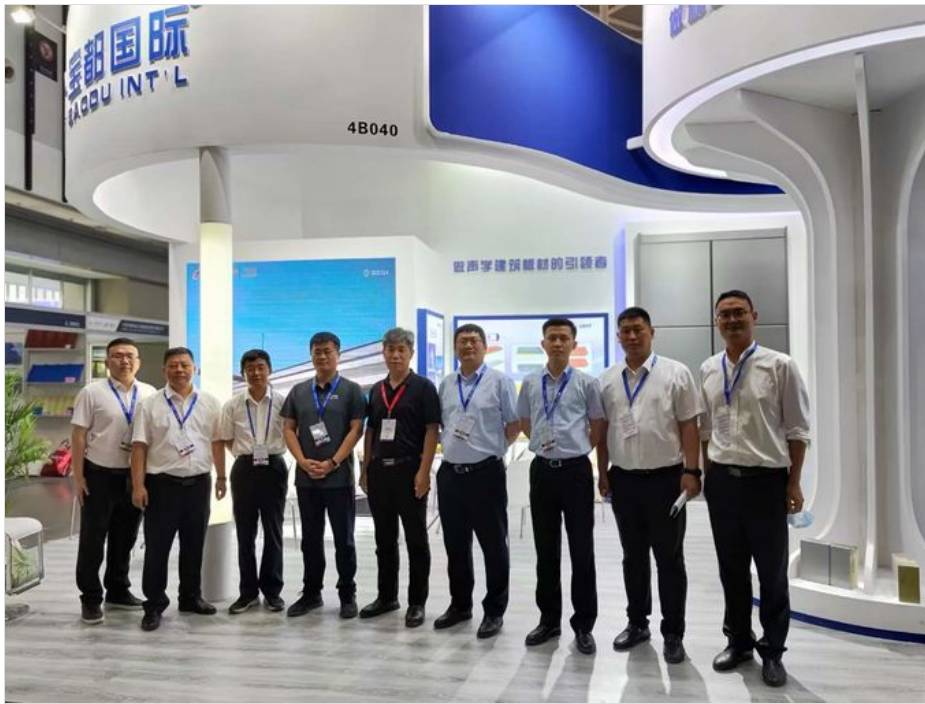
We have established a professional team of quality inspection engineers, introduced internationally leading quality inspection equipment such as German GS1000 vacuum spectrometer and high-frequency infrared carbon sulfur analyzer, established a high-quality product inspection room, and won many awards from China's advanced quality management unit.

In addition, we support testing and certification by SGS, TUV, BV.





Support and Services







Why Partner With Us?

Proven Track Record:

- 25+ years of specialized experience
- 500+ successful international projects
- 98% on-time delivery record
- 24/7 technical support availability

Value-Added Services:

- Financing Solutions: Flexible payment terms and project financing
- Warranty Package: Comprehensive 25-year structural warranty
- After-Sales Support: Spare parts program and maintenance contracts

Company Profile

Baodu International Advanced Construction Material Co., Ltd was established in January 2010 with the office in Beijing and factory in Hebei, China. Baodu is a designer, manufacturer, supplier and exporter of industrial noise comprehensive treatment, steel structure, sandwich panel and prefab house.

Baodu has an annual output of 6 million square meters of acoustic sandwich panels, 100000 tons of steel structures and 1 million square meters of floor decking sheet. The products are sold in more than 30 countries and regions around the world.

Baodu has a professional design team with more than 10 years' experience, including 5 senior engineers, 20 engineers, and 35 technicians. Baodu has several energy saving and environment protection intellectual property rights, construction and environment protection design qualification, CE certification and Russian GOST certification etc.

Baodu participated in the military parade village project for the 60th anniversary of China and project of Beijing Daxing International Airport. Under the guidance of China's "one belt, one road" strategy, Baodu has also undertaken overseas projects such as the project of Thar, Pakistan coal fired power plant, Hasyan Dubai power plant and so on. Finally, welcome your coming to Baodu for a visit and cooperation!

Packing and Shipping





Packaging Details:

Steel structure components will be in packaging with proper protection.

Sandwich panels will be covered with plastic film.

Bolts and other accessories will be loaded into wooden Boxes

All the structure components, panels, bolts and sorts of accessories will be well packed with standard package suitable for ocean transport and loaded into 40'HQ.

All the products are loaded at the loading site of our factory using crane and forklift by our skilled workers, who will prevent the goods to be damaged.

Good relationship with many vessel companies to make sure the transportation smooth.

FAQ

Q1: You are manufacture factory or trading company?

A: We are manufacture factory. And you are welcomed to visit us at any time for inspection. The quality control flow and sales team will show you our professionalism. Also, you will get best and most competitive price after visiting us.

Q2: What the quality assurance you provided and how do you control quality?

A: Established a procedure to check products at all stages of the manufacturing process - raw materials, in process materials, validated or tested materials, finished goods, etc. SGS, BV and other testing are available for us. We could deal with you by Trade Assurance via Alibaba.

Q3: Is your price competitive compared with other companies?

A: Our business objectives are to give the best price with same quality and best quality with the same price. We will do everything we can to reduce your cost and guarantee you get the best product that you paid for.

Q4: Can you send engineers or whole team to install my project?

A: Yes, we will send you the detailed installation drawing and video for free, we can provide the service of installation, supervision, and training by extra. We can send our professional technical team to supervise installation on site overseas.

Q5: Do you accept container loading inspection?

A: You are welcomed to send an inspector, not only for the container loading, but any time during the production time.

Q6: Do you offer designing service for us?

A: Yes, we could design full solution drawings as your requirements. By using AutoCAD, PKPM, MTS, 3D3S, Tarch, Tekla Structures (Xsteel) etc., we can design complex industrial building like office mansion, super marker, auto dealer shop, shipping mall, 5 stars hotel.

Q7: What is the delivery time?

A: Delivery time depends on order quantities. In general, the delivery time to nearest seaport in China will be 30 days after receiving deposit.

Q8: How can you get a quotation for your projects?

A: You can contact us by email, phone, Alibaba TM, WhatsApp, Skype, Viber and so on 24*7 and you will get reply within 8 hours.

Q9: How to ensure the product you supply is what we want exactly?

A: Before placing order, our sales and engineers' team will provide you the suitable solution according to your requirements. Proposal drawing, 3D drawing, Materials' photos, finished projects photos are available, which will help you understand the solution we provided deeply.



Baodu International Advanced Construction Material Co., Ltd.



+86 13717927965



chunlei.song@baodu.com



baodupanel.com

No. 2, Yijin North Street, Daxing District, Beijing