

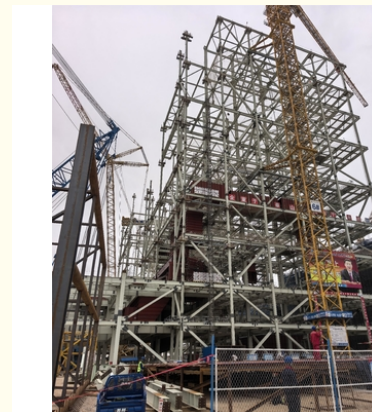


## High Quality ASTM A36 Carbon Steel Structure Prefab Office Building Light Metal Building for Workshop and Warehouse Storage

### Our Product Introduction

#### Basic Information

- Place of Origin: Hebei, China
- Brand Name: BAODU
- Certification: ISO9001, CE
- Model Number: Steel Warehouse
- Minimum Order Quantity: Discussible
- Price: Reasonable
- Packaging Details: In general, for steel structure, we use the steel frame packing to keep goods not to be broken. For sandwich panel and color steel sheet, we use the plastic packing. If the clients need special packing will according to their requirements.
- Delivery Time: 15-21 days
- Payment Terms: L/C, D/A, D/P, T/T, Western Union, MoneyGram
- Supply Ability: 10000 Square Meter/Square Meters per Month



#### Product Specification

- Product Name: High Quality ASTM A36 Carbon Steel Structure Prefab Office Building Light Metal Building For Workshop And Warehouse Storage
- Roof & Wall Panel: Color Steel Veneer, Rockwool Sandwich Panel, PU Sandwich Panel Etc
- Window: Aluminum Alloy Window, Plastic Steel
- Keyword: Steel Structure Building Warehouse
- Purlin: C/Z Galvanized Steel(Q235)
- Application: Warehouse, factory, prefab House, poultry House
- Service Life: 50 Years
- Structure: Steel Structure Frame Welded
- Design Software: AutoCAD /PKPM /3D3S/TEKLA
- Surface Treatment: Hot Dip Galvanized Or Painted
- Design Style: Modern
- Highlight: ASTM A36 carbon steel prefab building

## Product Description

### High Quality ASTM A36 Carbon Steel Structure Prefab Office Building

#### Product Attributes

Attribute	Value
Product Name	High Quality ASTM A36 Carbon Steel Structure Prefab Office Building Light Metal Building for Workshop and Warehouse Storage
Roof & Wall Panel	Color Steel Veneer, Rockwool Sandwich Panel, PU Sandwich Panel Etc
Window	Aluminum Alloy Window, Plastic Steel
Keyword	Steel Structure Building Warehouse
Purlin	C/Z Galvanized Steel(Q235)
Application	warehouse, factory, prefab house, poultry house
Service Life	50 Years
Structure	Steel Structure Frame Welded
Design Software	AutoCAD /PKPM /3D3S/TEKLA
Surface Treatment	Hot Dip Galvanized or Painted
Design Style	Modern

#### Product Description

Steel structure warehouse features high fire resistance and strong corrosion resistance. The main bearing components are composed of steel, including steel columns, steel beams, steel structures, and steel roof trusses. Each component is connected using welds, bolts, or rivets.

The roof and wall can be made of composite panel or veneer. Galvanized sheet metal prevents rust and corrosion. Self-tapping screws make the connection between plates more closely, preventing leakage. Composite panels for roof and wall with polystyrene, glass fiber, rock wool, or polyurethane sandwich provide good thermal insulation, heat insulation, and fire-retardant properties.

Usage scale includes large-scale workshops, warehouses, supermarkets, entertainment centers, and modular steel structure garages.

#### Features

Main Steel Frame	
Column	Q235, Q355 H section steel
Beam	Q235, Q355 welded H section steel/hot-rolled H section steel
Secondary Frame	
Steel purlin	Q235 C/Z section purlin or square tube
Knee brace	Q235 Angle steel
Tie Rod	Q235 Circular Steel Pipe
Brace	Q235 Round Bar



Snow load (max. Snow height)\_\_\_\_kn/m2, \_\_\_\_mm

Anti-earthquake \_\_\_\_level

Brickwall needed or not If yes, 1.2m high or 1.5m high

Thermal insulation If yes, EPS, fiberglass wool, rockwool, PU sandwich panels will be suggested; If not, the metal steel sheets will be ok.

Door quantity & size \_\_\_\_units, \_\_\_\_ (width)mm\* \_\_\_\_ (height)mm

Window quantity & size \_\_\_\_units, \_\_\_\_ (width)mm\* \_\_\_\_ (height)mm

Crane needed or not If yes, \_\_\_\_units, max. Lifting weight\_\_\_\_tons; Max. Lifting height \_\_\_\_m.

## Applications







**Support and Services**







Packing and Shipping









## Product Packaging

All steel components are packaged in bundles and secured with steel straps

Wall and roof panels are packaged in crates

All hardware and accessories are packaged in boxes

Assembly instructions and drawings are included in each package

## Shipping

The prefab steel warehouse will be shipped in containers by sea or land transport

Delivery time depends on destination and shipping method selected

Customers receive notification of expected delivery date and tracking information

Delivery fees calculated based on destination and shipment weight

Customs clearance and import duties are customer's responsibility

## What is Steel Structure?

The steel structure is a load-bearing structural system mainly composed of steel materials, constructed through welding and bolt connection methods. It consists of core components such as steel beams, steel columns, steel trusses, and steel plates with diverse cross-section forms.

I-shaped steel beams bear lateral loads, square steel columns support vertical loads, and steel trusses are suitable for large-span roof structures. As the core framework of modern buildings, steel structures are renowned for their high strength, light weight, and modular design, making them ideal for high-rise buildings, industrial factories, and bridge engineering.

## Frequently Asked Questions

### Q1: How long is the delivery time?

A: The delivery period varies, but it usually takes 2 weeks to prepare the drawings and 6-8 weeks for delivery (depending on complexity).

### Q2: Why choose BAODU?

A: We have more than 20 years of experience in metal buildings. We are a reputable manufacturer that cares about your needs and values your business.

**Q3: How can I get a quotation?**

A: Please provide information about house dimensions, draft drawing, layout and materials for prefabricated house. We will design the drawings and offer competitive quotation.

**Q4: Do you provide design services?**

A: Yes, we provide complete project drawings using AutoCAD, PKPM, MTS, 3D3S, Tarch, Tekla, etc., for complex industrial buildings.

**Q5: What are main materials of prefabricated house?**

A: Materials include light steel structure, sandwich panel, roof tile, door, window, covers, screws and other accessories.

**Q6: Do you provide samples?**

A: Yes, we provide free samples, but shipping costs are not covered.

**Q7: How do you carry out quality control?**

A: We have a professional quality control team with advanced inspection equipment and accept third-party inspections.

**Q8: Can you provide installation assistance?**

A: We provide detailed installation guides and can send engineers for assistance (visa fees, air tickets, accommodation and wages are buyer's responsibility).



**Baodu International Advanced Construction Material Co., Ltd.**



+86 13717927965



chunlei.song@baodu.com



baodupanel.com

No. 2, Yijin North Street, Daxing District, Beijing