



## China Supplier Workshop Industrial Commercial Prefabricated Steel Structure Warehouse Building

### Our Product Introduction

#### Basic Information

- Place of Origin: Hebei, China
- Brand Name: BAODU
- Certification: ISO9001, CE
- Model Number: Steel Warehouse
- Minimum Order Quantity: Discussible
- Price: Reasonable
- Packaging Details: In general, for steel structure, we use the steel frame packing to keep goods not to be broken. For sandwich panel and color steel sheet, we use the plastic packing. If the clients need special packing will according to their requirements.
- Delivery Time: 21 days
- Payment Terms: L/C, D/A, D/P, T/T, Western Union, MoneyGram
- Supply Ability: 10000 Square Meter/Square Meters per Month



#### Product Specification

- Product Name: China Supplier Workshop Industrial Commercial Prefabricated Steel Structure Warehouse Building
- Processing Service: Bending, Welding, Decoiling, Cutting, Punching
- Structure: Steel Structure Frame Welded
- Surface Treatment: Hot Dip Galvanised Or Painted
- Main Frame: Solid H-shape Steel Beam
- Roof & Wall Panel: Color Steel Veneer, Rockwool Sandwich Panel, PU Sandwich Panel Etc
- Life Span: Designed For 50 Years
- After-sale Service: Online Technical Support, Onsite Installation,
- Application: Office Building, Sports Venues, Mall, Supermarket
- Design Style: Modern
- Highlight: **prefabricated steel warehouse building, industrial steel structure warehouse,**

Product Description

China Supplier Workshop Industrial Commercial Prefabricated Steel Structure Warehouse Building

Product Attributes

Attribute	Value
Product name	China Supplier Workshop Industrial Commercial Prefabricated Steel Structure Warehouse Building
Processing Service	Bending, Welding, Decoiling, Cutting, Punching
Structure	Steel Structure Frame Welded
Surface treatment	Hot Dip Galvanised Or Painted
Main frame	Solid H-shape Steel Beam
Roof & Wall Panel	Color Steel Veneer, Rockwool Sandwich Panel, PU Sandwich Panel Etc
Life Span	Designed for 50 years
After-sale Service	Online technical support, Onsite Installation
Application	Office Building, Sports Venues, Mall, supermarket
Design Style	Modern

Product Description

Hebei Baodu Prefabricated Steel Structure Building Products:

**Lightweight Steel Structures:** Used for small to medium-sized buildings such as warehouses, factories, and commercial spaces. They are cost-effective, lightweight, and quick to assemble.

**Heavy Steel Structures:** Suitable for large-scale buildings like industrial factories, bridges, airports, and stations, these structures have high load-bearing capacities.

**Multi-story & High-rise Steel Structures:** Used in office buildings, residential complexes, and mixed-use developments. They offer seismic resistance and fast construction timelines.

Industrial Steel Structures building:

Factories/Warehouses: Steel structures for industrial facilities, including both single-story and multi-story factory buildings.

Storage Warehouses: Tailored steel structures for storage and logistics needs.

Special Steel Structures

Prefabricated Steel Modules: Used for modular construction, allowing for quick installation of pre-assembled units.

Space Frame Structures: Ideal for large-span structures like stadiums, exhibition halls, and airport terminals.

Steel Curtain Walls: Used for building facades in commercial office buildings, creating a modern aesthetic while offering durability.

Supporting Products & Services

Roof and Wall Systems: Including color-coated steel panels, insulated sandwich panels, and other weather-resistant materials for efficient thermal insulation and waterproofing.

Corrosion & Fire Protection Coatings: Specialized coatings to protect steel from corrosion and to enhance fire safety.

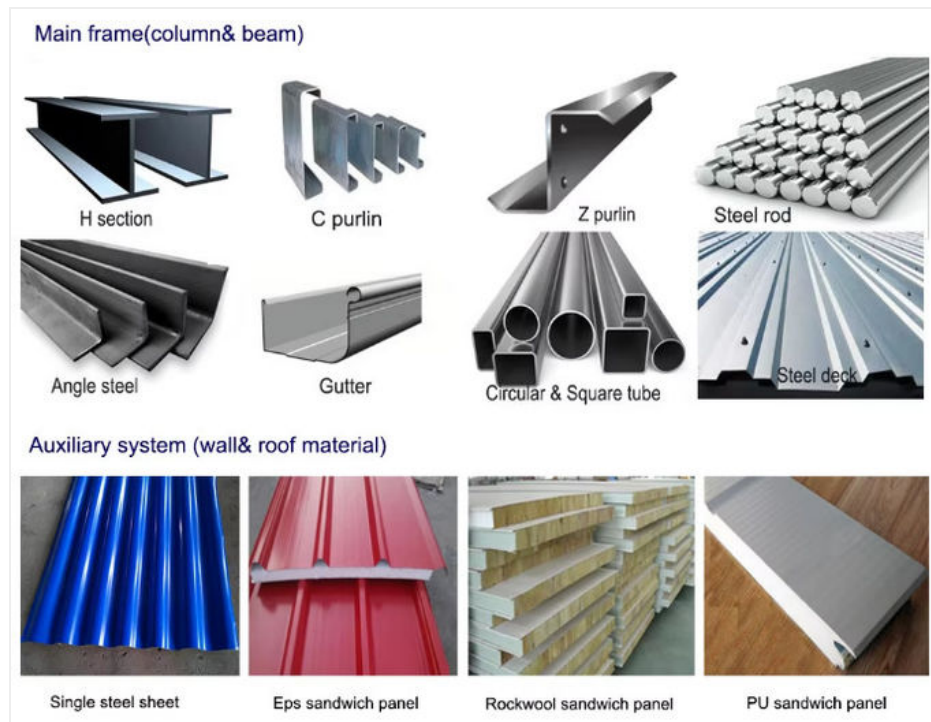
Design and Installation Services: Comprehensive services, including structural design, engineering, and on-site

construction support.

## Features

ITEMS	SPECIFICATION
<b>Main Steel Frame</b>	
Column	Q235,Q355 Welded H Section Steel
Beam	Q235,Q355 Welded H Section Steel
<b>Secondary Frame</b>	
Purlin	Q235 C and Z purlin
Knee Brace	Q235 Angle Steel
Tie Rod	Q235 Circular Steel Pipe
Brace	Q235 Round Bar
Vertical and Horizontal Support	Q235 Angle Steel, Round Bar or Steel Pipe
<b>Maintenance System</b>	
Roof System	Roof Panel (EPS/Fiber Glass Wool/Rock Wool/PU Sandwich Panel or Steel Sheet Cover) and Accessories
Wall System	Wall Panel (Sandwich Panel or Corrugated Steel Sheet)
Window System	Aluminum Alloy Window/ PVC Window/Skylight
Door System	Sliding Sandwich Panel Door/Rolling Metal Door/PVC Door
Others	PVC Rainspout,Gutter etc
Wind Resistance Grade	11 Grades
Earthquake-resistance	7 Grades
Structure life span	Up to 50 years
Temperature	Suitable temperature -50 ~+50
Certification	CE, SGS, ISO9001:2008, ISO 14001:2004
Finishing Options	Vast array of colors and textures available
Paint Options	Alkyd painting, two primary painting, two finish painting(gray paint, red paint, white paint, epoxy zinc etc.) or Galvanized.

## Steel Materials List



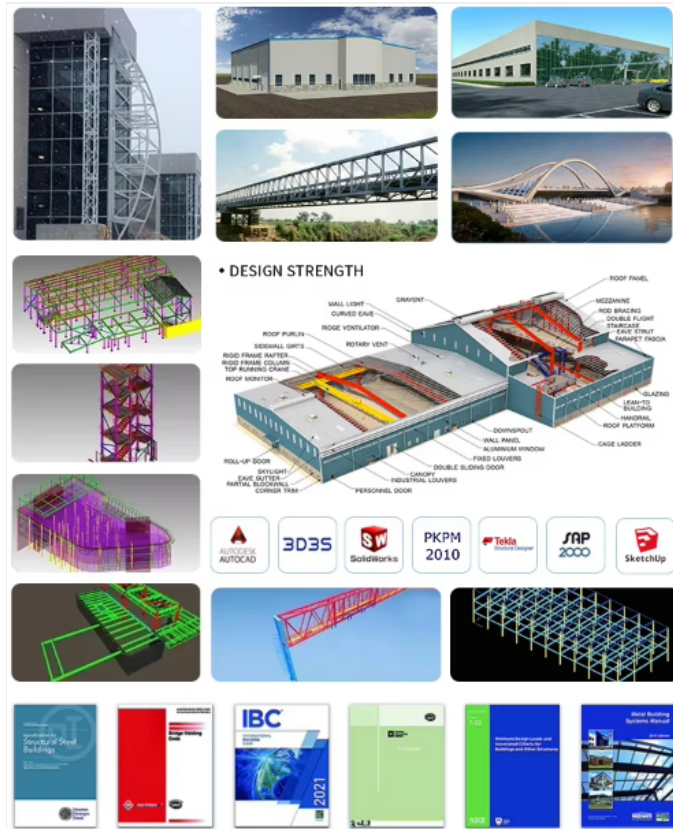
## 1. Main Steel Structure

- A. The Main steel structure: Q355B Q235B H column Beam
- B. Secondary Steel Structure: Q355B Q235B Square tube/ angle iron/ circular tube etc
- C. Purlin: Hot dipped galvanized C Z shape purlin
- D. Floor decking: Hot dipped galvanized 688 / 750 type decking sheet

## 2. Roof and Wall System

- A. Corrugated steel sheet
- B. Sandwich Panel: EPS/ Rock wool/ Riberglass /Polyurethane(PU) sandwich panel
- C. Steel wire / steel sheet+ Fiberglass wool roll

## Technical Parameters



Location (Where will be built): \_\_Country \_\_area

Size ( length\* width\* height ): \_\_ m\* \_\_ m\* \_\_ m\*

Wind speed: \_\_KM/H

Snow load: \_\_KG/m<sup>2</sup>

Anti-earthquake: \_\_level

Brickwall need or not? If yes, 1.2m high or 1.5m high?

Thermal insulation: If yes, fiberglass wool, rock wool, PU sandwich panels will be suggested; if not, the metal steels will be ok. The cost of the latter will be much lower than that of the former.

Door quantity & size: \_\_units \_\_ (width)m \_\_ (height)m

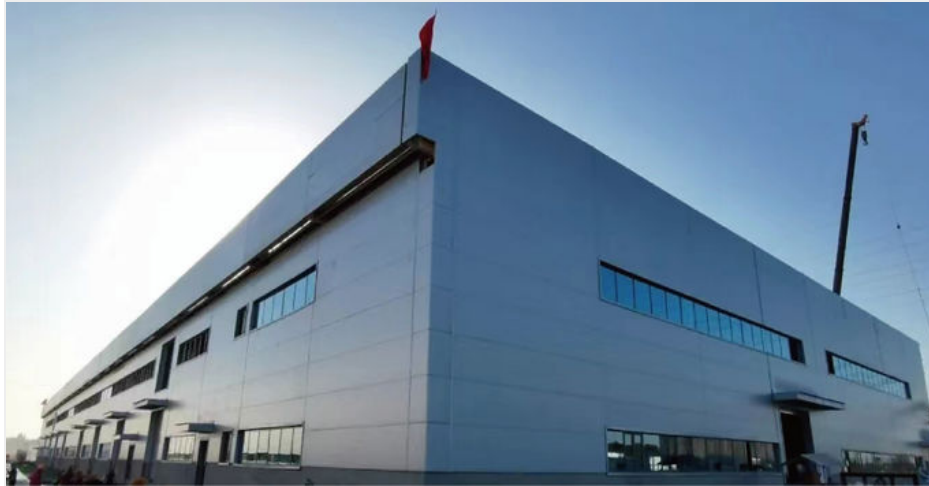
Window quantity & size: \_\_units \_\_ (width)m \_\_ (height)m

Crane needed or not: If yes, \_\_units, crane max lift height \_\_m, max lift capacity \_\_tons.

## Applications







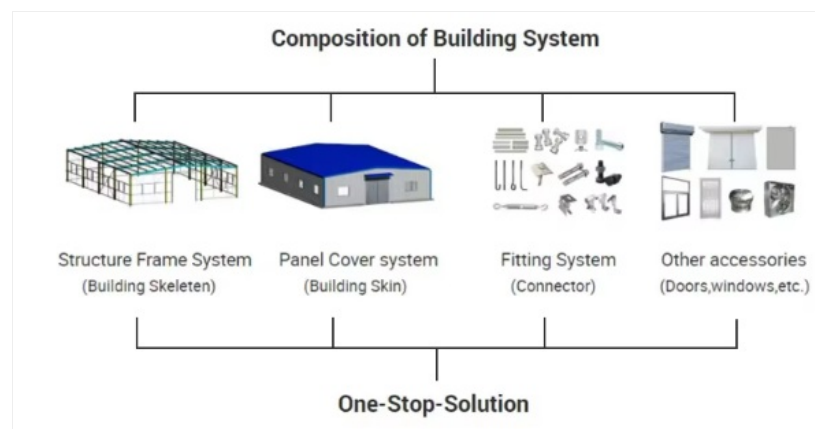
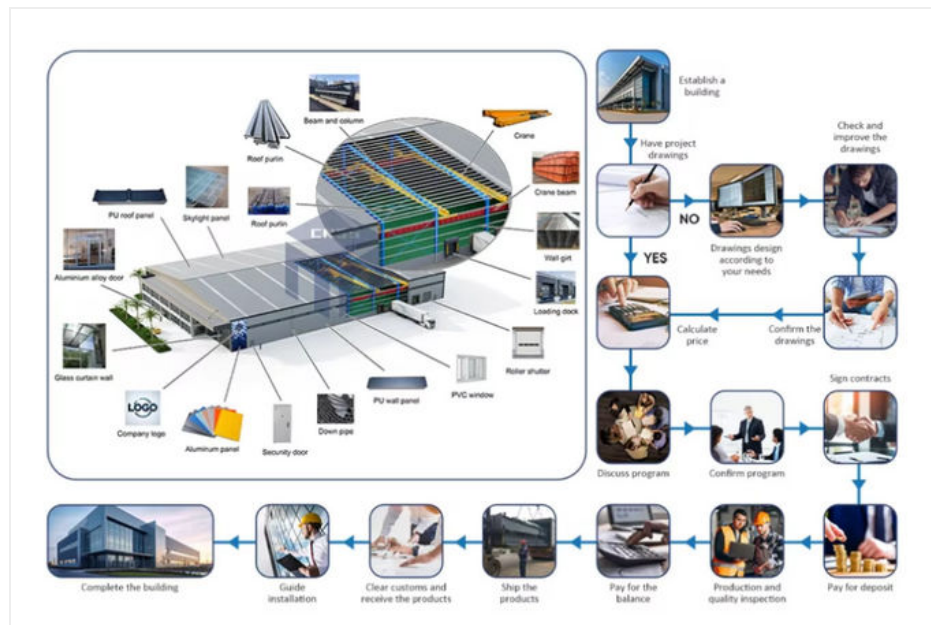
When considering the diverse applications of the BAODU Steel Warehouse product, one can envision a multitude of occasions and scenarios where this versatile structure can be utilized. The steel warehouse, workshop, hangar, hall, or any industrial steel structure is an ideal solution for various needs.

With a reasonable price point and the flexibility of discussing the minimum order quantity, this Steel Warehouse product offers cost-effective solutions for businesses and individuals alike. The packaging details are tailored to ensure the safe delivery of the components, with options for custom packaging based on client requirements.

The main frame of the Steel Warehouse consists of Welded H Steel Beams and Steel Trusses, providing robust support and stability. The surface treatment options of Hot Dip Galvanised or Painted enhance the longevity and aesthetics of the structure.

Its steel structure frame welded construction and easy installation process make the Steel Warehouse a practical choice for various applications. Whether used as a workshop, industrial steel structure, gable frame steel structure, or for other purposes, this product offers a reliable and durable solution.

## Customization



Free design and architectural drawings provided

Durability, easy maintenance, designed life span for 50 years

Fast and easy assemble, online installation guidance provided

Elaborate and strong design, high wind resistance performance

Thermal and noise insulation, water proof and fire prevention

## Support and Services







## Packing and Shipping







#### **Product Packaging:**

The Prefab Steel Warehouse is carefully packaged to ensure safe transportation and delivery. Each component is securely wrapped and placed in durable containers to prevent damage during shipping.

#### **Shipping Information:**

We offer reliable shipping services for the Prefab Steel Warehouse product. Our team works with trusted carriers to ensure timely delivery to your desired location. Please provide accurate shipping details to expedite the process.

### **FAQ**

#### **1. What's the quality grade of the steel structure components?**

Reply: Q355 is used for main steel structure, Q235 is used for secondary steel structure.

#### **2. How about the delivery time?**

Reply: Usually, about 30 days after the order confirmed, also depends on the fabrication quantity.

#### **3. How about the derust grade?**

Reply: Ball blasting Sa 2.5 on main steel structure, manual derust St2.0 on secondary steel structure.

#### **4. What kind panel used for the roof and wall?**

Reply: Color corrugated steel sheet and sandwich panel could be used. Sandwich panel performs well on the heat insulation, sound insulation. Common sandwich materials are EPS, glass wool and PU.

#### **5. How to install it?**

Reply: We will furnish you the detailed construction drawing and the construction manual which could help you to erect and install the building step by step. We also could send the engineer to your local to help you if needed.

