



40*60 Steel Building Metal Building Kits Steel Structure Warehouse Factory Price Warehouse

Our Product Introduction

Basic Information

- Place of Origin: Hebei, China
- Brand Name: BAODU
- Certification: ISO9001, CE
- Model Number: Steel Warehouse
- Minimum Order Quantity: 300 square meters
- Price: \$30-45 square meter
- Packaging Details: In general, for steel structure, we use the steel frame packing to keep goods not to be broken. For sandwich panel and color steel sheet, we use the plastic packing. If the clients need special packing will according to their requirements.
- Delivery Time: 30 days
- Payment Terms: L/C, D/A, D/P, T/T, Western Union, MoneyGram
- Supply Ability: 100000 Square Meter/Square Meters per Month



Product Specification

- Product Name: 40*60 Steel Building Metal Building Kits Steel Structure Warehouse Factory Price Warehouse
- Warranty: 50 -100 Year
- Main Frame: Welded H Steel Beam, Steel Truss
- Processing Service: Bending, Welding, Decoiling, Cutting, Punching
- Frame: Weld Steel Structure Frame
- Installation Guide: Installation Drawings And Video
- Roof Cladding: Steel Color Sheet, Sandwich Panel Glass Wool And Mesh
- Design: SAP2000/AutoCAD /PKPM /3D3S/TEKLA
- Corrosion Protection: Hot-Dip Galvanizing
- Wind Resistance: Up To 180km/h
- Highlight: **40x60 steel building kit, prefab metal warehouse structure, factory price steel warehouse kit**

Product Description

40×60 Steel Building Metal Building Kits

Factory Price Warehouse Steel Structure

Product Specifications

Attribute	Value
Product Name	40×60 Steel Building Metal Building Kits Steel Structure Warehouse
Warranty	50-100 Year
Main frame	Welded H Steel Beam, Steel Truss
Processing Service	Bending, Welding, Decoiling, Cutting, Punching
Frame	Weld steel structure frame
Installation Guide	Installation drawings and video
Roof Cladding	Steel color sheet, sandwich panel glass wool and mesh
Design	SAP2000/AutoCAD /PKPM /3D3S/TEKLA
Corrosion Protection	Hot-Dip Galvanizing
Wind Resistance	Up to 180km/h

Product Overview

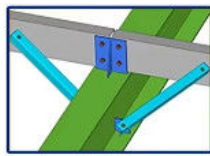
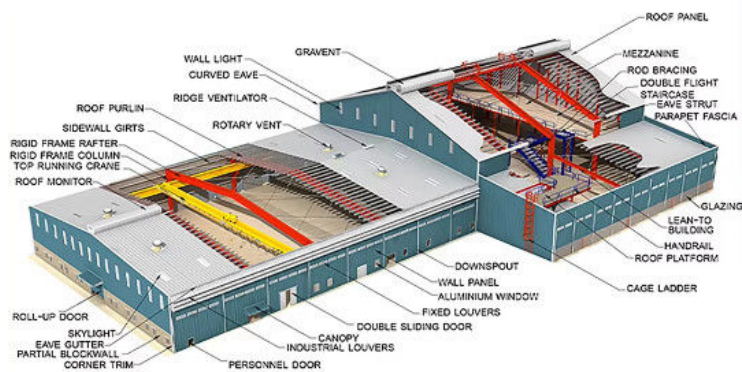


We are a trusted global partner for high-quality steel structure manufacturing and export, delivering innovative and cost-efficient building solutions worldwide. Our expertise lies in providing fully customized, code-compliant designs that optimize space and functionality for manufacturing plants, warehouses, aircraft hangars, and commercial complexes.

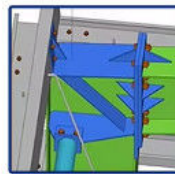
Utilizing state-of-the-art technology and superior materials, we ensure every component offers exceptional strength, durability, and resistance to harsh environmental conditions. Our integrated service covers everything from detailed engineering and precision manufacturing to secure packaging and seamless logistics, guaranteeing timely delivery and straightforward assembly.

[Please Click here to find more information](#)

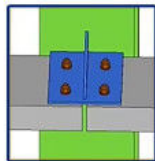
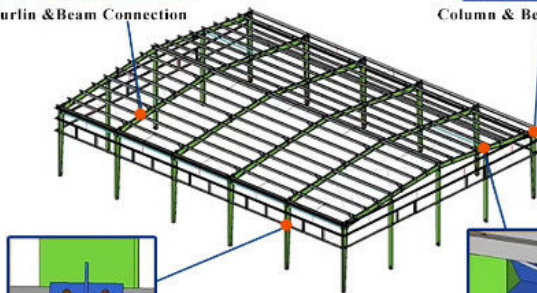
Technical Parameters



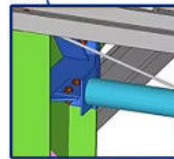
Purlin & Beam Connection



Column & Beam Connection



Purlin & Column Connection



Tie & Column Connection

Please provide the following information for a customized quote:

- Project Progress: Is Land Purchased? Is it licensed by the government?
- Usage: for warehouse, workshop, showroom, etc.
- Location: In which country will it be built?
- Local Climate: Wind speed, Snow load (max. Wind speed)
- Design: Please provide the design drawing or need us to design for you
- Dimension: Length×width×height
- Crane Beam: Do you need crane beam inside the steel structure?
- Roof and Wall: determine the panel material
- Windows and Doors: material, quantity, and type

Components Breakdown

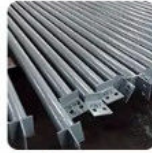
Products materials



Embedded bolts
for foundation



Structure frame
for columns or
beams



Bracing material



Connected plate



Purlin



Cladding material
1-steel sheet



Cladding material
2- EPS panel



Cladding material
3-glass wool panel



Cladding material
4-rock wool panel



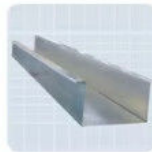
Door option
1-sliding door



Cladding material
2-rolling door



Aluminum window



Water gutter



Water pipe



Sealing materi



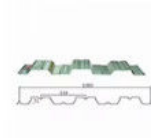
Ventilation
equipment on roof



FRP panel for
lighting



Bolts



Steel decking



Stair (if needed)

Structure	Part	Specification	
Main Structure	Frame Column and Beam	Q355B H/I Section & As drawings	
	Welding	Automatic Submerged Arc Welding	
	Rust Removing	Shot Blasting	
	Surface Processing	Coating or Galvanized	
	High Strength Bolt	Grade 10.9	
Secondary Structure	Purlin	C/Z Purlin Size from C120-C320,Z100~Z300	
	Angle Brace	Q235B L-Steel	
	Cross Brace/X Brace	Q235B Round Pipe	
	Tie Bar	Q235B Round Bar	
Roof System	Roofing Material	Sandwich Panel-Insulated PU/Glasswool/Rock Wool/EPS 50mm-200mm	
	Skylight Panel	1.2mm FRP	
	Gutter	Steel Gutter Galvanized/Coated 2.0mm-3.0mm	
	Rainspout/Down Pipe	PVC Pipe	
	Wall System	Wall Material	Sandwich Panel-Insulated PU/Glasswool/Rock Wool/EPS 50mm-200mm

Project Gallery





Our steel structures serve diverse purposes including warehouses, workshops, factories, cold storage, high-rise buildings, shopping malls, power plants, distribution centers, pedestrian bridges, hotels, schools, sports arenas, parking centers, airplane hangars, agricultural buildings, and more.

Quality Assurance



Excellent product quality is our eternal pursuit. We implement whole-process quality management, strictly supervising every process from raw material supply to installation. Our professional quality inspection team uses advanced equipment including German GS1000 vacuum spectrometer and high-frequency infrared carbon sulfur analyzer.

We support testing and certification by SGS, TUV, BV and have won many awards from China's advanced quality management units.

Production Capacity

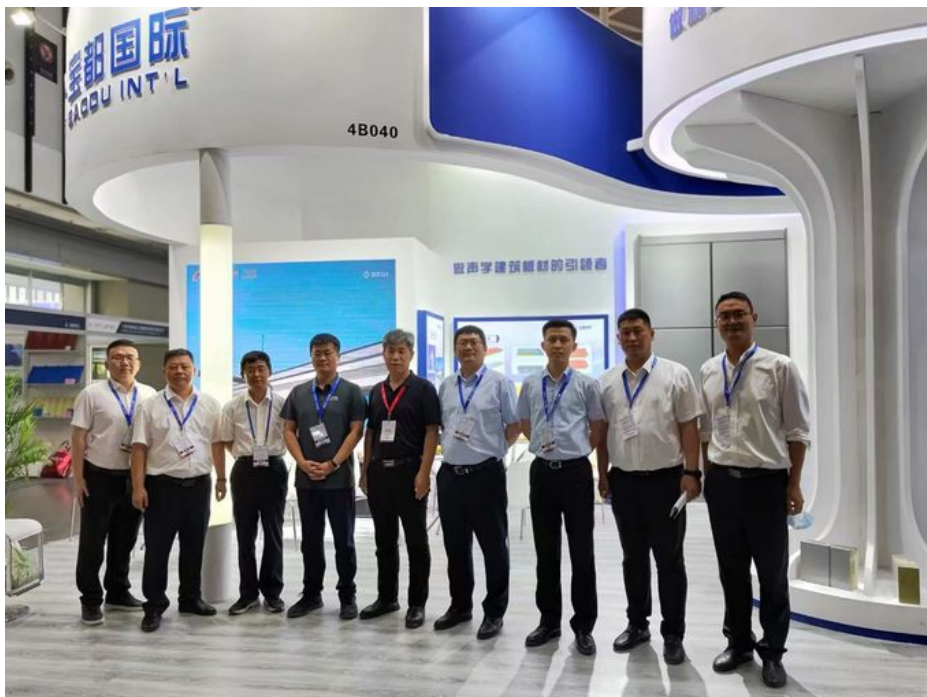


Certifications

OUR CERTIFICATE



Why Choose Our Steel Structures?



- **Large-Span, Column-Free Interiors:** Eliminates obstructive columns for flexible layouts
- **High-Strength Steel Framework:** Q355/Q235 steel ensures superior load-bearing capacity
- **Fast Construction & Cost Efficiency:** 40%-60% faster installation than concrete buildings

- **Energy-Efficient & Climate-Resilient:** Integrated ventilation and climate control systems
- **Customizable Solutions:** Designed for expansion with mezzanines, crane beams, etc.

Company Profile

Established in 2010 with offices in Beijing and factory in Hebei, Baodu International is a designer, manufacturer, and exporter of steel structures, sandwich panels, and prefab houses. With annual production capacity of 100,000 tons of steel structures and 6 million square meters of panels, our products serve over 30 countries.

Our professional team includes 5 senior engineers, 20 engineers, and 35 technicians. We hold CE certification, GOST certification, and have participated in major projects including Beijing Daxing International Airport and overseas power plants in Pakistan and Dubai.

Packaging & Shipping



Packaging Details:

- Steel components with proper protection
- Sandwich panels covered with plastic film
- Accessories loaded into wooden boxes
- All products packed for ocean transport in 40'HQ containers

Frequently Asked Questions

What kind of customer service do you provide?

We offer comprehensive service including design, facilities procurement, and installation guidance.

How about customer reviews?

We consistently receive high five-star reviews for our quality and service.

What is your quality inspection process?

Every product undergoes strict inspection from raw materials to finished goods.

Can you send installation engineers?

We provide detailed installation drawings and can send engineers or teams upon request.

Do you accept container loading inspection?

Inspectors are welcome during production or loading.

Do you offer design services?

Yes, we design complete solutions using AutoCAD, PKPM, Tekla Structures, etc.

What is the delivery time?

Typically 40 days to nearest Chinese seaport after deposit.

What certifications do you have?

We hold ISO9000, CE, and SGS certifications.



Baodu International Advanced Construction Material Co., Ltd.



+86 13717927965



chunlei.song@baodu.com



baodupanel.com

No. 2, Yijin North Street, Daxing District, Beijing