



Steel Structure Ready-To-Assemble Prefabricated Industrial Building Steel Structure Workshop for Sale

Our Product Introduction

Basic Information

- Place of Origin: Hebei, China
- Brand Name: BAODU
- Certification: ISO9001, CE
- Model Number: Steel Warehouse
- Minimum Order Quantity: Discussible
- Price: Reasonable
- Packaging Details: In general, for steel structure, we use the steel frame packing to keep goods not to be broken. For sandwich panel and color steel sheet, we use the plastic packing. If the clients need special packing will according to their requirements.
- Delivery Time: 21 days
- Payment Terms: L/C, D/A, D/P, T/T, Western Union, MoneyGram
- Supply Ability: 10000 Square Meter/Square Meters per Month

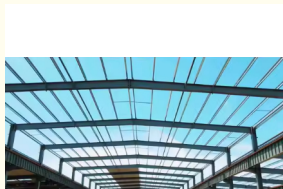
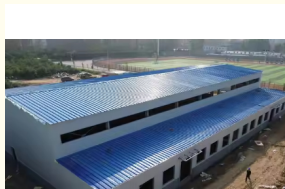


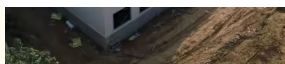
Product Specification

- Product Name: Steel Structure Ready-To-Assemble Prefabricated Industrial Building Steel Structure Workshop For Sale
- Structure: Steel Structure Frame Welded
- Keyword: Steel Structure Building Warehouse
- Structure Type: Long-span Grid Structure
- Usage: Workshop Warehouse Construction Office
- Drawing Design: SAP2000/AutoCAD /PKPM /3D3S/TEKLA
- Surface Treatment: Paint Spraying
- Design Style: Modern Style
- Wall & Roof: Sandwich Panel; Color Steel Sheet
- Secondary Structure: Purlin; Brace; Knee Brace Etc



More Images





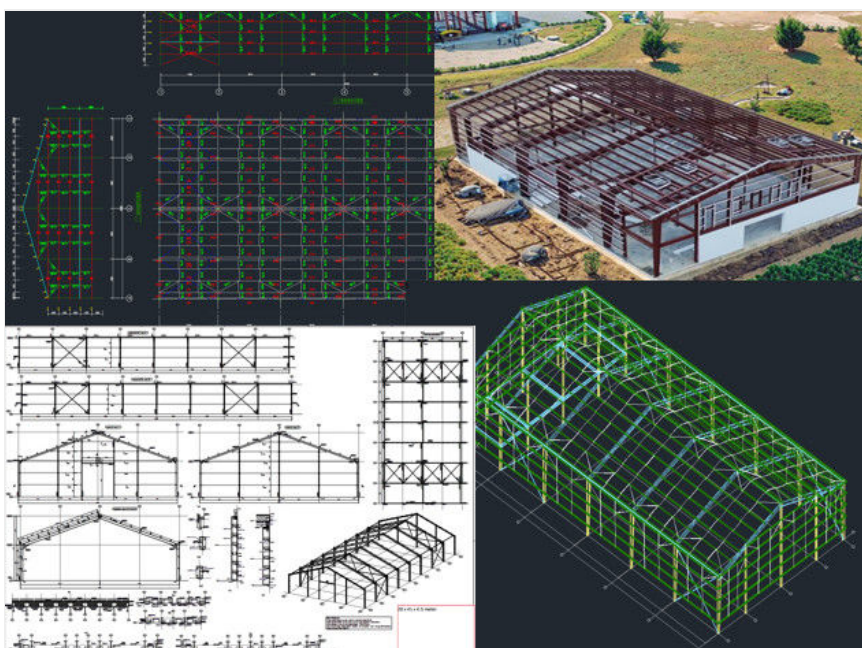
Product Description

Steel Structure Ready-To-Assemble Prefabricated Industrial Building Steel Structure Workshop for Sale

Product Attributes

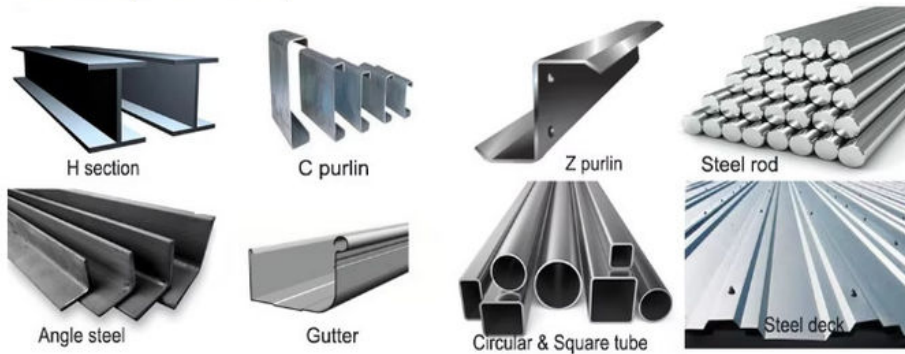
Different Sizes	Width X Length X Eave height.
Different Types	Single slope,double slope, Single span,double-span,Multi-span Single floors, Double floors.
Material	Material Q345(S355JR) or Q235(S235JR) steel, all bolt connections. Straight cross-section or Variable cross-section.
Different Purlins	C or Z type: Size from C120~C320, Z100~Z200
Different roof /wall panel	Single colorfull corrugated steel sheet or sandwich panel with EPS, ROCK WOOL, PU etc.
All Accessories	Semi-transparent skylight belts, Ventilators, down pipe, Galvanized gutter, etc
Surface	Two layers of Anti-rust Paint!

Technical Parameters



Design parameters	
Design Parameters	1) Live load on roof (KN/M2)
	2) Wind speed (KM/H)
	3) Snow load (KG/M2) - If Applicable
	4) Earthquake load - If Applicable
	5) Style of Doors and Windows
	6) Crane (if you have), Crane span, Crane lift height, max lift capacity, max wheel pressure and min wheel pressure
	7) Size: width X length X eave height, roof slope
	8) Or your idea!

Main frame(column& beam)



Auxiliary system (wall& roof material)



Support and Services





Our Prefab Steel Warehouse product comes with comprehensive product technical support and services to ensure that your project is successful. Our team of experts is available to assist you with any technical queries or issues that may arise. We offer installation guidance, maintenance advice, and troubleshooting support to help you make the most of your Prefab Steel Warehouse. Additionally, our customer service team is dedicated to providing excellent support and ensuring your satisfaction with our product.

Packing and Shipping



Product Packaging: The Prefab Steel Warehouse is carefully packaged to ensure its components are protected during transportation.

Each part is securely wrapped and placed in sturdy boxes or crates to prevent damage. Additionally, clear labeling is applied to each package for easy identification of the contents.

Shipping: Once the Prefab Steel Warehouse is ready for shipment, it will be loaded onto a secure transport vehicle. We work with reliable shipping partners to ensure timely delivery to your specified location. You will be provided with tracking information so you can monitor the progress of your shipment.

Frequently Asked Questions

1. What kind of customer service do you provide?

We offer comprehensive customer service, including basic design, supporting facilities procurement, and the option to dispatch installation guidance.

2. How about the customer reviews of your company?

We are proud to have received consistently high five-star reviews from our customers, which stand as a testament to our commitment to quality and service.

3. What is your quality inspection process like?

Our strict quality inspection process ensures that every product meets the highest standards of excellence. From raw materials to finished goods, each stage is meticulously inspected to guarantee superior quality.

4. Can you send engineers or a whole team to install my project?

We will give detailed installation drawings for free. We can send engineers as an installation director or a team upon request.

5. Do you accept container loading inspection?

You are welcomed to send an inspector, not only for the container loading, but any time during the production time.

6. Do you offer designing service for us?

Yes, we could design full solution drawings as your requirements. By using AutoCAD, PKPM, MTS, 3D3S, Tarch, Tekla Structures (Xsteel) and etc. we can design complex industrial buildings like office mansions, super markets, auto dealer shops, shipping malls, 5-star hotels.

7. What is the delivery time?

Delivery time depends on order quantities. In general, the delivery time to the nearest seaport in China will be 40 days after receiving the deposit.

8. How can I get a quotation for my projects?

You can contact us by email, phone, Alibaba Trade manager and so on 24*7 and you will get a reply within 8 hours.

9. What certifications has your company passed?

Our company has passed professional certifications such as IOS9000, CE, and SGS, ensuring that our products and services meet international standards.



Baodu International Advanced Construction Material Co., Ltd.



+86 13717927965



chunlei.song@baodu.com



baodupanel.com

No. 2, Yijin North Street, Daxing District, Beijing