

Prefab Steel Warehouse Building Long-Span Grid Structure Workshop

Our Product Introduction

Basic Information

- Place of Origin: Hebei, China
- Brand Name: BAODU
- Certification: ISO9001, CE
- Model Number: Steel Warehouse
- Minimum Order Quantity: Discussible
- Price: Reasonable
- Packaging Details: In general, for steel structure, we use the steel frame packing to keep goods not to be broken. For sandwich panel and color steel sheet, we use the plastic packing. If the clients need special packing will according to their requirements.
- Delivery Time: 21 days
- Payment Terms: L/C, D/A, D/P, T/T, Western Union, MoneyGram
- Supply Ability: 10000 Square Meter/Square Meters per Month

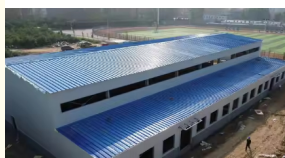


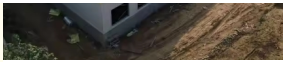
Product Specification

- Product Name: Steel Structure Ready-To-Assemble Prefabricated Industrial Building Steel Structure Workshop For Sale
- Structure: Steel Structure Frame Welded
- Keyword: Steel Structure Building Warehouse
- Structure Type: Long-span Grid Structure
- Usage: Workshop Warehouse Construction Office
- Drawing Design: SAP2000/AutoCAD /PKPM /3D3S/TEKLA
- Surface Treatment: Paint Spraying
- Design Style: Modern Style
- Wall & Roof: Sandwich Panel; Color Steel Sheet
- Secondary Structure: Purlin; Brace; Knee Brace Etc
- Highlight: **prefab steel warehouse building, long-span grid structure workshop, steel warehouse with warranty**



More Images





Product Description

Steel Structure Ready-To-Assemble Prefabricated Industrial Building

Product Specifications

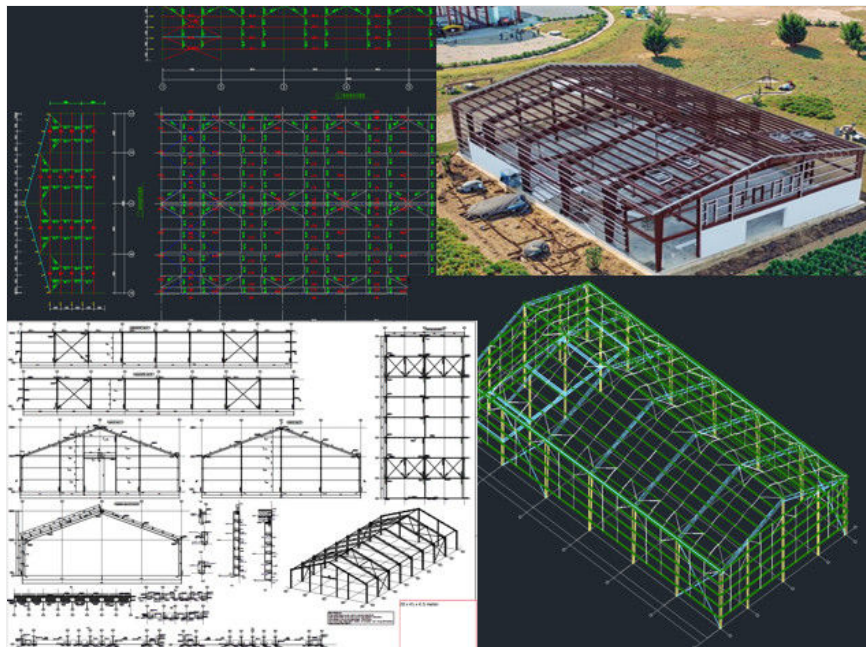
Attribute	Value
Structure	Steel Structure Frame Welded
Structure Type	Long-span Grid Structure
Usage	Workshop, Warehouse, Construction Office
Drawing Design	SAP2000/AutoCAD /PKPM /3D3S/TEKLA
Surface Treatment	Paint Spraying
Wall & Roof	Sandwich panel; color steel sheet
Secondary Structure	Purlin; Brace; Knee Brace etc

Configuration Options

Feature	Options
Sizes	Custom Width × Length × Eave height
Types	Single slope, double slope, Single span, double-span, Multi-span
Material	Q345(S355JR) or Q235(S235JR) steel, all bolt connections
Purlins	C or Z type: Size from C120~C320, Z100~Z200
Roof/Wall Panel	Colorful corrugated steel sheet or sandwich panel with EPS, ROCK WOOL, PU
Accessories	Semi-transparent skylight belts, Ventilators, down pipe, Galvanized gutter

Technical Parameters





Design Parameter	Considerations
Live load on roof	KN/M ²
Wind speed	KM/H
Snow load	KG/M ² (If Applicable)
Earthquake load	If Applicable
Doors and Windows	Customizable styles
Crane Specifications	If required: span, lift height, capacity, wheel pressure

Support and Services





Our prefabricated steel structures come with comprehensive technical support and services to ensure project success. Our expert team provides:

- Installation guidance and detailed drawings
- Maintenance advice and troubleshooting support
- Dedicated customer service for complete satisfaction
- Technical consultation throughout your project

Packing and Shipping





All components are carefully packaged for secure transportation:

- Sturdy wrapping and crating for damage prevention
- Clear labeling for easy identification
- Reliable shipping partners for timely delivery
- Tracking information provided for all shipments

Frequently Asked Questions

What kind of customer service do you provide?

We offer comprehensive support including basic design, facilities procurement assistance, and installation guidance.

What is your quality inspection process?

Our strict quality control covers all stages from raw materials to finished products, ensuring superior quality standards.

Can you provide installation support?

We provide detailed installation drawings and can send engineers or a complete installation team upon request.

Do you offer design services?

Yes, we create complete solution drawings using professional software like AutoCAD, Tekla Structures, and others.

What certifications does your company hold?

We maintain ISO9000, CE, and SGS certifications, ensuring international quality standards.



Baodu International Advanced Construction Material Co., Ltd.



+86 13717927965



chunlei.song@baodu.com



baodupanel.com

No. 2, Yijin North Street, Daxing District, Beijing