

Fast Assembly Modern Prefab Steel Warehouse Buildings Eco Friendly

Our Product Introduction

for more products please visit us on baodupanel.com

Basic Information

- Place of Origin: Hebei, China
- Brand Name: BAODU
- Certification: ISO9001, CE
- Model Number: Steel Warehouse
- Minimum Order Quantity: 300 square meters
- Price: \$30-45 square meter
- Packaging Details: In general, for steel structure, we use the steel frame packing to keep goods not to be broken. For sandwich panel and color steel sheet, we use the plastic packing. If the clients need special packing will according to their requirements.
- Delivery Time: 30 days
- Payment Terms: L/C, D/A, D/P, T/T, Western Union, MoneyGram
- Supply Ability: 100000 Square Meter/Square Meters per Month



Product Specification

- Product Name: Professional Manufactured Steel Structure Storage Fast Assembly Modern Design Prefab Metal Warehouse Structural Steel Prefabricated Construction Workshop Building Hangar Steel Structure Warehouse
- Secondary Structure: Purlin; Brace; Knee Brace Etc
- Environmental Impact: Eco-friendly
- Installation: Easy
- Purlin: C/Z Galvanized Steel
- Foundation: Bolt-Connected Precast Concrete Base
- Surface: Paint Coating/hot-dip Galvanizing
- Lifespan: More Than 50 Years
- Fire Resistance: High
- Highlight: **Fast Assembly Modern Prefab Warehouse,**

Product Description

Professional Manufactured Steel Structure Storage Fast Assembly Modern Design Prefab Metal Warehouse Structural Steel Prefabricated Construction Workshop Building Hangar Steel Structure Warehouse

Features:



Specifications	
Type	Single or double or Multi slope; Single or double or Multi-span; Single or Multi-floor;
Base	steel foundation bolts
Steel frame	Material Q345(S355JR)(Gr50)or Q235(S235JR) steel;
Bracing	X-type or V-type or other type bracing made from angle, round bar, etc
Wall & Roof Purlin	C section channel or Z section channel
Roof & wall cladding	Single color corrugated steel sheet;Sandwich panel with eps,rock wool,glasswool
Window	UPVC/PVC or Aluminum Alloy window frame with glass.
Door	Sliding or Roller shutter door.
Gutter material	Color steel sheet or galvanized steel or stainless steel;
Rainspout	PVC pipe
Connection	high strength bolts ,intensive bolt,self-drilling screws.
Accessories	Skylight panel, Ventilation, Fasteners etc
Surface process	Shot blasting Sa2.5;Two layers of Anti-rust Painting or galvanized

Technical Parameters:

STEEL STRUCTURE DESIGNING

With help of modern designing softwares such as AutoCAD, PKPM, 3D3S, SAP2000, TSSD, Tekla Structures (Xsteel), 3DS MAX we provide full designing and detailing service to all customers.



Basic Building Parameters We Take into Consideration

Building Width:

No matter what primary framing system is used, the building width is defined as the distance from outside of eave strut of one sidewall. Building width does not include the width of Lean-To buildings or roof extensions.

Building Length:

The longitudinal length of the building measured from out to out of end wall steel lines

Building Height:

Building height is the eave height which usually is the distance from the bottom of the main frame column base plate to the top outer point of the eave strut. When columns are recessed or elevated from finished floor, eave height is the distance from finished floor level to top of eave strut.

Roof Slope (x/10):

This is the angle of the roof with respect to the horizontal. The most common roof slopes are 0.5/10 and 1/10. Any practical roof slope is possible.

End Bay Length:

The distance from outside of the outer flange of end wall columns to center line of the first interior frame column.

Interior Bay Length:

The distance between the center lines of two adjacent interior main frame columns. The most common bay lengths are 6m, 7.5m and 9m.

Design loads:

Design for snow loads, earth quake loads, collateral loads, crane loads or any other loading condition, if required must be specified at the time of request for quotation.

Could you tell me your requirement for your steel structure project?

Basic design requirements and design Load,

1. Project site location;
2. Overall dimension (length*width*eave height in meters);
3. Mezzanine or not? How many kgs of load per square meter on mezzanine?;
4. Single-layer steel sheet wall or sandwich panel wall;
5. Snow load if applicable;
6. Wind speed/load;
7. Interior column allowed or not;
8. Overhead crane needed or not, capacity?;
9. Any other particular requirements?

Components:



C Type Steel



Z Type Steel



H Type Steel



C Type Purlin



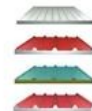
Z Type Purlin



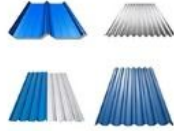
Un-powered Ventilator



Rainwater Pipe



EPS Sandwich Panel



Roof and Wall Panels



Square Tube



Tube



Steel Decking Floor



Steel Gutter



High Strength Bolt



Self-tapping Screw

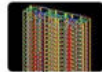


Sliding Window

what you do?



Message



Design

what we do?



Produce



Quotation



Shipping



Installation

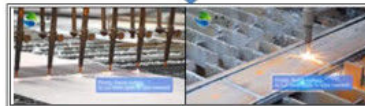
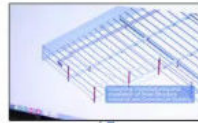
what you get?



Finish

Production Process

Step 1 Design



Step 2 Flame cutting



Step 5



Step 4 Submerged-arc welding



Step 3 Point welding



Step 6 Manual welding



Step 7 Make the surface



Project Cases:









Advantages of steel structure buildings
1.The components of the steel structure have small section, light weight, easy to transport and installation, suitable for large span, high height, heavy bearing structure.
2.Suitable for withstand impact and dynamic load, with good seismic performance.The internal structure of steel is uniform with high reliability.
3.Factory mechanized production of steel structure components finished products of high precision, high production efficiency,site assembly speed, short construction period.
Our prefabricated steel structure buildings are pre-cut, pre-drilled, and ready for quick and efficient assembly. Steel buildings work for virtually any building application:Agricultural/ Barns/ Aircraft Hangars/ Welding Shops/Commercial center/Garages/Storage/ Suburban Buildings/ Warehouses/ Workshops/school/wedding hall/dormitory etc.

Strict Quality Inspection Standards

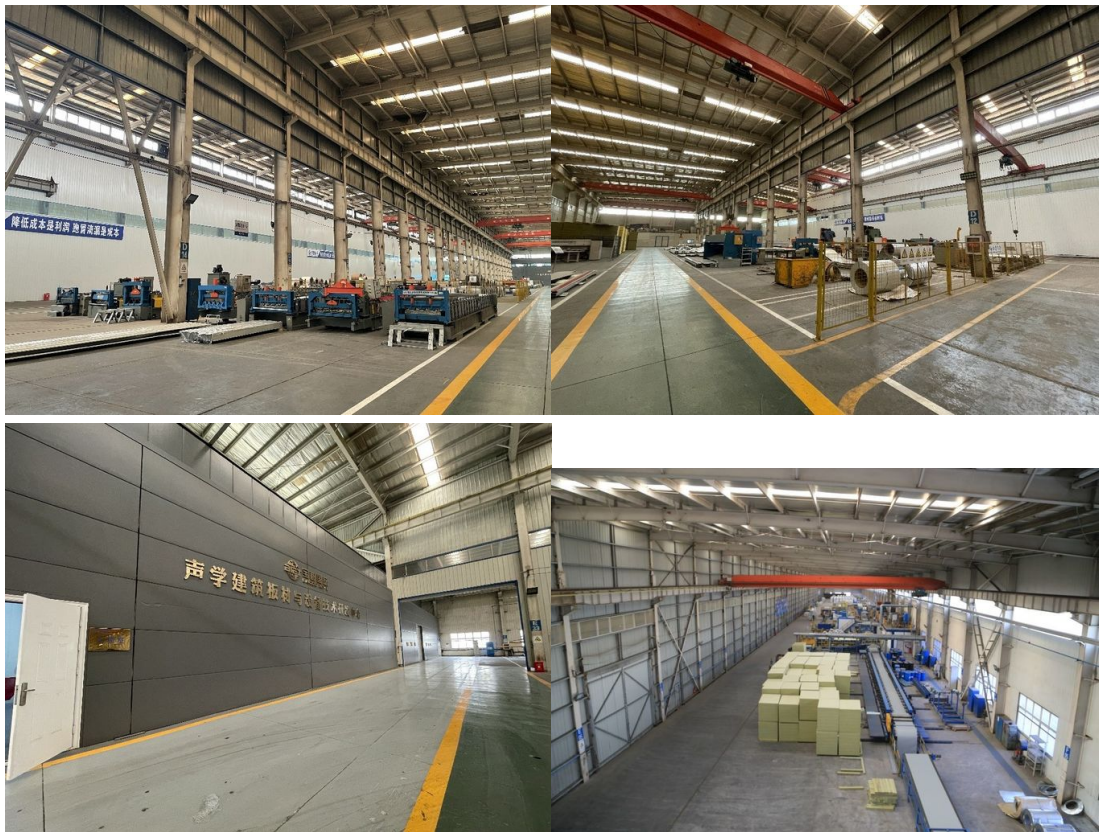


Excellent product quality is our eternal pursuit, and it is also the fundamental reason for us to base ourselves on the global market. BAODU GROUP implements whole-process quality management and strictly supervises every process such as raw material supply, engineering design, steel component manufacturing, installation and construction.

We have established a professional team of quality inspection engineers, introduced internationally leading quality inspection equipment such as German GS1000 vacuum spectrometer and high-frequency infrared carbon sulfur analyzer, established a high-quality product inspection room, and won many awards from China's advanced quality management unit.

In addition, we support testing and certification by SGS, TUV, BV.

Our capacity and certification:



OUR CERTIFICATE



Support and Services:



Why Choose Our Steel Structure Factory Buildings?

Our industrial steel structures are engineered for maximum efficiency, cost-effectiveness, and long-term durability.

1. Large-Span, Column-Free Interiors

- Eliminates obstructive columns, allowing flexible production layouts.

2. High-Strength Steel Framework

- Built with Q355/Q235 high-strength steel, ensuring superior load-bearing capacity.

3. Fast Construction & Cost Efficiency

- Prefabricated components reduce installation time by 40%-60% compared to concrete buildings.

4. Energy-Efficient & Climate-Resilient

- Integrated ventilation, skylights, and air circulation systems ensure a comfortable work environment.

5. Customizable & Scalable Solutions

- Designed for multi-story expansion, incorporating mezzanines, crane beams, and fire-resistant materials.

Company profile:

Baodu International Advanced Construction Material Co., Ltd was established in January 2010 with the office in Beijing and factory in Hebei, China. Baodu is a designer, manufacturer, supplier and exporter of industrial noise comprehensive treatment, steel structure, sandwich panel and prefab house. Baodu has an annual output of 6 million square meters of acoustic sandwich panels, 100000 tons of steel structures and 1 million square meters of floor decking sheet. The products are sold in more than 30 countries and regions around the world. Baodu has a professional design team with more than 10 years' experience, including 5 senior engineers, 20 engineers, and 35 technicians. Baodu has several energy saving and environment protection intellectual property rights, construction and environment protection design qualification, CE certification and Russian GOST certification etc. Baodu participated in the military parade village project for the 60th anniversary of China and project of Beijing Daxing International Airport. Under the guidance of China's "one belt, one road" strategy, Baodu has also undertaken overseas projects such as the project of Thar, Pakistan coal fired power plant, Hasyan Dubai power plant and so on. Finally, welcome your coming to Baodu for a visit and cooperation!

Packing and Shipping:



Packaging Details :

1.Steel structure components will be in packaging with proper protection.

2.Sandwich panels will be covered with plastic film.

3.Bolts and other accessories will be loaded into wooden Boxes

All the structure components, panels, bolts and sorts of accessories will be well packed with standard package suitable for ocean transport and loaded into 40'HQ.

All the products are loaded at the loading site of our factory using crane and forklift by our skilled workers, who will prevent the goods to be damaged.

Good relationship with many vessel companies to make sure the transportation smooth

FAQ:

Q1: Can I have a visit to your factory before the order?

A: Why not? Welcome to visit our factory. You can fly to Beijing daxing Airport, then we will pick you up at the airport, hotel booking service is available.

Q2:Is your price competitive compared with other companies?

A:Our business objectives are to give the best price with same quality and best quality with the same price. We will do everything we can to reduce your cost and guarantee you get the best product that you paid for.

Q3:Do you accept container loading inspection?

A:You are welcomed to send an inspector, not only for the container loading, but any time during the production time.

Q4:Do you offer designing service for us?

A:Yes, we could design full solution drawings as your requirements.By using AutoCAD ,PKPM ,3D3S,Tekla Structures (X steel) etc., we can design complex industrial building like office mansion, super marker, auto dealer shop,shipping mall, 5 stars hotel.

Q5:What is the delivery time?

A:Delivery time depends on order quantities. In general, the delivery time to nearest seaport in China will be 30 days after receiving deposit.

Q6:How can you get a quotation for your projects?

A:You can contact us by email, phone, Alibaba TM, WhatsApp and so on 24*7 and you will get reply within 8 hours. Firstly, please send us your project details and your requirements. Then we will design accordingly, free of charge. Afterwards, please check and confirm whether you like the drawings. If not, we shall get the drawings revised until your confirmation.



Baodu International Advanced Construction Material Co., Ltd.



+86 13717927965



chunlei.song@baodu.com



baodupanel.com

Room 1101, Building 6, Yard 9, Hongye Road, Daxing District, Beijing