

## Easy Installation Industrial Prefabricated Warehouse Building For Garage

### Our Product Introduction

for more products please visit us on [baodupanel.com](http://baodupanel.com)

#### Basic Information

- Place of Origin: Hebei, China
- Brand Name: BAODU
- Certification: ISO9001, CE
- Model Number: Steel Warehouse
- Minimum Order Quantity: 300square meters
- Price: \$30-45square meter
- Packaging Details: In general, for steel structure , we use the steel frame packing to keep goods not to be broken . For sandwich panel and color steel sheet, we use the plastic packing . If the clients need special packing will according to their requirements.
- Delivery Time: 30days
- Payment Terms: L/C, D/A, D/P, T/T, Western Union, MoneyGram
- Supply Ability: 100000 Square Meter/Square Meters per Month



#### Product Specification

- Product Name: Low Cost Prefab Warehouse Steel Structure  
Workshop Industrial Steel Structure  
Warehouse Factory Steel Fabrication  
Workshop Prefabricated Steel Steel  
Structure Warehouse For Garage
- Wind Load Resistance: Up To 60m/s
- Roof\_Type: Single Slope/Double Slope
- Beam: Welded/ Hot Rolled H Beam
- Door\_Type: Sliding Door/Rolling Door
- Column Height: 6m-12m Adjustable
- Structure: Portal Frame
- Surface\_Treatment: Hot-dip Galvanized/Painted
- Keyword: Warehouse
- Secondary Structure: Purlin; Brace; Knee Brace Etc

## Product Description

### Low Cost Prefab Warehouse Steel Structure Workshop Industrial Steel Structure Warehouse Factory Steel Fabrication Workshop Prefabricated Steel Steel Structure Warehouse for Garage

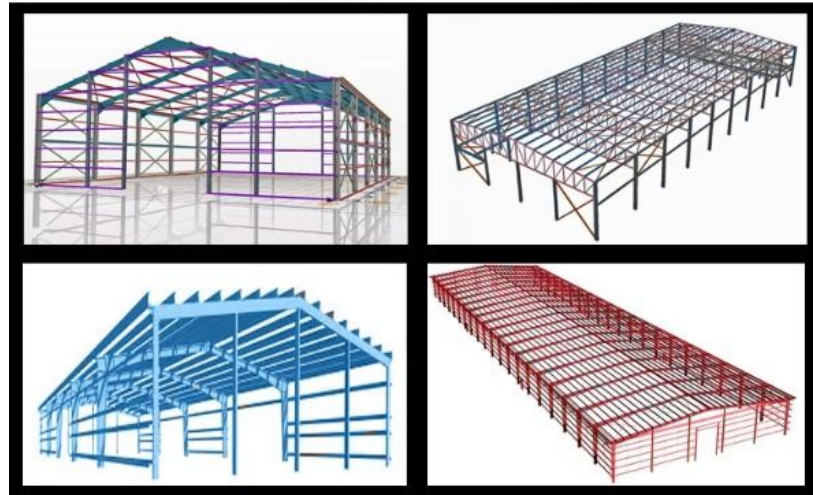
#### Features:



Commercial buildings	Office buildings, shopping centers, hotels, and other commercial structures often use steel structures due to the need for large spans and heights.
Industry buildings	Factories, manufacturing plants, and processing facilities typically use steel structures to accommodate heavy machinery and equipment loads. For example: equipment installation plant, home appliance manufacturing plant, petroleum refining plant, natural gas processing plant, etc
Storage facilities	Warehouses and storage facilities typically utilize steel structures to support large quantities of goods and storage requirements. For example: logistics warehousing, finished product warehouse, raw material warehouse, cold storage, sorting center, etc
Residential buildings	Steel structures are also used in high-rise apartments, apartments, and residential buildings to achieve design flexibility and structural strength.
Bridge	Steel structures are an ideal choice for bridge construction because they have the strength required to span long distances while supporting vehicle and pedestrian loads.
Industrial facilities	Steel structures are commonly found in industrial facilities such as petrochemical plants, powerplants, and mining facilities, where they can accommodate heavy equipment and handle large amounts of materials.
Sports field and exhibition center	Large sports venues and exhibition centers typically use steel structures to create column free spaces that can accommodate a large number of spectators or exhibits.
Infrastructure	Steel structures are also used in infrastructure projects, including airport runways, docks, and pipeline bridges.

Marine engineering	Due to its corrosion resistance, steel is widely used in marine engineering applications, such as offshore platforms and bridges.
Temporary structure	In some cases, it is necessary to quickly construct temporary structures such as exhibition displaysconcert stages, and temporary shelters. Steel structures have also been widely used in theseapplications.

### Technical Parameters:



Basic Building Parameters We Take into Consideration

#### **Building Width:**

No matter what primary framing system is used, the building width is defined as the distance from outside of eave strut of one sidewall. Building width does not include the width of Lean-To buildings or roof extensions.

#### **Building Length:**

The longitudinal length of the building measured from out to out of end wall steel lines

#### **Building Height:**

Building height is the eave height which usually is the distance from the bottom of the main frame column base plate to the top outer point of the eave strut. When columns are recessed or elevated from finished floor, eave height is the distance from finished floor level to top of eave strut.

#### **Roof Slope (x/10):**

This is the angle of the roof with respect to the horizontal .The most common roof slopes are 0.5/10 and 1/10. Any practical roof slope is possible.

#### **End Bay Length:**

The distance from outside of the outer flange of end wall columns to center line of the first interior frame column.

#### **Interior Bay Length:**

The distance between the center lines of two adjacent interior main frame columns.The most common bay lengths are 6m,7.5m and 9m.

#### **Design loads:**

Design for snow loads,earth quake loads,collateral loads.crane loads or any other loading condition,if required must be specified at the time of request for quotation.

Could you tell me your requirement for your steel structure project?

Basic design requirements and design Load,

1. Project site location;
2. Overall dimension (length\*width\*eave height in meters);
3. Mezzanine or not? How many kgs of load per square meter on mezzanine?;
4. Single-layer steel sheet wall or sandwich panel wall;
5. Snow load if applicable;
6. Wind speed/load;
7. Interior column allowed or not;
8. Overhead crane needed or not, capacity?;
9. Any other particular requirements?

### Components:



Baodu Steel Structure is the professional manufacturer of Steel Structure Warehouse, Workshop, Pre-engineered building. Pre-engineered steel structure warehouse is steel structure built over a structural concept of primary members, secondary members, roof and wall sheeting connected to each other and various other building components. These buildings can be provided with different structural and non-structural additions such as skylights, wall lights, turbo vents, ridge ventilators, louvers, roof monitors, doors & windows, trusses, mezzanine floors, fascias, canopies, crane systems, insulation etc., based on the customer's requirements.

#### Roof and wall project system

The roof and wall system plays a vital role in protecting your structure from environmental factors like wind, rain, and temperature fluctuations. With advanced insulation and weatherproofing, our systems ensure durability and energy efficiency.

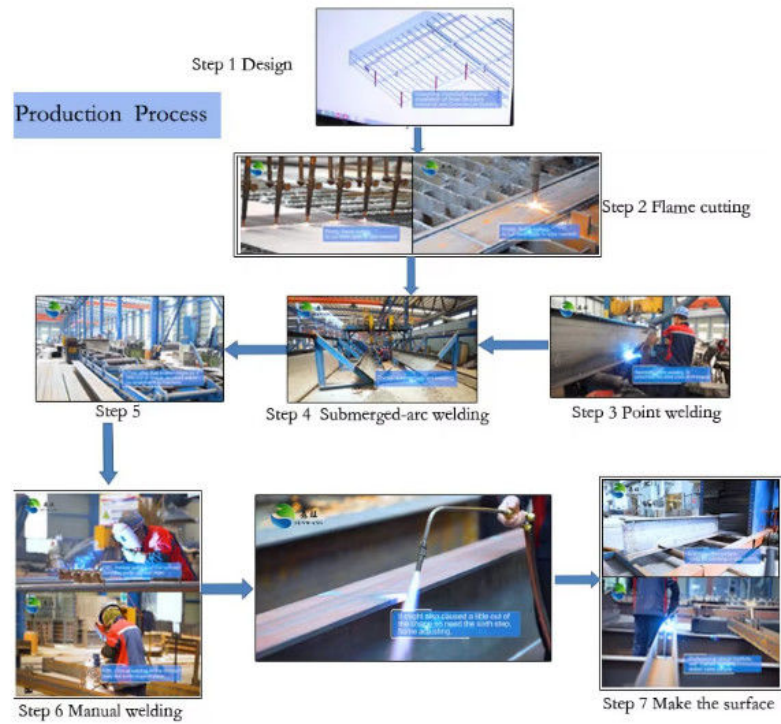
#### Main Steel Frame

At the core of every steel structure is the main steel frame, which provides the strength and stability necessary to support the entire building. Our frames are designed for durability, ensuring that your structure can withstand even the most demanding conditions.

#### Other Materials

Every steel structure project requires a range of additional materials to ensure its functionality and performance. From accessories to safety-enhancing features, we offer everything you need to complete your structure.





## Project Cases:











#### Advantages of steel structure buildings

- 1.The components of the steel structure have small section, light weight, easy to transport and installation, suitable for large span, high height, heavy bearing structure.
- 2.Suitable for withstand impact and dynamic load, with good seismic performance.The internal structure of steel is uniform with high reliability.
- 3.Factory mechanized production of steel structure components finished products of high precision, high production efficiency,site assembly speed, short construction period.

Our prefabricated steel structure buildings are pre-cut, pre-drilled, and ready for quick and efficient assembly. Steel buildings work for virtually any building application:Agricultural/ Barns/ Aircraft Hangars/ Welding Shops/Commercial center/Garages/Storage/ Suburban Buildings/ Warehouses/ Workshops/school/wedding hall/dormitory etc.

#### Strict Quality Inspection Standards



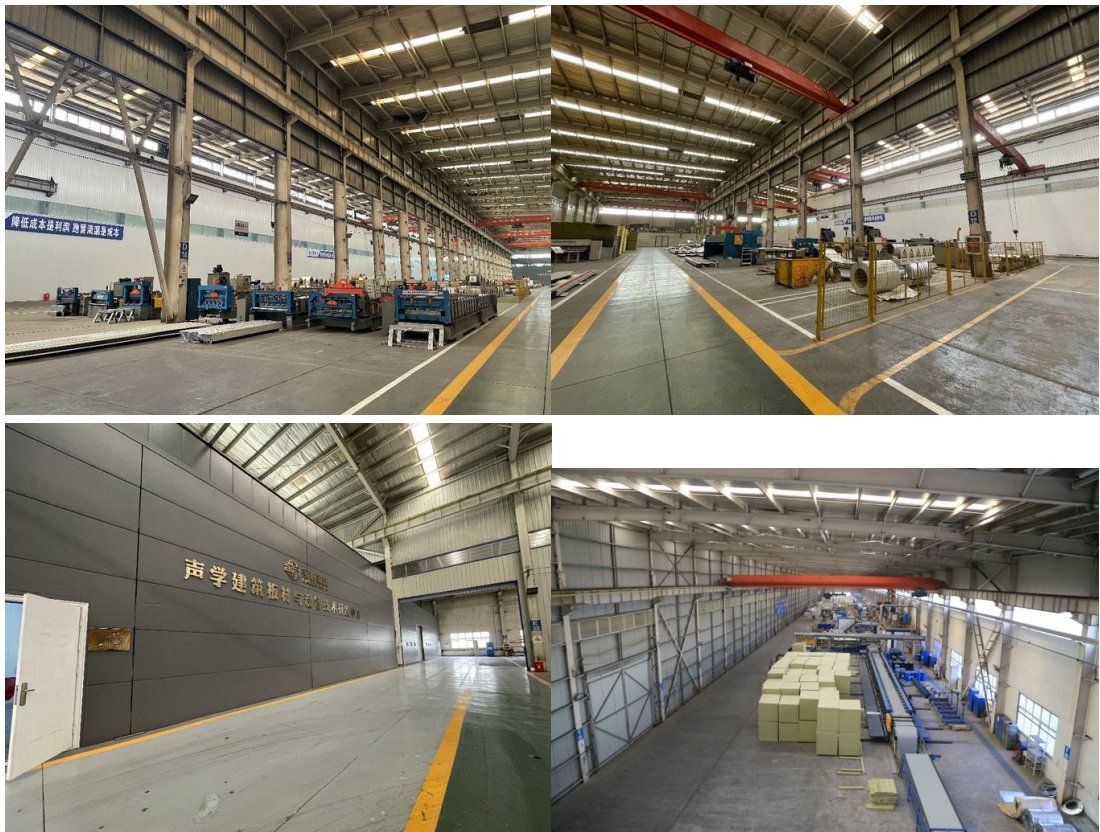
Excellent product quality is our eternal pursuit, and it is also the fundamental reason for us to base ourselves on the global market. BAODU GROUP implements whole-process quality management and strictly supervises every process such as raw material supply, engineering design, steel component manufacturing, installation and construction.

We have established a professional team of quality inspection engineers, introduced internationally leading quality inspection equipment such as German GS1000 vacuum spectrometer and high-frequency infrared carbon sulfur analyzer, established a high-quality product inspection room, and won many awards from China's advanced quality management unit.

In addition, we support testing and certification by SGS, TUV, BV.

#### Our capacity and certification:





## OUR CERTIFICATE



Support and Services:





#### Why Choose Our Steel Structure Factory Buildings?

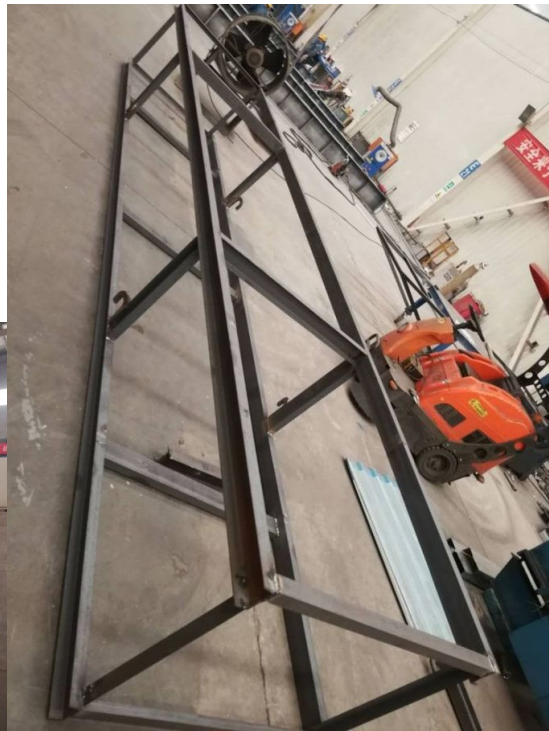
Our industrial steel structures are engineered for maximum efficiency, cost-effectiveness, and long-term durability.

1. Large-Span, Column-Free Interiors
  - Eliminates obstructive columns, allowing flexible production layouts.
2. High-Strength Steel Framework
  - Built with Q355/Q235 high-strength steel, ensuring superior load-bearing capacity.
3. Fast Construction & Cost Efficiency
  - Prefabricated components reduce installation time by 40%-60% compared to concrete buildings.
4. Energy-Efficient & Climate-Resilient
  - Integrated ventilation, skylights, and air circulation systems ensure a comfortable work environment.
5. Customizable & Scalable Solutions
  - Designed for multi-story expansion, incorporating mezzanines, crane beams, and fire-resistant materials.

#### Company profile:

Baodu International Advanced Construction Material Co., Ltd was established in January 2010 with the office in Beijing and factory in Hebei, China. Baodu is a designer, manufacturer, supplier and exporter of industrial noise comprehensive treatment, steel structure, sandwich panel and prefab house. Baodu has an annual output of 6 million square meters of acoustic sandwich panels, 100000 tons of steel structures and 1 million square meters of floor decking sheet. The products are sold in more than 30 countries and regions around the world. Baodu has a professional design team with more than 10 years' experience, including 5 senior engineers, 20 engineers, and 35 technicians. Baodu has several energy saving and environment protection intellectual property rights, construction and environment protection design qualification, CE certification and Russian GOST certification etc. Baodu participated in the military parade village project for the 60th anniversary of China and project of Beijing Daxing International Airport. Under the guidance of China's "one belt, one road" strategy, Baodu has also undertaken overseas projects such as the project of Thar, Pakistan coal fired power plant, Hasyan Dubai power plant and so on. Finally, welcome your coming to Baodu for a visit and cooperation!

## Packing and Shipping:



### Packaging Details :

1.Steel structure components will be in packaging with proper protection.

2.Sandwich panels will be covered with plastic film.

3.Bolts and other accessories will be loaded into wooden Boxes

All the structure components, panels, bolts and sorts of accessories will be well packed with standard package suitable for ocean transport and loaded into 40'HQ.

All the products are loaded at the loading site of our factory using crane and forklift by our skilled workers, who will prevent the goods to be damaged.

Good relationship with many vessel companies to make sure the transportation smooth

## FAQ:

Q1: Is your company a factory or trading company?

A:We are manufacturer with foreign trade department, so you can get competitive price as well as professional service.

Q2: What are your main products?

A: We provide steel structure warehouse, workshop, chicken house, prefab house, container house, steel garage, steel aircraft hangar, sandwich panels and other construction materials.

Q3: What's the quality assurance you provide and how do you make quality control?

A:Quality-first is our core value. Jinggang quality assurance team and quality control team have developed a rigorous quality inspection system based on ISO9001. Testing Laboratory guarantees qualified raw materials and high-standard product.

Q4: Do you offer installation guidance on site? A:Yes, we provide one-stop service of installation, supervision and training by extra. We can send our professional technical engineer to supervise overseas installation.

Q5: What should I provide to get a complete quotation?

A: Please provide information of building dimensions, insulation material, local wind speed and snow load. Then we can make careful design and give competitive quotation.

Q6: What kind of drawing will you provide?

A: Plan drawing, elevation drawing, sectional drawing, foundation drawing and installation drawing.

Q7: How many colors do your sandwich panels have?

A: White grey, dark grey, sea blue, red and customised colors according to your requirements.





**Baodu International Advanced Construction Material Co., Ltd.**



+86 13717927965



chunlei.song@baodu.com



baodupanel.com

Room 1101, Building 6, Yard 9, Hongye Road, Daxing District, Beijing