

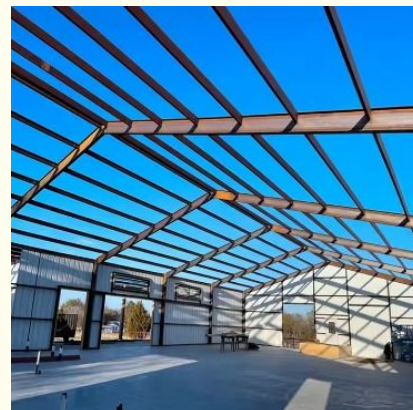
Structural Prefabricated Metal Warehouse Construction Building Eco Friendly

Our Product Introduction

for more products please visit us on baodupanel.com

Basic Information

- Place of Origin: Hebei, China
- Brand Name: BAODU
- Certification: ISO9001, CE
- Model Number: Steel Warehouse
- Minimum Order Quantity: 300 square meters
- Price: \$30-45 square meter
- Packaging Details: In general, for steel structure, we use the steel frame packing to keep goods not to be broken. For sandwich panel and color steel sheet, we use the plastic packing. If the clients need special packing will according to their requirements.
- Delivery Time: 30 days
- Payment Terms: L/C, D/A, D/P, T/T, Western Union, MoneyGram
- Supply Ability: 100000 Square Meter/Square Meters per Month



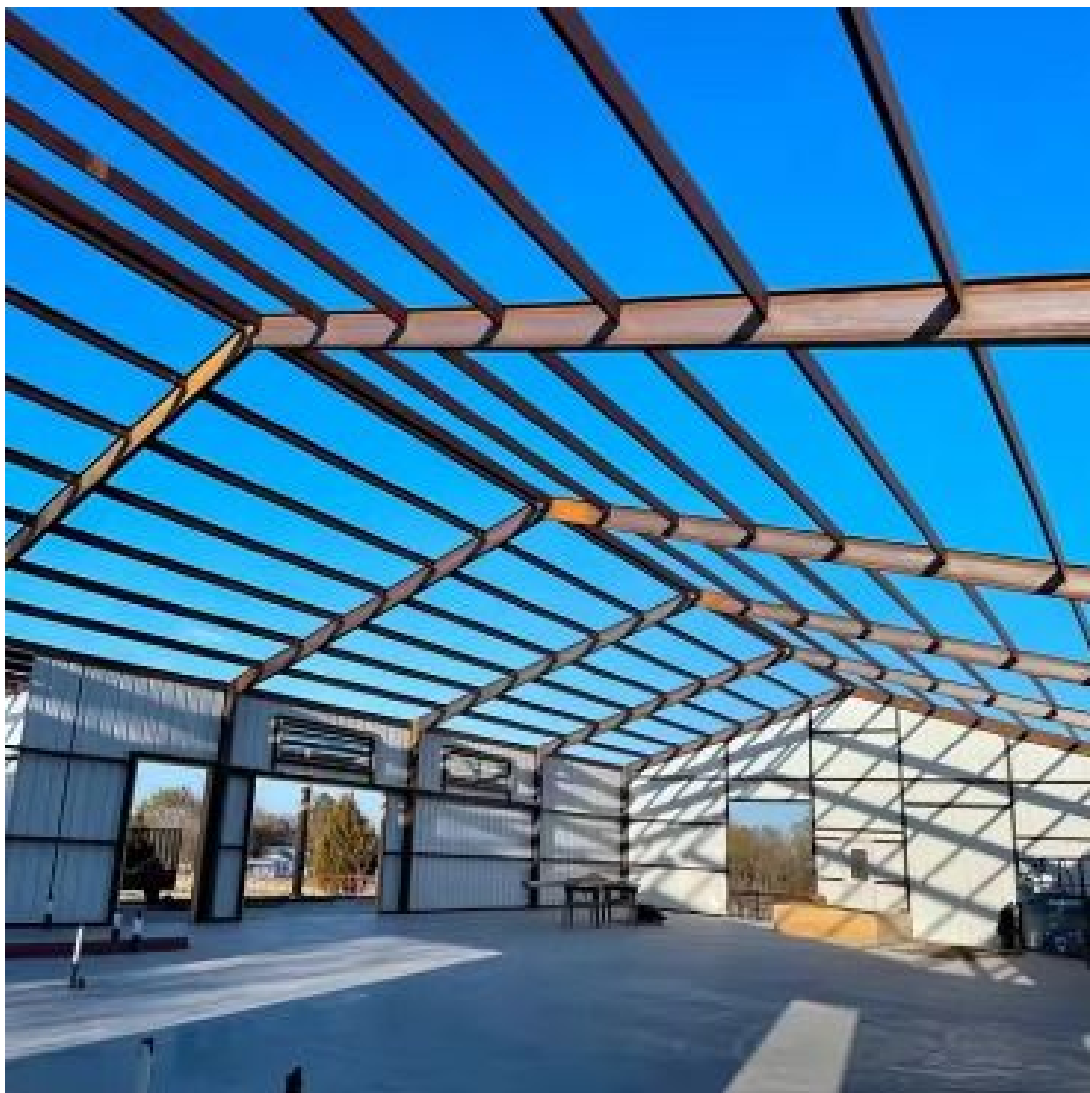
Product Specification

- Product Name: Prefabricated Warehouse Steel Structure
Workshop Industrial Cheap Prefab Cheap
Price Structural Steel Construction Building
Prefabricated Prefab Warehouse Steel
Structure Warehouses With Factory Price
- Warranty: 50 - 100 Year
- Installation: Engineer Guidance
- Processing Service: Bending, Welding, Decoiling, Cutting, Punching
- Environmental Impact: Eco-friendly
- Frame: Weld Steel Structure Frame
- Installation Guide: Installation Drawings And Video
- Bracing: Round Bar/Angle Steel/Steel Rod
- Design: SAP2000/AutoCAD /PKPM /3D3S/TEKLA

Product Description

Prefabricated Warehouse Steel Structure Workshop Industrial Cheap Prefab Cheap Price Structural Steel Construction Building Prefabricated Prefab Warehouse Steel StructureWarehouses with Factory Price

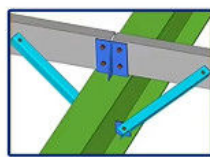
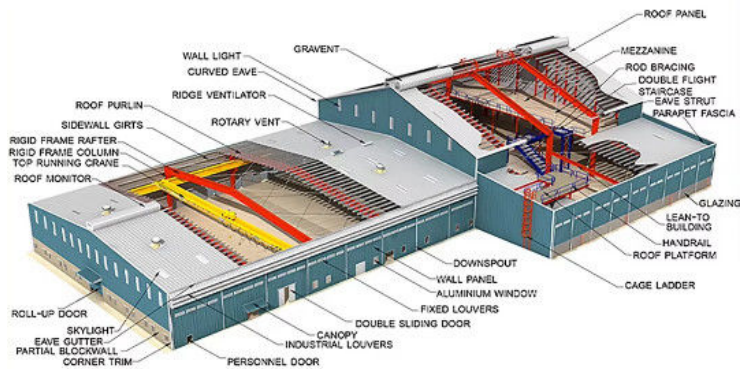
Features:



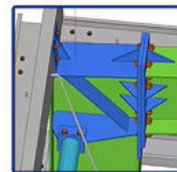
Material list	
Project sample	Steel structure warehouse
Building size	Such as 78*30*8.5 m/ customized
Main steel structure	
Steel column	H(300-550)*200*6*10 mm , steel Q345
Steel beam	H(300-550)*180*6*8 mm, H 300*180*6*8 mm,steel Q345
Second steel structure	
Roof purline	C180*75*50*2.5 mm
Wall purline	C180*75*50*2.5 mm
Cross support	20 round steel bar, steel Q 235
Column bracing	20 round steel bar, steel Q 235
Angle brace	L 50*4 Angle steel , steel Q 235
Tie bar	89*3 mm, steel Q235

Roof and wall panel	
Roof panel	50/80/100/120/150/200 mm sandwich panel (EPS, PU, Rock wool, Glass wool)
Wall panel	50/75/100/120/150/200 mm sandwich panel (EPS, PU, Rock wool, Glass wool)
Rolling up door	Automatic rolling up door
Single wing door	Sandwich panel door
Window	Aluminum/ PVC sliding window with single glass
Fittings	Glass adhesive, self-tapping screw, etc
Other fittings	
Embedded	M 24 steel Q 235, process
Intensive bolt	Grade 10.9
Ordinary bolt	Grade 4.85

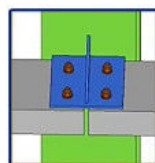
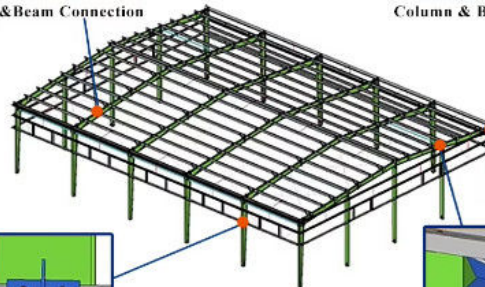
Technical Parameters:



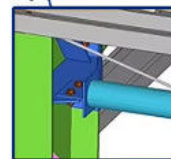
Purlin & Beam Connection



Column & Beam Connection



Purlin & Column Connection



Tie & Column Connection

Components:

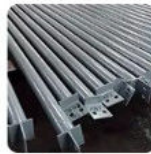
Products materials



Embedded bolts
for foundation



Structure frame
for columns or
beams



Bracing material



Connected plate



Purlin



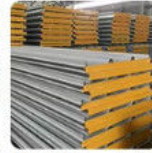
Cladding material
1 - steel sheet



Cladding material
2 - EPS panel



Cladding material
3 - glass wool panel



Cladding material
4 - rock wool panel



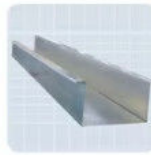
Door option
1 - sliding door



Cladding material
2 - rolling door



Aluminum window



Water gutter



Water pipe



Sealing materi



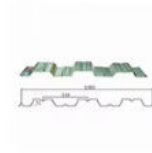
Ventilation
equipment on roof



FRP panel for
lighting



Bolts



Steel decking



Stair (if neede

Baodu Steel Structure is the professional manufacturer of Steel Structure Warehouse, Workshop, Pre-engineered building. Pre-engineered steel structure warehouse is steel structure built over a structural concept of primary members, secondary members, roof and wall sheeting connected to each other and various other building components. These buildings can be provided with different structural and non-structural additions such as skylights, wall lights, turbo vents, ridge ventilators, louvers, roof monitors, doors & windows, trusses, mezzanine floors, fascias, canopies, crane systems, insulation etc., based on the customer's requirements.

Roof and wall project system

The roof and wall system plays a vital role in protecting your structure from environmental factors like wind, rain, and temperature fluctuations. With advanced insulation and weatherproofing, our systems ensure durability and energy efficiency.

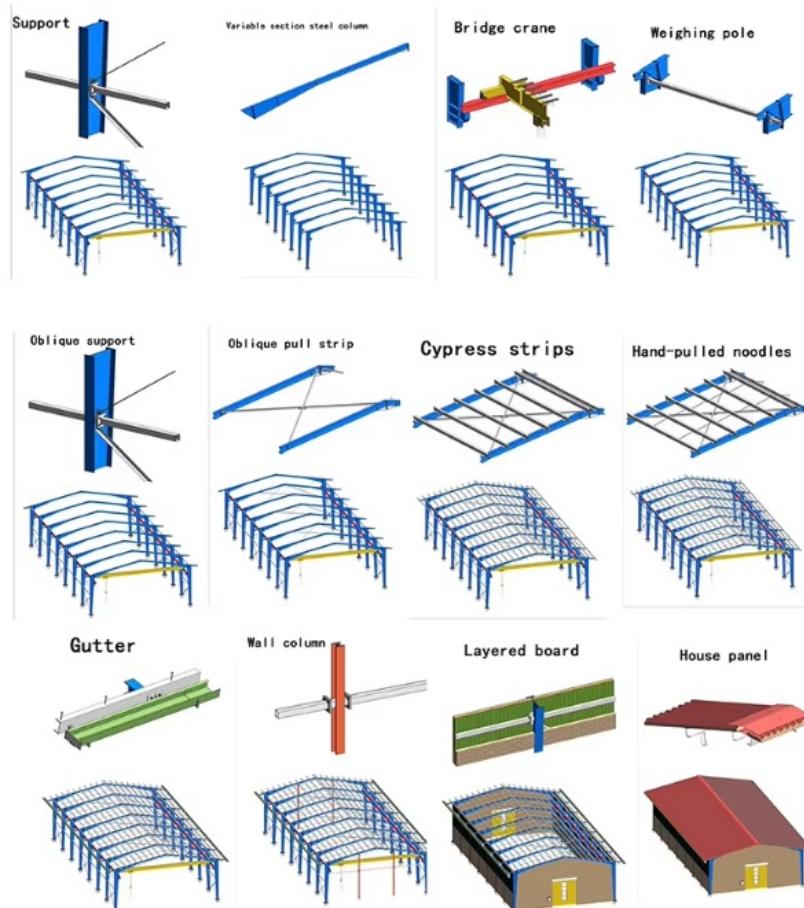
Main Steel Frame

At the core of every steel structure is the main steel frame, which provides the strength and stability necessary to support the entire building. Our frames are designed for durability, ensuring that your structure can withstand even the most demanding conditions.

Other Materials

Every steel structure project requires a range of additional materials to ensure its functionality and performance. From accessories to safety-enhancing features, we offer everything you need to complete your structure.

Steel Building Process:



Project Cases:









Steel structure buildings serve a wide range of purposes, including warehouses, workshops, factories, cold storage facilities, high-rise buildings, shopping malls, power plants, distribution centers, pedestrian bridges, steel-structured hotels, prefabricated public schools, sports arenas and halls, car parking centers, airplane hangars and aviation facilities, church buildings and community centers, poultry farms, agricultural buildings and barns, storage sheds, self-storage buildings, greenhouses, garages, commercial buildings, industrial facilities, and much more.

Strict Quality Inspection Standards

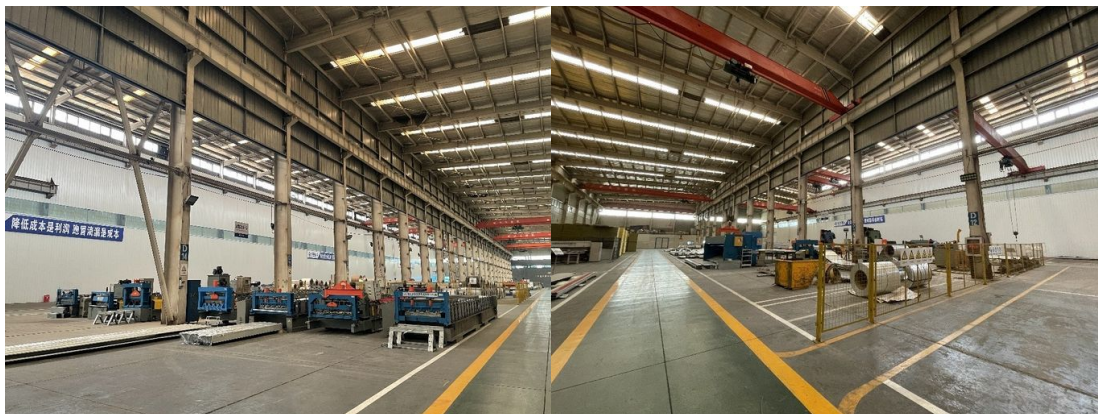


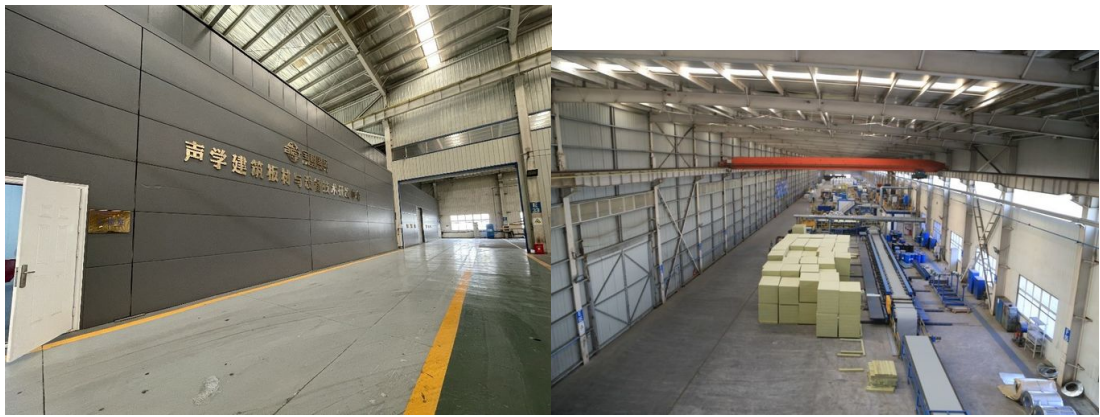
Excellent product quality is our eternal pursuit, and it is also the fundamental reason for us to base ourselves on the global market. BAODU GROUP implements whole-process quality management and strictly supervises every process such as raw material supply, engineering design, steel component manufacturing, installation and construction.

We have established a professional team of quality inspection engineers, introduced internationally leading quality inspection equipment such as German GS1000 vacuum spectrometer and high-frequency infrared carbon sulfur analyzer, established a high-quality product inspection room, and won many awards from China's advanced quality management unit.

In addition, we support testing and certification by SGS, TUV, BV.

Our capacity and certification:





OUR CERTIFICATE



Support and Services:





Why Choose Our Steel Structure Factory Buildings?

Our industrial steel structures are engineered for maximum efficiency, cost-effectiveness, and long-term durability.

1. Large-Span, Column-Free Interiors
 - Eliminates obstructive columns, allowing flexible production layouts.
2. High-Strength Steel Framework
 - Built with Q355/Q235 high-strength steel, ensuring superior load-bearing capacity.
3. Fast Construction & Cost Efficiency
 - Prefabricated components reduce installation time by 40%-60% compared to concrete buildings.
4. Energy-Efficient & Climate-Resilient
 - Integrated ventilation, skylights, and air circulation systems ensure a comfortable work environment.
5. Customizable & Scalable Solutions
 - Designed for multi-story expansion, incorporating mezzanines, crane beams, and fire-resistant materials.

Company profile:

Baodu International Advanced Construction Material Co., Ltd was established in January 2010 with the office in Beijing and factory in Hebei, China. Baodu is a designer, manufacturer, supplier and exporter of industrial noise comprehensive treatment, steel structure, sandwich panel and prefab house. Baodu has an annual output of 6 million square meters of acoustic sandwich panels, 100000 tons of steel structures and 1 million square meters of floor decking sheet. The products are sold in more than 30 countries and regions around the world. Baodu has a professional design team with more than 10 years' experience, including 5 senior engineers, 20 engineers, and 35 technicians. Baodu has several energy saving and environment protection intellectual property rights, construction and environment protection design qualification, CE certification and Russian GOST certification etc. Baodu participated in the military parade village project for the 60th anniversary of China and project of Beijing Daxing International Airport. Under the guidance of China's "one belt, one road" strategy, Baodu has also undertaken overseas projects such as the project of Thar, Pakistan coal fired power plant, Hasyan Dubai power plant and so on. Finally, welcome your coming to Baodu for a visit and cooperation!

Packing and Shipping:



Packaging Details :

1.Steel structure components will be in packaging with proper protection.

2.Sandwich panels will be covered with plastic film.

3.Bolts and other accessories will be loaded into wooden Boxes

All the structure components, panels, bolts and sorts of accessories will be well packed with standard package suitable for ocean transport and loaded into 40'HQ.

All the products are loaded at the loading site of our factory using crane and forklift by our skilled workers, who will prevent the goods to be damaged.

Good relationship with many vessel companies to make sure the transportation smooth

FAQ



STRIVE TO SURPASS CUSTOMER'S EXPECTATIONS

Q1. Are you trading company or factory?

A1. We have our own factory so that we can provide the best price for you.

Q2. Where is your factory?

A2. Our factory is located in Yongqing Hebei Province which is only one

Q3. How is your production capacity of sandwich panel?

A3. Our sandwich panel production line is imported from Europe and we can produce 3000 square meters per day.

Q4. What are your advantages.

A4. As a high technology company in the construction material industry, we have our own technician team, most of whom have more than 10 years experience. And we also have the strict quality control in our production lines.

Q5. What is your payment term and delivery time?

A5. We accept the T/T or L/C. And the Ali trade assurance is also acceptable. As for the delivery time, we need make the production plan for each order. Usually, it will take about 10 days after we confirm the order.

Q6. How about the sample order?

A6. We provide free samples, but you need pay the freight for it.

Q7. How about your After-sales policy?

A7. Baodu wants to provide the best products and service to each client. We will provide the online after-sales training. If necessary, you can visit our factory.



Baodu International Advanced Construction Material Co., Ltd.

+86 13717927965

chunlei.song@baodu.com

baodupanel.com

Room 1101, Building 6, Yard 9, Hongye Road, Daxing District, Beijing