

## Steel Structure New Design Hangar Garage Warehouse Prefabricated Building

Our Product Introduction

for more products please visit us on [baodupanel.com](http://baodupanel.com)

### Basic Information

- Place of Origin: Hebei, China
- Brand Name: BAODU
- Certification: ISO9001, CE
- Model Number: Steel Warehouse
- Minimum Order Quantity: 300 square meters
- Price: \$30-45 square meter
- Packaging Details: In general, for steel structure, we use the steel frame packing to keep goods not to be broken. For sandwich panel and color steel sheet, we use the plastic packing. If the clients need special packing will according to their requirements.
- Delivery Time: 30 days
- Payment Terms: L/C, D/A, D/P, T/T, Western Union, MoneyGram
- Supply Ability: 10000 Square Meter/Square Meters per Month



### Product Specification

- Product Name: Steel Structure New Design Hangar Garage Warehouse Prefabricated Building
- Warranty: 50 - 100 Year
- Main Frame: Welded H Steel Beam, Steel Truss
- Installation: Bolt Connecting
- Surface Treatment: Painting Or Galvanized
- Processing Service: Bending, Welding, Decoiling, Cutting, Punching
- Application Fields: Warehouse, Factory, Steel Structure Building
- Color: Customized Color
- After-sale Service: Online Technical Support, Other

## Product Description

### Steel Structure New Design Hangar Garage Warehouse Prefabricated Building

#### Advantages of steel structure buildings:



#### 1.High Strength-to-Weight Ratio:

Reduces foundation size and cost; enables the construction of super-tall buildings and long-span structures (stadiums, airports, large factories, bridges); less demanding on soil bearing capacity.

#### 2.Excellent Ductility and Toughness:

Provides outstanding seismic (earthquake) resistance. During an earthquake, the structure can deform plastically to absorb seismic energy, preventing catastrophic collapse and enhancing occupant safety.

#### 3.High Degree of Prefabrication & Faster Construction:

Significantly shorter project schedules (can reduce time by 30%-50%), leading to faster return on investment; minimizes wet trades, construction waste, noise, and dust pollution on site; improves overall construction quality control.

#### 4.Slimmer Members & Increased Usable Space:

Creates more usable floor area and higher clear ceiling heights within the same building footprint (allowing for larger column-free bays and shallower floor depths); offers greater flexibility in architectural layout and space planning.

#### 5.Material Homogeneity & Predictable Performance:

Structural calculations and models closely match real-world behavior, resulting in highly reliable design outcomes; material quality is easier to control and inspect through standardized testing methods.

#### We can provide :

#### 1.Customization Service

We have a professional design team about 20 people, with 10 years design experience. We can meet your individual needs.

And multi-type steel components, roof and wall panels, doors and windows for choosing.



## 2. Strict Quality Inspection

With good quality steel material, we have AWS-D1.1/D1.5 welding quality system and professional CWI welding inspector to ensure high quality of the product.

## 3. Shortest Delivery Time

We have 2 modern factories and 3 production lines with a total area of 150000 square meters to produce. We guarantee a warehouse of 5000 square meters and delivery within 30 days.

#### **4. Production Visualization**

We can provide you with picture,video information of all production links, from raw materials to steel processing, the whole process of visual production. You can even video call us to watch workshop production.

#### **5. Packing and Delivery**

Container and pallet packing will protect the surface paint or zinc of the steel structures. In order to facilitate your installation, we will mark each component in sequence according to the drawings.

#### **6. Installation Guide**

Installation instruction and video will be provide, we can also send our engineers to your site as installation guide, they will teach your people how to build project.

**Technical Parameters:** \_\_\_\_\_



AUTODESK  
AUTOCAD

PKPM 2010

3D3S

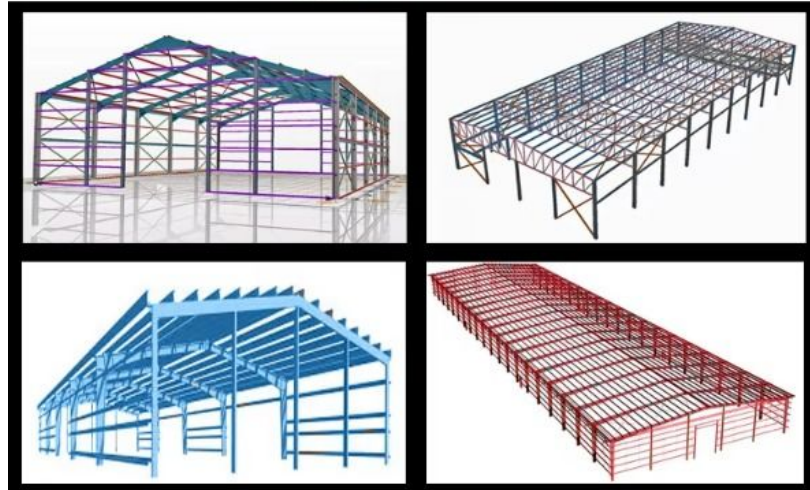
SAP2000



Tekla  
Structures



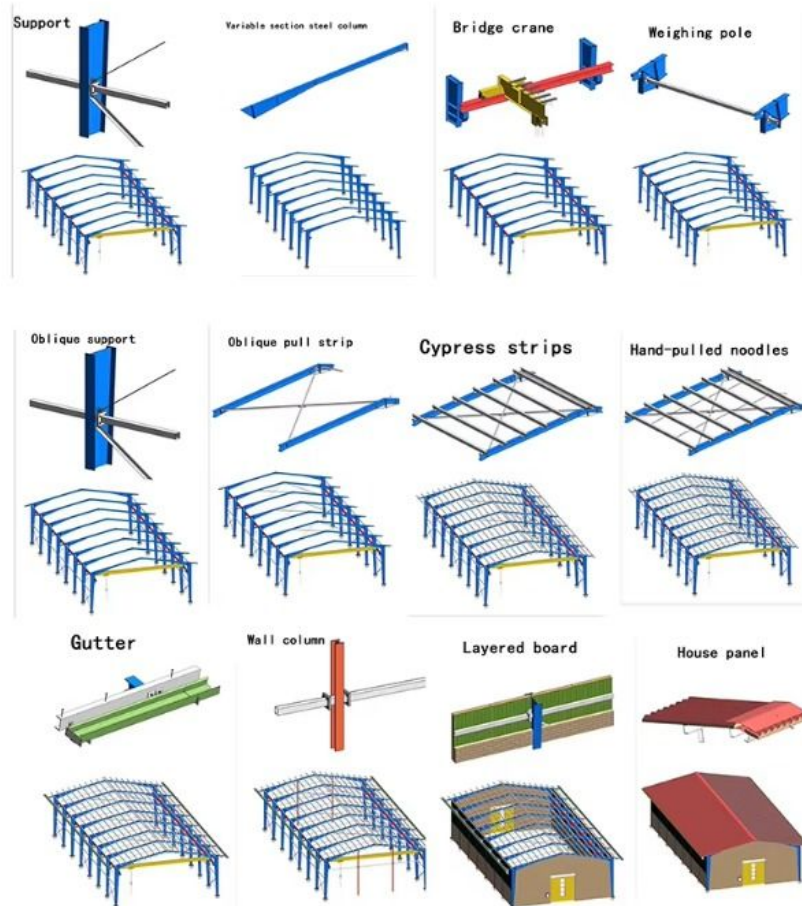
3DS MAX



**Please kindly inform us of the information below if you are interested in our products.**

1. **Project Progress:** Is Land Purchased? Is it licensed by the government?
2. **Usage:** for warehouse, workshop, showroom, etc.
3. **Location:** In which country will it be built?
4. **Local Climate:** Wind speed, Snow load (max. Wind speed)
5. **Design:** Please provide the design drawing. Or do you need us to design for you?
6. **Dimension:** Length\*width\*height
7. **Crane Beam:** Do you need crane beam inside the steel structure?
8. **Roof and Wall:** determine the panel material, such as color steel panel, and metal sandwich panel.
9. **Windows and Doors:** what material, quantity, and type?

**Installation:** \_\_\_\_\_



1. We can offer you the manual include the photos and drawings, or some videos for help you on the installation. And you will organize the local people to install it. 93% of our clients finished their houses in this way.

2. We can send our people to your site to guide your people to install. Or send team people (3-5 people) to your site to install for you. This way is most easy way, but you need to pay their round-way tickets, local food, accommodation, transportation, communication and salary, and also their security on the site. Almost 5% of our clients choose this way. And in the normal we will require the order should be more than 100000USD.

3. You can send your people (engineers or the technician) to our co- mpany to study the installation details. 2% of our clients choose this way for their orders.

### Applications:





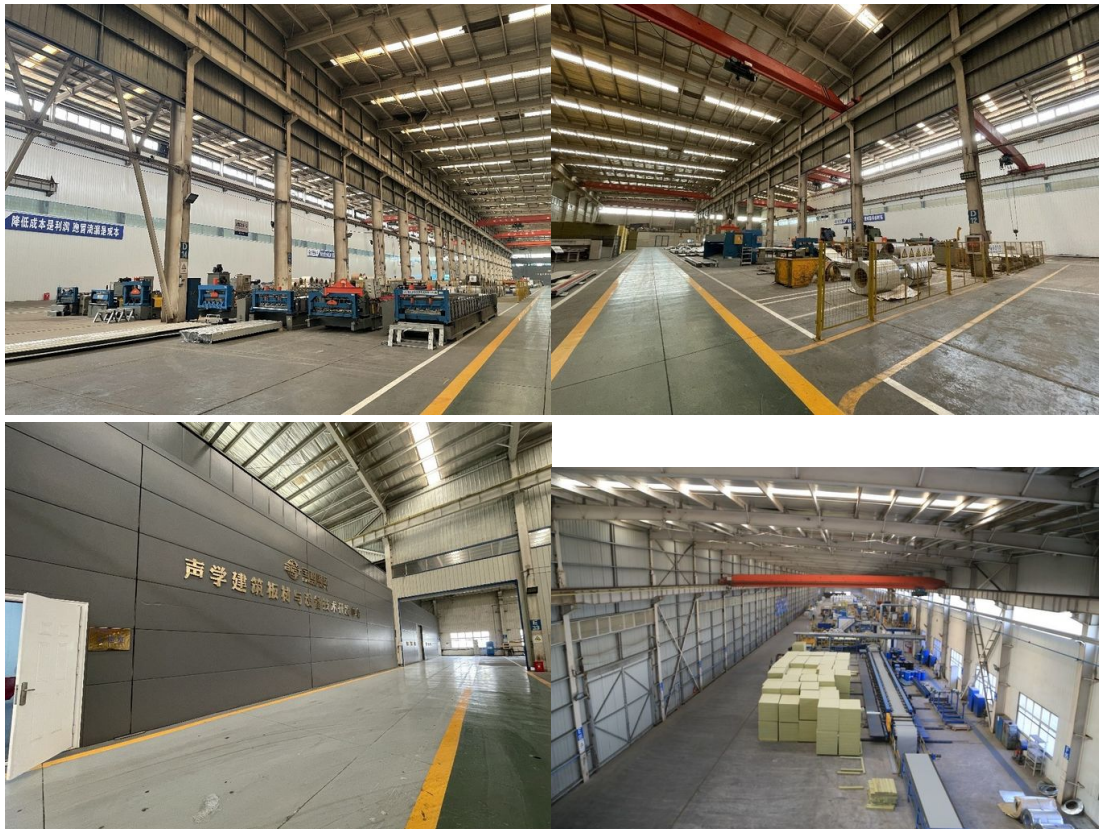






Steel structure buildings serve a wide range of purposes, including warehouses, workshops, factories, cold storage facilities, high-rise buildings, shopping malls, power plants, distribution centers, pedestrian bridges, steel-structured hotels, prefabricated public schools, sports arenas and halls, car parking centers, airplane hangars and aviation facilities, church buildings and community centers, poultry farms, agricultural buildings and barns, storage sheds, self-storage buildings, greenhouses, garages, commercial buildings, industrial facilities, and much more.

#### Our capacity and certification:





## OUR CERTIFICATE



1. We have a group of professional engineers, most of whom has more than 20 years experiences in architecture field. our company has got a various of experiences in design, manufacture, installation and so on. The work staff have excellent skills. Some of them had helped customers to install the warehouse around the world.
2. We will offer one stop service. construction drawing, calculation sheet will be offered to help you get construction permit. Foundation design could be free made if you need. We could make 3D drawings to show the view. What's more, Installation drawings will be offered and Steel structure column, beams will be marked number on it to help you install.
3. We will send you extra bolts, purlins, panels incase any damage when install.
4. Efficiency is our pursuit. Every inquiry ,emails will be replied immediately. Every questions will be paid high attention.
5. We also have possessed more than 40 sets of large precise and domestically advanced processing equipments, including large gantry planing machines, automatic submerged arc welding machines, assembling machines, slitters, shot blasting machines and soon.
6. We will offer details packing list for every container when load so it will be easier to unload.
7. "Moral personality decides product quality." is our guarantee to the products. "Customers come first." is our everlasting pursuit. Believe your choose, we'll give you a satisfied answer.

## Support and Services:





### Company profile:

Baodu International Advanced Construction Material Co., Ltd was established in January 2010 with the office in Beijing and factory in Hebei, China. Baodu is a designer, manufacturer, supplier and exporter of industrial noise comprehensive treatment, steel structure, sandwich panel and prefab house. Baodu has an annual output of 6 million square meters of acoustic sandwich panels, 100000 tons of steel structures and 1 million square meters of floor decking sheet. The products are sold in more than 30 countries and regions around the world. Baodu has a professional design team with more than 10 years' experience, including 5 senior engineers, 20 engineers, and 35 technicians. Baodu has several energy saving and environment protection intellectual property rights, construction and environment protection design qualification, CE certification and Russian GOST certification etc. Baodu participated in the military parade village project for the 60th anniversary of China and project of Beijing Daxing International Airport. Under the guidance of China's "one belt, one road" strategy, Baodu has also undertaken overseas projects such as the project of Thar,Pakistan coal fired power plant, Hasyan Dubai power plant and so on. Finally, welcome your coming to Baodu for a visit and cooperation!

### Packing and Shipping:





#### Packaging Details :

1. Steel structure components will be in packaging with proper protection.
2. Sandwich panels will be covered with plastic film.
3. Bolts and other accessories will be loaded into wooden Boxes

All the structure components, panels, bolts and sorts of accessories will be well packed with standard package suitable for ocean transport and loaded into 40'HQ.

All the products are loaded at the loading site of our factory using crane and forklift by our skilled workers, who will prevent the goods to be damaged.

Good relationship with many vessel companies to make sure the transportation smooth

#### Contact us:

 <b>Song Chunlei</b> Overseas Manager	<b>Business Scope:</b> Prefab House      Sandwich Panel Container House      Steel Structure
 <b>Baodu International Engineering Technology Co., Ltd</b> Add : Floor 11, Jiayue Square, Xihongmen, Daxing District, Beijing, China 100162 Tel : +86-10-60256462 Fax : +86-10-61225599 Mobile : +86-13717927965 Email : chunlei.song@baodu.com Website: www.baodu.com	

#### FAQ:

1. How to buy your idea products?

You can provide us your drawing, and we can produce as your drawings.

Or we can design as your requirements if you don't have a clear plan. We will provide our plans according to the local climatic condition.

2. What factors should be considered in customizing the prefab house?

2.1: The local weather condition. We need to know the wind speed, the snow loading (if it's snowing area), the Seismic rating.

2.2: The size of the land can be for this building.

2.3: The purpose of the building, like do you need it for labour accommodation, office, or steel frame workshop, etc.

3. What countries or regions does our product export to?

Our main market is Africa and Asia, South America, etc. We have exported to many countries like: Australia, Angola, Senegal, Kenya, Indonesia, Thailand, Uruguay, Chile, America, and UK, etc.

4. The materials option for the thermal insulation:

4.1: corrugated steel sheet, thickness from 0.3mm-0.6mm

4.2: thermal insulation material: EPS sandwich panel, glass wool sandwich panel, rock wool sandwich panel, PU (polyurethane) sandwich panel.



+86 13717927965



chunlei.song@baodu.com



baodupanel.com

Room 1101, Building 6, Yard 9, Hongye Road, Daxing District, Beijing