

## Durable Modern Prefab Steel Warehouse Buildings Effective

### Our Product Introduction

for more products please visit us on [baodupanel.com](http://baodupanel.com)

#### Basic Information

- Place of Origin: Hebei, China
- Brand Name: BAODU
- Certification: ISO9001, CE
- Model Number: Steel Warehouse
- Minimum Order Quantity: 1000 square meters
- Price: \$28-36 square meter
- Packaging Details: In general, for steel structure, we use the steel frame packing to keep goods not to be broken. For sandwich panel and color steel sheet, we use the plastic packing. If the clients need special packing will according to their requirements.
- Delivery Time: 30 days
- Payment Terms: L/C, D/A, D/P, T/T, Western Union, MoneyGram
- Supply Ability: 10000 Square Meter/Square Meters per Month



#### Product Specification

- Product Name: Modern Design Prefabricated Hangar  
Storage Shed Building Construction  
Industrial Steel Structure Workshop  
Warehouse
- Warranty: More Than 50 Years
- Main Frame: Welded H Steel Beam, Steel Truss
- Processing Service: Bending, Welding, Decoiling, Cutting, Punching
- Application Fields: Warehouse, Factory, Steel Structure Building
- Frame: Weld Steel Structure Frame
- Secondary Frame: C&Z Purlin, Brace
- Installation Guide: Installation Drawings And Video
- Foundation: Bolt-Connected Precast Concrete Base
- Standard: AISI, ASTM, BS, DIN, GB, JIS

## Product Description

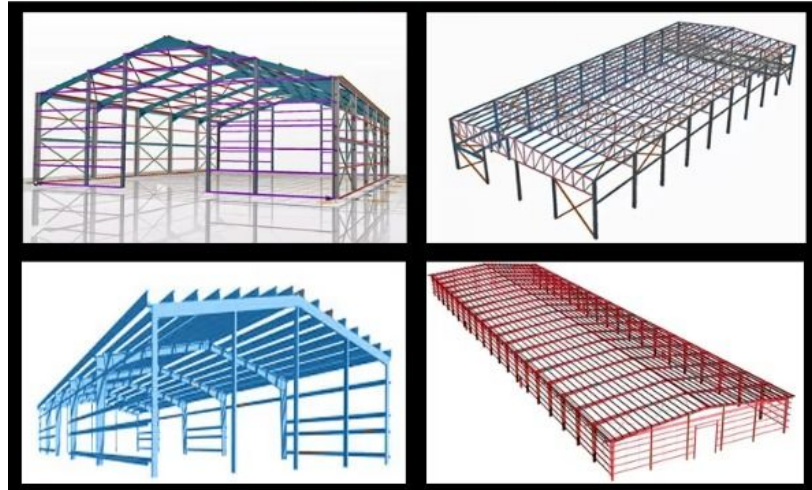
### Modern Design Prefabricated Hangar Storage Shed Building Construction Industrial Steel Structure Workshop Warehouse

#### Features:



This steel structure warehouse is designed for small to medium-sized enterprises, specifically for storing various types of goods. The warehouse requires ample space and high load-bearing capacity to accommodate a range of items, from lightweight products to heavy machinery. To meet diverse storage needs, the warehouse features an efficient ventilation system and moisture-proof design, ensuring that air circulates properly inside and preventing moisture buildup, thus protecting stored items from dampness and corrosion.

#### Technical Parameters:

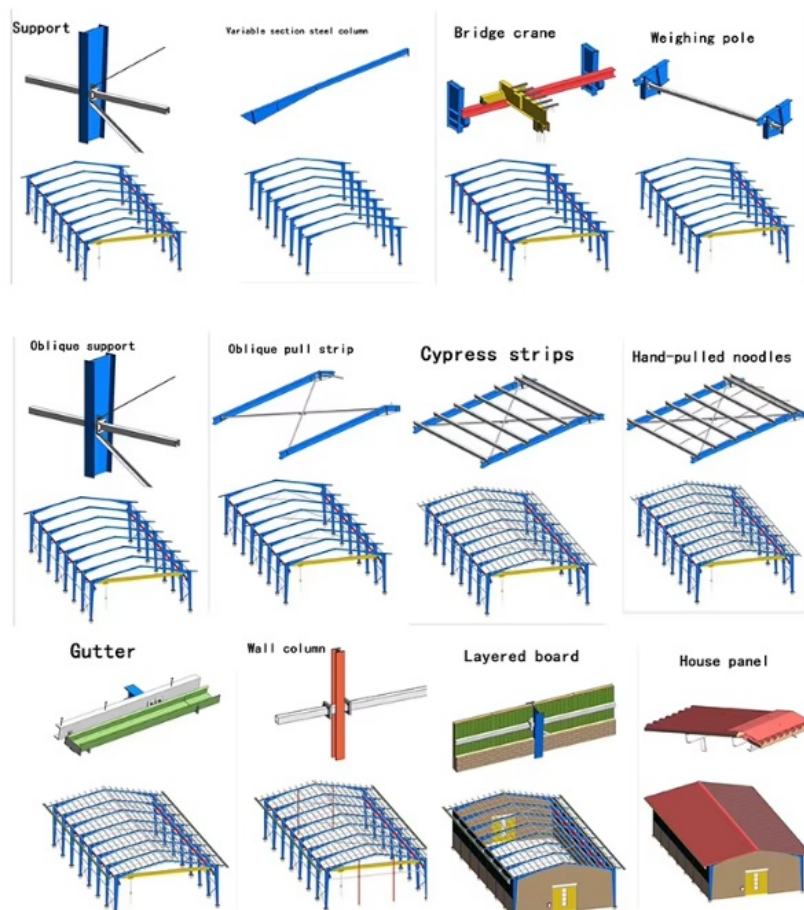


If you have drawings, welcome to share drawings with us, quotation will be done based your drawings. Our excellent design team will design the steel structure workshop warehouse for you. If you give the following information, we will give you an satisfactory drawing.

- 1 Location (where will be built? ) which country? which city?
- 2 Size: Length\*width\* Eave height \_\_\_\_\_mm\*\_\_\_\_\_mm\*\_\_\_\_\_mm
- 3 wind load (max. Wind speed) \_\_\_\_\_kn/m2, \_\_\_\_\_km/h, \_\_\_\_\_m/s
- 4 snow load (max. Snow height) \_\_\_\_\_kn/m2, \_\_\_\_\_mm, temperature range?
- 5 anti-earthquake \_\_\_\_\_level
- 6 brickwall needed or not If yes, 1.2m high or 1.5m high? or other?
- 7 thermal insulation If yes, EPS, fiberglass wool, rockwool, PU sandwich panels will be suggested; If not, the metal steel sheets will be ok. The cost of the latter will be much lower than that of the former.
- 8 door quantity & size \_\_\_\_\_units, \_\_\_\_\_(width)mm\*\_\_\_\_\_ (height)mm
- 9 window quantity & size \_\_\_\_\_units, \_\_\_\_\_(width)mm\*\_\_\_\_\_ (height)mm
- 10 crane needed or not If yes, \_\_\_\_\_units, max. Lifting weight \_\_\_\_\_tons; Max. Lifting height \_\_\_\_\_m

**If you are interested in our products, you can contact us at any time.**

### Steel Building Process:



## Advantages:

1. **High Strength and Durability:** The steel structure warehouse is built using high-strength galvanized steel, offering excellent wind and earthquake resistance. The materials are specially treated to be rust-resistant and corrosion-proof, ensuring the warehouse can withstand various weather conditions for long-term use.
2. **Quick and Easy Installation:** The warehouse utilizes a modular design, with all components prefabricated in the factory and assembled on-site. This greatly simplifies the installation process, typically allowing the entire warehouse to be erected within a few days, saving significant time and labor costs.
3. **Multi-Functional Uses and Customization Options:** The steel structure warehouse can be customized according to different business needs, such as adding insulation layers, selecting different roof designs, or incorporating multi-tier shelving systems. Its flexibility makes it suitable not only for general goods storage but also for special scenarios like cold storage or hazardous material storage.
4. **Cost-Effectiveness and Economic Efficiency:** Compared to traditional brick-and-mortar structures, steel structure warehouses offer cost advantages in both materials and installation. Furthermore, due to their durability and low maintenance requirements, the long-term operational costs are significantly reduced, providing a higher return on investment.
5. **Environmental Friendliness and Sustainability:** The warehouse uses recyclable steel materials, adhering to environmental standards. It also incorporates energy-efficient designs, reducing energy consumption. Natural lighting design minimizes reliance on artificial lighting, further lowering operational costs.
6. **Safety and Extreme Weather Protection:** The steel structure warehouse is designed to withstand extreme weather conditions such as strong winds and heavy rain. The robust structure provides excellent wind and snow resistance, and optional security systems can be installed to enhance the warehouse's safety.
7. **Customization and Scalability Options:** The warehouse supports future expansion needs and can be easily modified or expanded modularly based on the company's growth, accommodating different spatial and functional requirements.
8. **Long-Term Cost Savings and Return on Investment:** The low maintenance needs and durable lifespan of the steel structure warehouse allow businesses to save on maintenance expenses over time, enhancing long-term economic benefits.

## Project Cases:









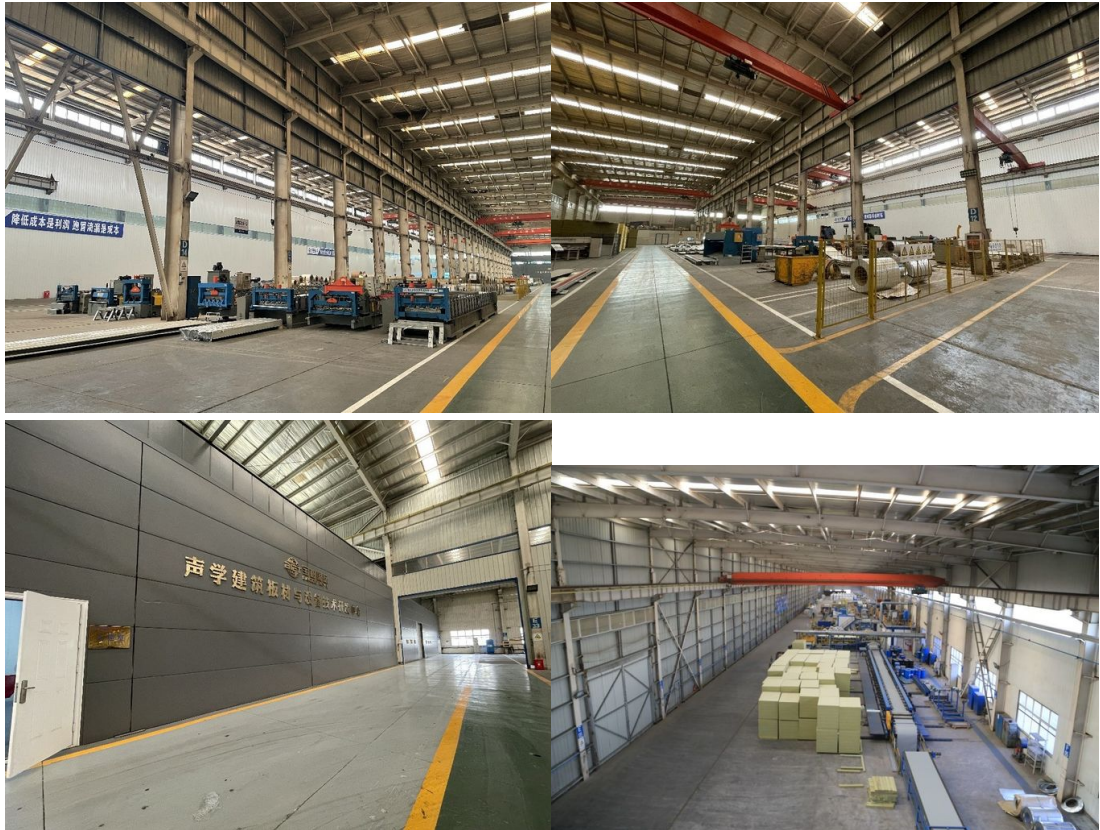
### Strict Quality Inspection Standards





Excellent product quality is our eternal pursuit, and it is also the fundamental reason for us to base ourselves on the global market. BAODU GROUP implements whole-process quality management and strictly supervises every process such as raw material supply, engineering design, steel component manufacturing, installation and construction. We have established a professional team of quality inspection engineers, introduced internationally leading quality inspection equipment such as German GS1000 vacuum spectrometer and high-frequency infrared carbon sulfur analyzer, established a high-quality product inspection room, and won many awards from China's advanced quality management unit. In addition, we support testing and certification by SGS, TUV, BV.

### Our capacity and certification:



### OUR CERTIFICATE



1. We have a group of professional engineers, most of whom has more than 20 years experiences in architecture field. our company has got a various of experiences in design, manufacture, installation and so on. The work staff have excellent skills. Some of them had



helped customers to install the warehouse around the world.

2. We will offer one stop service. construction drawing, calculation sheet will be offered to help you get construction permit. Foundation design could be free made if you need. We could make 3D drawings to show the view. What's more, Installation drawings will be offered and Steel structure column, beams will be marked number on it to help you install.

3. We will send you extra bolts, purlins, panels incase any damage when install.

4. Efficiency is our pursuit. Every inquiry ,emails will be replied immediately. Every questions will be paid high attention.

5. We also have possessed more than 40 sets of large precise and domestically advanced processing equipments, including large gantry planing machines, automatic submerged arc welding machines, assembling machines, slitters, shot blasting machines and soon.

6. We will offer details packing list for every container when load so it will be easier to unload.

7. "Moral personality decides product quality." is our guarantee to the products. "Customers come first." is our everlasting pursuit. Believe your choose, we'll give you a satisfied answer.

## Support and Services:



## Company profile:

Baodu International Advanced Construction Material Co., Ltd was established in January 2010 with the office in Beijing and factory in Hebei, China. Baodu is a designer, manufacturer, supplier and exporter of industrial noise comprehensive treatment, steel structure,



sandwich panel and prefab house. Baodu has an annual output of 6 million square meters of acoustic sandwich panels, 100000 tons of steel structures and 1 million square meters of floor decking sheet. The products are sold in more than 30 countries and regions around the world. Baodu has a professional design team with more than 10 years' experience, including 5 senior engineers, 20 engineers, and 35 technicians. Baodu has several energy saving and environment protection intellectual property rights, construction and environment protection design qualification, CE certification and Russian GOST certification etc. Baodu participated in the military parade village project for the 60th anniversary of China and project of Beijing Daxing International Airport. Under the guidance of China's "one belt, one road" strategy, Baodu has also undertaken overseas projects such as the project of Thar, Pakistan coal fired power plant, Hasyan Dubai power plant and so on. Finally, welcome your coming to Baodu for a visit and cooperation!

### Packing and Shipping:



#### Packaging Details :

1.Steel structure components will be in packaging with proper protection.

2.Sandwich panels will be covered with plastic film.

3.Bolts and other accessories will be loaded into wooden Boxes

All the structure components, panels, bolts and sorts of accessories will be well packed with standard package suitable for ocean transport and loaded into 40'HQ.

All the products are loaded at the loading site of our factory using crane and forklift by our skilled workers, who will prevent the goods to be damaged.

Good relationship with many vessel companies to make sure the transportation smooth



**Baodu International Advanced Construction Material Co., Ltd.**

+86 13717927965

chunlei.song@baodu.com

baodupanel.com

Room 1101, Building 6, Yard 9, Hongye Road, Daxing District, Beijing