

Low Cost High Quality Custom Durable Made in China Hot Steel Structure Warehouse Storage Shed Prefabricated Building

Our Product Introduction

for more products please visit us on baodupanel.com

Basic Information

- Place of Origin: Hebei, China
- Brand Name: BAODU
- Certification: ISO9001, CE
- Model Number: Steel Warehouse
- Minimum Order Quantity: Discussible
- Price: Reasonable
- Packaging Details: In general, for steel structure, we use the steel frame packing to keep goods not to be broken. For sandwich panel and color steel sheet, we use the plastic packing. If the clients need special packing will according to their requirements.
- Delivery Time: 15-21 days
- Payment Terms: L/C, D/A, D/P, T/T, Western Union, MoneyGram
- Supply Ability: 10000 Square Meter/Square Meters per Month



Product Specification

- Product Name: Low Cost High Quality Custom Durable Made In China Hot Steel Structure Warehouse Storage Shed Prefabricated Building
- Roof & Wall Panel: Color Steel Veneer, Rockwool Sandwich Panel, PU Sandwich Panel Etc
- Window: Aluminum Alloy Window, Plastic Steel
- Keyword: Steel Structure Building Warehouse
- Purlin: C/Z Galvanized Steel(Q235)
- Application: Warehouse, factory, prefab House, poultry House
- Service Life: 50 Years
- Structure: Steel Structure Frame Welded
- Crane Capacity: 5Tons*2 Pcs
- Design Software: Auto CAD, Teckla

Low Cost High Quality Custom Durable Made in China Hot Steel Structure Warehouse Storage Shed Prefabricated Building

Product Description:

1. Baodu Prefabricated Steel Structure Building Products:
Lightweight Steel Structures: Used for small to medium-sized buildings such as warehouses, factories, and commercial spaces. They are cost-effective, lightweight, and quick to assemble. Heavy Steel Structures: Suitable for large-scale buildings like industrial factories, bridges, airports, and stations, these structures have high load-bearing capacities. Multi-story & High-rise Steel Structures: These are used in office buildings, residential complexes, and mixed-use developments. They offer seismic resistance and fast construction timelines.

2. Industrial Steel Structures building:
Factories/Warehouses: Steel structures for industrial facilities, including both single-story and multi-story factory buildings.Storage Warehouses: Tailored steel structures for storage and logistics needs.

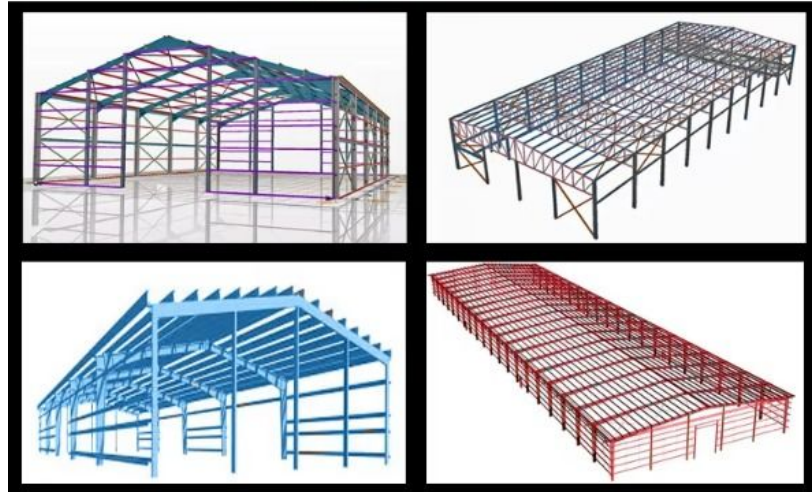
3. Special Steel Structures
Prefabricated Steel Modules: Used for modular construction, allowing for quick installation of pre-assembled units.
Space Frame Structures: Ideal for large-span structures like stadiums, exhibition halls, and airport terminals.
Steel Curtain Walls: Used for building facades in commercial office buildings, creating a modern aesthetic while offering durability.

4. Supporting Products & Services
Roof and Wall Systems: Including color-coated steel panels, insulated sandwich panels, and other weather-resistant materials for efficient thermal insulation and waterproofing. Corrosion & Fire Protection Coatings: Specialized coatings to protect steel from corrosion and to enhance fire safety. Design and Installation Services: Comprehensive services, including structural design, engineering, and on-site construction support.

Features:

Items	Part	Specification	
Main frame	Column	H Section Steel/Rectangular tube	Q235B/Q355B
	Beam	H Section Steel/Rectangular tube	Q235B/Q355B
	Purlin	C Section Steel/Rectangular tube	Q235B/Q355B
	Support	Round steel/Channel steel	Q235B/Q355B
Roof system	Insulating layer	Sandwich composite board	
	Breathable layer	Polyethylene film	
	Waterproof layer	Waterproof cushion	
Wall system	Wallboard	EPS panels	
Processing	Coating	Paint	Primer
			Intermediate coat
			Top coat
		Fire retardant coating	Fire resistance 1.5h
Accessories	Door	Customers' Request	
	Wingdows	Customers' Request	
Other	Color	Customers' Request	
	Size	Customers' Request	
	Other	Customers' Request	

Technical Parameters:



If you are interested in our steel structure , please give us the following information:

- 1 Location (where will be built?) _____country, area
- 2 Size: Length*width*height _____mm*_____mm*_____mm
- 3 wind load (max. Wind speed) _____kn/m2, _____km/h, _____m/s
- 4 snow load (max. Snow height)_____kn/m2, _____mm
- 5 anti-earthquake _____level
- 6 brickwall needed or not If yes, 1.2m high or 1.5m high
- 7 thermal insulation If yes, EPS, fiberglass wool, rockwool, PU sandwich panels will be suggested; If not, the metal steel sheets will be ok. The cost of the latter will be much lower than that of the former.
- 8 door quantity & size _____units, _____(width)mm*_____ (height)mm
- 9 window quantity & size _____units, _____(width)mm*_____ (height)mm
- 10 crane needed or not If yes, _____units, max. Lifting weight_____tons; Max. Lifting height _____m.

Applications:





Support and Services:



Packing and Shipping:



Product Packaging:

All steel components are packaged in bundles and secured with steel straps.

Wall and roof panels are packaged in crates.

All hardware and accessories are packaged in boxes.

Assembly instructions and drawings are included in each package.

Shipping:

The prefab steel warehouse will be shipped in containers by sea or land transport.

Delivery time will depend on the destination and shipping method selected.

Customers will be notified of the expected delivery date and given tracking information.

Delivery fees are calculated based on the destination and weight of the shipment.

Customs clearance and import duties are the responsibility of the customer.



Baodu International Advanced Construction Material Co., Ltd.



+86 13717927965



chunlei.song@baodu.com



baodupanel.com

Room 1101, Building 6, Yard 9, Hongye Road, Daxing District, Beijing