

## Large Scale Garages Prefab Warehouse Building Kits Versatile

### Our Product Introduction

for more products please visit us on [baodupanel.com](http://baodupanel.com)

#### Basic Information

- Place of Origin: Hebei, China
- Brand Name: BAODU
- Certification: ISO9001, CE
- Model Number: Steel Warehouse
- Minimum Order Quantity: 200 square meter
- Price: \$27-60/square meter
- Packaging Details: In general, for steel structure, we use the steel frame packing to keep goods not to be broken. For sandwich panel and color steel sheet, we use the plastic packing. If the clients need special packing will according to their requirements.
- Delivery Time: 45 days
- Payment Terms: L/C, D/A, D/P, T/T, Western Union, MoneyGram
- Supply Ability: 10000 Square Meter/Square Meters per Month



#### Product Specification

- Product Name: Low-cost High Quality Large-scale Prefabricated Steel Structure Warehouse Building Prefab Garages Building Kits In China
- Main Frame: Welded H Steel Beam, Steel Truss
- After-sale Service: Online Technical Support
- Drawing Design: AutoCAD, sketchup
- Project Solution Capability: 3D Model Design, Total Solution For Projects
- Processing Service: Bending, Welding, Decoiling, Cutting, Punching
- Application Fields: Warehouse, Factory, Steel Structure Building
- Purlin: Q235B Q355B Galvanized
- Price Term: FOB CIF CFR EXW

## Product Description

### Low-cost High Quality Large-scale Prefabricated Steel Structure Warehouse Building Prefab Garages Building Kits in China

#### Specifications :

Baodu Prefabricated Steel Structure Building Products:

**Lightweight Steel Structures:** Used for small to medium-sized buildings such as warehouses, factories, and commercial spaces. They are cost-effective, lightweight, and quick to assemble. **Heavy Steel Structures:** Suitable for large-scale buildings like industrial factories, bridges, airports, and stations, these structures have high load-bearing capacities. **Multi-story & High-rise Steel Structures:** These are used in office buildings, residential complexes, and mixed-use developments. They offer seismic resistance and fast construction timelines.

#### Advantages of steel structure buildings:

1. Light weight, high strength, 50years durable use, no construction waste.
2. Cost considering: Time saved, cost saved;
3. Easy move, materials can be recycled used, environmentally;
4. Used widely, used as factory, warehouse, office building, aircraft hangar etc;
5. Structural durabilities, easy maintenance.

#### We can provide :

#### 1. Customization Service



C Type Steel



Z Type Steel



H Type Steel



C Type Purlin



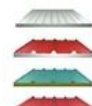
Z Type Purlin



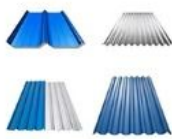
Un-powered Ventilator



Rainwater Pipe



EPS Sandwich Panel



Roof and Wall Panels



Square Tube



Tube



Steel Decking Floor



Steel Gutter



High Strength Bolt



Self-tapping Screw



Sliding Window

#### 2. Strict Quality Inspection

With good quality steel material, we have AWS-D1.1/D1.5 welding quality system and professional CWI welding inspector to ensure high quality of the product.

### **3. Shortest Delivery Time**

We have 2 modern factories and 3 production lines with a total area of 150000 square meters to produce. We guarantee a warehouse of 5000 square meters and delivery within 30 days.

### **4. Production Visualization**

We can provide you with picture, video information of all production links, from raw materials to steel processing, the whole process of visual production. You can even video call us to watch workshop production.

### **5. Packing and Delivery**

Container and pallet packing will protect the surface paint or zinc of the steel structures. In order to facilitate your installation, we will mark each component in sequence according to the drawings.

### **6. Installation Guide**

Installation instruction and video will be provide, we can also send our engineers to your site as installation guide, they

will teach your people how to build project.

### Technical Parameters:



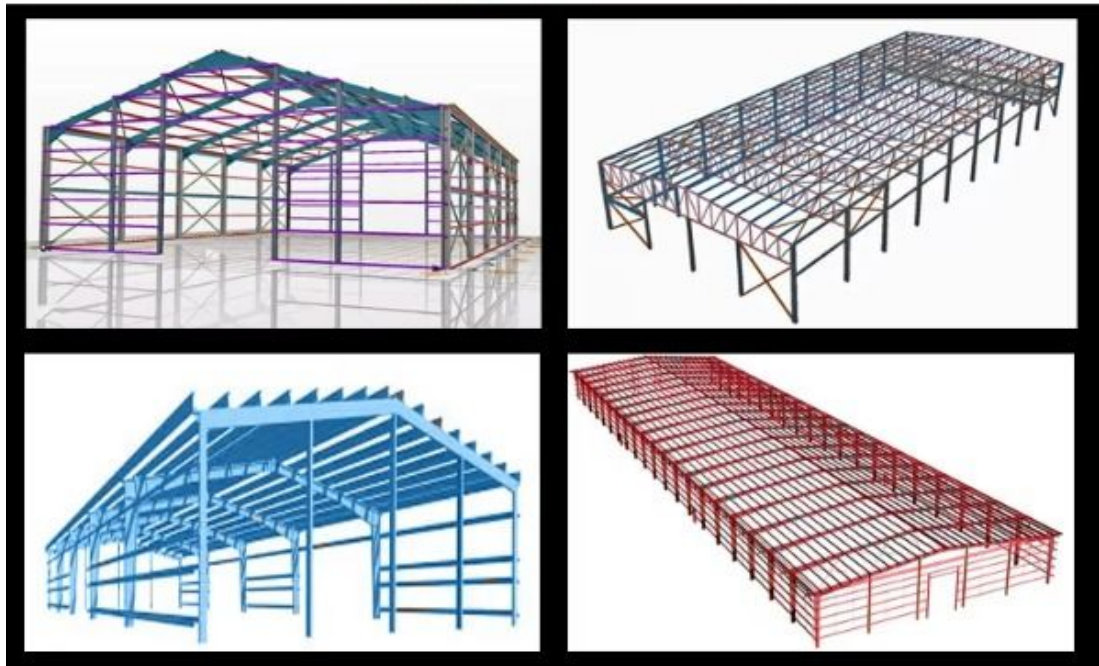
PKPM 2010

3D3S

SAP2000



3DS MAX



Quotation information:

If you are interested in our products, please let us know your requirements for the steel structure project.

1: Location: Which country and region is the building located in.

2: Dimensions: Length \* Width \* Height

3: Wind load: maximum wind speed (kn/m2, km/h, m/s)

4: Snow load (if applicable): maximum snow height (kn/m2, mm)

5: Single layer steel plate mast or sandwich panel mast Do you need insulation materials? If so, it is recommended to use EPS, fiberglass wool, rock wool, and PU sandwich panels. If not, metal steel plates will be very affordable.

6: Seismic grade?

7: Do we need brick walls or not? If so, 1.2 meters high or 1.5 meters high

8: The Q value (unit) and size (width \* height) of doors and windows.

9: Do you need a crane or not? If so, it is the quantity (unit), maximum lifting weight (ton), and maximum lifting height (meter).

10: Are there any other special requirements?

### Production Process:







## Strict Quality Inspection Standards

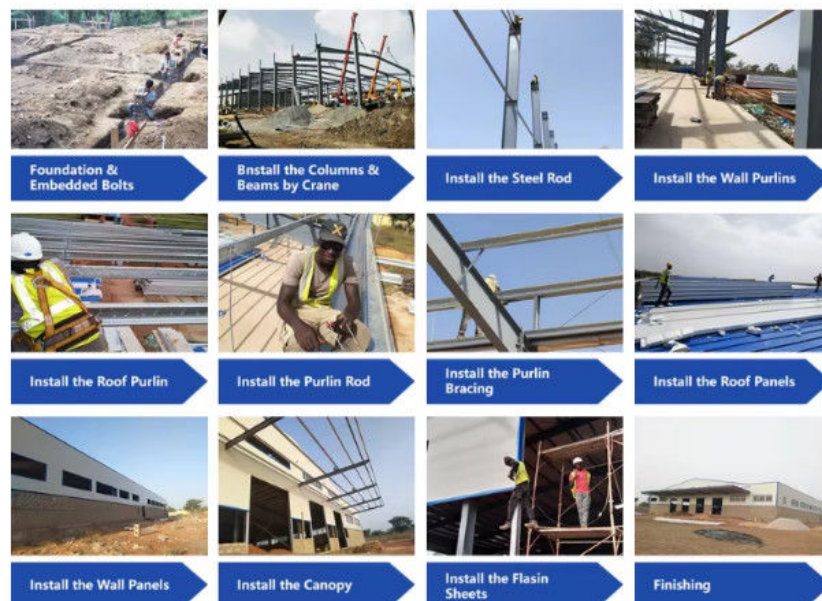


Excellent product quality is our eternal pursuit, and it is also the fundamental reason for us to base ourselves on the global market. BAODU GROUP implements whole-process quality management and strictly supervises every process such as raw material supply, engineering design, steel component manufacturing, installation and construction.

We have established a professional team of quality inspection engineers, introduced internationally leading quality inspection equipment such as German GS1000 vacuum spectrometer and high-frequency infrared carbon sulfur analyzer, established a high-quality product inspection room, and won many awards from China's advanced quality management unit.

In addition, we support testing and certification by SGS, TUV, BV.

## About the installation problems:



Installation plan A: We have the detailed installation drawings for you, you can hire a construction team and according to drawings to install.

Installation plan B: If you need engineer, We can send one engineer to help and guide your workers how to install the buildings.

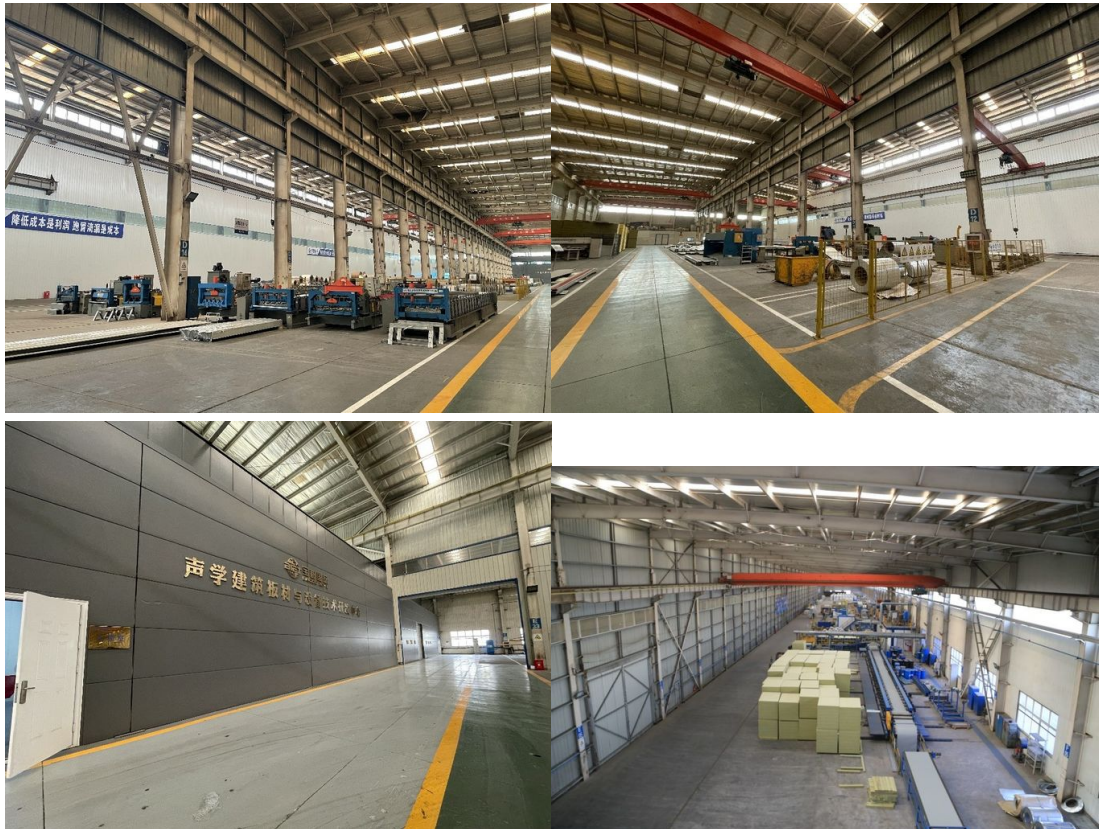
Installation plan C: If you have needs in construction team, we can send engineer & construction team to help you

## Project Cases:





## Our capacity and certification:



## OUR CERTIFICATE



1. We have a group of professional engineers, most of whom has more than 20 years experiences in architecture field. our company has got a various of experiences in design, manufacture, installation and so on. The work staff have excellent skills. Some of them had helped customers to install the warehouse around the world.
2. We will offer one stop service. construction drawing, calculation sheet will be offered to help you get construction permit. Foundation design could be free made if you need. We could make 3D drawings to show the view. What's more, Installation drawings will be offered and Steel structure column, beams will be marked number on it to help you install.
3. We will send you extra bolts, purlins, panels incase any damage when install.

4. Efficiency is our pursuit. Every inquiry ,emails will be replied immediately. Every questions will be paid high attention.

5. We also have possessed more than 40 sets of large precise and domestically advanced processing equipments, including large gantry planing machines, automatic submerged arc welding machines, assembling machines, slitters, shot blasting machines and soon.

6. We will offer details packing list for every container when load so it will be easier to unload.

7. "Moral personality decides product quality." is our guarantee to the products. "Customers come first." is our everlasting pursuit. Believe your choose, we'll give you a satisfied answer.

## Support and Services:



Our Prefab Steel Warehouse product comes with comprehensive technical support and services to ensure your satisfaction and success. Our team of experts is available to assist you with any questions or concerns you may have regarding the product, from initial installation to ongoing maintenance.

Our technical support services include:

Consultation and guidance on product selection and customization options

Assistance with project planning and design

On-site installation supervision and training

Ongoing technical support and troubleshooting

In addition to our technical support services, we also offer a range of other services to enhance the value and performance of our Prefab Steel Warehouse product, including:

Engineering and design services

Project management and coordination

Logistics and shipping services

Maintenance and repair services

With our technical support and services, you can trust that our Prefab Steel Warehouse product will meet your needs and exceed your expectations.

## Company profile:

Baodu International Advanced Construction Material Co., Ltd was established in January 2010 with the office in Beijing and factory in Hebei, China. Baodu is a designer, manufacturer, supplier and exporter of industrial noise comprehensive treatment, steel structure, sandwich panel and prefab house. Baodu has an annual output of 6 million square meters of acoustic sandwich panels, 100000 tons of steel structures and 1 million square meters of floor decking sheet. The products are sold in more than 30 countries and regions around the world. Baodu has a professional design team with more than 10 years' experience, including 5 senior engineers, 20 engineers, and 35 technicians. Baodu has several energy saving and environment protection intellectual property rights, construction and environment protection design qualification, CE certification and Russian GOST certification etc. Baodu participated in the military parade village



project for the 60th anniversary of China and project of Beijing Daxing International Airport. Under the guidance of China's "one belt, one road" strategy, Baodu has also undertaken overseas projects such as the project of Thar,Pakistan coal fired power plant, Hasyan Dubai power plant and so on. Finally, welcome your coming to Baodu for a visit and cooperation!

### Packing and Shipping:



#### **Product Packaging:**

The steel components will be packed in bundles and secured with steel straps.

Bolts, nuts, and other small parts will be packed in boxes.

All packaging materials will be clearly labeled with their contents and quantity.

#### **Shipping:**

The prefab steel warehouse will be shipped in containers or flat racks, depending on the size and weight.

Shipping arrangements will be made by our logistics team and communicated to the customer.

The customer will be responsible for unloading the shipment at the designated delivery location.

The customer should inspect the shipment upon arrival and report any damages or discrepancies to our team within 48 hours.



**Baodu International Advanced Construction Material Co., Ltd.**



+86 13717927965



chunlei.song@baodu.com



baodupanel.com

Room 1101, Building 6, Yard 9, Hongye Road, Daxing District, Beijing