

Steel Frame Shop 500 Square Meter Prefabricated Ready Made Steel Structure Warehouse Building

Our Product Introduction

for more products please visit us on baodupanel.com

Basic Information

- Place of Origin: Hebei, China
- Brand Name: BAODU
- Certification: ISO9001, CE
- Model Number: Steel Warehouse
- Minimum Order Quantity: Discussible
- Price: Reasonable
- Packaging Details: In general, for steel structure, we use the steel frame packing to keep goods not to be broken. For sandwich panel and color steel sheet, we use the plastic packing. If the clients need special packing will according to their requirements.
- Delivery Time: 21 days
- Payment Terms: L/C, D/A, D/P, T/T, Western Union, MoneyGram
- Supply Ability: 10000 Square Meter/Square Meters per Month



Product Specification

- Product Name: Steel Frame Shop 500 Square Meter Prefabricated Ready Made Steel Structure Warehouse Building
- Processing Service: Bending, Welding, Decoiling, Cutting, Punching
- Structure: Steel Structure Frame Welded
- Surface Treatment: Hot Dip Galvanised Or Painted
- Material: Q235/Q345 Steel
- Roof & Wall Panel: Color Steel Veneer, Rockwool Sandwich Panel, PU Sandwich Panel Etc
- Roof Cladding: Steel Color Sheet, Sandwich Panel Glass Wool And Mesh
- Main Frame: Welded H Steel Beam, Steel Truss
- Life Span: Designed For 50 Years

Product Description

Large Span Metal Building Space Prefab Warehouse Workshop Prefabricated Steel Structure



Product Description:

Industrial Factory Prefab Building Light Steel Structure

Baodu Group steel structure workshop has features of high fire resistance, strong corrosion resistance. Steel structure warehouse is mainly refers to the main bearing component is composed of steel.

Including the steel columns, steel beam, steel structure, steel roof truss. Each component using welds, bolts or rivets to connect. The roof and wall can be made of composite panel or veneer. Galvanized sheet metal can prevent rust and corrosion. The use of self-tapping screw can make the connection between the plates more closely, to prevent leakage.

You can also use composite panel for roof and wall. The sandwich is polystyrene, glass fiber, rock wool, polyurethane. They have good thermal insulation, heat insulation, fire-retardant. The wall of the steel structure maintenance also can use brick wall. The cost of a brick wall is higher than galvanized steel roof and wall.

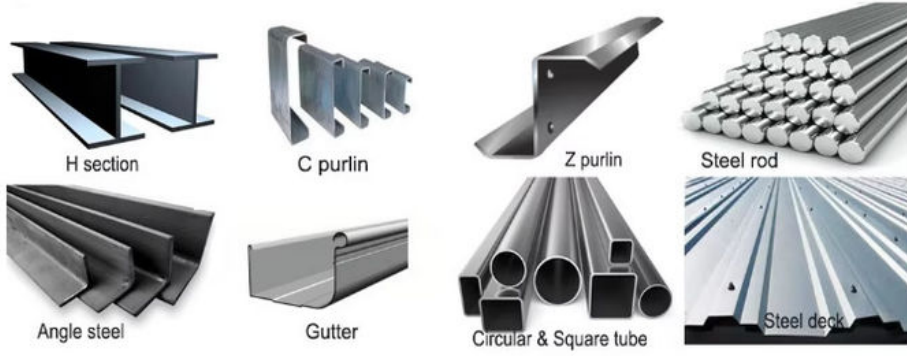
The usage scale includes large-scale workshop, or warehouse, supermarkets, entertainment centers and modular steel structure garage.

Features:

Material List	
Size	According to Customers' Need
Main Steel Structure Frame	
Column	Q235B(ASTM A36,S235JR), Q355B Welded or Hot-Roll H Section Steel
Beam	Q235B, Q355B(ASTM 572,S355JR) Welded or Hot-Roll H Section Steel
Secondary Steel Structure Frame	
Purlin	Q235B, C and Z Type Steel
Knee Brace	Q235B, Angle Steel
Tie Tube	Q235B, Circular Steel Pipe
Brace	Q235B, Round Bar or Angle Steel
Bracing	Q235B, Angle Steel, Round Bar or Steel Pipe
Roof & Wall Material, Door, Window	
Roof & Wall	Metal sheet(PE+Galvanized+Aluminium), Sandwich Panel, Glass wool
Door & Window	Rolling Up/Shutter Door, Sandwich Panel Door, Stainless Steel Door, Fireproof Door; PVC window, Aluminium Window;

Steel Materials List:

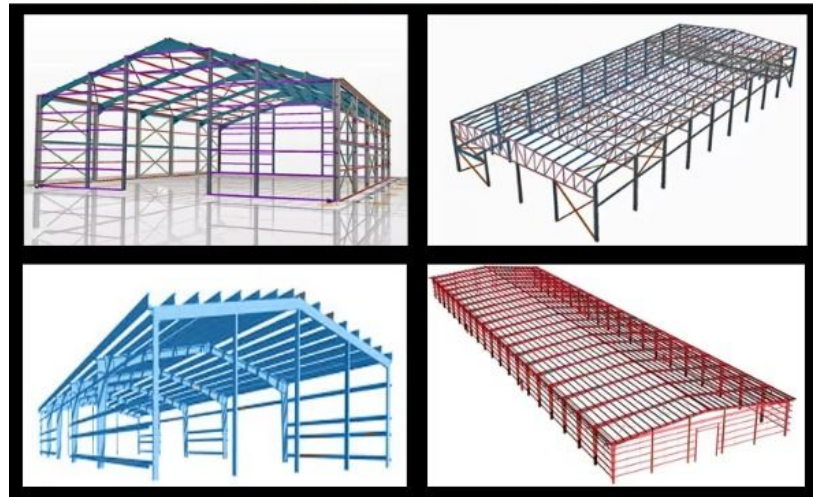
Main frame(column& beam)



Auxiliary system (wall& roof material)



Technical Parameters:



HI, Dear friend, Pls. Attention

Steel structure building is one kind of product which can be design as per every peoples' different need. so, if you found that follows example pictures is not as same as your want, even it is very different. do not worried, no matter which kind of building you need, prefabricated houses, warehouse bigger, smaller or multi-storey, just tell me the data or drawing of building what you need. we will make the exact design, quotation and rendering for you as soon as we can.
(our group have more than 10 years experience on steel structure)

Applications:



When considering the diverse applications of the BAODU Steel Warehouse product, one can envision a multitude of occasions and scenarios where this versatile structure can be utilized. The steel warehouse, workshop, hangar, hall, or any industrial steel structure is an ideal solution for various needs.

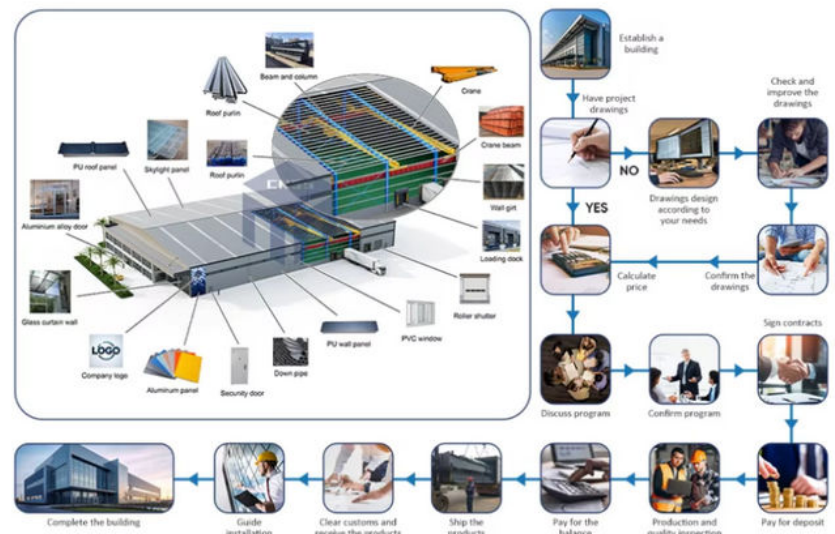
With a reasonable price point and the flexibility of discussing the minimum order quantity, this Steel Warehouse product offers cost-effective solutions for businesses and individuals alike. The packaging details are tailored to ensure the safe delivery of the components, with options for custom packaging based on client requirements.

The main frame of the Steel Warehouse consists of Welded H Steel Beams and Steel Trusses, providing robust support and stability. The surface treatment options of Hot Dip Galvanised or Painted enhance the longevity and aesthetics of the structure.

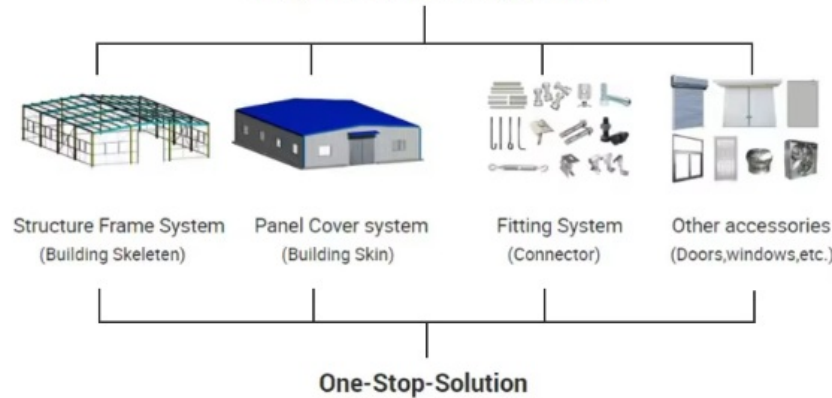
Its steel structure frame welded construction and easy installation process make the Steel Warehouse a practical choice for various

applications. Whether used as a workshop, industrial steel structure, gable frame steel structure, or for other purposes, this product offers a reliable and durable solution.

Customization:



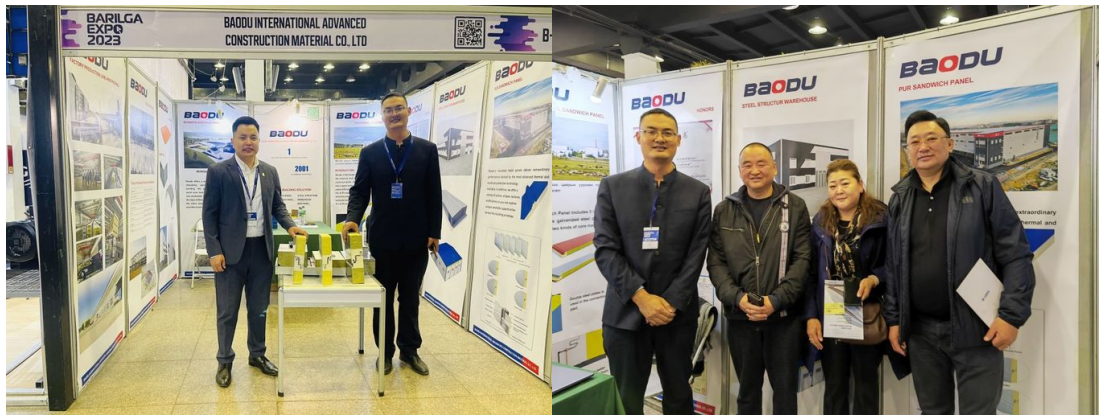
Composition of Building System



- (1) Free design and architectural drawings provided;
- (2) Durability, easy maintenance, designed life span for 50 years;
- (3) Fast and easy assemble, online installation guidance provided;
- (4) Elaborate and strong design, high wind resistance performance;
- (5) Thermal and noise insulation, water proof and fire prevention.

Support and Services:





Our Product Technical Support and Services for the Prefab Steel Warehouse include:

- Assistance with installation and setup of the steel warehouse structure
- Troubleshooting and guidance for any technical issues that may arise
- Providing recommendations for maintenance and care to ensure the longevity of the warehouse
- Offering training sessions for staff on how to utilize the warehouse efficiently
- Continuous support and consultation throughout the lifespan of the steel warehouse

Packing and Shipping:



Product Packaging:

The Prefab Steel Warehouse is carefully packaged to ensure safe transportation and delivery. Each component is securely wrapped and placed in durable containers to prevent damage during shipping.

Shipping Information:

We offer reliable shipping services for the Prefab Steel Warehouse product. Our team works with trusted carriers to ensure timely delivery to your desired location. Please provide accurate shipping details to expedite the process.

FAQ:

Q: What is the brand name of the Prefab Steel Warehouse?

A: The brand name of the Prefab Steel Warehouse is BAODU.

Q: Where is the Prefab Steel Warehouse manufactured?

A: The Prefab Steel Warehouse is manufactured in Hebei, China.

Q: What certifications does the Prefab Steel Warehouse have?

A: The Prefab Steel Warehouse is certified with ISO9001 and CE.

Q: What is the minimum order quantity for the Prefab Steel Warehouse?

A: The minimum order quantity for the Prefab Steel Warehouse is discussible.

Q: What are the packaging details for the Prefab Steel Warehouse?

A: In general, for steel structure, we use steel frame packing to keep goods from being broken. For sandwich panel and color steel sheet, we use plastic packing. Special packing can be arranged according to clients' requirements.

Q: What is the delivery time for the Prefab Steel Warehouse?

A: The delivery time for the Prefab Steel Warehouse is 21 days.

Q: What are the payment terms accepted for the Prefab Steel Warehouse?

A: The payment terms accepted for the Prefab Steel Warehouse are L/C, D/A, D/P, T/T, Western Union, and MoneyGram.

Q: What is the supply ability of the Prefab Steel Warehouse?

A: The supply ability of the Prefab Steel Warehouse is 10000 Square Meter/Square Meters per month.



Baodu International Advanced Construction Material Co., Ltd.



+86 13717927965



chunlei.song@baodu.com



baodupanel.com

Room 1101, Building 6, Yard 9, Hongye Road, Daxing District, Beijing