

## Manufacturers Modular Prefabricated Prefabricated Building Steel Structure Warehouse For Storage

### Our Product Introduction

for more products please visit us on [baodupanel.com](http://baodupanel.com)

#### Basic Information

- Place of Origin: Hebei, China
- Brand Name: BAODU
- Certification: ISO9001, CE
- Model Number: Steel Warehouse
- Minimum Order Quantity: 1000 square meters
- Price: CN¥180-330/square meter
- Packaging Details: In general, for steel structure, we use the steel frame packing to keep goods not to be broken. For sandwich panel and color steel sheet, we use the plastic packing. If the clients need special packing will according to their requirements.
- Delivery Time: 30 days
- Payment Terms: L/C, D/A, D/P, T/T, Western Union, MoneyGram
- Supply Ability: 10000 Square Meter/Square Meters per Month



#### Product Specification

- Product Name: Manufacturers Modular Prefabricated Prefabricated Building Steel Structure Warehouse For Storage
- Warranty: More Than 50 Years
- Main Frame: Welded H Steel Beam, Steel Truss
- Installation: Engineer Guidance
- Surface Treatment: Painting Or Galvanized
- Processing Service: Bending, Welding, Decoiling, Cutting, Punching
- Application Fields: Warehouse, Factory, Steel Structure Building
- Secondary Frame: C&Z Purlin, Brace
- Installation Guide: Installation Drawings And Video
- Foundation: Bolt-Connected Precast Concrete Base
- Design: SAP2000 / AutoCAD / PKPM / 3D3S / TEKLA

## Manufacturers Modular Prefabricated Prefabricated Building Steel Structure Warehouse For Storage

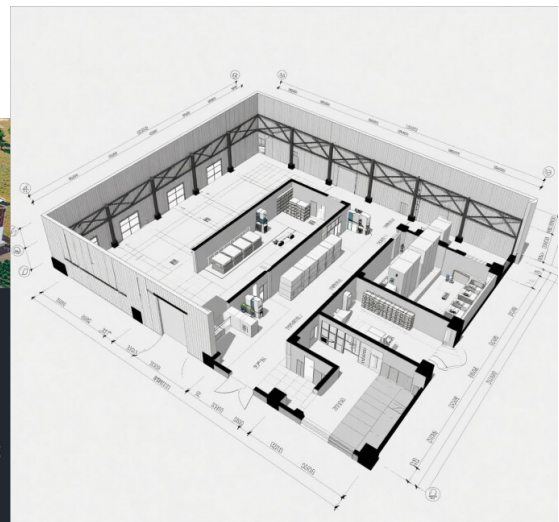
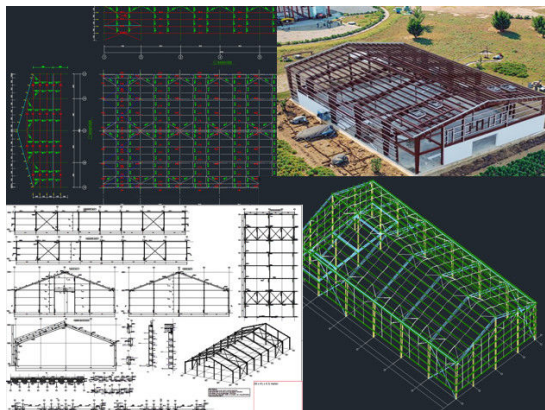


### Features:

Material List	
Size	According to Customers' Need
Main Steel Structure Frame	
Column	Q235B(ASTM A36,S235JR), Q355B Welded or Hot-Roll H Section Steel
Beam	Q235B, Q355B(ASTM 572,S355JR) Welded or Hot-Roll H Section Steel
Secondary Steel Structure Frame	
Purlin	Q235B, C and Z Type Steel
Knee Brace	Q235B, Angle Steel
Tie Tube	Q235B, Circular Steel Pipe
Brace	Q235B, Round Bar or Angle Steel

Bracing	Q235B, Angle Steel, Round Bar or Steel Pipe
Roof & Wall Material, Door, Window	
Roof & Wall	Metal sheet(PE+Galvanized+Aluminium), Sandwich Panel, Glass wool
Door & Window	Rolling Up/Shutter Door, Sandwich Panel Door, Stainless Steel Door, Fireproof Door; PVC window, Aluminium Window;

#### Technical Parameters:



Please kindly inform us of the information below if you are interested in our products.

1. Project Progress: Is Land Purchased? Is it licensed by the government?
2. Usage: for warehouse, workshop, showroom, etc.
3. Location: In which country will it be built?
4. Local Climate: Wind speed, Snow load (max. Wind speed)
5. Design: Please provide the design drawing. Or do you need us to design for you?
6. Dimension: Length\*width\*height
7. Crane Beam: Do you need crane beam inside the steel structure?
8. Roof and Wall: determine the panel material, such as color steel panel, and metal sandwich panel.
9. Windows and Doors: what material, quantity, and type?

#### Steel Materials List:





C Type Steel



Z Type Steel



H Type Steel



C Type Purlin



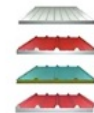
Z Type Purlin



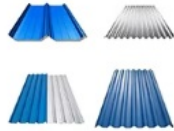
Un-powered Ventilator



Rainwater Pipe



EPS Sandwich Panel



Roof and Wall Panels



Square Tube



Tube



Steel Decking Floor



Steel Gutter



High Strength Bolt

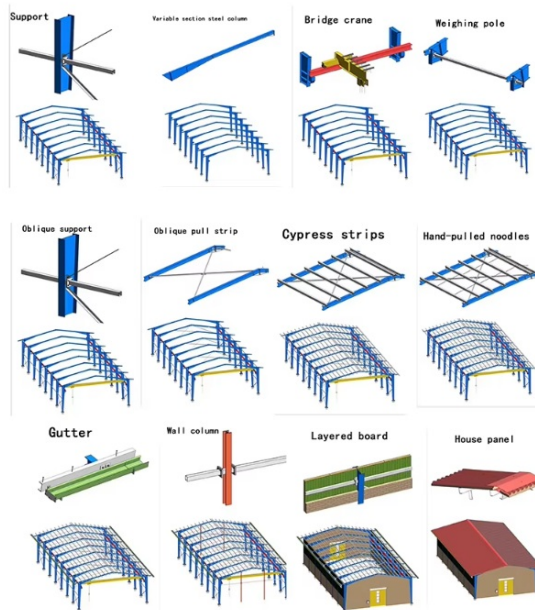


Self-tapping Screw



Sliding Window

## Steel Building Process:



## Project Cases:







Building Purpose:

we will recommend the best design for the purpose of the building.

- A. Warehouse/Storage
- B. Factory
- C. Agriculture Barn
- D. Retail Store
- E. Repair/Mechanic Shop
- F. Office Space
- G. Medical Warehouse
- H. Animal Farm (please confirm what kind of animal)

- Steel Storage Facilities: The BAODU Steel Warehouse is perfect for storing a wide range of items, from raw materials to finished products. Its sturdy construction and secure design make it an excellent choice for keeping goods safe and organized.

- Factory Buildings: The Steel Warehouse can be used as a light steel building for factory operations. Its easy installation process and durable materials ensure that your factory has a strong and reliable structure to support your business activities.

- Logistic Warehouses: For logistics and distribution centers, the BAODU Steel Warehouse offers a spacious and adaptable space for storing and managing goods. Its roof and wall panels, such as color steel veneer and sandwich panels, provide insulation and protection for your inventory.

### Strict Quality Inspection Standards



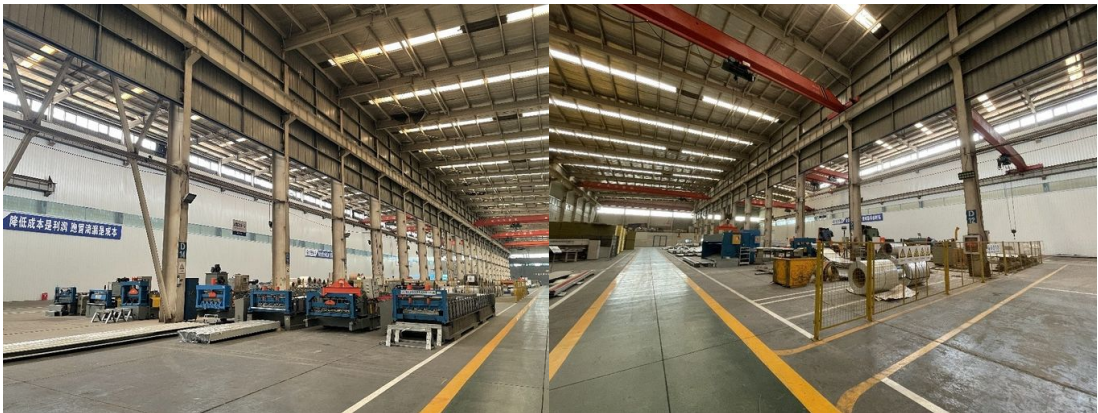


Excellent product quality is our eternal pursuit, and it is also the fundamental reason for us to base ourselves on the global market. BAODU GROUP implements whole-process quality management and strictly supervises every process such as raw material supply, engineering design, steel component manufacturing, installation and construction.

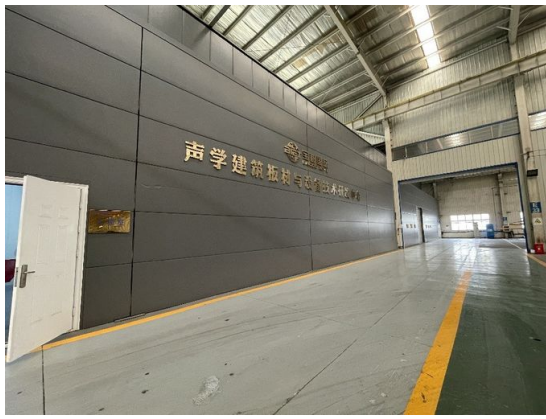
We have established a professional team of quality inspection engineers, introduced internationally leading quality inspection equipment such as German GS1000 vacuum spectrometer and high-frequency infrared carbon sulfur analyzer, established a high-quality product inspection room, and won many awards from China's advanced quality management unit.

In addition, we support testing and certification by SGS, TUV, BV.

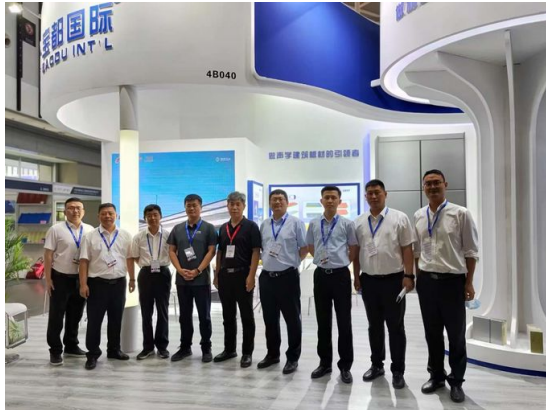
### Our capacity and certification:







## Support and Services:



## Company profile:

Baodu International Advanced Construction Material Co., Ltd was established in January 2010 with the office in Beijing and factory in Hebei, China. Baodu is a designer, manufacturer, supplier and exporter of industrial noise comprehensive treatment, steel structure, sandwich panel and prefab house. Baodu has an annual output of 6 million square meters of acoustic sandwich panels, 100000 tons of steel structures and 1 million square meters of floor decking sheet. The products are sold in more than 30 countries and regions around the world. Baodu has a professional design team with more than 10 years' experience, including 5 senior engineers, 20 engineers, and 35



technicians. Baodu has several energy saving and environment protection intellectual property rights, construction and environment protection design qualification, CE certification and Russian GOST certification etc. Baodu participated in the military parade village project for the 60th anniversary of China and project of Beijing Daxing International Airport. Under the guidance of China's "one belt, one road" strategy, Baodu has also undertaken overseas projects such as the project of Thar, Pakistan coal fired power plant, Haysan Dubai power plant and so on. Finally, welcome your coming to Baodu for a visit and cooperation!

## Packing and Shipping:



### Packaging Details :

1. Steel structure components will be in packaging with proper protection.
2. Sandwich panels will be covered with plastic film.
3. Bolts and other accessories will be loaded into wooden Boxes

All the structure components, panels, bolts and sorts of accessories will be well packed with standard package suitable for ocean transport and loaded into 40'HQ.

All the products are loaded at the loading site of our factory using crane and forklift by our skilled workers, who will prevent the goods to be damaged.

Good relationship with many vessel companies to make sure the transportation smooth

## FAQ

Q1: What are the benefits of steel construction?

- A: 1-Durable and with long lifespan.  
2-Short construction period than concrete and wooden building.  
3-Low cost and reusable.  
4-High strength and light weight, has good seismic performance.  
5-Widely used for multi-purpose buildings.

Q2: What is your terms of payment?

A: L/C and T/T

Q3: What's the quality assurance you provided and how do you control quality?

A: Established a procedure to check products at all stages of the manufacturing process - raw materials, in process materials, validated or tested materials, finished goods, etc. We accept customers to inspect the goods at the factory and provide steel structure inspection reports for each batch of goods

Q4: How to pack the products?

- A: 1- Steel structure components will be in packaging with proper protection.  
2- Sandwich panels will be covered with plastic film.  
3- Bolts and other accessories will be loaded into steel Boxes  
4- All the structure components, panels, bolts and sorts of accessories will be well packed with standard package suitable for ocean transport and loaded into 40'HQ.  
5- All the products are loaded at the loading site of our factory using crane and forklift by our skilled workers, who will prevent the goods to be damaged.

Q5: Do you offer guiding installation on site overseas for the buildings?

A: Yes, we can provide the service of installation, supervision and training by extra. We can send our professional technical engineer to supervise installation on site overseas. They have succeeded in many countries such as USA, Dubai, South Africa, Algeria, and Ghana.



**Baodu International Advanced Construction Material Co., Ltd.**



+86 13717927965



chunlei.song@baodu.com



baodupanel.com

Room 1101, Building 6, Yard 9, Hongye Road, Daxing District, Beijing