

## Large Scale Multi Span Logistics Prefabricated Warehouse Building

Our Product Introduction

for more products please visit us on [baodupanel.com](http://baodupanel.com)

### Basic Information

- Place of Origin: Hebei, China
- Brand Name: BAODU
- Certification: ISO9001, CE
- Model Number: Steel Warehouse
- Minimum Order Quantity: 300 square meters
- Price: \$28-36 square meter
- Packaging Details: In general, for steel structure, we use the steel frame packing to keep goods not to be broken. For sandwich panel and color steel sheet, we use the plastic packing. If the clients need special packing will according to their requirements.
- Delivery Time: 30 days
- Payment Terms: L/C, D/A, D/P, T/T, Western Union, MoneyGram
- Supply Ability: 10000 Square Meter/Square Meters per Month



### Product Specification

- Product Name: Low Price Large-scale Multi-span Logistics Warehouse Prefabricated Steel Frame Warehouse
- Warranty: 50 - 100 Year
- Main Frame: Welded H Steel Beam, Steel Truss
- Installation: Engineer Guidance
- Surface Treatment: Painting Or Galvanized
- Processing Service: Bending, Welding, Decoiling, Cutting, Punching
- Application Fields: Warehouse, Factory, Steel Structure Building
- Design Style: Modern
- Environmental Impact: Eco-friendly
- Frame: Weld Steel Structure Frame
- Secondary Frame: C&Z Purlin, Brace

## Product Description

### Low Price Large-scale Multi-span Logistics Warehouse Prefabricated Steel Frame Warehouse

#### Features:



Structure	Part	Specification
Main Structure	Frame Column and Beam	Q355B H/I Section & As drawings
	Welding	Automatic Submerged Arc Welding
	Rust Removing	Shot Blasting
	Surface Processing	Coating or Galvanized
	High Strength Bolt	Grade 10.9
Secondary Structure	Purlin	C/Z Purlin Size from C120-C320,Z100~Z300,
	Angle Brace	Q235B L-Steel
	Cross Brace/X Brace	Q235B Round Pipe
	Tie Bar	Q235B Round Bar
Roof System	Roofing Material	Sandwich Panel-Insulated PU/Glasswool/Rock Wool/EPS 50mm-200mm
	Skylight Panel	1.2mm FRP
	Gutter	Steel Gutter Galvanized/Coated 2.0mm-3.0mm
	Rainspout/Down Pipe	PVC Pipe
Wall System	Wall Material	Sandwich Panel-Insulated PU/Glasswool/Rock Wool/EPS 50mm-200mm
	Accessories	Sealant, Self-tapping Screw etc
	Edge Cover	Color Steel
Ventilator	Unpowered Axial-Flow Ventilator or Monitor Roof	Customizable
Door	Electric Rolling Door/Sliding Door/Access Side Door	Customizable
Window	Aluminum/PVC	Customizable
Crane	1-200 T	Customizable

Steel structure building is new type building structure, structure formed by steel column, beam, bracing and purlin, all the components are prefabricated manufactured in workshop and ready for assembling, wall and roof materials could use Single color sheet or sandwich panel, all the steel structure components connected by bolt, easy installation and quickly finished A steel structure warehouse is a building or storage facility made mostly with steel components, featuring high strength, durability, quick and easy construction, large clear spans, and customizability. It's commonly used to store different industries' goods, equipment, or materials.

### Advantages of steel structure buildings:

#### 1.High Strength-to-Weight Ratio:

Reduces foundation size and cost; enables the construction of super-tall buildings and long-span structures (stadiums, airports, large factories, bridges); less demanding on soil bearing capacity.

#### 2.Excellent Ductility and Toughness:

Provides outstanding seismic (earthquake) resistance. During an earthquake, the structure can deform plastically to absorb seismic energy, preventing catastrophic collapse and enhancing occupant safety.

#### 3.High Degree of Prefabrication & Faster Construction:

Significantly shorter project schedules (can reduce time by 30%-50%), leading to faster return on investment; minimizes wet trades, construction waste, noise, and dust pollution on site; improves overall construction quality control.

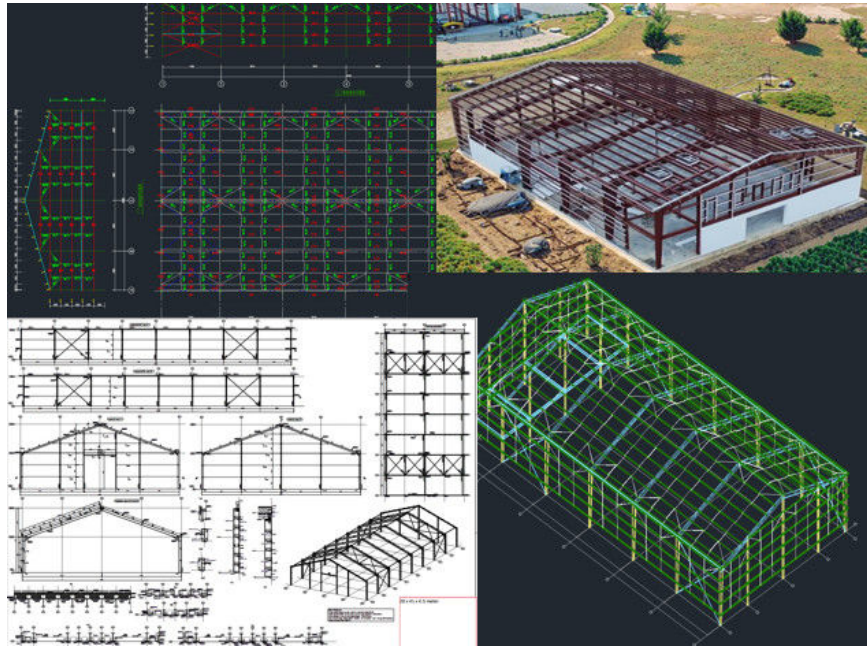
#### 4.Slimmer Members & Increased Usable Space:

Creates more usable floor area and higher clear ceiling heights within the same building footprint (allowing for larger column-free bays and shallower floor depths); offers greater flexibility in architectural layout and space planning.

#### 5.Material Homogeneity & Predictable Performance:

Structural calculations and models closely match real-world behavior, resulting in highly reliable design outcomes; material quality is easier to control and inspect through standardized testing methods.

### Technical Parameters:

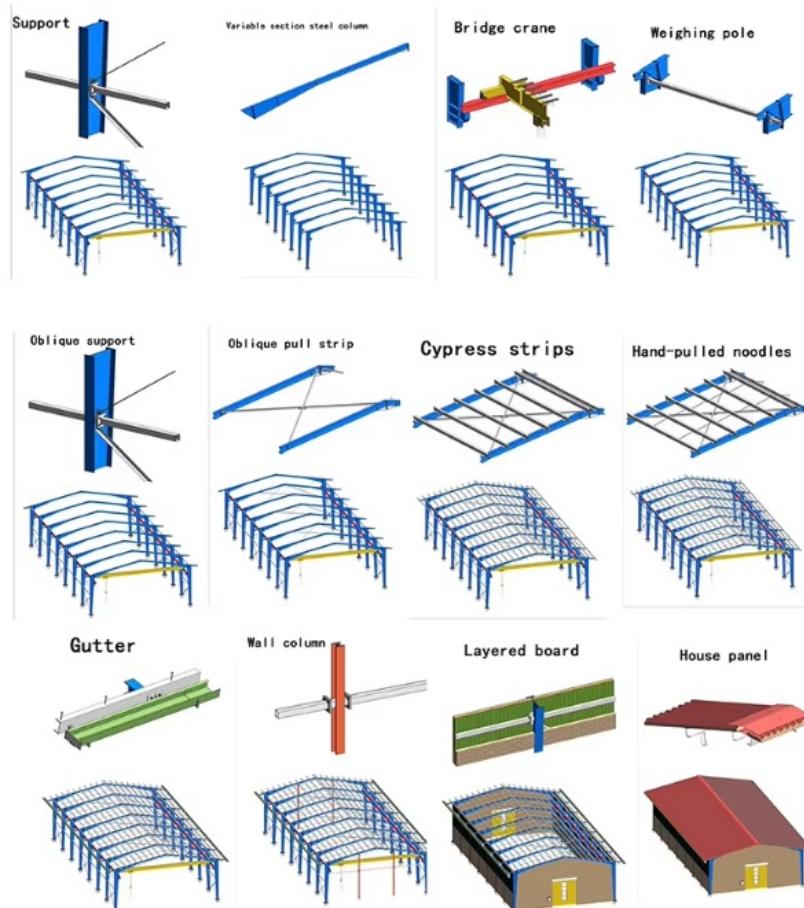


Please kindly inform us of the information below if you are interested in our products.

1. **Project Progress:** Is Land Purchased? Is it licensed by the government?
2. **Usage:** for warehouse, workshop, showroom, etc.
3. **Location:** In which country will it be built?
4. **Local Climate:** Wind speed, Snow load (max. Wind speed)
5. **Design:** Please provide the design drawing. Or do you need us to design for you?
6. **Dimension:** Length\*width\*height
7. **Crane Beam:** Do you need crane beam inside the steel structure?
8. **Roof and Wall:** determine the panel material, such as color steel panel, and metal sandwich panel.
9. **Windows and Doors:** what material, quantity, and type?

### Steel Building Process:





## Project Cases:











Steel structure buildings serve a wide range of purposes, including warehouses, workshops, factories, cold storage facilities, high-rise buildings, shopping malls, power plants, distribution centers, pedestrian bridges, steel-structured hotels, prefabricated public schools, sports arenas and halls, car parking centers, airplane hangars and aviation facilities, church buildings and community centers, poultry farms, agricultural buildings and barns, storage sheds, self-storage buildings, greenhouses, garages, commercial buildings, industrial facilities, and much more.

### Strict Quality Inspection Standards

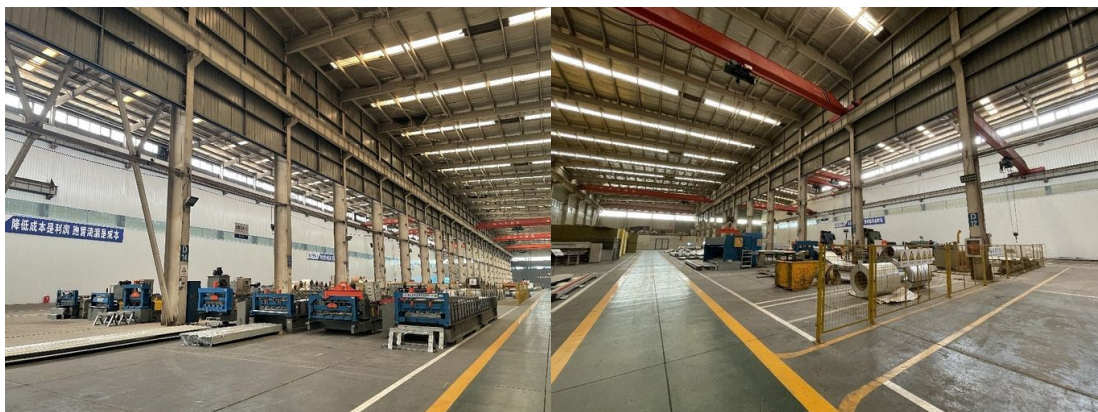


Excellent product quality is our eternal pursuit, and it is also the fundamental reason for us to base ourselves on the global market. BAODU GROUP implements whole-process quality management and strictly supervises every process such as raw material supply, engineering design, steel component manufacturing, installation and construction.

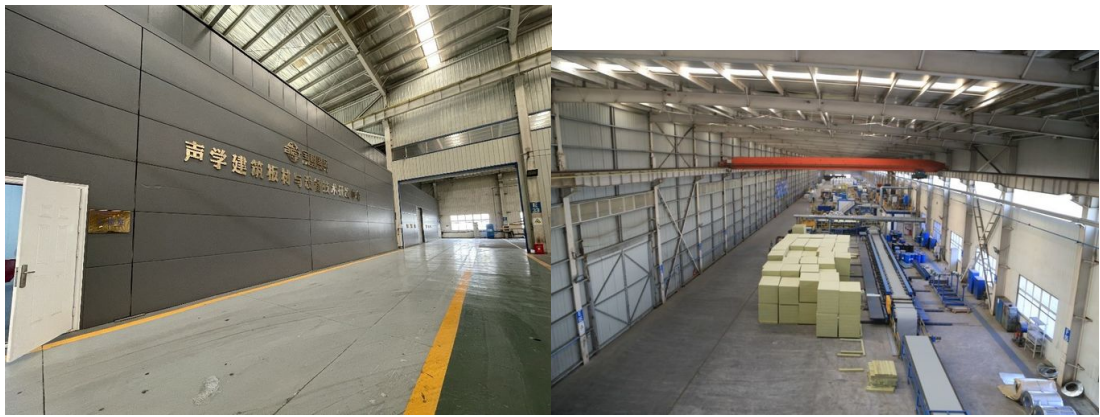
We have established a professional team of quality inspection engineers, introduced internationally leading quality inspection equipment such as German GS1000 vacuum spectrometer and high-frequency infrared carbon sulfur analyzer, established a high-quality product inspection room, and won many awards from China's advanced quality management unit.

In addition, we support testing and certification by SGS, TUV, BV.

### Our capacity and certification:







## OUR CERTIFICATE



1. We have a group of professional engineers, most of whom has more than 20 years experiences in architecture field. our company has got a various of experiences in design, manufacture, installation and so on. The work staff have excellent skills. Some of them had helped customers to install the warehouse around the world.
2. We will offer one stop service. construction drawing, calculation sheet will be offered to help you get construction permit. Foundation design could be free made if you need. We could make 3D drawings to show the view. What's more, Installation drawings will be offered and Steel structure column, beams will be marked number on it to help you install.
3. We will send you extra bolts, purlins, panels incase any damage when install.
4. Efficiency is our pursuit. Every inquiry ,emails will be replied immediately. Every questions will be paid high attention.
5. We also have possessed more than 40 sets of large precise and domestically advanced processing equipments, including large gantry planing machines, automatic submerged arc welding machines, assembling machines, slitters, shot blasting machines and soon.
6. We will offer details packing list for every container when load so it will be easier to unload.
7. "Moral personality decides product quality." is our guarantee to the products. "Customers come first." is our everlasting pursuit. Believe your choose, we'll give you a satisfied answer.

## Support and Services:



### Company profile:

Baodu International Advanced Construction Material Co., Ltd was established in January 2010 with the office in Beijing and factory in Hebei, China. Baodu is a designer, manufacturer, supplier and exporter of industrial noise comprehensive treatment, steel structure, sandwich panel and prefab house. Baodu has an annual output of 6 million square meters of acoustic sandwich panels, 100000 tons of steel structures and 1 million square meters of floor decking sheet. The products are sold in more than 30 countries and regions around the world. Baodu has a professional design team with more than 10 years' experience, including 5 senior engineers, 20 engineers, and 35 technicians. Baodu has several energy saving and environment protection intellectual property rights, construction and environment protection design qualification, CE certification and Russian GOST certification etc. Baodu participated in the military parade village project for the 60th anniversary of China and project of Beijing Daxing International Airport. Under the guidance of China's "one belt, one road" strategy, Baodu has also undertaken overseas projects such as the project of Thar, Pakistan coal fired power plant, Hasyan Dubai power plant and so on. Finally, welcome your coming to Baodu for a visit and cooperation!

### Packing and Shipping:





**Packaging Details :**

1. Steel structure components will be in packaging with proper protection.
2. Sandwich panels will be covered with plastic film.
3. Bolts and other accessories will be loaded into wooden Boxes

All the structure components, panels, bolts and sorts of accessories will be well packed with standard package suitable for ocean transport and loaded into 40'HQ.

All the products are loaded at the loading site of our factory using crane and forklift by our skilled workers, who will prevent the goods to be damaged.

Good relationship with many vessel companies to make sure the transportation smooth



**Baodu International Advanced Construction Material Co., Ltd.**



+86 13717927965



chunlei.song@baodu.com



baodupanel.com

Room 1101, Building 6, Yard 9, Hongye Road, Daxing District, Beijing