

Carbon Prefab Warehouse Steel Structure Architectural Design Production As Well As Installation

Our Product Introduction

for more products please visit us on baodupanel.com

Basic Information

- Place of Origin: Hebei, China
- Brand Name: BAODU
- Certification: ISO9001, CE
- Model Number: Steel Warehouse
- Minimum Order Quantity: 300 square meters
- Price: \$30-50 square meter
- Packaging Details: In general, for steel structure, we use the steel frame packing to keep goods not to be broken. For sandwich panel and color steel sheet, we use the plastic packing. If the clients need special packing will according to their requirements.
- Delivery Time: 15-21 days
- Payment Terms: L/C, D/A, D/P, T/T, Western Union, MoneyGram
- Supply Ability: 10000 Square Meter/Square Meters per Month



Product Specification

- Product Name: Prefab Warehouse Steel Structure Architectural Design Production As Well As Installation Carbon Steel Structure
- Type: Steel Structure
- Keyword: Steel Structure Building Warehouse
- Weather Resistance: High
- Main Frame: Solid H-shape Steel Beam
- Installation: Engineer Guidance
- Purlin: C/Z Galvanized Steel
- Drawing Design: Customers' Request
- Window: Sliding Window, PVC Window Or Aluminium Window
- Secondary Frame: C&Z Purlin, Brace
- Processing Service: Bending, Welding, Drilling, Cutting

Product Description

Prefab Warehouse Steel Structure Architectural Design Production As Well As Installation Carbon Steel Structure

Product Description:

Baodu steel structure warehouse has features of high fire resistance, strong corrosion resistance. Steel structure warehouse is mainly composed of steel, including the steel columns, steel beam, steel structure, steel roof truss. Each component using welds, bolts or rivets to connect.

The roof and wall can be made of composite panel or veneer. Galvanized sheet metal can prevent rust and corrosion. The use of self-tapping screw can make the connection between the plates more closely, to prevent leakage. You can also use composite panel for roof and wall. The sandwich is polystyrene, glass fiber, rock wool, polyurethane. They have good thermal insulation, heat insulation, fire-retardant. The wall of the steel structure maintenance also can use brick wall. The cost of a brick wall is higher than galvanized steel roof and wall.

The usage scale includes large-scale workshop, or warehouse, supermarkets, entertainment centers and modular steel structure garage.

Features:

Items		Specification
Main steel structure	Column	Q235, Q355 Welded H Section Steel
	Beam	Q235, Q355 Welded H Section Steel
Secondary Frame	Purlin	Q235 C and Z purlin
	Knee Brace	Q235 Angle Steel
	Tie Rod	Q235 Circular Steel Pipe
	Brace	Q235 Round Bar
Maintenance System	Roof Panel	EPS/Glass fiber /Rock wool sandwich panel
	Wall Panel	Sandwich panel/ Corrugated Steel sheet
Accessories	Window	Aluminium alloy window/ PVC window/Sandwich panel window
	Door	Sliding sandwich panel door/Rolling metal door/Personal door
Structure Usage		Up to 70 years
Finishing Options		Vast array of color and texture available

We can provide :

1. Customization Service

We have a professional design team about 20 people, with 10 years design experience. We can meet your individual needs.

And multi-type steel components, roof and wall panels, doors and windows for choosing.

Drawing Design

We need the following information to make a design for you: the specifications and use of the steel building, thermal and lighting conditions, window and door requirements, wind/snow load, and whether it has a crane.

1 Location (where will be built?) _____country, area

2 Size: Length*width*height _____mm*_____mm*_____mm

3 wind load (max. Wind speed) _____kn/m2, _____km/h, _____m/s

4 snow load (max. Snow height)_____kn/m2, _____mm

5 anti-earthquake _____level

6 brickwall needed or not If yes, 1.2m high or 1.5m high

7 thermal insulation If yes, EPS, fiberglass wool, rockwool, PU sandwich panels will be suggested; If not, the metal steel sheets

will be ok. The cost of the latter will be much lower than that of the former.

8 door quantity & size _____units, _____(width)mm*_____(height)mm

9 window quantity & size _____units, _____(width)mm*_____(height)mm

10 crane needed or not If yes, _____units, max. Lifting weight_____tons; Max. Lifting height _____m.

Models Design

Our company offers full design and detailing services to every customer.(PKPM, AutoCAD, Tekla).And our design team turns your requirements into clear drawings, offer 3D drawings for installation guidance, and ensures every detail is easily understandable.

2. Strict Quality Inspection

With good quality steel material, we have AWS-D1.1/D1.5 welding quality system and professional CWI welding inspector to ensure high quality of the product.

3. Shortest Delivery Time

We have 2 modern factories and 3 production lines with a total area of 150000 square meters to produce. We guarantee a warehouse of 5000 square meters and delivery within 30 days.

4. Production Visualization

We can provide you with picture, video information of all production links, from raw materials to steel processing, the whole process of visual production. You can even video call us to watch workshop production.

5. Packing and Delivery

Container and pallet packing will protect the surface paint or zinc of the steel structures. In order to facilitate your installation, we will mark each component in sequence according to the drawings.

6. Installation Guide

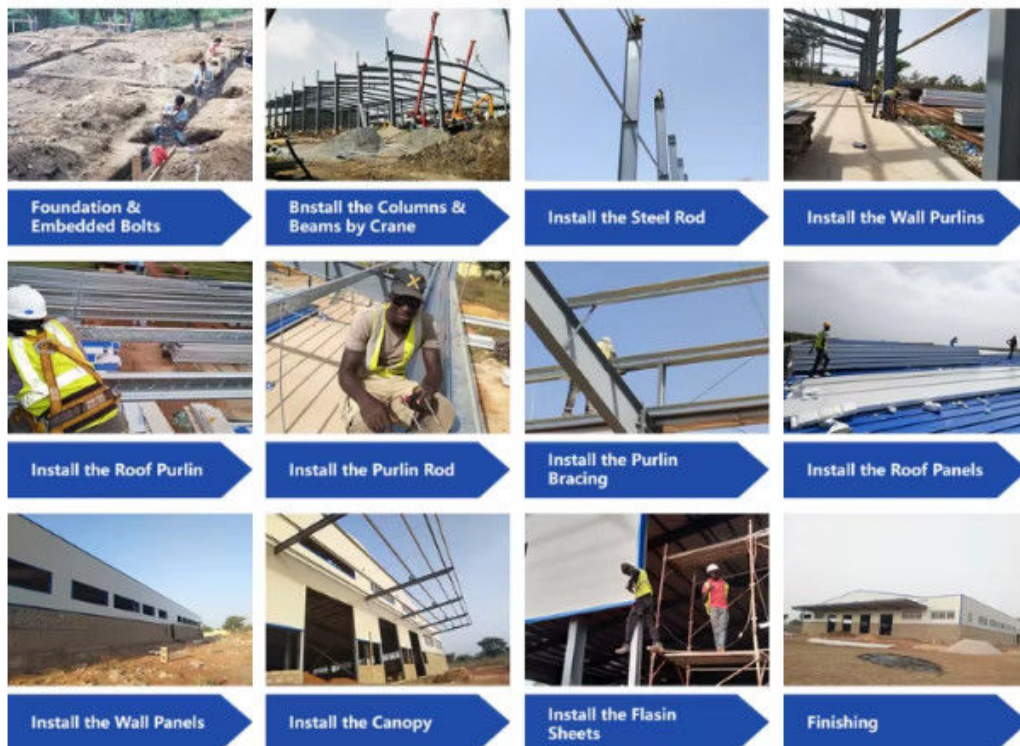
Installation instruction and video will be provide, we can also send our engineers to your site as installation guide, they will teach your people how to build project.

Advantages:

Steel structure is a building structure system composed of steel materials, it is one of the main building structure types, widely used in high-rise buildings, Bridges, aerospace facilities, industrial plants and other fields. The characteristics and application areas of steel structure are as follows: High material strength, light weight: the high strength and low density of steel make the steel structure have smaller component section size under the same stress conditions, thereby reducing the building's own weight and improving the stability and safety of the structure.

1. Fast construction speed: Because the steel structure can be assembled with prefabricated parts on site, the construction period of the steel structure project is shorter and the construction efficiency is improved.
2. Recyclable: Steel can reduce resource consumption through recycling, reduce the generation of construction waste, and contribute to environmental protection.
3. Good seismic performance: the plastic deformation ability and good ductility of steel make it able to effectively absorb energy in the case of earthquakes and other disasters and reduce the damage to buildings.
4. Wide range of application: steel structure is suitable for many types of projects, such as high-rise buildings, Bridges, aerospace facilities, industrial plants, etc. However, the steel structure also has some potential problems that need attention, such as easy rust, the need for regular maintenance, and the possibility of oxidative degradation at high temperatures.

Installation scene:



Applications:



Steel structure warehouse



Steel structure factory building



Steel structure building



Steel structure garage/hangar



Steel structure house



Steel structure livestock house

- 1) Moisture and heat resistance, waterproof and fireproof.
- 2) It can be freely lifted, fixed and combined.
- 3) Convenient transportation, cheap price and cost saving.
- 4) It is easy to assemble and disassemble, and it will not be damaged many times.
- 5) The service life is more than 50 years.
- 6) We provide remote online installation, supervision and training services. For major projects, we will conduct on-site guidance, installation and post-maintenance.
- 7) Prefabricated houses, offices, warehouses, workshops, greenhouses, workshops, garages, cold storages, container houses, hotels, toilets, etc...

Project Cases:



Gas Turbine Combined Cycle Power Station Expansion Project in Basra Iraq



Clean Coal Fired Power Plant Phase I (4x600mw net) Project in Hasyan Dubai

Our capacity and certification:



Support and Services:



Our team of experts is available to provide technical support and services for the Prefab Steel Warehouse product.

We offer:

Consultations to help you determine the best solutions for your needs

Customized design services to ensure the warehouse meets your specific requirements

Quality control inspections throughout the production process

On-site installation and assembly services

Maintenance and repair services to keep your warehouse in top condition

Our goal is to provide our customers with reliable, durable, and cost-effective solutions for their storage needs. Contact us for more information on our technical support and services.

Why Choose Us to offer steel structure building:

1. We have a group of professional engineers, most of whom has more than 20 years experiences in architecture field. our company has got a various of experiences in design, manufacture, installation and so on. The work staff have excellent skills. Some of them had helped customers to install the warehouse around the world.
2. We will offer one stop service. construction drawing, calculation sheet will be offered to help you get construction permit. Foundation design could be free made if you need. We could make 3D drawings to show the view. What's more, Installation drawings will be offered and Steel structure column, beams will be marked number on it to help you install.
3. We will send you extra bolts, purlins, panels incase any damage when install.
4. Efficiency is our pursuit. Every inquiry ,emails will be replied immediately. Every questions will be paid high attention.
5. We also have possessed more than 40 sets of large precise and domestically advanced processing equipments, including large gantry planing machines, automatic submerged arc welding machines, assembling machines, slitters, shot blasting machines and soon.
6. We will offer details packing list for every container when load so it will be easier to unload.
7. "Moral personality decides product quality." is our guarantee to the products. "Customers come first." is our everlasting pursuit. Believe your choose, we'll give you a satisfied answer.

Company profile:

Baodu International Advanced Construction Material Co., Ltd was established in January 2010 with the office in Beijing and factory in Hebei, China. Baodu is a designer, manufacturer, supplier and exporter of industrial noise comprehensive treatment, steel structure, sandwich panel and prefab house. Baodu has an annual output of 6 million square meters of acoustic sandwich panels, 100000 tons of steel structures and 1 million square meters of floor decking sheet. The products are sold in more than 30 countries and regions around the world. Baodu has a professional design team with more than 10 years' experience, including 5 senior engineers, 20 engineers, and 35 technicians. Baodu has several energy saving and environment protection intellectual property rights, construction and environment protection design qualification, CE certification and Russian GOST certification etc. Baodu participated in the military parade village project for the 60th anniversary of China and project of Beijing Daxing International Airport. Under the guidance of China's "one belt, one road" strategy, Baodu has also undertaken overseas projects such as the project of Thar, Pakistan coal fired power plant, Hasyan Dubai power plant and so on. Finally, welcome your coming to Baodu for a visit and cooperation!

Packing and Shipping:



Product Packaging:

The prefabricated steel warehouse will be packaged in sturdy box to prevent any damage during transportation. All components will be carefully wrapped and secured to ensure safe delivery.

Shipping:

The product will be shipped via truck or container, depending on the size of the order and the destination.

Shipping fees will be calculated based on the distance and weight of the order.

Delivery times may vary depending on the destination and shipping method.

Customers will be provided with a tracking number to monitor the status of their shipment.

FAQ:

1.What's your common type of industrial building?

Reply: Portal frame is the usual type in the industrial workshop and warehouse shed. Other types also could be designed and manufacturer as per clients' request.

2.What's the quality grade of your steel structure components?

Reply: Q345 is used for main steel structure, Q235 is used for secondary steel structure.

3.How about the delivery time?

Reply: Usually, 45 days after the order confirmed, also depends on the fabrication arrangement.

4.Are you factory or trading company?

Reply: We are manufacture factory. And you are welcomed to visit us for inspection. The quality control flow will show you our professional. Also you will enjoy the best price and competitive price.

5.What kind panel used for the roof and wall?

Reply: Color corrugated steel sheet and sandwich panel could be used. Sandwich panel performs well on the heat insulation, sound insulation. Common sandwich materials are EPS, glass wool and PU.

6. Do you offer designing service for us?

Reply: Yes, we could design full solution drawings as your requirements. They use software such as Auto CAD, PKPM, MTS, 3D3S, etc.we will be glad to establish sincere business cooperation with you in the near future.

7. How can you get a quotation for your projects?

Reply: You can chat with us anytime by just answering us some simple questions let us know your demand such as usage, storeys, roof type, width, length, height, wind/snow load, earthquake grade, fire proof grade, panel requirement, window and doorrequirement. We will give you the best quotation ASAP. Thanks for your kind cooperation.



Baodu International Advanced Construction Material Co., Ltd.



+86 13717927965



chunlei.song@baodu.com



baodupanel.com

Room 1101, Building 6, Yard 9, Hongye Road, Daxing District, Beijing