



## Building Office Construction Material Steel Structure Building Structural Steel

### Our Product Introduction

for more products please visit us on [baodupanel.com](http://baodupanel.com)

#### Basic Information

- Place of Origin: Hebei, China
- Brand Name: BAODU
- Certification: ISO9001, CE
- Model Number: Steel Warehouse
- Minimum Order Quantity: 20 Ton
- Price: \$34-50 square meter
- Packaging Details: In general, for steel structure, we use the steel frame packing to keep goods not to be broken. For sandwich panel and color steel sheet, we use the plastic packing. If the clients need special packing will according to their requirements.
- Delivery Time: 45 days
- Payment Terms: L/C, D/A, D/P, T/T, Western Union, MoneyGram
- Supply Ability: 10000 Square Meter/Square Meters per Month



#### Product Specification

- Product Name: Building Office Construction Material Steel Structure Building Structural Steel
- Warranty: 50 - 100 Year
- Main Frame: Welded H Steel Beam, Steel Truss
- After-sale Service: Online Technical Support
- Design Style: Modern
- Drawing Design: AutoCAD, sketchup
- Project Solution Capability: 3D Model Design, Total Solution For Projects
- Processing Service: Bending, Welding, Decoiling, Cutting, Punching
- Application Fields: Warehouse, Factory, Steel Structure Building
- Color: Customized Color
- Size: Customization Size

## Product Description

### Building Office Construction Material Steel Structure Building Structural Steel

#### Products Description:

The steel structure warehouse building designed by baodu Steel provides customers with ideal storage and cargo management solutions. With the steel structure warehouse building, customers can choose from a variety of structures, ranging from simple two-bay warehouses to large industrial and commercial buildings. The steel frame of this prefab warehouse is unique in that it can be built within a short period of time without any trouble involved. Furthermore, this kind of storage center benefits from extremely low maintenance costs and can withstand even harsh weather conditions.

Steel structure warehouse building is structural frames made of primary steel columns, beam, and secondary structure, which can be used as enclosures to accommodate electrical and plumbing facilities. One main concept of steel structure warehouse buildings is that they use a wide span, so a single bay space can be divided into multiple small rooms without having an outer column for support. That advantage will save the construction cost, which is especially suitable for large warehouses and huge factories since it takes up less land than traditional construction methods.

Baodu Group team provides the best steel building solution according to the specific requirements of different regions. If you are looking for a competitive price and best quality steel structure contractor, please give your detailed request to the email: [chunlei.song@baodu.com](mailto:chunlei.song@baodu.com). We are ready to answer any questions regarding your projects.

#### We can provide :

#### 1. Customization Service

main steel frame	H section steel beam and columns, galvanized C section ,Q345, Q235, Q345B, Q235B etc.	Secondary frame	hot dip galvanized C purlin , steel bracing , tie bar , knee brace , edge cover etc.
Roof panel	EPS sandwich panel,glass fiber sandwich panel,rock wool sandwich panel,and PU sandwich panel or steel sheet	Wall panel	EPS, Mineral wool, PU sandwich, corrugated steel sheet
Tie Rod	Circular Steel Tube	Brace	Round Bar
Knee Brace	Angle Steel	Roof Gutter	Color Steel Sheet
Door:	Rolled up door or Sliding door	Window:	Plastic steel or Aluminum alloy window
Surface:	Hot dip galvanized or painted	Crane:	5MT, 10MT, 15MT and more

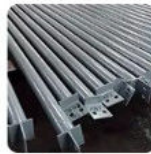
## Products materials



**Embedded** bolts  
for foundation



**Structure** frame  
for columns or  
beams



**Bracing** material



**Connected** plate



**Purlin**



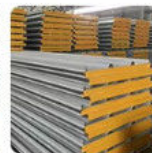
**Cladding** material  
1 - steel sheet



**Cladding** material  
2- EPS panel



**Cladding** material  
3- glass wool panel



**Cladding** material  
4- rock wool panel



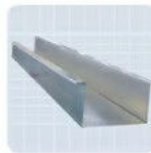
**Door** option  
1- sliding door



**Cladding** material  
2- rolling door



**Aluminum** window



**Water** gutter



**Water** pipe



**Sealing** materi



**Ventilation**  
equipment on roof



**FRP** panel for  
lighting



**Bolts**



**Steel** decking



**Stair** (if neede

## 2. Strict Quality Inspection

With good quality steel material, we have AWS-D1.1/D1.5 welding quality system and professional CWI welding inspector to ensure high quality of the product.

### **3. Shortest Delivery Time**

We have 2 modern factories and 3 production lines with a total area of 150000 square meters to produce. We guarantee a warehouse of 5000 square meters and delivery within 30 days.

### **4. Production Visualization**

We can provide you with picture,video information of all production links, from raw materials to steel processing, the whole process of visual production. You can even video call us to watch workshop production.

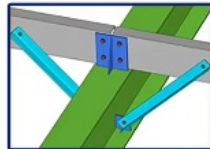
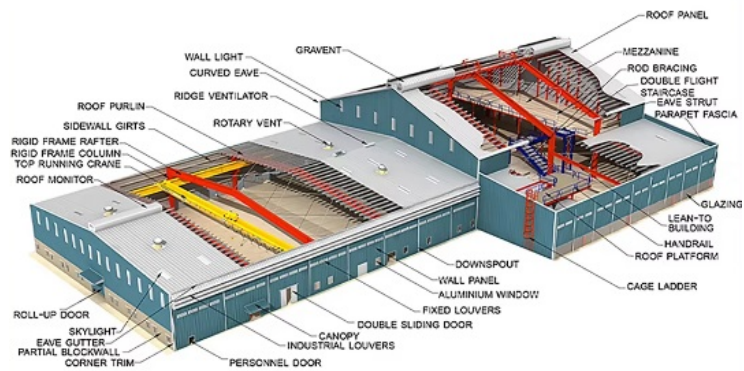
### **5. Packing and Delivery**

Container and pallet packing will protect the surface paint or zinc of the steel structures. In order to facilitate your installation, we will mark each component in sequence according to the drawings.

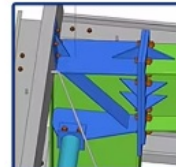
## 6. Installation Guide

Installation instruction and video will be provide, we can also send our engineers to your site as installation guide, they will teach your people how to build project.

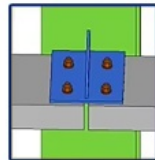
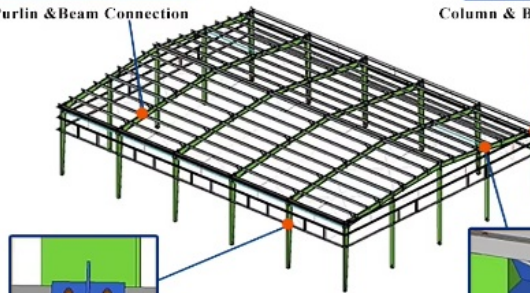
### Technical Parameters:



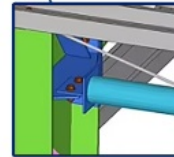
Purlin & Beam Connection



Column & Beam Connection



Purlin & Column Connection



Tie & Column Connection

If you are interested in our steel structure , please give us the following information:

- 1 Location (where will be built? ) \_\_\_\_\_country, area
- 2 Size: Length\*width\*height \_\_\_\_\_mm\*\_\_\_\_\_mm\*\_\_\_\_\_mm
- 3 wind load (max. Wind speed) \_\_\_\_\_kn/m2, \_\_\_\_\_km/h, \_\_\_\_\_m/s
- 4 snow load (max. Snow height) \_\_\_\_\_kn/m2, \_\_\_\_\_mm
- 5 anti-earthquake \_\_\_\_\_level
- 6 brickwall needed or not If yes, 1.2m high or 1.5m high
- 7 thermal insulation If yes, EPS, fiberglass wool, rockwool, PU sandwich panels will be suggested; If not, the metal steel sheets will be ok. The cost of the latter will be much lower than that of the former.
- 8 door quantity & size \_\_\_\_\_units, \_\_\_\_\_(width)mm\*\_\_\_\_\_ (height)mm
- 9 window quantity & size \_\_\_\_\_units, \_\_\_\_\_(width)mm\*\_\_\_\_\_ (height)mm
- 10 crane needed or not If yes, \_\_\_\_\_units, max. Lifting weight\_\_\_\_\_ tons; Max. Lifting height \_\_\_\_\_m.

### Production Process:



## Strict Quality Inspection Standards



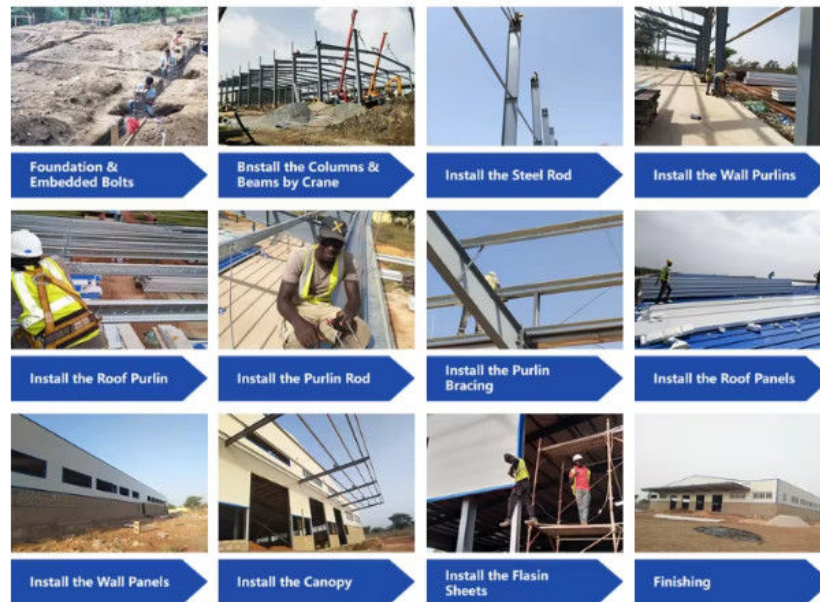
Excellent product quality is our eternal pursuit, and it is also the fundamental reason for us to base ourselves on the global market. BAODU GROUP implements whole-process quality management and strictly supervises every process such as raw material supply, engineering design, steel component manufacturing, installation and construction.

We have established a professional team of quality inspection engineers, introduced internationally leading quality inspection equipment such as German GS1000 vacuum spectrometer and high-frequency infrared carbon sulfur analyzer, established a high-quality product inspection room, and won many awards from China's advanced quality management unit.

In addition, we support testing and certification by SGS, TUV, BV.

## About the installation problems:





Three ways to help you on the installation:

1. We can offer you the manual include the photos and drawings, or some videos for help you on the installation. And you will organize the local people to install it.
2. We can send our people to your site to guide your people to install.
3. You can send your people (engineers or the technician) to our company to study the installation details.

### Applications:

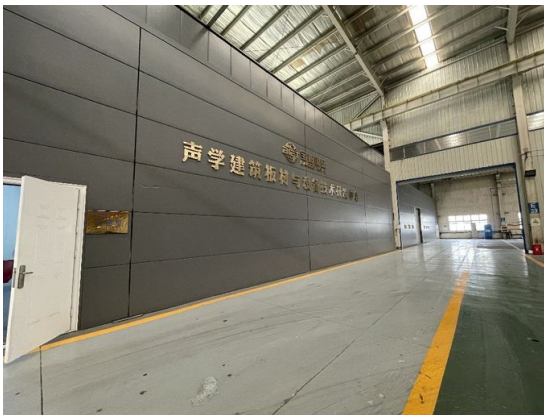


Steel structure buildings serve a wide range of purposes, including warehouses, workshops, factories, cold storage facilities, high-rise buildings, shopping malls, power plants, distribution centers, pedestrian bridges, steel-structured hotels, prefabricated public schools, sports arenas and halls, car parking centers, airplane hangars and aviation facilities, church buildings and community centers, poultry farms, agricultural buildings and barns, storage sheds, self-storage buildings, greenhouses, garages, commercial buildings, industrial facilities, and much more.

### Project Cases:



**Our capacity and certification:**





## OUR CERTIFICATE



1. We have a group of professional engineers, most of whom has more than 20 years experiences in architecture field. our company has got a various of experiences in design, manufacture, installation and so on. The work staff have excellent skills. Some of them had helped customers to install the warehouse around the world.
2. We will offer one stop service. construction drawing, calculation sheet will be offered to help you get construction permit. Foundation design could be free made if you need. We could make 3D drawings to show the view. What's more, Installation drawings will be offered and Steel structure column, beams will be marked number on it to help you install.
3. We will send you extra bolts, purlins, panels incase any damage when install.
4. Efficiency is our pursuit. Every inquiry ,emails will be replied immediately. Every questions will be paid high attention.
5. We also have possessed more than 40 sets of large precise and domestically advanced processing equipments, including large gantry planing machines, automatic submerged arc welding machines, assembling machines, slitters, shot blasting machines and soon.
6. We will offer details packing list for every container when load so it will be easier to unload.
7. "Moral personality decides product quality." is our guarantee to the products. "Customers come first." is our everlasting pursuit. Believe your choose, we'll give you a satisfied answer.

## Support and Services:





Hi, Dear friend, Pls. Attention

Steel structure building is one kind of product which can be design as per every proples' different need.

so, if you found that follows example pictures is not as same as your want, even it is very different.

Do not worried,

No matter which kind of building you need, prefabricated house steel workshop warehouse building

Bigger, smaller or multi-storey, just tell me the data or drawing of building what you need.

We will make the exact design, quotation and rendering for you as soon as we can.

(Our group have more than 20 years experience on steel structure )

Please Click below, find surprise !

### Company profile:

Baodu International Advanced Construction Material Co., Ltd was established in January 2010 with the office in Beijing and factory in Hebei, China. Baodu is a designer, manufacturer, supplier and exporter of industrial noise comprehensive treatment, steel structure, sandwich panel and prefab house. Baodu has an annual output of 6 million square meters of acoustic sandwich panels, 100000 tons of steel structures and 1 million square meters of floor decking sheet. The products are sold in more than 30 countries and regions around the world. Baodu has a professional design team with more than 10 years' experience, including 5 senior engineers, 20 engineers, and 35 technicians. Baodu has several energy saving and environment protection intellectual property rights, construction and environment protection design qualification, CE certification and Russian GOST certification etc. Baodu participated in the military parade village project for the 60th anniversary of China and project of Beijing Daxing International Airport. Under the guidance of China's "one belt, one road" strategy, Baodu has also undertaken overseas projects such as the project of Thar,Pakistan coal fired power plant, Hasyan Dubai power plant and so on. Finally, welcome your coming to Baodu for a visit and cooperation!

### Packing and Shipping:



Packaging Details :

1.Steel structure components will be in packaging with proper protection.

2.Sandwich panels will be covered with plastic film.

3.Bolts and other accessories will be loaded into wooden Boxes

All the structure components, panels, bolts and sorts of accessories will be well packed with standard package suitable for ocean transport and loaded into 40'HQ.

All the products are loaded at the loading site of our factory using crane and forklift by our skilled workers, who will prevent the goods to be damaged.

Good relationship with many vessel companies to make sure the transportation smooth

### FAQ:

Q1: Can I have a visit to your factory before the order?

A: Why not? Welcome to visit our factory. You can fly to Beijing Daxing Airport, then we will pick you up at the airport, hotel booking service is available.

Q2:Is your price competitive compared with other companies?

A:Our business objectives are to give the best price with same quality and best quality with the same price. We will do everything we can to reduce your cost and guarantee you get the best product that you paid for.

Q3:Do you accept container loading inspection?

A:You are welcomed to send an inspector, not only for the container loading, but any time during the production time.

Q4:Do you offer designing service for us?

A:Yes, we could design full solution drawings as your requirements.By using AutoCAD ,PKPM ,3D3S,Tekla Structures etc., we can design complex industrial building like office mansion, super marker, auto dealer shop,shipping mall, 5 stars hotel.

Q5:What is the delivery time?

A:Delivery time depends on order quantities. In general, the delivery time to nearest seaport in China will be 30 days after receiving deposit.

Q6:How can you get a quotation for your projects?

A:You can contact us by email, phone, Alibaba TM, WhatsApp and so on 24\*7 and you will get reply within 8 hours. Firstly, please send us your project details and your requirements. Then we will design accordingly, free of charge. Afterwards, please check and confirm whether you like the drawings. If not, we shall get the drawings revised until your confirmation.



**Baodu International Advanced Construction Material Co., Ltd.**



+86 13717927965



chunlei.song@baodu.com



baodupanel.com

Room 1101, Building 6, Yard 9, Hongye Road, Daxing District, Beijing