

Pre Engineered Warehouse Steel Structure Building Assembled Quickly

Our Product Introduction

for more products please visit us on baodupanel.com

Basic Information

- Place of Origin: Hebei, China
- Brand Name: BAODU
- Certification: ISO9001, CE
- Model Number: Steel Warehouse
- Minimum Order Quantity: 20 Ton
- Price: \$34-50/square meter
- Packaging Details: In general, for steel structure, we use the steel frame packing to keep goods not to be broken. For sandwich panel and color steel sheet, we use the plastic packing. If the clients need special packing will according to their requirements.
- Delivery Time: 45 days
- Payment Terms: L/C, D/A, D/P, T/T, Western Union, MoneyGram
- Supply Ability: 10000 Square Meter/Square Meters per Month



Product Specification

- Product Name: Warehouse Steel Structure Building Steel Structure Warehouse
- Product Type: Warehouse
- Main Frame: Welded H Steel Beam, Steel Truss
- After-sale Service: Online Technical Support
- Design Style: Modern
- Drawing Design: AutoCAD, sketchup
- Project Solution Capability: 3D Model Design, Total Solution For Projects
- Processing Service: Bending, Welding, Decoiling, Cutting, Punching
- Application Fields: Warehouse, Factory, Steel Structure Building
- Surface Treatment: 1. Painting 2. Galvanized
- Highlight: Assembled Quickly Steel Structure Building

Product Description

Warehouse Steel Structure Building Steel Structure Warehouse

Specifications :

Prefabricated warehouse is a kind light steel structure building,the frame of the warehouse building consists of H section steel columns,H section steel beams and C/Z section purlins.There are two kinds of wall and roof panel materials,currogated steel sheet or sandwich panel,which depends on the usage of warehouse and your requirement. All components of the warehouse building are prefabricated in our factory,all you have to do is connecting them with bolts in your work site.

Baodu steel structure is a professional steel structure company. We have many years experience on steel structure buildings especially in prefabricated warehouse and workshop. Our products had been exported to many countries all over the world.

Advantages of steel structure buildings:



1. Light weight, high strength, 50years durable use, no construction waste.
2. Cost considering: Time saved, cost saved;
3. Easy move, materials can be recycled used, environmentally;
4. Used widely, used as factory, warehouse, office building, aircraft hangar etc;
5. Structural durabilities, easy maintenance.

We can provide :

1.Customization Service

No.	Item	Materials
1	Column and Beam	Q345 or Q235 H section steel (painted or galvanized)
2	Wall&Roof Purlin	C or Z section steel, size from c120~C320, z100~Z200(galvanized)
3	Wall&Roof Panel	colorful corrugated steel sheet or sandwich panels (eps, rockwool, fiber glass, pu etc.)
4	supporting	steel angle, steel pipe, steel round bar.
5	door	sliding sandwich panel door or rolling metal door
6	window	pvc or aluminum alloy windows
7	accessory	anchor bolt, high strengthen bolt, normal Bolt, skylight Belts, ventilators, gutter, down pipe, etc.

Products materials



Embedded bolts for foundation



Structure frame for columns or beams



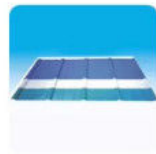
Bracing material



Connected plate



Purlin



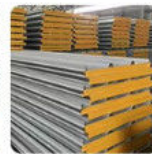
Cladding material 1 -steel sheet



Cladding material 2- EPS panel



Cladding material 3-glass wool panel



Cladding material 4-rock wool panel



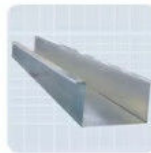
Door option 1-sliding door



Cladding material 2-rolling door



Aluminum window



Water gutter



Water pipe



Sealing material



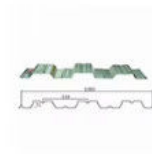
Ventilation equipment on roof



FRP panel for lighting



Bolts



Steel decking



Stair (if needed)

2. Strict Quality Inspection

With good quality steel material, we have AWS-D1.1/D1.5 welding quality system and professional CWI welding inspector to ensure high quality of the product.

3. Shortest Delivery Time

We have 2 modern factories and 3 production lines with a total area of 150000 square meters to produce. We guarantee a warehouse of 5000 square meters and delivery within 30 days.

4. Production Visualization

We can provide you with picture,video information of all production links, from raw materials to steel processing, the whole process of visual production. You can even video call us to watch workshop production.

5. Packing and Delivery

Container and pallet packing will protect the surface paint or zinc of the steel structures. In order to facilitate your installation, we will mark each component in sequence according to the drawings.

6. Installation Guide

Installation instruction and video will be provide, we can also send our engineers to your site as installation guide, they will teach your people how to build project.

Technical Parameters:

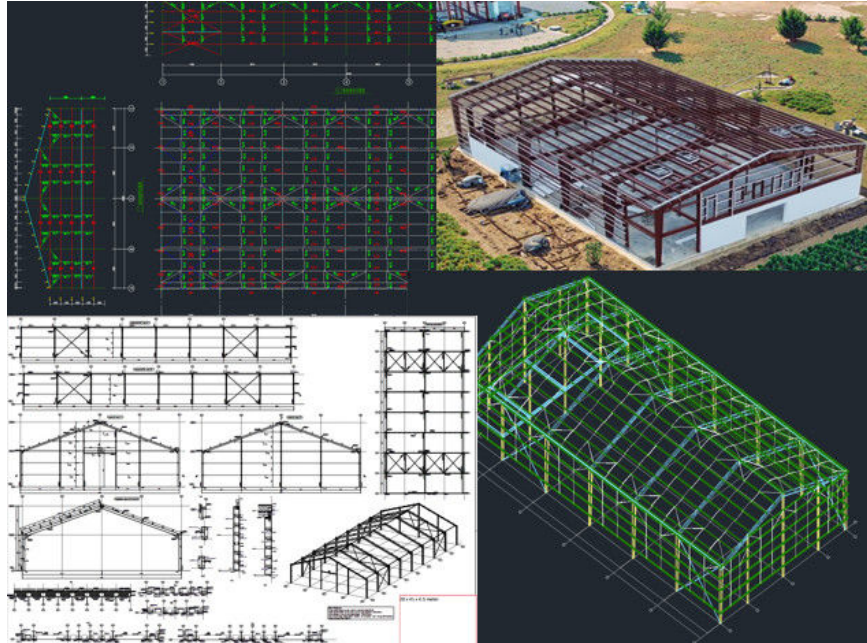


AUTODESK
3DS MAX

SAP 2000



AUTODESK
AUTOCAD



In order to ensure the accurate quotation, pls provide below info before quotation, thanks!

1. Location (where will be built?) which country? which city?
2. Size: Length*width* Eave height _____mm*_____mm*_____mm
3. wind load (max. Wind speed) _____kn/m2, _____km/h, _____m/s
4. snow load (max. Snow height) _____kn/m2, _____mm, temperature range?
5. anti-earthquake _____level
6. Brick wall needed or not If yes, 1.2m high or 1.5m high? or other?
7. thermal insulation If yes, EPS, fiberglass wool, rockwool, PU sandwich panels will be suggested;
If not, the metal steel sheets will be ok. The cost of the latter will be much lower than that of the former.
8. door quantity & size _____units, _____(width)mm*_____ (height)mm
9. window quantity & size _____units, _____(width)mm*_____ (height)mm
10. crane needed or not If yes, _____units, max. Lifting weight_____tons; Max. Lifting height _____m

Production Process:



Strict Quality Inspection Standards

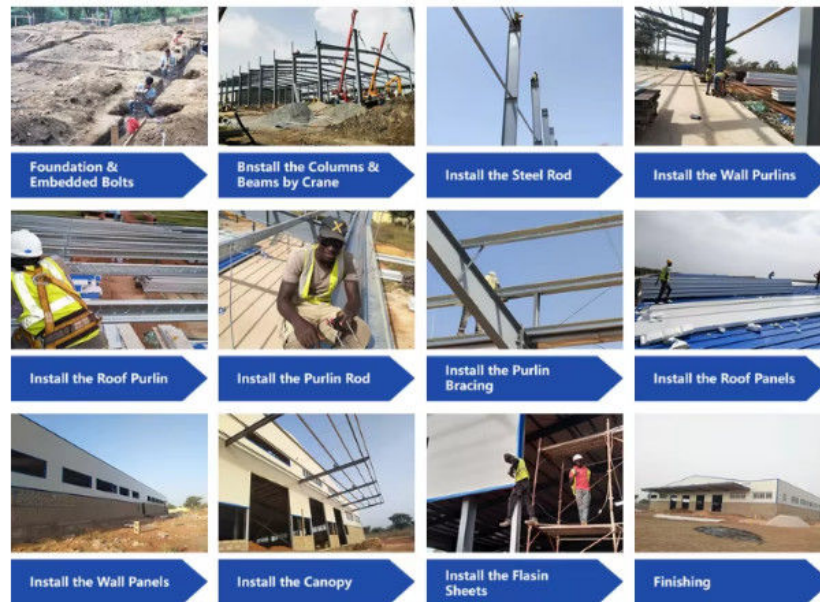


Excellent product quality is our eternal pursuit, and it is also the fundamental reason for us to base ourselves on the global market. BAODU GROUP implements whole-process quality management and strictly supervises every process such as raw material supply, engineering design, steel component manufacturing, installation and construction.

We have established a professional team of quality inspection engineers, introduced internationally leading quality inspection equipment such as German GS1000 vacuum spectrometer and high-frequency infrared carbon sulfur analyzer, established a high-quality product inspection room, and won many awards from China's advanced quality management unit.

In addition, we support testing and certification by SGS, TUV, BV.

About the installation problems:



Installation plan A: We have the detailed installation drawings for you, you can hire a construction team and according to drawings to install.

Installation plan B: If you need engineer, We can send one engineer to help and guide your workers how to install the buildings.

Installation plan C: If you have needs in construction team, we can send engineer & construction team to help you

Applications:

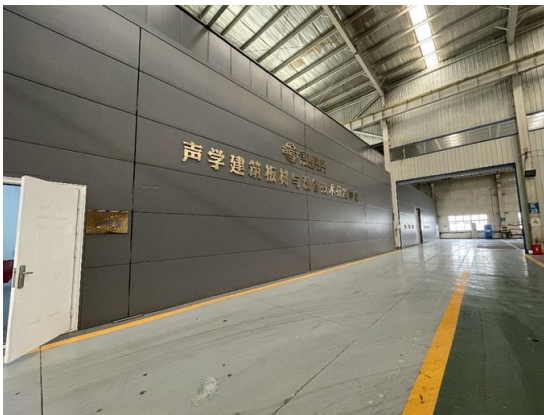


Steel structure buildings serve a wide range of purposes, including warehouses, workshops, factories, cold storage facilities, high-rise buildings, shopping malls, power plants, distribution centers, pedestrian bridges, steel-structured hotels, prefabricated public schools, sports arenas and halls, car parking centers, airplane hangars and aviation facilities, church buildings and community centers, poultry farms, agricultural buildings and barns, storage sheds, self-storage buildings, greenhouses, garages, commercial buildings, industrial facilities, and much more.

Project Cases:



Our capacity and certification:



OUR CERTIFICATE



1. We have a group of professional engineers, most of whom has more than 20 years experiences in architecture field. our company has got a various of experiences in design, manufacture, installation and so on. The work staff have excellent skills. Some of them had helped customers to install the warehouse around the world.
2. We will offer one stop service. construction drawing, calculation sheet will be offered to help you get construction permit. Foundation design could be free made if you need. We could make 3D drawings to show the view. What's more, Installation drawings will be offered and Steel structure column, beams will be marked number on it to help you install.
3. We will send you extra bolts, purlins, panels incase any damage when install.
4. Efficiency is our pursuit. Every inquiry ,emails will be replied immediately. Every questions will be paid high attention.
5. We also have possessed more than 40 sets of large precise and domestically advanced processing equipments, including large gantry planing machines, automatic submerged arc welding machines, assembling machines, slitters, shot blasting machines and soon.
6. We will offer details packing list for every container when load so it will be easier to unload.
7. "Moral personality decides product quality." is our guarantee to the products. "Customers come first." is our everlasting pursuit. Believe your choose, we'll give you a satisfied answer.

Support and Services:





Our Prefab Steel Warehouse product comes with comprehensive technical support and services to ensure your satisfaction and success. Our team of experts is available to assist you with any questions or concerns you may have regarding the product, from initial installation to ongoing maintenance.

Our technical support services include:

Consultation and guidance on product selection and customization options

Assistance with project planning and design

On-site installation supervision and training

Ongoing technical support and troubleshooting

In addition to our technical support services, we also offer a range of other services to enhance the value and performance of our Prefab Steel Warehouse product, including:

Engineering and design services

Project management and coordination

Logistics and shipping services

Maintenance and repair services

With our technical support and services, you can trust that our Prefab Steel Warehouse product will meet your needs and exceed your expectations.

Company profile:

Baodu International Advanced Construction Material Co., Ltd was established in January 2010 with the office in Beijing and factory in Hebei, China. Baodu is a designer, manufacturer, supplier and exporter of industrial noise comprehensive treatment, steel structure, sandwich panel and prefab house. Baodu has an annual output of 6 million square meters of acoustic sandwich panels, 100000 tons of steel structures and 1 million square meters of floor decking sheet. The products are sold in more than 30 countries and regions around the world. Baodu has a professional design team with more than 10 years' experience, including 5 senior engineers, 20 engineers, and 35 technicians. Baodu has several energy saving and environment protection intellectual property rights, construction and environment protection design qualification, CE certification and Russian GOST certification etc. Baodu participated in the military parade village project for the 60th anniversary of China and project of Beijing Daxing International Airport. Under the guidance of China's "one belt, one road" strategy, Baodu has also undertaken overseas projects such as the project of Thar, Pakistan coal fired power plant, Hasyan Dubai power plant and so on. Finally, welcome your coming to Baodu for a visit and cooperation!

Packing and Shipping:



Packaging Details :

1. Steel structure components will be in packaging with proper protection.

2. Sandwich panels will be covered with plastic film.

3. Bolts and other accessories will be loaded into wooden Boxes

All the structure components, panels, bolts and sorts of accessories will be well packed with standard package suitable for ocean transport and loaded into 40'HQ.

All the products are loaded at the loading site of our factory using crane and forklift by our skilled workers, who will prevent the goods to be damaged.

Good relationship with many vessel companies to make sure the transportation smooth

FAQ:

Q1: What are the benefits of steel construction?

- A: 1-Durable and with long lifespan.
2-Short construction period than concrete and wooden building.
3-Low cost and reusable.
4-High strength and light weight, has good seismic performance.
5-Widely used for multi-purpose buildings.

Q2: What is your terms of payment?

A: L/C and T/T

Q3: What's the quality assurance you provided and how do you control quality?

A: Established a procedure to check products at all stages of the manufacturing process - raw materials, in process materials, validated or tested materials, finished goods, etc. We accept customers to inspect the goods at the factory and provide steel structure inspection reports for each batch of goods

Q4: How to pack the products?

- A: 1- Steel structure components will be in packaging with proper protection.
2- Sandwich panels will be covered with plastic film.
3- Bolts and other accessories will be loaded into wooden Boxes
4- All the structure components, panels, bolts and sorts of accessories will be well packed with standard package suitable for ocean transport and loaded into 40'HQ.
5- All the products are loaded at the loading site of our factory using crane and forklift by our skilled workers, who will prevent the goods to be damaged.

Q5: Do you offer guiding installation on site overseas for the buildings?

A: Yes, we can provide the service of installation, supervision and training by extra. We can send our professional technical engineer to supervise installation on site overseas. They have succeeded in many countries such as USA, Dubai, South Africa, Algeria, and Ghana.



Baodu International Advanced Construction Material Co., Ltd.



+86 13717927965



chunlei.song@baodu.com



baodupanel.com

Room 1101, Building 6, Yard 9, Hongye Road, Daxing District, Beijing