

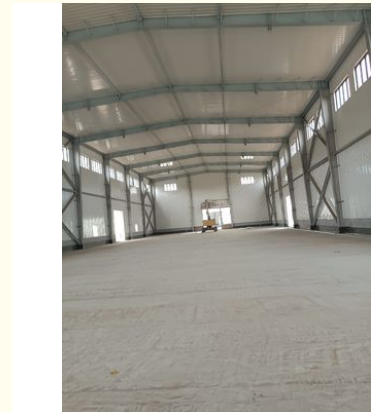
3d Model Design Metal Structure Prefab Steel Structure High Rise Building

Our Product Introduction

for more products please visit us on baodupanel.com

Basic Information

- Place of Origin: Hebei,China
- Brand Name: BAODU
- Certification: ISO9001,CE
- Model Number: Steel Warehouse
- Minimum Order Quantity: 20 Ton
- Price: \$34-50square meter
- Packaging Details: In general, for steel structure , we use the steel frame packing to keep goods not to be broken . For sandwich panel and color steel sheet, we use the plastic packing . If the clients need special packing will according to their requirements.
- Delivery Time: 45days
- Payment Terms: L/C, D/A, D/P, T/T, Western Union, MoneyGram
- Supply Ability: 10000 Square Meter/Square Meters per Month



Product Specification

- Product Name: 3D Model Design Hot Sale Metal Structure Prefab Building Steel Structure High Rise Building
- Warranty: 50 -100 Year
- Main Frame: Welded H Steel Beam, Steel Truss
- After-sale Service: Online Technical Support
- Design Style: Modern
- Drawing Design: AutoCAD,sketchup
- Project Solution Capability: 3D Model Design, Total Solution For Projects
- Processing Service: Bending, Welding, Decoiling, Cutting, Punching
- Application Fields: Warehouse, Factory, Steel Structure Building
- Color: Customized Color



Product Description

3D Model Design Hot Sale Metal Structure Prefab Building Steel Structure High Rise Building

1. Primary Framing

Primary Frames are the main load-carrying structural steel components. They may be Clear-span Rigid Frames, Continuous Beam Frames, or Post & Beam Frames. Primary frames are designed in accordance with the steel construction manual published by American Institute of Steel Construction (AISC). Manufacturing dimensional tolerances are in accordance with the requirements of 'Metal Building Manufacturers Association' (MBMA) of USA, "Low Rise Building Systems Manual". Besides AISC and MBMA, we also design buildings with IS-875, 1984 and IS-875, 2007. Built-up sections are fabricated from hot rolled steel plates conforming to ASTM A 572M grade or equivalent with minimum yield strength of 345N/mm² (50ksi). The most common primary framing systems are illustrated here. All structures shown are symmetrical about the ridge line. Framing systems unsymmetrical about the ridge line and Multi span Framing Systems with unequal width modules are possible too. Practically any frame geometry can be erected.

2. Secondary Framing (Bracing, Z and C section purlin)

Purlin, tie bar and bracing are secondary structural members used to support the wall and roof cladding. Secondary members as purlin, tie bar, column bracing and horizontal bracing connect the main frame and help in resisting part of the longitudinal loads that are applied on the building such as wind and earthquake loads. Steel purlin is available in high grade steel conforming to GB/T 2518-2008, Q235B/Q345B Grade or equivalent, available in 1.8 mm, 2.0 mm, 2.2 mm, 2.5 mm and 3.0 mm thickness. The purlin come with a galvanized sheet. Column bracing is a connecting member set between two adjacent columns to ensure the overall stability of the building structure, improve lateral stiffness and transfer longitudinal horizontal force. Column bracing will be round steel or angle steel according to the building need.

3. Steel Decking Floor

The pressed steel plates supporting the floor concrete are called profiled plates, also called floor bearing board. The steel decking board are widely used in multi-storey buildings such as power plant, exhibition hall, steel structure workshop, cement warehouse, steel structure office, airport terminal, railway station, stadium, concert hall, grand theater, large supermarket, logistics center, Olympic venues and sports venues and other steel structure buildings. It can adapt to the main steel structure rapid construction requirements, can provide a firm platform in a short time, and can take flow repetitive construction operation, laid a number of floors decking board, and pouring concrete slab.

Advantages of steel structure buildings:



- 1: The components of steel structures have small cross-sections, light weight, and are easy to transport and install. They are suitable for structures with large spans, high heights, and heavy loads.
- 2: Suitable for withstanding impact and dynamic loads, with good seismic performance, uniform internal structure of steel, and high reliability.
- 3: Mechanized production of steel structural components with high precision, high production efficiency, fast on-site assembly speed, and short construction period in factories.
- 4: Steel structures have high fire resistance and corrosion resistance. 5: Steel structure buildings are easy to move and pollution-free.

We can provide :

1. Customization Service

main steel frame	H section steel beam and columns, galvanized C section ,Q345, Q235, Q345B, Q235B etc.	Secondary frame	hot dip galvanized C purlin , steel bracing , tie bar , knee brace , edge cover etc.
------------------	---	-----------------	--

Roof panel	EPS sandwich panel,glass fiber sandwich panel,rock wool sandwich panel,and PU sandwich panel or steel sheet	Wall panel	EPS, Mineral wool, PU sandwich, corrugated steel sheet
Tie Rod	Circular Steel Tube	Brace	Round Bar
Knee Brace	Angle Steel	Roof Gutter	Color Steel Sheet
Door:	Rolled up door or Sliding door	Window:	Plastic steel or Aluminum alloy window
Surface:	Hot dip galvanized or painted	Crane:	5MT, 10MT, 15MT and more

Products materials



Embedded bolts
for foundation



Structure frame
for columns or
beams



Bracing material



Connected plate



Purlin



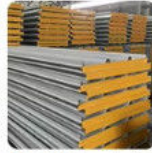
Cladding material
1 - steel sheet



Cladding material
2 - EPS panel



Cladding material
3 - glass wool panel



Cladding material
4 - rock wool panel



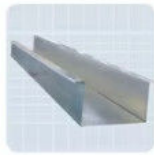
Door option
1 - sliding door



Cladding material
2 - rolling door



Aluminum window



Water gutter



Water pipe



Sealing materi



Ventilation
equipment on roof



FRP panel for
lighting



Bolts



Steel decking



Stair (if needed)

2. Strict Quality Inspection

With good quality steel material, we have AWS-D1.1/D1.5 welding quality system and professional CWI welding inspector to ensure high quality of the product.

3. Shortest Delivery Time

We have 2 modern factories and 3 production lines with a total area of 150000 square meters to produce. We guarantee a warehouse of 5000 square meters and delivery within 30 days.

4. Production Visualization

We can provide you with picture,video information of all production links, from raw materials to steel processing, the whole process of visual production. You can even video call us to watch workshop production.

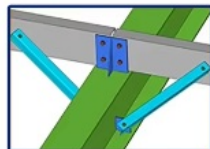
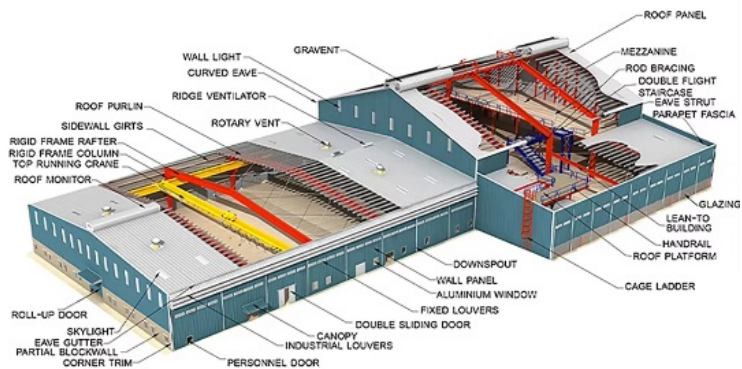
5. Packing and Delivery

Container and pallet packing will protect the surface paint or zinc of the steel structures. In order to facilitate your installation, we will mark each component in sequence according to the drawings.

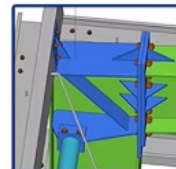
6. Installation Guide

Installation instruction and video will be provide, we can also send our engineers to your site as installation guide, they will teach your people how to build project.

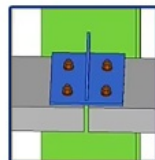
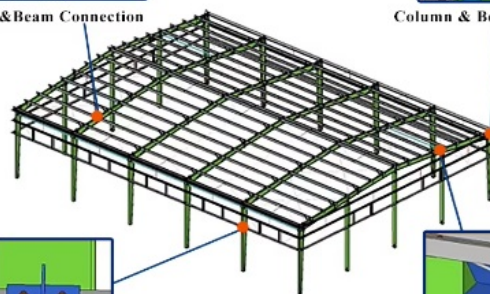
Technical Parameters:



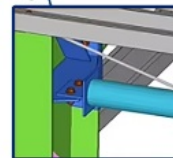
Purlin & Beam Connection



Column & Beam Connection



Purlin & Column Connection



Tie & Column Connection

If you are interested in our steel structure , please give us the following information:

- 1 Location (where will be built?) _____country, area
- 2 Size: Length*width*height _____mm*_____mm*_____mm
- 3 wind load (max. Wind speed) _____kn/m2, _____km/h, _____m/s
- 4 snow load (max. Snow height) _____kn/m2, _____mm
- 5 anti-earthquake _____level
- 6 brickwall needed or not If yes, 1.2m high or 1.5m high
- 7 thermal insulation If yes, EPS, fiberglass wool, rockwool, PU sandwich panels will be suggested; If not, the metal steel sheets will be ok. The cost of the latter will be much lower than that of the former.
- 8 door quantity & size _____units, _____(width)mm*_____ (height)mm
- 9 window quantity & size _____units, _____(width)mm*_____ (height)mm
- 10 crane needed or not If yes, _____units, max. Lifting weight_____tons; Max. Lifting height _____m.

Production Process:



Strict Quality Inspection Standards

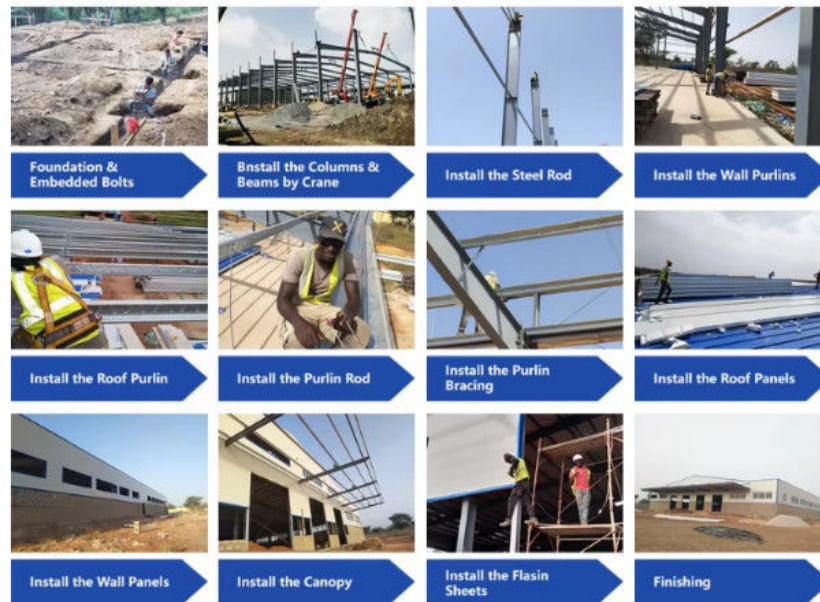


Excellent product quality is our eternal pursuit, and it is also the fundamental reason for us to base ourselves on the global market. BAODU GROUP implements whole-process quality management and strictly supervises every process such as raw material supply, engineering design, steel component manufacturing, installation and construction.

We have established a professional team of quality inspection engineers, introduced internationally leading quality inspection equipment such as German GS1000 vacuum spectrometer and high-frequency infrared carbon sulfur analyzer, established a high-quality product inspection room, and won many awards from China's advanced quality management unit.

In addition, we support testing and certification by SGS, TUV, BV.

About the installation problems:



Installation plan A: We have the detailed installation drawings for you, you can hire a construction team and according to drawings to install.

Installation plan B: If you need engineer, We can send one engineer to help and guide your workers how to install the buildings.

Installation plan C: If you have needs in construction team, we can send engineer & construction team to help you

Applications:

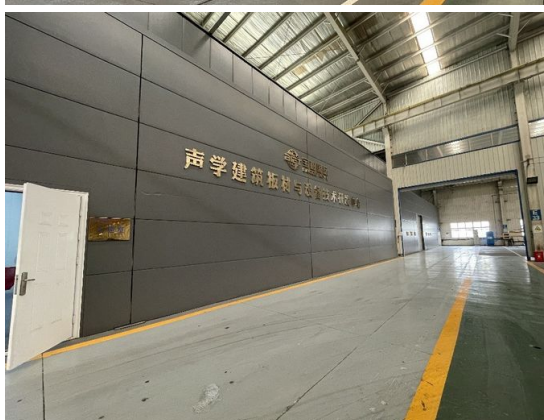


Steel structure buildings serve a wide range of purposes, including warehouses, workshops, factories, cold storage facilities, high-rise buildings, shopping malls, power plants, distribution centers, pedestrian bridges, steel-structured hotels, prefabricated public schools, sports arenas and halls, car parking centers, airplane hangars and aviation facilities, church buildings and community centers, poultry farms, agricultural buildings and barns, storage sheds, self-storage buildings, greenhouses, garages, commercial buildings, industrial facilities, and much more.

Project Cases:



Our capacity and certification:



OUR CERTIFICATE



1. We have a group of professional engineers, most of whom has more than 20 years experiences in architecture field. our company has got a various of experiences in design, manufacture, installation and so on. The work staff have excellent skills. Some of them had helped customers to install the warehouse around the world.
2. We will offer one stop service. construction drawing, calculation sheet will be offered to help you get construction permit. Foundation design could be free made if you need. We could make 3D drawings to show the view. What's more, Installation drawings will be offered and Steel structure column, beams will be marked number on it to help you install.
3. We will send you extra bolts, purlins, panels incase any damage when install.
4. Efficiency is our pursuit. Every inquiry ,emails will be replied immediately. Every questions will be paid high attention.
5. We also have possessed more than 40 sets of large precise and domestically advanced processing equipments, including large gantry planing machines, automatic submerged arc welding machines, assembling machines, slitters, shot blasting machines and soon.
6. We will offer details packing list for every container when load so it will be easier to unload.
7. "Moral personality decides product quality." is our guarantee to the products. "Customers come first." is our everlasting pursuit. Believe your choose, we'll give you a satisfied answer.

Support and Services:





Our Prefab Steel Warehouse product comes with comprehensive technical support and services to ensure your satisfaction and success. Our team of experts is available to assist you with any questions or concerns you may have regarding the product, from initial installation to ongoing maintenance.

Our technical support services include:

Consultation and guidance on product selection and customization options

Assistance with project planning and design

On-site installation supervision and training

Ongoing technical support and troubleshooting

In addition to our technical support services, we also offer a range of other services to enhance the value and performance of our Prefab Steel Warehouse product, including:

Engineering and design services

Project management and coordination

Logistics and shipping services

Maintenance and repair services

With our technical support and services, you can trust that our Prefab Steel Warehouse product will meet your needs and exceed your expectations.

Company profile:

Baodu International Advanced Construction Material Co., Ltd was established in January 2010 with the office in Beijing and factory in Hebei, China. Baodu is a designer, manufacturer, supplier and exporter of industrial noise comprehensive treatment, steel structure, sandwich panel and prefab house. Baodu has an annual output of 6 million square meters of acoustic sandwich panels, 100000 tons of steel structures and 1 million square meters of floor decking sheet. The products are sold in more than 30 countries and regions around the world. Baodu has a professional design team with more than 10 years' experience, including 5 senior engineers, 20 engineers, and 35 technicians. Baodu has several energy saving and environment protection intellectual property rights, construction and environment protection design qualification, CE certification and Russian GOST certification etc. Baodu participated in the military parade village project for the 60th anniversary of China and project of Beijing Daxing International Airport. Under the guidance of China's "one belt, one road" strategy, Baodu has also undertaken overseas projects such as the project of Thar, Pakistan coal fired power plant, Hasyan Dubai power plant and so on. Finally, welcome your coming to Baodu for a visit and cooperation!

Packing and Shipping:



Packaging Details :

1. Steel structure components will be in packaging with proper protection.

2. Sandwich panels will be covered with plastic film.

3. Bolts and other accessories will be loaded into wooden Boxes

All the structure components, panels, bolts and sorts of accessories will be well packed with standard package suitable for ocean transport and loaded into 40'HQ.

All the products are loaded at the loading site of our factory using crane and forklift by our skilled workers, who will prevent the goods to be damaged.

Good relationship with many vessel companies to make sure the transportation smooth

FAQ:

Q1: Can I have a visit to your factory before the order?

A: Why not? Welcome to visit our factory. You can fly to Beijing Daxing Airport, then we will pick you up at the airport, hotel booking service is available.

Q2: Is your price competitive compared with other companies?

A: Our business objectives are to give the best price with same quality and best quality with the same price. We will do everything we can to reduce your cost and guarantee you get the best product that you paid for.

Q3: Do you accept container loading inspection?

A: You are welcomed to send an inspector, not only for the container loading, but any time during the production time.

Q4: Do you offer designing service for us?

A: Yes, we could design full solution drawings as your requirements. By using AutoCAD, PKPM, 3D3S, Tekla Structures etc., we can design complex industrial building like office mansion, super market, auto dealer shop, shipping mall, 5 stars hotel.

Q5: What is the delivery time?

A: Delivery time depends on order quantities. In general, the delivery time to nearest seaport in China will be 30 days after receiving deposit.

Q6: How can you get a quotation for your projects?

A: You can contact us by email, phone, Alibaba TM, WhatsApp and so on 24*7 and you will get reply within 8 hours. Firstly, please send us your project details and your requirements. Then we will design accordingly, free of charge. Afterwards, please check and confirm whether you like the drawings. If not, we shall get the drawings revised until your confirmation.



Baodu International Advanced Construction Material Co., Ltd.



+86 13717927965



chunlei.song@baodu.com



baodupanel.com

Room 1101, Building 6, Yard 9, Hongye Road, Daxing District, Beijing