

Light Industrial Metal Warehouse Solid H-shape Steel Beam Main Frame Steel Structure Prefab Warehouse Building

Our Product Introduction

for more products please visit us on baodupanel.com

Basic Information

- Place of Origin: Hebei, China
- Brand Name: BAODU
- Certification: ISO9001, CE
- Model Number: Steel Warehouse
- Minimum Order Quantity: Discussible
- Price: Reasonable
- Packaging Details: In general, for steel structure, we use the steel frame packing to keep goods not to be broken. For sandwich panel and color steel sheet, we use the plastic packing. If the clients need special packing will according to their requirements.
- Delivery Time: 15-21 days
- Payment Terms: L/C, D/A, D/P, T/T, Western Union, MoneyGram
- Supply Ability: 10000 Square Meter/Square Meters per Month

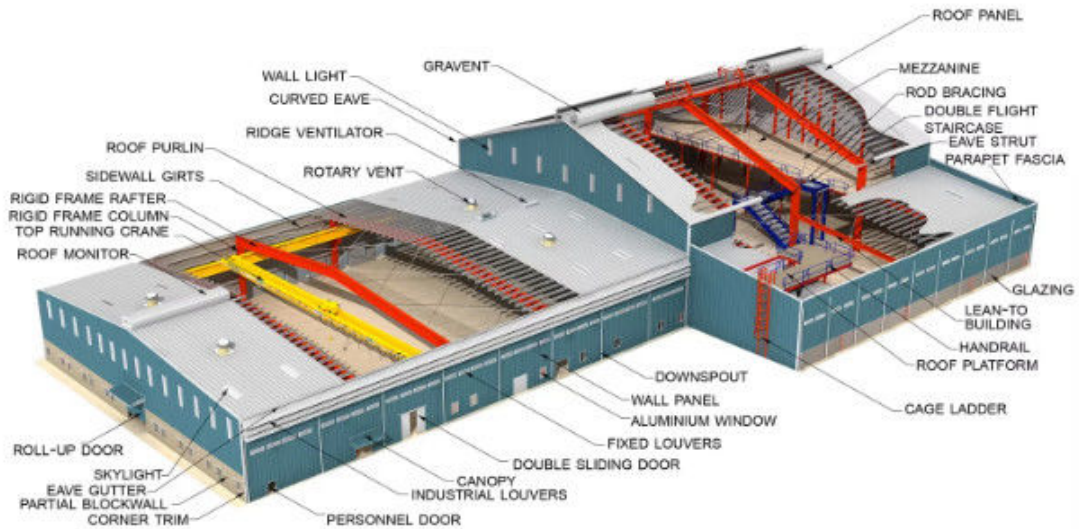


Product Specification

- Product Name: Prefab Warehouse Light Industrial Steel Structure Factory Building Metal Warehouse
- Type: Steel Structure
- Main Frame: Solid H-shape Steel Beam
- Project Solution Capability: Total Solution For Projects
- Purlin: C/Z Galvanized Steel
- Drawing Design: Customers' Request
- Secondary Frame: C&Z Purlin, Brace
- Surface Treatment: Hot Dip Galvanized/Paint
- Design Style: Modern
- Warranty: More Than 50 Years
- Highlight: **Industrial Steel Structure Warehouse Building, Prefab Steel Structure Warehouse Building**

Product Description

Prefab Warehouse Light Industrial Steel Structure Factory Building Metal Warehouse



1. Baodu Prefabricated Steel Structure Building Products:

Lightweight Steel Structures: Used for small to medium-sized buildings such as warehouses, factories, and commercial spaces. They are cost-effective, lightweight, and quick to assemble. **Heavy Steel Structures:** Suitable for large-scale buildings like industrial factories, bridges, airports, and stations, these structures have high load-bearing capacities. **Multi-story & High-rise Steel Structures:** These are used in office buildings, residential complexes, and mixed-use developments. They offer seismic resistance and fast construction timelines.

2. Industrial Steel Structures building:

Factories/Warehouses: Steel structures for industrial facilities, including both single-story and multi-story factory buildings. **Storage Warehouses:** Tailored steel structures for storage and logistics needs.

3. Special Steel Structures

Prefabricated Steel Modules: Used for modular construction, allowing for quick installation of pre-assembled units.

Space Frame Structures: Ideal for large-span structures like stadiums, exhibition halls, and airport terminals.

Steel Curtain Walls: Used for building facades in commercial office buildings, creating a modern aesthetic while offering durability.

4. Supporting Products & Services

Roof and Wall Systems: Including color-coated steel panels, insulated sandwich panels, and other weather-resistant materials for efficient thermal insulation and waterproofing. **Corrosion & Fire Protection Coatings:** Specialized coatings to protect steel from corrosion and to enhance fire safety. **Design and Installation Services:** Comprehensive services, including structural design, engineering, and on-site construction support.

Features:

Product name	Steel Structure Workshop Building	
Main materials	Main structure	Q355B Welded H beam and column (equivalent to S355JR, ASTM A572 Gr. 50)
	Secondary structure	Q235B (equivalent to S235JR, ASTM A36)
Surface	Painting Or Galvanizing	
Roof & wall panel	Single steel sheet & Insulation sandwich panels (PU, rock wool and EPS)	
Doors	Sliding door or roller shutter door	
Windows	PVC or aluminum alloy	
Our service	Design	Professional structural design
	Manufacture	We can manufacture all kinds of steel structure products based on different conditions of projects
	Installation	We provide detailed drawings to ensure installation. We also provide remote guidance for installation. We can also send a team of engineers to guide or install on site.
Quality inspection	Factory Self-inspection Customer inspection Third party inspection	
Other components are available upon request, please provide the detailed for custom design		

Technical Parameters:

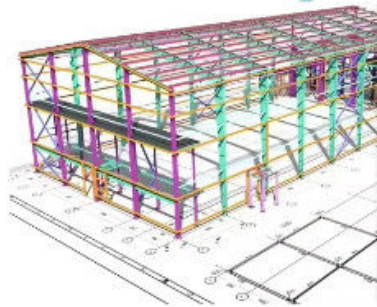


AUTODESK
3DS MAX

SAP2000



AUTODESK
AUTOCAD

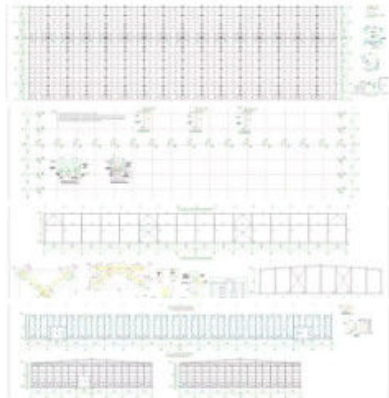


Steel Structural Design

We have an experienced design department, who have abundant practical experience to complete the structural design of various buildings perfectly as per Chinese design codes and local rules. The structure is reasonable and the steel consumption is cost-effective.

For overseas projects, the design work can be took by our partners, all of them are registered structural designers, and the design can be carried out as per BS-standards, US-standards, as well as the design codes of other countries.

Detailing, 3D modeling, fabrication and installation shop drawings can be free with conditions.



If you have drawings, welcome to share drawings with us, quotation will be done based your drawings. Our excellent design team will design the steel structure workshop warehouse for you.

If you give the following information, we will give you an satisfactory drawing.

1 Location (where will be built?) which country? which city?

2 Size: Length*width* Eave height _____mm*_____mm*_____mm

3 wind load (max. Wind speed) _____kn/m², _____km/h, _____m/s

4 snow load (max. Snow height) _____kn/m², _____mm, temperature range?

5 anti-earthquake _____level

6 brickwall needed or not If yes, 1.2m high or 1.5m high? or other?

7 thermal insulation If yes, EPS, fiberglass wool, rockwool, PU sandwich panels will be suggested; If not, the metal sheets will be ok. The cost of the latter will be much lower than that of the former.

8 door quantity & size _____units, _____(width)mm*_____ (height)mm

9 window quantity & size _____units, _____(width)mm*_____ (height)mm

10 crane needed or not If yes, _____units, max. Lifting weight _____tons; Max. Lifting height _____m

We can provide : _____

1. Customization Service

We have a professional design team about 20 people, with 10 years design experience. We can meet your individual needs.

And multi-type steel components, roof and wall panels, doors and windows for choosing.

2. Strict Quality Inspection

With good quality steel material, we have AWS-D1.1/D1.5 welding quality system and professional CWI welding inspector to ensure high quality of the product.

3. Shortest Delivery Time

We have 2 modern factories and 3 production lines with a total area of 150000 square meters to produce. We guarantee a warehouse of 5000 square meters and delivery within 30 days.

4. Production Visualization

We can provide you with picture, video information of all production links, from raw materials to steel processing, the whole process of visual production. You can even video call us to watch workshop production.

5. Packing and Delivery

Container and pallet packing will protect the surface paint or zinc of the steel structures. In order to facilitate your installation, we will mark each component in sequence according to the drawings.

6. Installation Guide

Installation instruction and video will be provide, we can also send our engineers to your site as installation guide, they

will teach your people how to build project.

Installation scene:



Foundation & Embedded Bolts



Install the Columns & Beams by Crane



Install the Steel Rod



Install the Wall Purlins



Install the Roof Purlin



Install the Purlin Rod



Install the Purlin Bracing



Install the Roof Panels



Install the Wall Panels



Install the Canopy



Install the Flasin Sheets



Finishing

Applications:



Steel structure warehouse



Steel structure factory building



Steel structure building



Steel structure garage/hangar



Steel structure house



Steel structure livestock house

Company Product Introduction:	
Industrial plant steel structure:	Manufacturing plants, assembly workshops, industrial electrical warehouses, cold storage, greenhouses, small warehouses, etc.
Commercial and service industry steel structure:	Shopping malls, supermarkets, schools, exhibition halls, gas stations, hotels, residences, entertainment venues, etc.
Farm Steel Structure:	Vegetable warehouse, fruit warehouse, meat, egg, milk and other food warehouses, wine warehouse, etc.
Livestock steel structure:	Livestock shed: cow shed, sheep shed, pig farm, horse farm. Poultry house: chicken house, duck house, goose house, etc.
Logistics and warehouse steel structure:	Logistics warehouses such as sorting warehouses, classified storage warehouses, bonded warehouses, etc.
Temporary building steel structure:	Shelters, rescue centers, quarantine centers, etc.
Transportation steel structure:	airport terminals, railway stations, subway stations, etc.
Bridge steel structure:	Beam bridge, suspension bridge, cable-stayed bridge, truss bridge, floating bridge, suspension bridge, etc.

Project Cases:



Gas Turbine Combined Cycle Power Station Expansion Project in Basra Iraq



Clean Coal Fired Power Plant Phase I (4x600mw net) Project in Hasyan Dubai

Our capacity and certification:



Support and Services:



Our team of experts is available to provide technical support and services for the Prefab Steel Warehouse product.

We offer:

Consultations to help you determine the best solutions for your needs

Customized design services to ensure the warehouse meets your specific requirements

Quality control inspections throughout the production process

On-site installation and assembly services

Maintenance and repair services to keep your warehouse in top condition

Our goal is to provide our customers with reliable, durable, and cost-effective solutions for their storage needs. Contact us for more information on our technical support and services.

Company profile:

Baodu International Advanced Construction Material Co., Ltd was established in January 2010 with the office in Beijing and factory in Hebei, China. Baodu is a designer, manufacturer, supplier and exporter of industrial noise comprehensive treatment, steel structure, sandwich panel and prefab house. Baodu has an annual output of 6 million square meters of acoustic sandwich panels, 100000 tons of steel structures and 1 million square meters of floor decking sheet. The products are sold in more than 30 countries and regions around the world. Baodu has a professional design team with more than 10 years' experience, including 5 senior engineers, 20 engineers, and 35 technicians. Baodu has several energy saving and environment protection intellectual property rights, construction and environment protection design qualification, CE certification and Russian GOST certification etc. Baodu participated in the military parade village project for the 60th anniversary of China and project of Beijing Daxing International Airport. Under the guidance of China's "one belt, one road" strategy, Baodu has also undertaken overseas projects such as the project of Thar,Pakistan coal fired power plant, Hasyan Dubai power plant and so on. Finally, welcome your coming to Baodu for a visit and cooperation!

Packing and Shipping:



Product Packaging:

The prefabricated steel warehouse will be packaged in sturdy box to prevent any damage during transportation.

All components will be carefully wrapped and secured to ensure safe delivery.

Shipping:

The product will be shipped via truck or container, depending on the size of the order and the destination.

Shipping fees will be calculated based on the distance and weight of the order.

Delivery times may vary depending on the destination and shipping method.

Customers will be provided with a tracking number to monitor the status of their shipment.

FAQ:

Q1: Are you a manufacturer or a trading company?

A: We are a manufacturing factory. Welcome to visit our company anytime for inspection. Our quality control process and sales team will showcase our professionalism to you.

Q2: What quality assurance do you provide and how do you control the quality?

A: We will inspect products at various stages of the manufacturing process (raw materials, work in progress) Materials, validated or tested materials, finished products, etc.

Q3: Are your prices competitive compared to other companies?

A: Our business goal is to provide the best price with the same quality and the best quality at the same price. We make every effort to reduce your costs and ensure that you receive the best product you pay for.

Q4: Can you send an engineer or the entire team to install my project?

A: Yes, we will send you detailed installation drawings and videos for free, and we can provide installation services, Supervision and additional training. We can dispatch a professional technical team to overseas sites to supervise installation.

Q5: Do you accept container loading inspections?

A: Welcome to send an inspector who is not only responsible for container loading, but also at any time during the production process.

Q6: Do you provide design services for us?

A: Yes, we can design a complete solution drawing according to your requirements.

By using AutoCAD, PKPM, MTS, 3D3S, Tarch, Tekla Structures (Xsteel), etc.

Q7: What is the delivery time?

A: The delivery time depends on the quantity of orders. Generally speaking, the delivery time is within 30 days.

Q8: How do you get a quote for your project?

A: You can contact us 24/7 through email, phone, Alibaba TM, WhatsApp, Skype, Viber, and other channels.

Q9: How can we ensure that the products you provide are exactly what we want?

A: Before placing an order, our sales and engineering teams will provide you with a suitable solution based on your requirements. We provide schematic diagrams, 3D drawings, material photos, and finished product photos, which will help you gain a deeper understanding of the solutions we offer.



Baodu International Advanced Construction Material Co., Ltd.



+86 13717927965



chunlei.song@baodu.com



baodupanel.com

Room 1101, Building 6, Yard 9, Hongye Road, Daxing District, Beijing