

Industrial Steel Structure Warehouse With EPS/Rockwool/Fiberglass Wool/PU Sandwich Panel Cladding

Our Product Introduction

for more products please visit us on baodupanel.com

Basic Information

- Place of Origin: Hebei, China
- Brand Name: BAODU
- Certification: ISO9001, CE
- Model Number: Steel Warehouse
- Minimum Order Quantity: 100 square meters
- Price: \$15-30 square meter
- Packaging Details: In general, for steel structure, we use the steel frame packing to keep goods not to be broken. For sandwich panel and color steel sheet, we use the plastic packing. If the clients need special packing will according to their requirements.
- Delivery Time: 45 days
- Payment Terms: L/C, D/A, D/P, T/T, Western Union, MoneyGram
- Supply Ability: 5000 Square Meter/Square Meters per Day



Product Specification

- Product Name: High-quality Steel Structure Warehouse
Industrial Steel Structure Warehouse
- Keyword: Steel Building Warehouse
- Main Frame: Steel Column & Steel Beam
- Wall Cladding: EPS/Rockwool/Fiberglass Wool/PU Sandwich Panel Or Steel Sheet
- Processing Service: Bending, Welding, Decoiling, Cutting, Punching
- Application: Steel Storage, factory Or Logistic Warehouse
- Roof Cladding: EPS/Rockwool/Fiberglass Wool/PU Sandwich Panel Or Steel Sheet
- Drawing Design: SAP2000/AutoCAD /PKPM /3D3S/TEKLA
- Performance: Safety, Water-proof, Sound Insulated Heat-preservation Etc.

High-quality Steel Structure Warehouse Industrial Steel Structure Warehouse

Our Product Introduction

for more products please visit us on baodupanel.com

Products Description:



| Main Structure | Including Column & Beam, Made of welded H section Steel, Steel Grade Q355B/Q235B |
|--|---|
| | Column & Beam Connection: High Strength Bolt |
| | Column & Foundation Connection: Pre-embedded Anchor Bolt |
| Secondary Structure | Roof Purlin & Wall Purlin: C-shape or Z-shape Steel |
| | Knee Brace: Angle Steel |
| | Brace: Steel Rod |
| | Tie Bar: Steel Pipe |
| Types of wall panels and roof panels | |
| Color Steel Sheet | Areas without winter, preferred for processing workshops and warehouses |
| Color Steel Sheet & Fiberglass Roll Insulation | Areas with winter but with low requirements of temperature , preferred for warehouses and workshops |
| Insulated Sandwich Panel | Workshops and warehouses with temperature requirements |
| PU Insulated Sandwich Panel | Workshops, warehouses and public facilities with high requirements of temperature for the working environment |

Compared with traditional buildings, steel structure building is a new building structure—the entire building made of steel. The structure mainly comprises steel beams, columns, trusses, and other parts made of section steel and steel plates. It is connected between parts and parts by welding, bolts, and rivets. The lightweight and simple structures are widely used in large factories, stadiums, super high-rise buildings, and other fields. The type of steel building structure includes the portal rigid steel frame, frame structure, truss structure, and grid structure.

Feature and application of the standard type of steel building structure:

1. Portal frame structure has simple force, clear force transmission path, and fast construction speed. It is widely used in industrial and civil buildings such as industrial, commercial, cultural, and entertainment public facilities.
2. Steel building frame structures are flexible and can form a larger space. It is widely used in the multi-story and high-rise building such as commercial office building, shopping mall, conference center and other buildings.
3. Steel truss structure is using small cross-section tube to form larger cross-section components, which are often used in industrial and civil buildings such as large span roof, bridge, tower, marine oil production platform, etc., with large span or height in the building.
4. The steel grid structure is a high-order statically indeterminate space structure composed of many rods according to certain rules with small space stress, lightweight, high rigidity, and excellent seismic resistance. It can be used as a gymnasium, exhibition hall, petrol station and hangars, etc.

Project Cases:



China SVOLT COMPANY
PROJECT-LITHIUM BATTERY
WORKSHOP OF GREAT WALL
MOTOR CO.



Монгол улсын Төмөлтын-
Овоо цайрын уурхайн
гүний хэсгийн нөөцийг
олборлох төсөл



ON-GOING ZINC-MINE
PROJECT IN MONGOLIA



ON-GOING

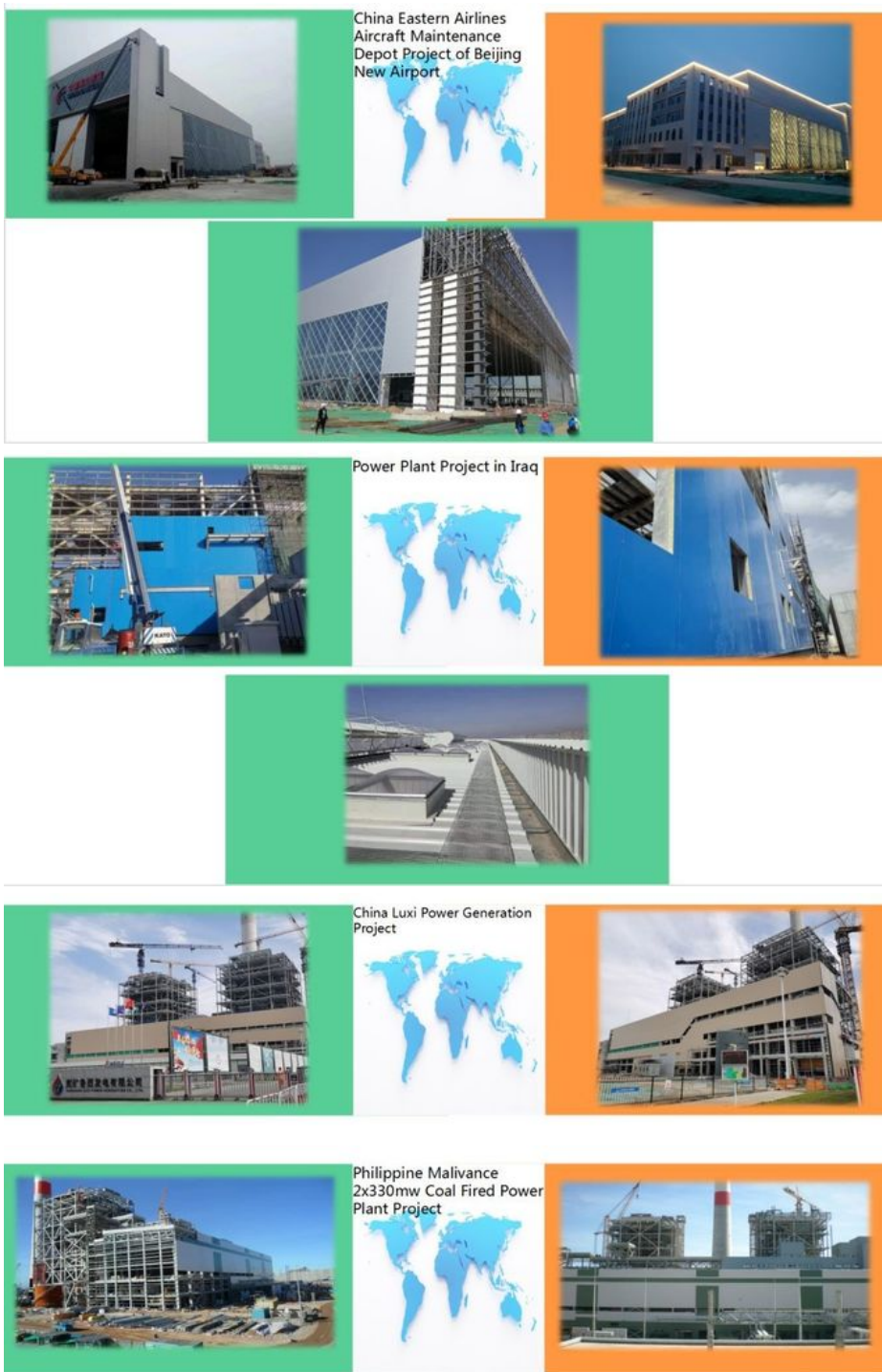


Mongolian Steppe Arena
Roof and Sound-absorbing
Panel for Inside



Beijing Daxing Airport Freight
Station





We can provide : _____

1. Customization Service

We have a professional design team about 40 people, with 10 years design experience. We can meet your individual needs.

And multi-type steel components, roof and wall panels, doors and windows for choosing.



AUTODESK
AUTOCAD

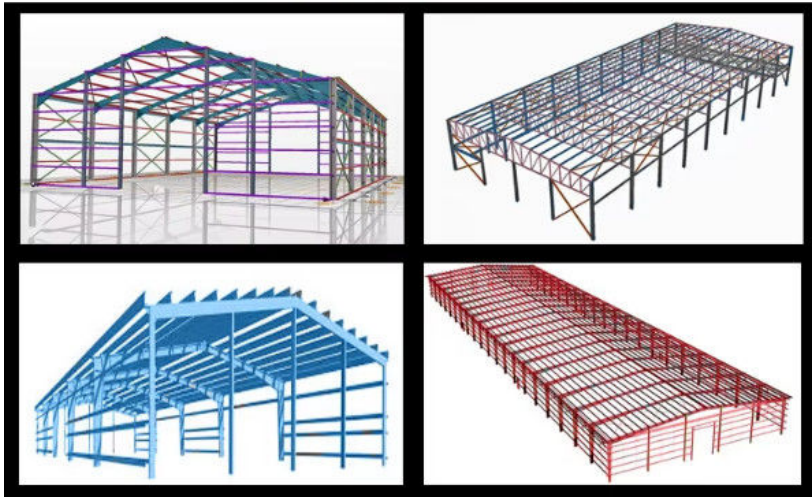
PKPM 2010

3D3S

SAP2000



3DS MAX



Please kindly inform us of the information below if you are interested in our products.

1. Project Progress: Is Land Purchased? Is it licensed by the government?
2. Usage: for warehouse, workshop, showroom, etc.
3. Location: In which country will it be built?
4. Local Climate: Wind speed, Snow load (max. Wind speed)
5. Design: Please provide the design drawing. Or do you need us to design for you?
6. Dimension: Length*width*height
7. Crane Beam: Do you need crane beam inside the steel structure?
8. Roof and Wall: determine the panel material, such as color steel panel, and metal sandwich panel.
9. Windows and Doors: what material, quantity, and type?

2. Strict Quality Inspection

With good quality steel material, we have AWS-D1.1/D1.5 welding quality system and professional CWI welding inspector to ensure high quality of the product.

3. Shortest Delivery Time

We have 2 modern factories and 3 production lines with a total area of 150000 square meters to produce. We guarantee a warehouse of 5000 square meters and delivery within 30 days.

4. Production Visualization

We can provide you with picture,video information of all production links, from raw materials to steel processing, the whole process of visual production. You can even video call us to watch workshop production.

5. Packing and Delivery

Container and pallet packing will protect the surface paint or zinc of the steel structures. In order to facilitate your installation, we will mark each component in sequence according to the drawings.

6. Installation Guide

Installation instruction and video will be provide, we can also send our engineers to your site as installation guide, they will teach your people how to build project.

Product packaging:





FAQ:

1. You are manufacture factory or trading company?

We are manufacture factory. And you are welcomed to visit us at any time. The quality control flow and sales team will show your professionalism. Also you will can get best and most competitive price after visiting us.

2. Is your price competitive compared with other companies?

Our business objectives are to give the best price with same quality and best quality with the same price. We will do everything we can to reduce your cost and guarantee you get the best product that you paid for.

3. Can you send engineers or whole team to install my project?

We will give detailed installation drawings and video for free. We can send engineers as installation director or a team upon request.

4. Do you accept container loading inspection?

You are welcomed to send an inspector, not only for the container loading, but any time during the production time.

5. Do you offer designing service for us?

Yes, we could design full solution drawings as your requirements. By using AutoCAD, PKPM, MTS, 3D3S, Tarch, Tekla Structures(Xsteel) and etc. we can design complex industrial building like office mansion, super marker, auto dealer shop,shipping mall, 5 star hotel.

6. What is the delivery time?

Delivery time depends on order quantities. In general the delivery time to nearest seaport in China will be 30 days after receiving deposit.

7. How can you get a quotation for your projects?

You can contact us by email, phone, WhatsApp, Skype, Viber and so on 7dx24h and you will get reply within 8 hours.



Baodu International Advanced Construction Material Co., Ltd.



+86 13717927965



chunlei.song@baodu.com



baodupanel.com

Room 1101, Building 6, Yard 9, Hongye Road, Daxing District, Beijing