

Steel Frame Light Metal Building Prefabricated Industrial Steel Structure Warehouse

Our Product Introduction

for more products please visit us on baodupanel.com

Basic Information

- Place of Origin: Hebei, China
- Brand Name: BAODU
- Certification: ISO9001, CE
- Model Number: Steel Warehouse
- Minimum Order Quantity: 100 square meters
- Price: \$20-40 square meter
- Packaging Details: In general, for steel structure, we use the steel frame packing to keep goods not to be broken. For sandwich panel and color steel sheet, we use the plastic packing. If the clients need special packing will according to their requirements.
- Delivery Time: 45 days
- Payment Terms: L/C, D/A, D/P, T/T, Western Union, MoneyGram
- Supply Ability: 5000 Square Meter/Square Meters per Day



Product Specification

- Product Name: Steel Frame Light Metal Building Prefabricated Industrial Steel Structure Warehouse
- Main Frame: Welded H Steel Beam, Steel Truss
- Wall Cladding: EPS/Rockwool/Fiberglass Wool/PU Sandwich Panel Or Steel Sheet
- Processing Service: Bending, Welding, Decoiling, Cutting, Punching
- Application: Steel Storage, factory Or Logistic Warehouse
- Roof Cladding: EPS/Rockwool/Fiberglass Wool/PU Sandwich Panel Or Steel Sheet
- Drawing Design: SAP2000/AutoCAD /PKPM /3D3S/TEKLA
- Surface Treatment: Hot Dip Galvanized And Painted
- Performance: Safety, Water-proof, Sound Insulated Hear-



Steel Frame Light Metal Building Prefabricated Industrial Steel Structure Warehouse

Products Description:



Product name	Steel structure building
Main steel frame	H section steel beam, C section steel beam,Z section steel beam, Painted or galvanize Steel,customized
Material	Q235B, Q355B
Bolt Accessories	Foundation bolt & High -Strength Bolts & General Bolt
Wall & Roof	EPS /Glass Wool/Rock Wool /PU Sandwich Panel Or Corrugated Steel Sheet
Surface treatment	Painted or galvanized
Window	Plastic window, aluminum window
Application	Steel structure,warehouse,workshop,garage,hangar,storage shed
Main structural types	Frame structures: Beams and columns Grids structures: latticed structure or dome Prestressed structures Truss structures: Bar or truss members Arch structure Arch bridge Beam bridge Cable-stayed bridge Suspension bridge Truss bridge: truss members

1. Baodu Prefabricated Steel Structure Building Products:

Lightweight Steel Structures: Used for small to medium-sized buildings such as warehouses, factories, and commercial spaces. They are cost-effective, lightweight, and quick to assemble. **Heavy Steel Structures:** Suitable for large-scale buildings like industrial factories, bridges, airports, and stations, these structures have high load-bearing capacities. **Multi-story & High-rise Steel Structures:** These are used in office buildings, residential complexes, and mixed-use developments. They offer seismic resistance and fast construction timelines.

2. Industrial Steel Structures building:

Factories/Warehouses: Steel structures for industrial facilities, including both single-story and multi-story factory buildings.
Storage Warehouses: Tailored steel structures for storage and logistics needs.

3. Special Steel Structures

Prefabricated Steel Modules: Used for modular construction, allowing for quick installation of pre-assembled units.

Space Frame Structures: Ideal for large-span structures like stadiums, exhibition halls, and airport terminals.

Steel Curtain Walls: Used for building facades in commercial office buildings, creating a modern aesthetic while offering durability.

4. Supporting Products & Services

Roof and Wall Systems: Including color-coated steel panels, insulated sandwich panels, and other weather-resistant materials for efficient thermal insulation and waterproofing. **Corrosion & Fire Protection Coatings:** Specialized coatings to protect steel from corrosion and to enhance fire safety. **Design and Installation Services:** Comprehensive services, including structural design, engineering, and on-site construction support.

Project Cases:



BAODU Prefab Steel Warehouse is a versatile and reliable solution for various product application occasions and scenarios. With its durable construction and high-quality materials, this steel warehouse is suitable for a wide range of purposes. Whether you need a building for galvanized storage, light steel building, workshop industrial steel, or any other commercial or industrial use, the BAODU Steel Warehouse is an ideal choice.

Manufactured in Hebei, China, this steel warehouse meets the highest standards of quality and safety. It is certified with ISO9001 and CE, ensuring that it complies with all relevant regulations and requirements. The minimum order quantity is discussible, making it easy to tailor the purchase to your specific needs.

With a reasonable price and excellent packaging details, the BAODU Steel Warehouse offers great value for money. The steel frame packing ensures that the goods are protected during transportation, while the plastic packing for sandwich panels and color steel sheets keeps them secure. Special packing options are also available upon request.

Delivery time for the BAODU Steel Warehouse is just 21 days, allowing for quick and efficient installation. Multiple payment terms are accepted, including L/C, D/A, D/P, T/T, Western Union, and MoneyGram, making the purchasing process convenient for customers. The supply ability of 10000 square meters per month ensures that orders can be fulfilled promptly.

With a tolerance of $\pm 1\%$, the BAODU Steel Warehouse is designed to meet strict accuracy requirements. The wall cladding options include EPS, Rockwool, Fiberglass Wool, PU Sandwich Panel, or Steel Sheet, providing flexibility for different preferences. The aluminum alloy and plastic steel windows offer both durability and aesthetics.

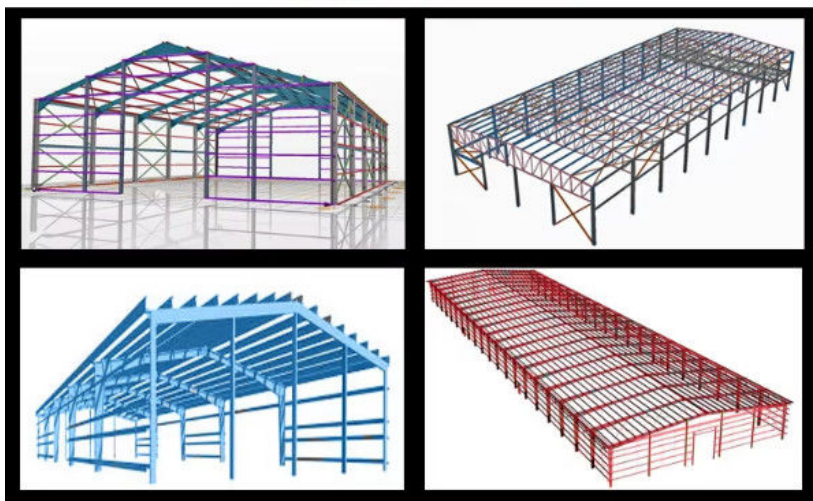
Installation of the BAODU Steel Warehouse is easy and straightforward, making it a practical choice for various construction projects. Whether you need a storage facility, workshop, or industrial building, this prefabricated steel warehouse delivers reliable performance and long-lasting quality.

We can provide :

1. Customization Service

We have a professional design team about 40 people, with 10 years design experience. We can meet your individual needs.

And multi-type steel components, roof and wall panels, doors and windows for choosing.



Please kindly inform us of the information below if you are interested in our products.

1. Project Progress: Is Land Purchased? Is it licensed by the government?
2. Usage: for warehouse, workshop, showroom, etc.
3. Location: In which country will it be built?

4. Local Climate: Wind speed, Snow load (max. Wind speed)
5. Design: Please provide the design drawing. Or do you need us to design for you?
6. Dimension: Length*width*height
7. Crane Beam: Do you need crane beam inside the steel structure?
8. Roof and Wall: determine the panel material, such as color steel panel, and metal sandwich panel.
9. Windows and Doors: what material, quantity, and type?

2. Strict Quality Inspection

With good quality steel material, we have AWS-D1.1/D1.5 welding quality system and professional CWI welding inspector to ensure high quality of the product.

3. Shortest Delivery Time

We have 2 modern factories and 3 production lines with a total area of 150000 square meters to produce. We guarantee a warehouse of 5000 square meters and delivery within 30 days.

4. Production Visualization

We can provide you with picture,video information of all production links, from raw materials to steel processing, the whole process of visual production. You can even video call us to watch workshop production.

5. Packing and Delivery

Container and pallet packing will protect the surface paint or zinc of the steel structures. In order to facilitate your installation, we will mark each component in sequence according to the drawings.

6. Installation Guide

Installation instruction and video will be provide, we can also send our engineers to your site as installation guide, they will teach your people how to build project.

Application scenario **Installation Case**

Seiko quality for the first in stock supply



**Electronic
Manufacturing**



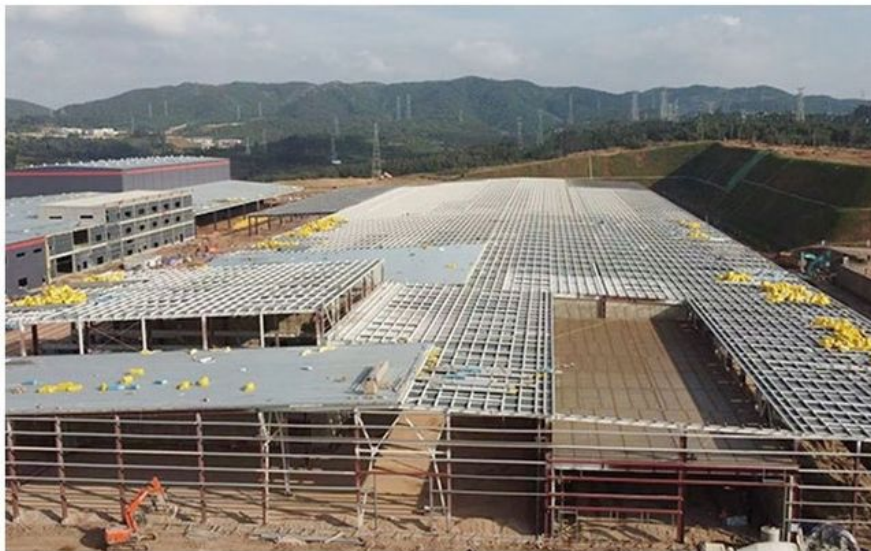
Shopping Center



Greenhouse



Farm





Stable performance

02

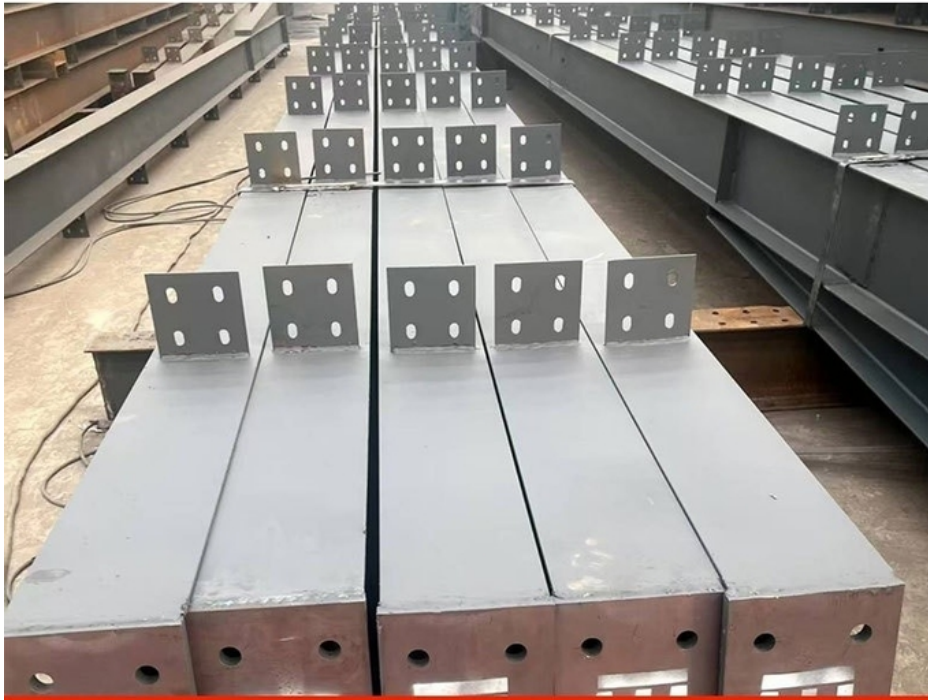
It can still maintain high strength at high temperature, has good plasticity and toughness, and has good weldability.



Easy to move

03

The components are connected by bolts, which is very convenient for disassembly and installation and can be recycled



Short construction period

04

Using standardized design and factory prefabrication technology, the construction period is greatly shortened, usually only the 1/3 of traditional concrete buildings, saving time and cost

ARE YOU TROUBLED BY THESE ISSUES?
Are you worried about these problems?



- ✗ Don't know how to choose the product? What if the product quality is not good?
- ✗ The product is not guaranteed, after-sales service is not timely? The use cost is too high?

.....

Buy steel structure factory you meet Those pits

Support customized reliable quality

BUY VALVES YOU ENCOUNTER THOSE PITS



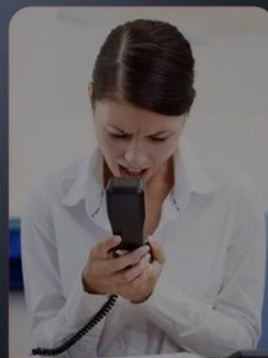
Quality

Select inferior metal materials
Heavy losses



Price

Product cost is not high
Lead to the loss of funds



Services

There are quality problems
Businessmen perfunctory



There's no reason not to pick me

Solve your concerns

Years of industry experience to create a good steel structure workshop

FOCUS ON STEEL INDUSTRY TEN YEARS, STRICTLY CONTROL THE PRODUCTS, OBTAIN DIRECT MANUFACTURERS SUPPLY, RESERVES CAN BE CUSTOMIZED PRODUCTION, WOOD ON SHELVES INDUSTRY TEN YEARS



Reasonable price

Team services for you
Customer Satisfied Products

GOOD MATERIAL QUALITY



Focus on quality

Focus on industry years of experience
Looking forward to working with you

NO DEALER FOR DIRECT SALES



Intimate after-sales

Quality inspection qualified delivery
Customer service online Q & A

CUSTOMIZABLE ON DEMAND

Strict testing quality can be customized according to customer demand support



Baodu International Advanced Construction Material Co., Ltd.



+86 13717927965



chunlei.song@baodu.com



baodupanel.com

Room 1101, Building 6, Yard 9, Hongye Road, Daxing District, Beijing