

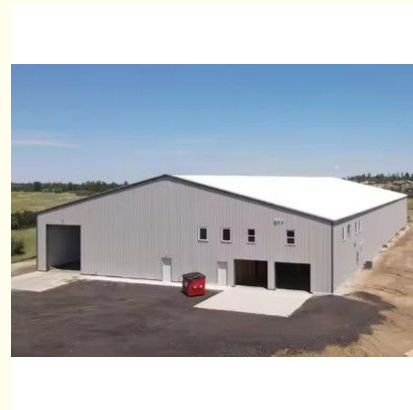
Prefabricated Steel Structure Warehouse Workshop Industrial Building Commercial Building Steel Structure Warehouse

Our Product Introduction

for more products please visit us on baodupanel.com

Basic Information

- Place of Origin: Hebei, China
- Brand Name: BAODU
- Certification: ISO9001, CE
- Model Number: Steel Warehouse
- Minimum Order Quantity: 100 square meters
- Price: \$20-40 square meter
- Packaging Details: In general, for steel structure, we use the steel frame packing to keep goods not to be broken. For sandwich panel and color steel sheet, we use the plastic packing. If the clients need special packing will according to their requirements.
- Delivery Time: 45 days
- Payment Terms: L/C, D/A, D/P, T/T, Western Union, MoneyGram
- Supply Ability: 5000 Square Meter/Square Meters per Day



Product Specification

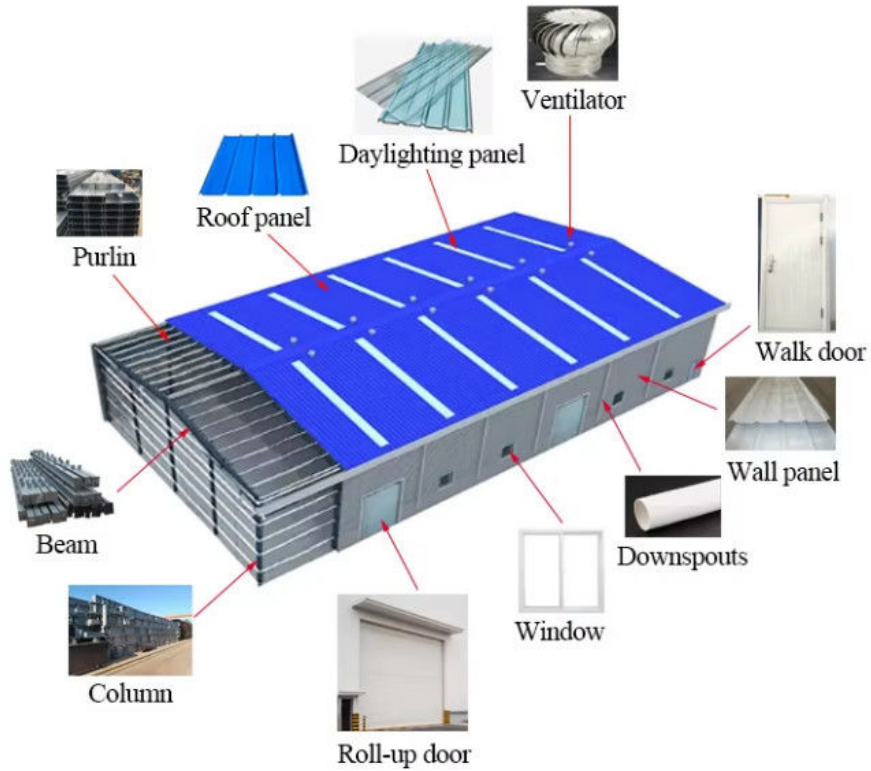
- Product Name: Prefabricated Steel Structure Warehouse Workshop Industrial Building Commercial Building Steel Structure Warehouse
- Main Frame: Welded H Steel Beam, Steel Truss
- Wall Cladding: EPS/Rockwool/Fiberglass Wool/PU Sandwich Panel Or Steel Sheet
- Secondary Frame: C&Z Purlin, Brace
- Application: Steel Storage, factory Or Logistic Warehouse
- Roof Cladding: EPS/Rockwool/Fiberglass Wool/PU Sandwich Panel Or Steel Sheet
- Drawing Design: SAP2000/AutoCAD /PKPM /3D3S/TEKLA
- Surface Treatment: Hot Dip Galvanized And Painted
- Performance: Safety, Water-proof, Sound Insulated Hear-preservation Etc.



Product Description

Prefabricated Steel Structure Warehouse Workshop Industrial Building Commercial Building Steel Structure Warehouse

Products Description:



Product Name	Prefabricated Steel Structure Warehouse Workshop Industrial Building Commercial Building Steel Structure Warehouse	
Main Steel	Column	Q235, Q345 Welded H Section Steel
	Beam	Q235, Q345 Welded H Section Steel
Secondary Steel Frame	Purlin	Q235 C and Z purlin
	Angle brace	Q235 Angle Steel
	Tie Rod	Q235 Circular Steel Tube
	Brace	Q235 Round Bar
	Vertical and Horizontal	Q235 Angle Steel, Round Bar or Steel Tube
Maintenance System	Roof Panel	EPS Sandwich Panel / Glass Fiber Sandwich Panel / Rock Wool Sandwich Panel / Pu Sandwich Panel
	Wall Panel	Sandwich Panel / Corrugated Steel Sheet
Accessories	Window	Aluminum Alloy Window / PVC Window / Sandwich Panel Window
	Door	Sliding Sandwich Panel Door / Rolling Metal Door / Personal Door
	Gutter + Downspout	Galvanized + PVC
Others	Anchor bolt, high strength bolts, ordinary bolts, self-tapping screw, glass adhesive, fans, skylight panel, etc.	

1. Baodu Prefabricated Steel Structure Building Products:

Lightweight Steel Structures: Used for small to medium-sized buildings such as warehouses, factories, and commercial spaces. They are cost-effective, lightweight, and quick to assemble. **Heavy Steel Structures:** Suitable for large-scale buildings like industrial factories, bridges, airports, and stations, these structures have high load-bearing capacities. **Multi-story & High-rise Steel Structures:** These are used in office buildings, residential complexes, and mixed-use developments. They offer seismic resistance and fast construction timelines.

2. Industrial Steel Structures building:

Factories/Warehouses: Steel structures for industrial facilities, including both single-story and multi-story factory buildings. **Storage Warehouses:** Tailored steel structures for storage and logistics needs.

3. Special Steel Structures

Prefabricated Steel Modules: Used for modular construction, allowing for quick installation of pre-assembled units.

Space Frame Structures: Ideal for large-span structures like stadiums, exhibition halls, and airport terminals.

Steel Curtain Walls: Used for building facades in commercial office buildings, creating a modern aesthetic while offering durability.

4. Supporting Products & Services

Roof and Wall Systems: Including color-coated steel panels, insulated sandwich panels, and other weather-resistant materials for efficient thermal insulation and waterproofing. **Corrosion & Fire Protection Coatings:** Specialized coatings to protect steel from corrosion and to enhance fire safety. **Design and Installation Services:** Comprehensive services, including structural design, engineering, and on-site construction support.

Project Cases:



BAODU Prefab Steel Warehouse is a versatile and reliable solution for various product application occasions and scenarios. With its durable construction and high-quality materials, this steel warehouse is suitable for a wide range of purposes. Whether you need a building for galvanized storage, light steel building, workshop industrial steel, or any other commercial or industrial use, the BAODU Steel Warehouse is an ideal choice.

Manufactured in Hebei, China, this steel warehouse meets the highest standards of quality and safety. It is certified with ISO9001 and CE, ensuring that it complies with all relevant regulations and requirements. The minimum order quantity is discussible, making it easy to tailor the purchase to your specific needs.

With a reasonable price and excellent packaging details, the BAODU Steel Warehouse offers great value for money. The steel frame packing ensures that the goods are protected during transportation, while the plastic packing for sandwich panels and color steel sheets keeps them secure. Special packing options are also available upon request.

Delivery time for the BAODU Steel Warehouse is just 21 days, allowing for quick and efficient installation. Multiple payment terms are accepted, including L/C, D/A, D/P, T/T, Western Union, and MoneyGram, making the purchasing process convenient for customers. The supply ability of 10000 square meters per month ensures that orders can be fulfilled promptly.

With a tolerance of $\pm 1\%$, the BAODU Steel Warehouse is designed to meet strict accuracy requirements. The wall cladding options include EPS, Rockwool, Fiberglass Wool, PU Sandwich Panel, or Steel Sheet, providing flexibility for different preferences. The aluminum alloy and plastic steel windows offer both durability and aesthetics.

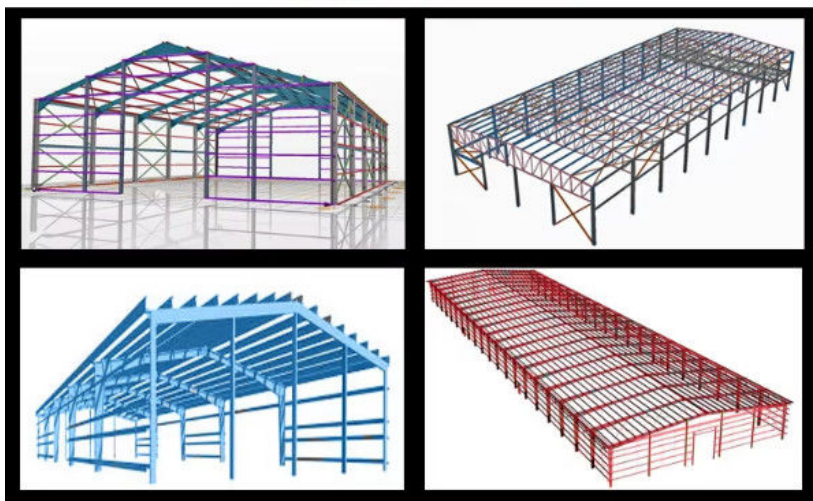
Installation of the BAODU Steel Warehouse is easy and straightforward, making it a practical choice for various construction projects. Whether you need a storage facility, workshop, or industrial building, this prefabricated steel warehouse delivers reliable performance and long-lasting quality.

We can provide :

1. Customization Service

We have a professional design team about 40 people, with 10 years design experience. We can meet your individual needs.

And multi-type steel components, roof and wall panels, doors and windows for choosing.



Please kindly inform us of the information below if you are interested in our products.

1. Project Progress: Is Land Purchased? Is it licensed by the government?
2. Usage: for warehouse, workshop, showroom, etc.
3. Location: In which country will it be built?

4. Local Climate: Wind speed, Snow load (max. Wind speed)
5. Design: Please provide the design drawing. Or do you need us to design for you?
6. Dimension: Length*width*height
7. Crane Beam: Do you need crane beam inside the steel structure?
8. Roof and Wall: determine the panel material, such as color steel panel, and metal sandwich panel.
9. Windows and Doors: what material, quantity, and type?

2. Strict Quality Inspection

With good quality steel material, we have AWS-D1.1/D1.5 welding quality system and professional CWI welding inspector to ensure high quality of the product.

3. Shortest Delivery Time

We have 2 modern factories and 3 production lines with a total area of 150000 square meters to produce. We guarantee a warehouse of 5000 square meters and delivery within 30 days.

4. Production Visualization

We can provide you with picture,video information of all production links, from raw materials to steel processing, the whole process of visual production. You can even video call us to watch workshop production.

5. Packing and Delivery

Container and pallet packing will protect the surface paint or zinc of the steel structures. In order to facilitate your installation, we will mark each component in sequence according to the drawings.

6. Installation Guide

Installation instruction and video will be provide, we can also send our engineers to your site as installation guide, they will teach your people how to build project.

Packing and Shipping:



Product Packaging:

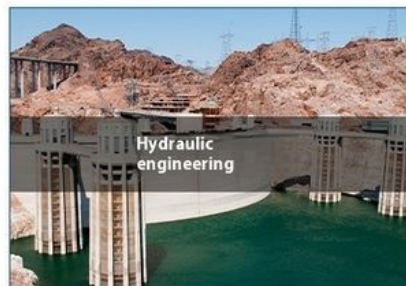
Our Prefab Steel Warehouse is carefully packaged to ensure safe transportation and delivery. Each component is securely wrapped and labeled for easy identification during the assembly process.

Shipping:

We offer worldwide shipping for our Prefab Steel Warehouse. Our logistics team works diligently to arrange efficient transport and ensure timely delivery to your desired location. Shipping fees may vary depending on the delivery destination and order quantity.

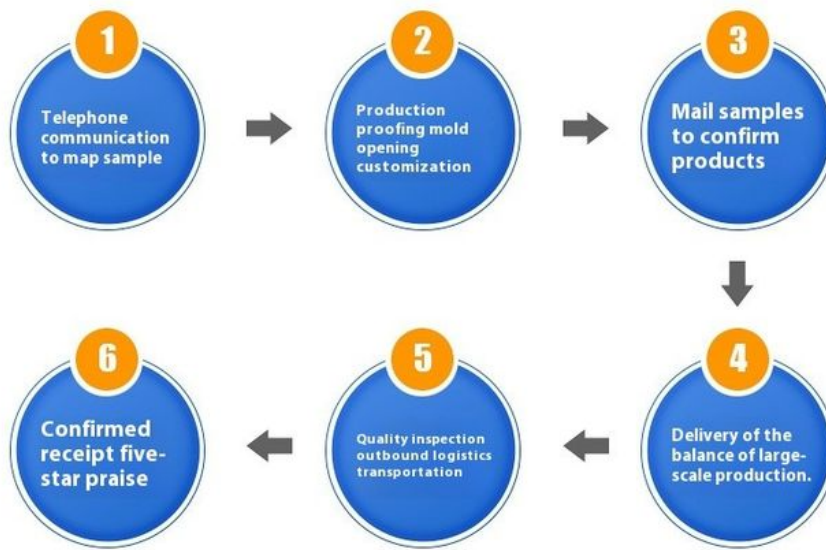
Applicable scope of products

PRODUCT RANCE



Product customization process

PRODUCT CUSTOMIZATION PROCESS





Buyers Notice

If you have any questions, please contact customer service before shooting



Pre-sales consultation

Please carefully check the product size table and product description, specifications and sizes before placing an order. In addition, due to changes in inventory at any time, please contact us before purchasing and confirm whether the size you need is available.



About color difference

The pictures are taken in kind, but due to the light and the display, the pictures you see may have slight color difference, which is inevitable. Please understand that if you cannot accept the buyer, please buy carefully.



About Receiving

When the buyer accepts the goods, when the delivery man is present, please check whether the goods in the package are in good condition and sign them. If the goods are signed, it means that the goods are in good condition. If any damage is found in the package, please respond to the delivery man in time. If any problem occurs after acceptance, you will not be responsible.



Baodu International Advanced Construction Material Co., Ltd.



+86 13717927965



chunlei.song@baodu.com



baodupanel.com

Room 1101, Building 6, Yard 9, Hongye Road, Daxing District, Beijing