



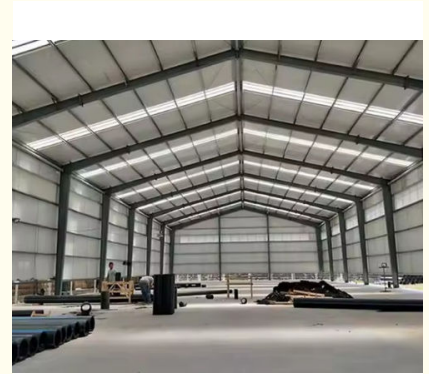
Quick Build Steel Warehouse Building Hot Dip Galvanized And Painted Design For Storage

Our Product Introduction

for more products please visit us on baodupanel.com

Basic Information

- Place of Origin: Hebei, China
- Brand Name: BAODU
- Certification: ISO9001, CE
- Model Number: Steel Warehouse
- Minimum Order Quantity: 100 square meters
- Price: \$25-35 square meter
- Packaging Details: In general, for steel structure, we use the steel frame packing to keep goods not to be broken. For sandwich panel and color steel sheet, we use the plastic packing. If the clients need special packing will according to their requirements.
- Delivery Time: 45 days
- Payment Terms: L/C, D/A, D/P, T/T, Western Union, MoneyGram
- Supply Ability: 5000 Square Meter/Square Meters per Day



Product Specification

- Product Name: New Design Low Cost Quick Build Steel Structure Warehouse Storage Warehouse Building
- Main Frame: Welded H Steel Beam, Steel Truss
- Wall Cladding: EPS/Rockwool/Fiberglass Wool/PU Sandwich Panel Or Steel Sheet
- Secondary Frame: C&Z Purlin, Brace
- Application: Steel Storage, factory Or Logistic Warehouse
- Roof Cladding: EPS/Rockwool/Fiberglass Wool/PU Sandwich Panel Or Steel Sheet
- Drawing Design: SAP2000/AutoCAD /PKPM /3D3S/TEKLA
- Surface Treatment: Hot Dip Galvanized And Painted
- Design Style: Modern
- Performance: Safety, Water-proof, Sound Insulated Hear-

Product Description

New Design Low Cost Quick Build Steel Structure Warehouse Storage Warehouse Building

Project Cases:



Warehouse
Uruguay



Warehouse
Guinea



Workshop
Cyprus



Warehouse frame
UAE



Warehouse
USA



Warehouse
Thailand



STEEL STRUCTURE WORKSHOP



STEEL STRUCTURE WAREHOUSE



STEEL STRUCTURE HANGAR



CHICKEN POULTRY HOUSE



PREFAB HOUSE

BAODU Prefab Steel Warehouse is a versatile and reliable solution for various product application occasions and scenarios. With its durable construction and high-quality materials, this steel warehouse is suitable for a wide range of purposes. Whether you need a building for galvanized storage, light steel building, workshop industrial steel, or any other commercial or industrial use, the BAODU Steel Warehouse is an ideal choice.

Manufactured in Hebei, China, this steel warehouse meets the highest standards of quality and safety. It is certified with ISO9001 and CE, ensuring that it complies with all relevant regulations and requirements. The minimum order quantity is discussible, making it easy to tailor the purchase to your specific needs.

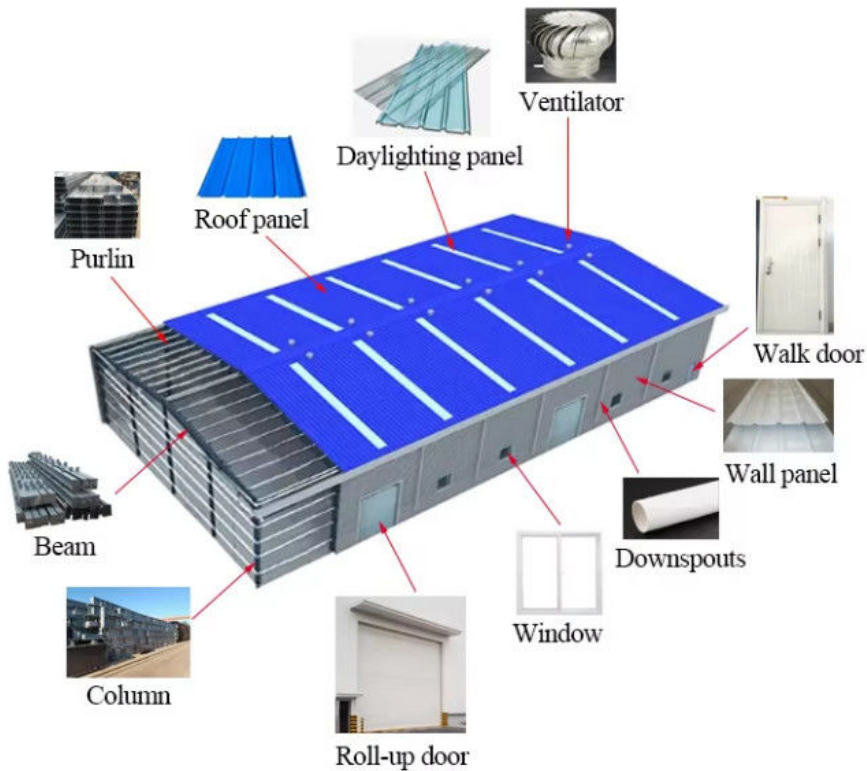
With a reasonable price and excellent packaging details, the BAODU Steel Warehouse offers great value for money. The steel frame packing ensures that the goods are protected during transportation, while the plastic packing for sandwich panels and color steel sheets keeps them secure. Special packing options are also available upon request.

Delivery time for the BAODU Steel Warehouse is just 21 days, allowing for quick and efficient installation. Multiple payment terms are accepted, including L/C, D/A, D/P, T/T, Western Union, and MoneyGram, making the purchasing process convenient for customers. The supply ability of 10000 square meters per month ensures that orders can be fulfilled promptly.

With a tolerance of $\pm 1\%$, the BAODU Steel Warehouse is designed to meet strict accuracy requirements. The wall cladding options include EPS, Rockwool, Fiberglass Wool, PU Sandwich Panel, or Steel Sheet, providing flexibility for different preferences. The aluminum alloy and plastic steel windows offer both durability and aesthetics.

Installation of the BAODU Steel Warehouse is easy and straightforward, making it a practical choice for various construction projects. Whether you need a storage facility, workshop, or industrial building, this prefabricated steel warehouse delivers reliable performance and long-lasting quality.

Products Description:



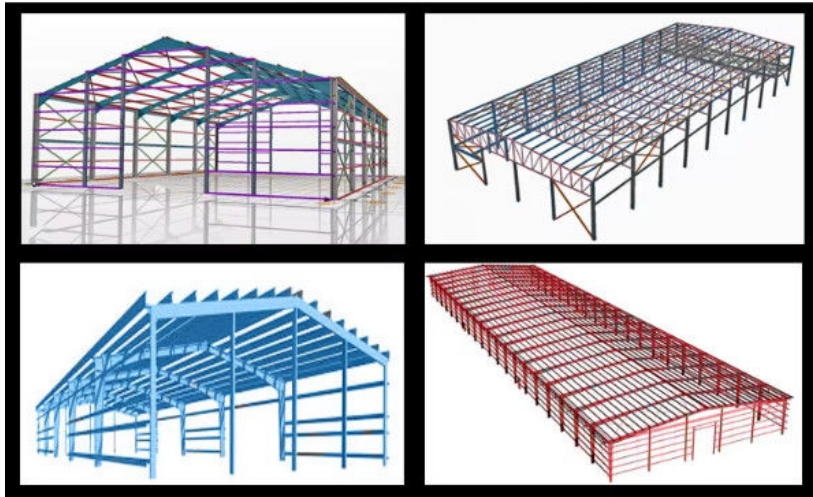
Product Name	New Design Low Cost Quick Build Steel Structure Warehouse Storage Warehouse Building	
Main Steel	Column	Q235, Q345 Welded H Section Steel
	Beam	Q235, Q345 Welded H Section Steel
Secondary Steel Frame	Purlin	Q235 C and Z purlin
	Angle brace	Q235 Angle Steel
	Tie Rod	Q235 Circular Steel Tube
	Brace	Q235 Round Bar
	Vertical and Horizontal	Q235 Angle Steel, Round Bar or Steel Tube
Maintenance System	Roof Panel	EPS Sandwich Panel / Glass Fiber Sandwich Panel / Rock Wool Sandwich Panel / Pu Sandwich Panel
	Wall Panel	Sandwich Panel / Corrugated Steel Sheet
Accessories	Window	Aluminum Alloy Window / PVC Window / Sandwich Panel Window
	Door	Sliding Sandwich Panel Door / Rolling Metal Door / Personal Door
	Gutter + Downspout	Galvanized + PVC
Others	Anchor bolt, high strength bolts, ordinary bolts, self-tapping screw, glass adhesive, fans, skylight panel, etc.	

We can provide : _____

1. Customization Service

We have a professional design team about 40 people, with 10 years design experience. We can meet your individual needs.

And multi-type steel components, roof and wall panels, doors and windows for choosing.



Please kindly inform us of the information below if you are interested in our products.

1. Project Progress: Is Land Purchased? Is it licensed by the government?
2. Usage: for warehouse, workshop, showroom, etc.
3. Location: In which country will it be built?
4. Local Climate: Wind speed, Snow load (max. Wind speed)
5. Design: Please provide the design drawing. Or do you need us to design for you?
6. Dimension: Length*width*height
7. Crane Beam: Do you need crane beam inside the steel structure?
8. Roof and Wall: determine the panel material, such as color steel panel, and metal sandwich panel.
9. Windows and Doors: what material, quantity, and type?

2. Strict Quality Inspection

With good quality steel material, we have AWS-D1.1/D1.5 welding quality system and professional CWI welding inspector to ensure high quality of the product.

3. Shortest Delivery Time

We have 2 modern factories and 3 production lines with a total area of 150000 square meters to produce. We guarantee a warehouse of 5000 square meters and delivery within 30 days.

4. Production Visualization

We can provide you with picture,video information of all production links, from raw materials to steel processing, the whole process of visual production. You can even video call us to watch workshop production.

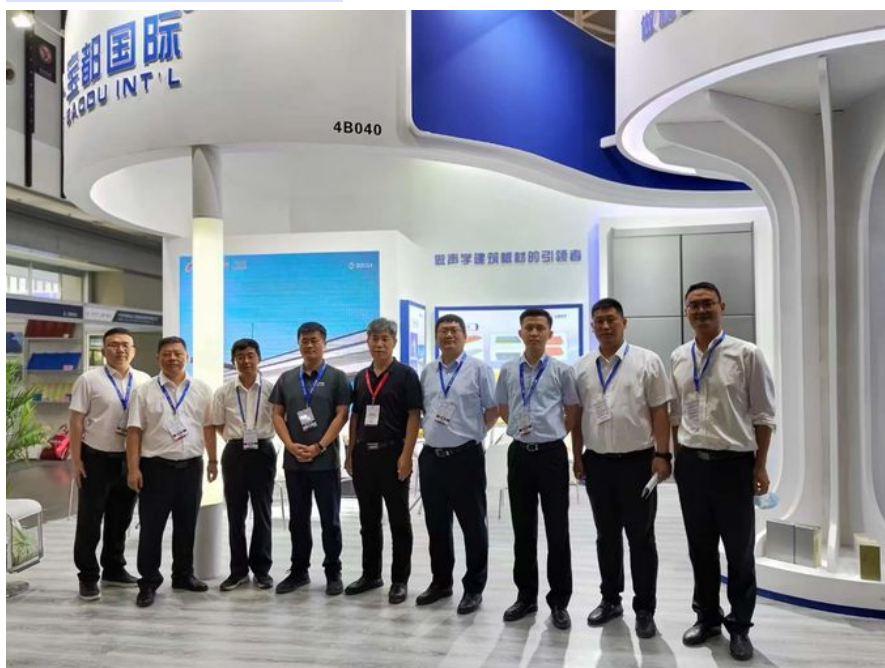
5. Packing and Delivery

Container and pallet packing will protect the surface paint or zinc of the steel structures. In order to facilitate your installation, we will mark each component in sequence according to the drawings.

6. Installation Guide

Installation instruction and video will be provide, we can also send our engineers to your site as installation guide, they will teach your people how to build project.

Support and Services:



The Product Technical Support and Services for the Prefab Steel Warehouse include:

- Assistance with assembly and installation instructions
- Troubleshooting guidance for any structural issues
- Information on maintenance and upkeep of the steel components
- Consultation on customization options for specific project requirements

Packing and Shipping:



Product Packaging:

Our Prefab Steel Warehouse is carefully packaged to ensure safe transportation and delivery. Each component is securely wrapped and labeled for easy identification during the assembly process.

Shipping:

We offer worldwide shipping for our Prefab Steel Warehouse. Our logistics team works diligently to arrange efficient transport and ensure timely delivery to your desired location. Shipping fees may vary depending on the delivery destination and order quantity.

FAQ:

1. What kind of customer service do you provide?

We offer comprehensive customer service, including basic design, supporting facilities procurement, and the option to dispatch installation guidance.

2. How about the customer reviews of your company?

We are proud to have received consistently high five-star reviews from our customers, which stand as a testament to our commitment to quality and service.

3. What is your quality inspection process like?

Our strict quality inspection process ensures that every product meets the highest standards of excellence. From raw materials to finished goods, each stage is meticulously inspected to guarantee superior quality.

4. Can you send engineers or a whole team to install my project?

We will give detailed installation drawings for free. We can send engineers as an installation director or a team upon request.

5. Do you accept container loading inspection?

You are welcomed to send an inspector, not only for the container loading, but any time during the production time.

6. Do you offer designing service for us?

Yes, we could design full solution drawings as your requirements. By using AutoCAD, PKPM, MTS, 3D3S, Tarch, Tekla Structures (Xsteel) and etc. we can design complex industrial buildings like office mansions, super markets, auto dealer shops, shipping malls, 5-star hotels.

7. What is the delivery time?

Delivery time depends on order quantities. In general, the delivery time to the nearest seaport in China will be 40 days after receiving the deposit.

8. How can I get a quotation for my projects?

You can contact us by email, phone manager and so on 24*7 and you will get a reply within 8 hours.

9. What certifications has your company passed?

Our company has passed professional certifications such as IOS9000, CE, and SGS, ensuring that our products and services meet international standards.



Baodu International Advanced Construction Material Co., Ltd.

+86 13717927965

chunlei.song@baodu.com

baodupanel.com

Room 1101, Building 6, Yard 9, Hongye Road, Daxing District, Beijing