

Prefabricated Steel Structure Warehouse For Steel Structural Fabrication Construction Workshop Hangar

Our Product Introduction

for more products please visit us on baodupanel.com

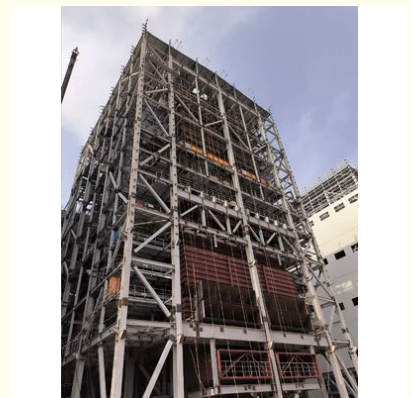
Basic Information

- Place of Origin: Hebei, China
- Brand Name: BAODU
- Certification: ISO9001, CE
- Model Number: Steel Warehouse
- Minimum Order Quantity: Discussible
- Price: Reasonable
- Packaging Details: In general, for steel structure, we use the steel frame packing to keep goods not to be broken. For sandwich panel and color steel sheet, we use the plastic packing. If the clients need special packing will according to their requirements.
- Delivery Time: 15-21 days
- Payment Terms: L/C, D/A, D/P, T/T, Western Union, MoneyGram
- Supply Ability: 10000 Square Meter/Square Meters per Month



Product Specification

- Product Name: Prefabricated Construction Workshop Building Hangar Structural Steel Steel Structure Warehouse
- Warranty: 50 Year
- Keyword: Steel Structure Building Warehouse
- Weather Resistance: High
- Main Frame: Solid H-shape Steel Beam
- Installation: Engineer Guidance
- Purlin: C/Z Galvanized Steel
- Drawing Design: Customers' Request
- Window: Sliding Window, PVC Window Or Aluminium Window
- Processing Service: Bending, Welding, Decoiling, Cutting, Punching



Prefabricated Construction Workshop Building Hangar Structural Steel Steel Structure Warehouse

Product Description:

BAODU Steel Structure is the professional manufacturer of Steel Structure Warehouse, Workshop, Pre-engineered building. Pre-engineered steel structure warehouse is steel structure built over a structural concept of primary members, secondary members, roof and wall sheeting connected to each other and various other building components. These buildings can be provided with different structural and non-structural additions such as skylights, wall lights, turbo vents, ridge ventilators, louvers, roof monitors, doors & windows, trusses, mezzanine floors, fascias, canopies, crane systems, insulation etc., based on the customer's requirements.

Steel Structure Workshop

The primary difference between the two steel building types is the primary framing system. The primary framing system is the core framing of a building. Welded frame buildings are made with frames from steel flat bars and flat sheet pieces that are welded together. The columns and rafters are typically tapered, being narrow at the foundation and peak and wider at the rafter/column connection.

Steel Structure Workshop

A cold-formed building's main frame is typically both bolted and screwed together using pre-drilled plates. Cold-formed steel buildings can require some cutting/coping and drilling of braces on site. A welded frame steel building's main frame is bolted together with plates already welded in place by our certified welders in our weld shop. Welded frame buildings can require some drilling on site.

Steel Structure Workshop

The quality of the materials used in pre-engineered steel buildings plays a huge role in how long they'll last. When you're checking out options for pre-engineered steel buildings, make sure to look at the quality of the steel, insulation, and roofing materials to ensure they can handle the unique environmental conditions in the region.

1. Primary Framing

Primary Frames are the main load-carrying structural steel components. They may be Clear-span Rigid Frames, Continuous Beam Frames, or Post & Beam Frames. Primary frames are designed in accordance with the steel construction manual published by American Institute of Steel Construction (AISC). Manufacturing dimensional tolerances are in accordance with the requirements of 'Metal Building Manufacturers Association' (MBMA) of USA, "Low Rise Building Systems Manual". Besides AISC and MBMA, we also design buildings with IS-875, 1984 and IS-875, 2007. Built-up sections are fabricated from hot rolled steel plates conforming to ASTM A 572M grade or equivalent with minimum yield strength of 345N/mm² (50ksi). The most common primary framing systems are illustrated here. All structures shown are symmetrical about the ridge line. Framing systems unsymmetrical about the ridge line and Multi span Framing Systems with unequal width modules are possible too. Practically any frame geometry can be erected.

2. Secondary Framing (Bracing, Z and C section purlin)

Purlin, tie bar and bracing are secondary structural members used to support the wall and roof cladding. Secondary members as purlin, tie bar, column bracing and horizontal bracing connect the main frame and help in resisting part of the longitudinal loads that are applied on the building such as wind and earthquake loads. Steel purlin is available in high grade steel conforming to GB/T 2518-2008, Q235B/Q345B Grade or equivalent, available in 1.8 mm, 2.0 mm, 2.2 mm, 2.5 mm and 3.0 mm thickness. The purlin come with a galvanized sheet. Column bracing is a connecting member set between two adjacent columns to ensure the overall stability of the building structure, improve lateral stiffness and transfer longitudinal horizontal force. Column bracing will be round steel or angle steel according to the building need.

3. Steel Decking Floor

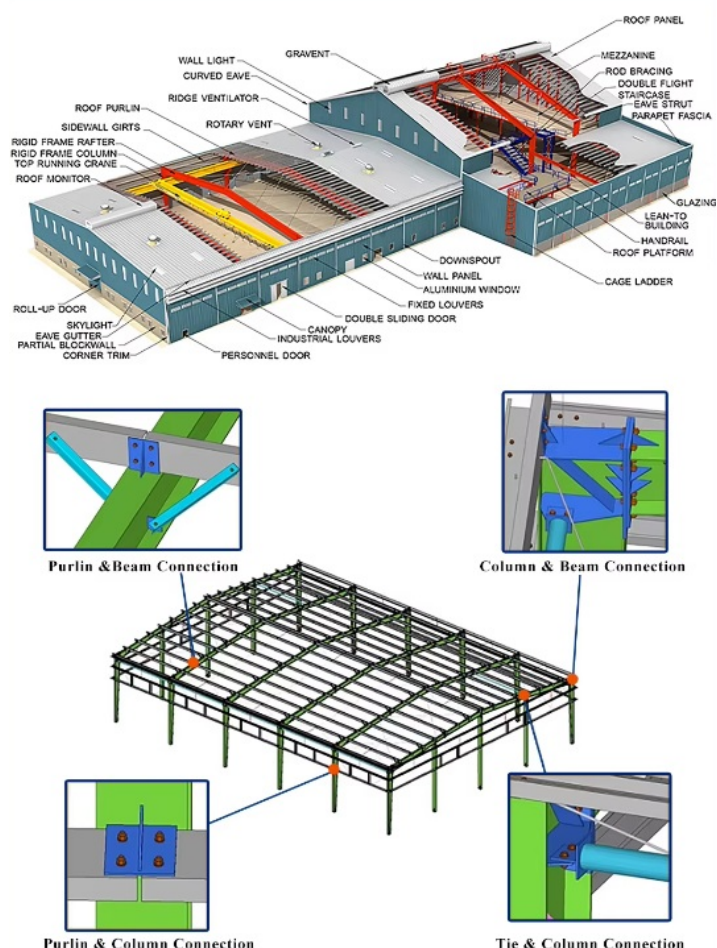
The pressed steel plates supporting the floor concrete are called profiled plates, also called floor bearing board. The steel decking board are widely used in multi-storey buildings such as power plant, exhibition hall, steel structure workshop, cement warehouse, steel structure office, airport terminal, railway station, stadium, concert hall, grand theater, large supermarket, logistics center, Olympic venues and sports venues and other steel structure buildings. It can adapt to the main steel structure rapid construction requirements, can provide a firm platform in a short time, and can take flow repetitive construction operation, laid a number of floors decking board, and pouring concrete slab.

Features:

Material list	
Project sample	Steel structure warehouse
Building size	Such as 78*30*8.5 m/ customized
Main steel structure	
Steel column	H(300-550)*200*6*10 mm , steel Q345
Steel beam	H(300-550)*180*6*8 mm, H 300*180*6*8 mm, steel Q345
Second steel structure	
Roof purline	C180*75*50*2.5 mm
Wall purline	C180*75*50*2.5 mm
Cross support	20 round steel bar, steel Q 235
Column bracing	20 round steel bar, steel Q 235
Angle brace	L 50*4 Angle steel , steel Q 235
Tie bar	89*3 mm, steel Q235
Roof and wall panel	

Roof panel	50/80/100/120/150/200 mm sandwich panel (EPS, PU, Rock wool, Glass wool)
Wall panel	50/75/100/120/150/200 mm sandwich panel (EPS, PU, Rock wool, Glass wool)
Rolling up door	Automatic rolling up door
Single wing door	Sandwich panel door
Window	Aluminum/ PVC sliding window with single glass
Fittings	Glass adhesive, self-tapping screw, etc
Other fittings	
Embedded	M 24 steel Q 235, process
Intensive bolt	Grade 10.9
Ordinary bolt	Grade 4.85

Technical Parameters:



Please kindly inform us of the information below if you are interested in our products.

1. Project Progress: Is Land Purchased? Is it licensed by the government?
2. Usage: for warehouse, workshop, showroom, etc.
3. Location: In which country will it be built?
4. Local Climate: Wind speed, Snow load (max. Wind speed)
5. Design: Please provide the design drawing. Or do you need us to design for you?
6. Dimension: Length*width*height
7. Crane Beam: Do you need crane beam inside the steel structure?
8. Roof and Wall: determine the panel material, such as color steel panel, and metal sandwich panel.
9. Windows and Doors: what material, quantity, and type?

Drawing Design

We need the following information to make a design for you: the specifications and use of the steel

building, thermal and lighting conditions, window and door requirements, wind/snow load, and whether it has a crane.

1 Location (where will be built?) _____country, area

2 Size: Length*width*height _____mm*_____mm*_____mm

3 wind load (max. Wind speed) _____kn/m2, _____km/h, _____m/s

4 snow load (max. Snow height) _____kn/m2, _____mm

5 anti-earthquake _____level

6 brickwall needed or not If yes, 1.2m high or 1.5m high

7 thermal insulation If yes, EPS, fiberglass wool, rockwool, PU sandwich panels will be suggested; If not, the metal steel sheets

will be ok. The cost of the latter will be much lower than that of the former.

8 door quantity & size _____units, _____(width)mm*_____ (height)mm

9 window quantity & size _____units, _____(width)mm*_____ (height)mm

10 crane needed or not If yes, _____units, max. Lifting weight _____tons; Max. Lifting height _____m.

Models Design

Our company offers full design and detailing services to every customer.(PKPM, AutoCAD, Tekla).And our design team turns your requirements into clear drawings, offer 3D drawings for installation guidance, and ensures every detail is easily understandable.

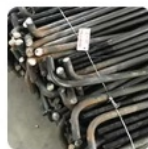
We can provide : _____

1.Customization Service

We have a professional design team about 20 people, with 10 years design experience. We can meet your individual needs.

And multi-type steel components, roof and wall panels, doors and windows for choosing.

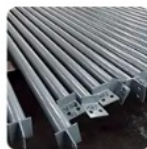
Products materials



Embedded bolts
for foundation



Structure frame
for columns or
beams



Bracing material



Connected plate



Purlin



Cladding material
1 -steel sheet



Cladding material
2- EPS panel



Cladding material
3-glass wool panel



Cladding material
4-rock wool panel



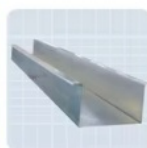
Door option
1-sliding door



Cladding material
2-rolling door



Aluminum window



Water gutter



Water pipe



Sealing material



Ventilation
equipment on roof



FRP panel for
lighting



Bolts



Steel decking



Stair (if needed)

2. Strict Quality Inspection

With good quality steel material, we have AWS-D1.1/D1.5 welding quality system and professional CWI welding inspector to ensure high quality of the product.

3. Shortest Delivery Time

We have 2 modern factories and 3 production lines with a total area of 150000 square meters to produce. We guarantee a warehouse of 5000 square meters and delivery within 30 days.

4. Production Visualization

We can provide you with picture,video information of all production links, from raw materials to steel processing, the whole process of visual production. You can even video call us to watch workshop production.

5. Packing and Delivery

Container and pallet packing will protect the surface paint or zinc of the steel structures. In order to facilitate your installation, we will mark each component in sequence according to the drawings.

6. Installation Guide

Installation instruction and video will be provide, we can also send our engineers to your site as installation guide, they will teach your people how to build project.

Installation scene: _____



1. Choose steel plate, quality inspection after the start of the material



2. Distinguish the steel plate material, waiting for cutting



3. According to the drawing specification, laser cutting into the corresponding component size



4. Drill holes into some steel plate parts



5. The steel plate was shot blasted to remove rust



6. Start assembling the steel plate and spot welding it



7. Fully welded steel plate, perfect weld ensures the strength and beauty of steel structure



8. Inspect welded steel structure, prepare for galvanizing or painting



9. Spray paint and galvanize steel structure according to technical requirements of drawings



10. Spray paint and galvanize steel structure according to technical



11. Steel structure construction finished effect



12. Exterior wall insulation system construction effect

THREE ways to help you on the installation:

1. We can offer you the manual include the photos and drawings, or some videos for help you on the installation. And you will organize the local people to install it. 93% of our clients finished their houses in this way.
2. We can send our people to your site to guide your people to install. Or send team people (3-5 people) to your site to install for you. This way is most easy way, but you need to pay their round-way tickets, local food, accommodation, transportation, communication and salary, and also their security on the site. Almost 5% of our clients choose this way. And in the normal we will require the order should be more than 100000USD.
3. You can send your people (engineers or the technician) to our co- mpany to study the installation details. 2% of our clients choose this way for their orders.

Applications:



**MULTI-STOREY BUILDING
IN PHILIPPINES**



**HEAVY WORKSHOP
IN AUSTRALIA**



**STEEL WAREHOUSE
IN GERMANY**



**STEEL BUILDING
IN ZIMBABWE**



**FACTORY WAREHOUSE
IN MALAWI**



**SHOPPING MALL
IN PHILIPPINES**



**PREFABRICATED SHED
IN CANADA**



**PREFAB WAREHOUSE
IN CANADA**



**METAL WORKSHOP
IN INDONESIA**

Steel structure buildings serve a wide range of purposes, including warehouses, workshops, factories, cold

storage facilities, high-rise buildings, shopping malls, power plants, distribution centers, pedestrian bridges, steel-structured hotels, prefabricated public schools, sports arenas and halls, car parking centers, airplane hangars and aviation facilities, church buildings and community centers, poultry farms, agricultural buildings and barns, storage sheds, self-storage buildings, greenhouses, garages, commercial buildings, industrial facilities, and much more.

Project Cases:

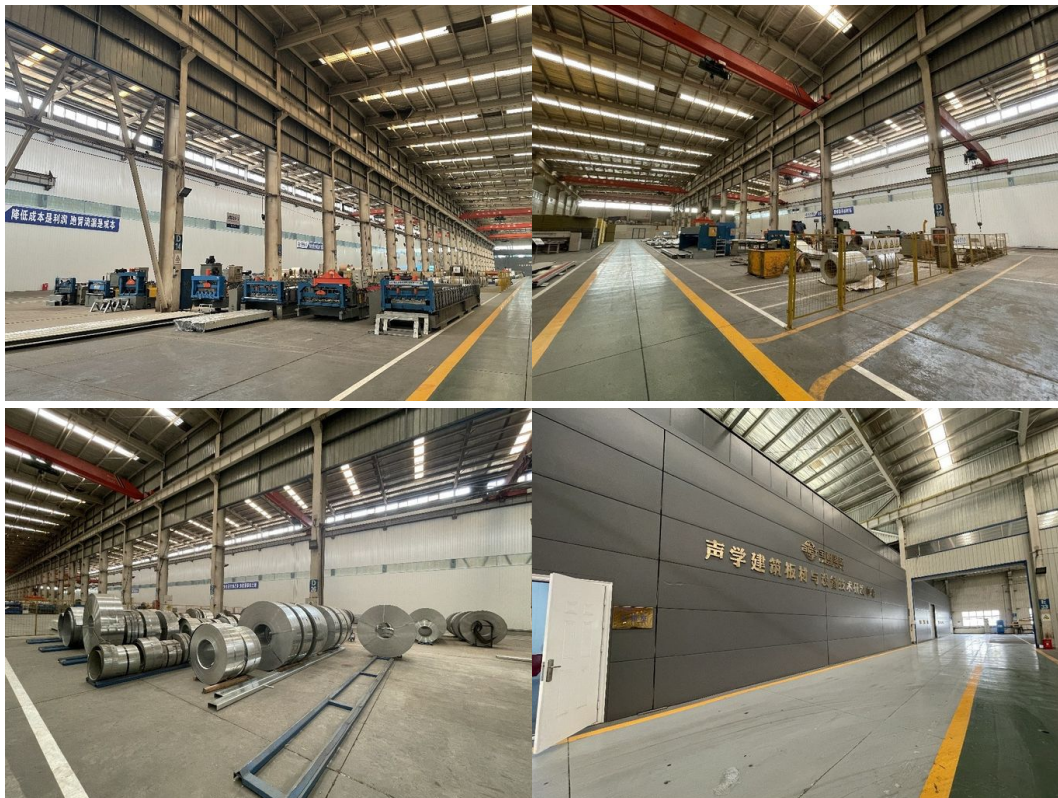


Gas Turbine Combined Cycle Power Station Expansion Project in Basra Iraq



Clean Coal Fired Power Plant Phase I (4x600mw net) Project in Hasyan Dubai

Our capacity and certification:





Support and Services:



<p>Baodu</p> <p>Song Chunlei Overseas Manager</p> <p>Baodu International Engineering Technology Co., Ltd Add : Floor 11, Jiayue Square, Xihongmen, Daxing District, Beijing, China 100162 Tel : +86-10-60256462 Fax : +86-10-61225599 Mobile : +86-13717927965 Email : chunlei.song@baodu.com Website: www.baodu.com</p>	<p>Business Scope:</p> <table border="0"> <tr> <td>Prefab House</td> <td>Sandwich Panel</td> </tr> <tr> <td>Container House</td> <td>Steel Structure</td> </tr> </table>	Prefab House	Sandwich Panel	Container House	Steel Structure
Prefab House	Sandwich Panel				
Container House	Steel Structure				

Our team of experts is available to provide technical support and services for the Prefab Steel Warehouse product.

We offer:

Consultations to help you determine the best solutions for your needs

Customized design services to ensure the warehouse meets your specific requirements

Quality control inspections throughout the production process

On-site installation and assembly services

Maintenance and repair services to keep your warehouse in top condition

Our goal is to provide our customers with reliable, durable, and cost-effective solutions for their storage needs. Contact us for more information on our technical support and services.

Why Choose Us to offer steel structure building:

1. We have a group of professional engineers, most of whom has more than 20 years experiences in architecture field. our company has got a various of experiences in design, manufacture, installation and so on. The work staff have excellent skills. Some of them had helped customers to install the warehouse around the world.
2. We will offer one stop service. construction drawing, calculation sheet will be offered to help you get construction permit. Foundation design could be free made if you need. We could make 3D drawings to show the view. What's more, Installation drawings will be offered and Steel structure column, beams will be marked number on it to help you install. 3. We will send you extra bolts, purlins, panels incase any damage when install.
4. Efficiency is our pursuit. Every inquiry ,emails will be replied immediately. Every questions will be paid high attention.
5. We also have possessed more than 40 sets of large precise and domestically advanced processing equipments, including large gantry planing machines, automatic submerged arc welding machines, assembling machines, slitters, shot blasting machines and soon.
6. We will offer details packing list for every container when load so it will be easier to unload.
7. "Moral personality decides product quality." is our guarantee to the products. "Customers come first." is our everlasting pursuit. Believe your choose, we'll give you a satisfied answer.

Company profile:



Baodu International Advanced Construction Material Co., Ltd was established in January 2010 with the office in Beijing and factory in Hebei, China. Baodu is a designer, manufacturer, supplier and exporter of industrial noise comprehensive treatment, steel structure, sandwich panel and prefab house. Baodu has an annual output of 6 million square meters of acoustic sandwich panels, 100000 tons of steel structures and 1 million square meters of floor decking sheet. The products are sold in more than 30 countries and regions around the world. Baodu has a professional design team with more than 10 years' experience, including 5 senior engineers, 20 engineers, and 35 technicians. Baodu has several energy saving and environment protection intellectual property rights, construction and environment protection design qualification, CE certification and Russian GOST certification etc. Baodu participated in the military parade village project for the 60th anniversary of China and project of Beijing Daxing International Airport. Under the guidance of China's "one belt, one road" strategy, Baodu has also undertaken overseas projects such as the project of Thar, Pakistan coal fired power plant, Hasyan Dubai power plant and so on. Finally, welcome your coming to Baodu for a visit and cooperation!

Packing and Shipping:



Product Packaging:

The prefabricated steel warehouse will be packaged in sturdy box to prevent any damage during transportation.

All components will be carefully wrapped and secured to ensure safe delivery.

Shipping:

The product will be shipped via truck or container, depending on the size of the order and the destination.

Shipping fees will be calculated based on the distance and weight of the order.

Delivery times may vary depending on the destination and shipping method.

Customers will be provided with a tracking number to monitor the status of their shipment.

FAQ:

1. How to buy your idea products?

You can provide us your drawing, and we can produce as your drawings.

Or we can design as your requirements if you don't have a clear plan. We will provide our plans according to the local climatic condition.

2. What factors should be considered in customizing the prefab house?

2.1: The local weather condition. We need to know the wind speed, the snow loading (if it's snowing area), the Seismic rating.

2.2: The size of the land can be for this building.

2.3: The purpose of the building, like do you need it for labour accommodation, office, or steel frame workshop, etc.

3. What countries or regions does our product export to?

Our main market is Africa and Asia, South America, etc. We have exported to many countries like: Australia, Angola, Senegal, Kenya, Indonesia, Thailand, Uruguay, Chile, America, and UK, etc.

4. The materials option for the thermal insulation:

4.1: corrugated steel sheet, thickness from 0.3mm-0.6mm

4.2: thermal insulation material: EPS sandwich panel, glass wool sandwich panel, rock wool sandwich panel, PU (polyurethane) sandwich panel.

Q: What is the payment method and supply ability for this product?

A: The payment terms for this product include L/C, D/A, D/P, T/T, Western Union, and MoneyGram. The supply ability for this product is 10000 Square Meter/Square Meters per month and the price is reasonable.



Baodu International Advanced Construction Material Co., Ltd.



+86 13717927965



chunlei.song@baodu.com



baodupanel.com

Room 1101, Building 6, Yard 9, Hongye Road, Daxing District, Beijing