



## C/Z Galvanized Steel Purlin Steel Structure Warehouse For Workshop Application

Our Product Introduction

for more products please visit us on [baodupanel.com](http://baodupanel.com)

### Basic Information

- Place of Origin: Hebei, China
- Brand Name: BAODU
- Certification: ISO9001, CE
- Model Number: Steel Warehouse
- Minimum Order Quantity: Discussible
- Price: Reasonable
- Packaging Details: In general, for steel structure, we use the steel frame packing to keep goods not to be broken. For sandwich panel and color steel sheet, we use the plastic packing. If the clients need special packing will according to their requirements.
- Delivery Time: 15-21 days
- Payment Terms: L/C, D/A, D/P, T/T, Western Union, MoneyGram
- Supply Ability: 10000 Square Meter/Square Meters per Month



### Product Specification

- Product Name: Steel Structure Warehouse Prefabricated  
Steel Building For Workshop Application  
Prefab Steel Building For Workshop Application
- Type: Steel Structure
- Keyword: Steel Structure Building Warehouse
- Weather Resistance: High
- Main Frame: Solid H-shape Steel Beam
- Installation: Engineer Guidance
- Purlin: C/Z Galvanized Steel
- Drawing Design: Customers' Request
- Window: Sliding Window, PVC Window Or Aluminium Window
- Secondary Frame: C&Z Purlin, Brace

## Steel Structure Warehouse Prefabricated Steel Building for Workshop Application

### Prefab Steel Building for Workshop Application

#### Product Description:

Steel structure has features of high fire resistance, strong corrosion resistance. Steel structure is mainly refers to the main bearing component is composed of steel. Including the steel columns, steel beam, steel structure, steel roof truss. Each component using welds, bolts or rivets to connect. The roof and wall can be made of composite panel or veneer, Galvanized sheet metal can prevent rust and corrosion. The use of self-tapping screw can make the connection between the plates more closely, to prevent leakage. You can also use composite panel for roof and wall. The sandwich is polystyrene, glass fiber, rock wool, polyurethane. They have good thermal insulation, heat insulation, fire-retardant.

#### Steel Structure Workshop

The primary difference between the two steel building types is the primary framing system. The primary framing system is the core framing of a building. Welded frame buildings are made with frames from steel flat bars and flat sheet pieces that are welded together. The columns and rafters are typically tapered, being narrow at the foundation and peak and wider at the rafter/column connection.

#### Steel Structure Workshop

A cold-formed building's main frame is typically both bolted and screwed together using pre-drilled plates. Cold-formed steel buildings can require some cutting/coping and drilling of braces on site. A welded frame steel building's main frame is bolted together with plates already welded in place by our certified welders in our weld shop. Welded frame buildings can require some drilling on site.

#### Steel Structure Workshop

The quality of the materials used in pre-engineered steel buildings plays a huge role in how long they'll last. When you're checking out options for pre-engineered steel buildings, make sure to look at the quality of the steel, insulation, and roofing materials to ensure they can handle the unique environmental conditions in the region.

#### 1. Primary Framing

Primary Frames are the main load-carrying structural steel components. They may be Clear-span Rigid Frames, Continuous Beam Frames, or Post & Beam Frames. Primary frames are designed in accordance with the steel construction manual published by American Institute of Steel Construction (AISC). Manufacturing dimensional tolerances are in accordance with the requirements of 'Metal Building Manufacturers Association' (MBMA) of USA, "Low Rise Building Systems Manual". Besides AISC and MBMA, we also design buildings with IS-875, 1984 and IS-875, 2007. Built-up sections are fabricated from hot rolled steel plates conforming to ASTM A 572M grade or equivalent with minimum yield strength of 345N/mm<sup>2</sup> (50ksi). The most common primary framing systems are illustrated here. All structures shown are symmetrical about the ridge line. Framing systems unsymmetrical about the ridge line and Multi span Framing Systems with unequal width modules are possible too. Practically any frame geometry can be erected.

#### 2. Secondary Framing (Bracing, Z and C section purlin)

Purlin, tie bar and bracing are secondary structural members used to support the wall and roof cladding. Secondary members as purlin, tie bar, column bracing and horizontal bracing connect the main frame and help in resisting part of the longitudinal loads that are applied on the building such as wind and earthquake loads. Steel purlin is available in high grade steel conforming to GB/T 2518-2008, Q235B/Q345B Grade or equivalent, available in 1.8 mm, 2.0 mm, 2.2 mm, 2.5 mm and 3.0 mm thickness. The purlin come with a galvanized sheet. Column bracing is a connecting member set between two adjacent columns to ensure the overall stability of the building structure, improve lateral stiffness and transfer longitudinal horizontal force. Column bracing will be round steel or angle steel according to the building need.

### 3. Steel Decking Floor

The pressed steel plates supporting the floor concrete are called profiled plates, also called floor bearing board. The steel decking board are widely used in multi-storey buildings such as power plant, exhibition hall, steel structure workshop, cement warehouse, steel structure office, airport terminal, railway station, stadium, concert hall, grand theater, large supermarket, logistics center, Olympic venues and sports venues and other steel structure buildings. It can adapt to the main steel structure rapid construction requirements, can provide a firm platform in a short time, and can take flow repetitive construction operation, laid a number of floors decking board, and pouring concrete slab.

#### Features:

Steel structure Workshop Specification		
Items		Specification
Main Steel Frame	Column	Q235B/Q345B Welded H Section Steel
	Beam	Q235B/Q345B Welded H Section Steel
Secondary Frame	Purlin	Q235B C and Z purlin
	Knee brace	Q235B Angle Steel
	Tie Rod	Q235B Circular Steel Pipe
	Brace	Q235B Round Bar
	Vertical and Horizontal Support	Q235B Angle Steel, Round Bar or Steel Pipe
Maintenance system	Roof Panel	EPS Sandwich Panel / Glass Fiber Sandwich Panel / Rock Wool Sandwich Panel / Pu Sandwich Panel / Steel Sheet
	Wall Panel	Sandwich Panel / Corrugated Steel Sheet
Accessories	Window	Aluminium Alloy Window / PVC Window / Steel Panel Window
	Door	Sliding Sandwich Panel Door / Rolling Metal Door
	Rainspout	PVC
Live load on Roof		In 120kg/Sqm (Color steel panel surrounded)
Wind Resistance Grade		12 Grades
Earthquake-resistance		8 Grades
Structure Usage		Up to 50 years
Finishing Options		Vast array of colors and textures available
Paint Options		Alkyd painting, two primary painting, two finishing (Primer ,Medium paint ,top coat, epoxy zinc Galvanized.

### Technical Parameters:

Please kindly inform us of the information below if you are interested in our products.

1. Project Progress: Is Land Purchased? Is it licensed by the government?
2. Usage: for warehouse, workshop, showroom, etc.
3. Location: In which country will it be built?
4. Local Climate: Wind speed, Snow load (max. Wind speed)
5. Design: Please provide the design drawing. Or do you need us to design for you?
6. Dimension: Length\*width\*height
7. Crane Beam: Do you need crane beam inside the steel structure?
8. Roof and Wall: determine the panel material, such as color steel panel, and metal sandwich panel.
9. Windows and Doors: what material, quantity, and type?



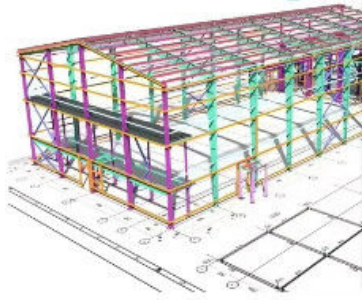
AUTODESK  
3DS MAX

SAP 2000

PKPM



AUTODESK  
AUTOCAD

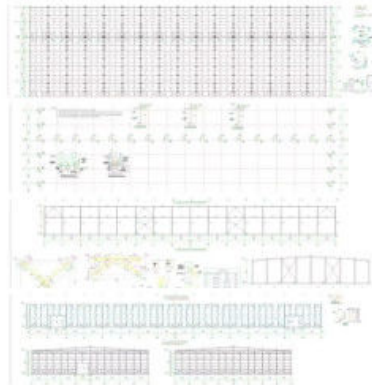


#### Steel Structural Design

We have an experienced design department, who have abundant practical experience to complete the structural designs of various buildings perfectly as per Chinese design codes and local rules. The structure is reasonable and the steel consumption is cost-effective.

For overseas projects, the design work can be took by our partners, all of them are registered structural designers, and the design can be carried out as per BS-standards, US-standards, as well as the design codes of other countries.

Detailing, 3D modeling, fabrication and installation shop drawings can be free with conditions.



#### Drawing Design

We need the following information to make a design for you: the specifications and use of the steel building, thermal and lighting conditions, window and door requirements, wind/snow load, and whether it has a crane.

1 Location (where will be built? ) \_\_\_\_\_ country, area

2 Size: Length\*width\*height \_\_\_\_\_mm\*\_\_\_\_\_mm\*\_\_\_\_\_mm

3 wind load (max. Wind speed) \_\_\_\_\_kn/m<sup>2</sup>, \_\_\_\_\_km/h, \_\_\_\_\_m/s

4 snow load (max. Snow height) \_\_\_\_\_kn/m<sup>2</sup>, \_\_\_\_\_mm

5 anti-earthquake \_\_\_\_\_level

6 brickwall needed or not If yes, 1.2m high or 1.5m high

7 thermal insulation If yes, EPS, fiberglass wool, rockwool, PU sandwich panels will be suggested; If not, the metal steel sheets

will be ok. The cost of the latter will be much lower than that of the former.

8 door quantity & size \_\_\_\_\_units, \_\_\_\_\_(width)mm\*\_\_\_\_\_ (height)mm

9 window quantity & size \_\_\_\_\_units, \_\_\_\_\_(width)mm\*\_\_\_\_\_ (height)mm

10 crane needed or not If yes, \_\_\_\_\_units, max. Lifting weight \_\_\_\_\_tons; Max. Lifting height \_\_\_\_\_m.

#### Models Design

Our company offers full design and detailing services to every customer.(PKPM, AutoCAD, Tekla).And our design team turns your requirements into clear drawings, offer 3D drawings for installation guidance, and ensures every detail is easily understandable.

#### We can provide :

##### 1.Customization Service

We have a professional design team about 20 people, with 10 years design experience. We can meet your individual needs.

And multi-type steel components, roof and wall panels, doors and windows for choosing.



## **2. Strict Quality Inspection**

With good quality steel material, we have AWS-D1.1/D1.5 welding quality system and professional CWI welding inspector to ensure high quality of the product.

## **3. Shortest Delivery Time**

We have 2 modern factories and 3 production lines with a total area of 150000 square meters to produce. We guarantee a warehouse of 5000 square meters and delivery within 30 days.

## **4. Production Visualization**

We can provide you with picture, video information of all production links, from raw materials to steel processing, the whole process of visual production. You can even video call us to watch workshop production.

## **5. Packing and Delivery**

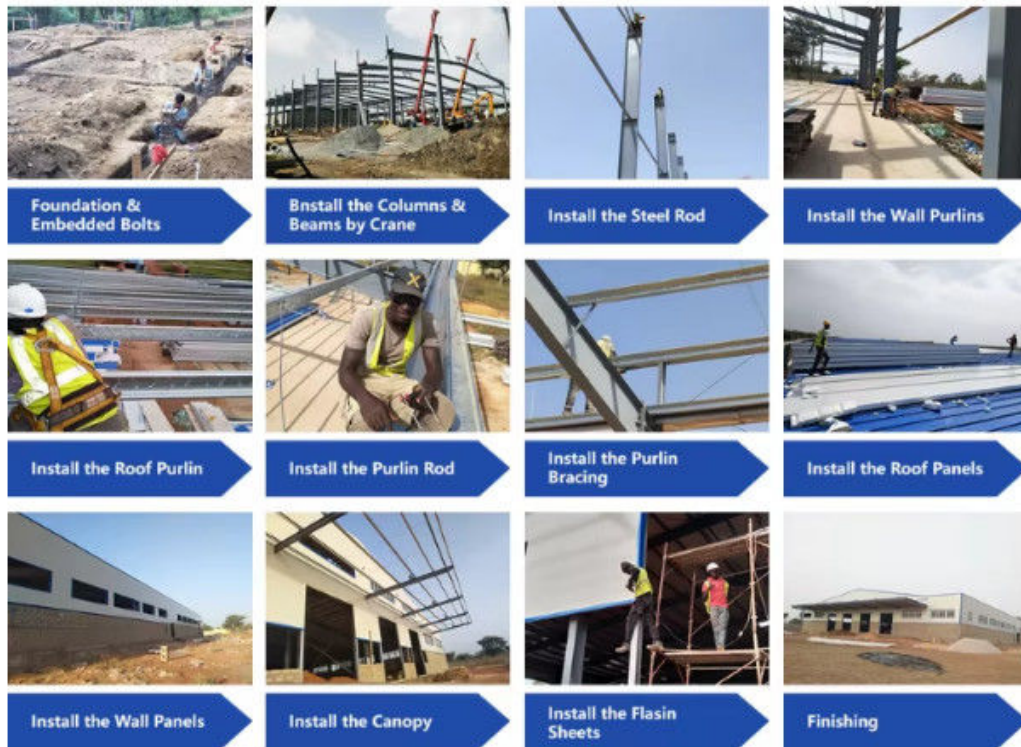
Container and pallet packing will protect the surface paint or zinc of the steel structures. In order to facilitate your installation, we will mark each component in sequence according to the drawings.

## **6. Installation Guide**

Installation instruction and video will be provide, we can also send our engineers to your site as installation guide, they will teach your people how to build project.



## Installation scene:



## Applications:

Please kindly inform us of the information below if you are interested in our products.

- 1. Project Progress:** Is Land Purchased? Is it licensed by the government?
- 2. Usage:** for warehouse, workshop, showroom, etc.
- 3. Location:** In which country will it be built?
- 4. Local Climate:** Wind speed, Snow load (max. Wind speed)
- 5. Design:** Please provide the design drawing. Or do you need us to design for you?
- 6. Dimension:** Length\*width\*height
- 7. Crane Beam:** Do you need crane beam inside the steel structure?
- 8. Roof and Wall:** determine the panel material, such as color steel panel, and metal sandwich panel.
- 9. Windows and Doors:** what material, quantity, and type?



Steel structure warehouse



Steel structure factory building



Steel structure building



Steel structure garage/hangar



Steel structure house



Steel structure livestock house

- 1) Moisture and heat resistance, waterproof and fireproof.
- 2) It can be freely lifted, fixed and combined.
- 3) Convenient transportation, cheap price and cost saving.
- 4) It is easy to assemble and disassemble, and it will not be damaged many times.
- 5) The service life is more than 50 years.
- 6) We provide remote online installation, supervision and training services. For major projects, we will conduct on-site guidance, installation and post-maintenance.
- 7) Prefabricated houses, offices, warehouses, workshops, greenhouses, workshops, garages, cold storages, container houses, hotels, toilets, etc...



## Project Cases:



Gas Turbine Combined Cycle Power Station Expansion Project in Basra Iraq



Clean Coal Fired Power Plant Phase I (4x600mw net) Project in Hasyan Dubai

## Our capacity and certification:



## Support and Services:



Our team of experts is available to provide technical support and services for the Prefab Steel Warehouse product.

We offer:

Consultations to help you determine the best solutions for your needs

Customized design services to ensure the warehouse meets your specific requirements

Quality control inspections throughout the production process

On-site installation and assembly services

Maintenance and repair services to keep your warehouse in top condition

Our goal is to provide our customers with reliable, durable, and cost-effective solutions for their storage needs. Contact us for more information on our technical support and services.

### Why Choose Us to offer steel structure building:

1. We have a group of professional engineers, most of whom has more than 20 years experiences in architecture field. our company has got a various of experiences in design, manufacture, installation and so on. The work staff have excellent skills. Some of them had helped customers to install the warehouse around the world.
2. We will offer one stop service. construction drawing, calculation sheet will be offered to help you get construction permit. Foundation design could be free made if you need. We could make 3D drawings to show the view. What's more, Installation drawings will be offered and Steel structure column, beams will be marked number on it to help you install.
3. We will send you extra bolts, purlins, panels incase any damage when install.
4. Efficiency is our pursuit. Every inquiry ,emails will be replied immediately. Every questions will be paid high attention.
5. We also have possessed more than 40 sets of large precise and domestically advanced processing equipments, including large gantry planing machines, automatic submerged arc welding machines, assembling machines, slitters, shot blasting machines and soon.
6. We will offer details packing list for every container when load so it will be easier to unload.
7. "Moral personality decides product quality." is our guarantee to the products. "Customers come first." is our everlasting pursuit. Believe your choose, we'll give you a satisfied answer.

### Company profile:





Baodu International Advanced Construction Material Co., Ltd was established in January 2010 with the office in Beijing and factory in Hebei, China. Baodu is a designer, manufacturer, supplier and exporter of industrial noise comprehensive treatment, steel structure, sandwich panel and prefab house. Baodu has an annual output of 6 million square meters of acoustic sandwich panels, 100000 tons of steel structures and 1 million square meters of floor decking sheet. The products are sold in more than 30 countries and regions around the world. Baodu has a professional design team with more than 10 years' experience, including 5 senior engineers, 20 engineers, and 35 technicians. Baodu has several energy saving and environment protection intellectual property rights, construction and environment protection design qualification, CE certification and Russian GOST certification etc. Baodu participated in the military parade village project for the 60th anniversary of China and project of Beijing Daxing International Airport. Under the guidance of China's "one belt, one road" strategy, Baodu has also undertaken overseas projects such as the project of Thar,Pakistan coal fired power plant, Hasyan Dubai power plant and so on. Finally, welcome your coming to Baodu for a visit and cooperation!

#### Packing and Shipping:



##### Product Packaging:

The prefabricated steel warehouse will be packaged in sturdy box to prevent any damage during transportation.

All components will be carefully wrapped and secured to ensure safe delivery.

##### Shipping:

The product will be shipped via truck or container, depending on the size of the order and the destination.

Shipping fees will be calculated based on the distance and weight of the order.

Delivery times may vary depending on the destination and shipping method.

Customers will be provided with a tracking number to monitor the status of their shipment.

#### FAQ:

**Q: What is the brand name of this product?**

**A:** The brand name of this product is BAODU.

**Q: What is the model number of this product?**

A: The model number of this product is Steel Warehouse.

**Q: What is the place of origin of this product?**

A: The place of origin of this product is Hebei, China.

**Q: What certifications does this product have?**

A: This product is certified with ISO9001 and CE.

**Q: What is the packaging method and delivery time for this product?**

A: In general, for steel structure, we use the steel frame packing to keep goods not to be broken. For sandwich panel and color steel sheet, we use the plastic packing. If the clients need special packing, it will be according to their requirements. The delivery time for this product is 21 days.

**Q: What is the payment method and supply ability for this product?**

A: The payment terms for this product include L/C, D/A, D/P, T/T, Western Union, and MoneyGram. The supply ability for this product is 10000 Square Meter/Square Meters per month and the price is reasonable.



**Baodu International Advanced Construction Material Co., Ltd.**



+86 13717927965



chunlei.song@baodu.com



baodupanel.com

Room 1101, Building 6, Yard 9, Hongye Road, Daxing District, Beijing