

40x60 Metal Prefabricated Steel Structure Warehouse Building

Our Product Introduction

for more products please visit us on baodupanel.com

Basic Information

- Place of Origin: Hebei, China
- Brand Name: BAODU
- Certification: ISO9001, CE
- Model Number: Steel Warehouse
- Minimum Order Quantity: Discussible
- Price: Reasonable
- Packaging Details: In general, for steel structure, we use the steel frame packing to keep goods not to be broken. For sandwich panel and color steel sheet, we use the plastic packing. If the clients need special packing will according to their requirements.
- Delivery Time: 15-21 days
- Payment Terms: L/C, D/A, D/P, T/T, Western Union, MoneyGram
- Supply Ability: 10000 Square Meter/Square Meters per Month



Product Specification

- Product Name: 40x60 Steel Building Metal Building Prefabricated Warehouse Steel Structure Warehouse
- Type: Steel Structure
- Keyword: Steel Structure Building Warehouse
- Weather Resistance: High
- Fire Resistance: High
- Main Frame: Solid H-shape Steel Beam
- Installation: Engineer Guidance
- Purlin: C/Z Galvanized Steel
- Drawing Design: Customers' Request
- Window: Sliding Window, PVC Window Or Aluminium Window
- Door: Sliding Door Or Rolling Door

Product Description

40x60 Steel Building Metal Building Prefabricated Warehouse Steel Structure Warehouse

Product Description:

Our company specializes in providing one-stop services including design, production and construction of steel structure factories, and is committed to offering cost-effective building solutions for industrial warehousing, logistics centers, manufacturing and other fields.

Core advantage:

High strength material: made of high-quality Q345B steel, resistant to pressure and corrosion, with a service life of up to 50 years +, in line with national building standards.

Quick Delivery: Modular production, efficient on-site assembly, shorten time by 30% to help you seize market opportunities.

Flexible customization: Supports span 12-60 m, floor height and bay size are designed as needed to meet personalized requirements such as driving, ventilation and lighting.

Energy saving and environmental protection: can integrate thermal insulation sandwich panels, photovoltaic roof and other green configuration, reduce energy consumption, help enterprise sustainable development.

Full service: Professional team to follow up from drawing deepening, approval and construction application to final acceptance to ensure zero risk of project implementation.

Features:

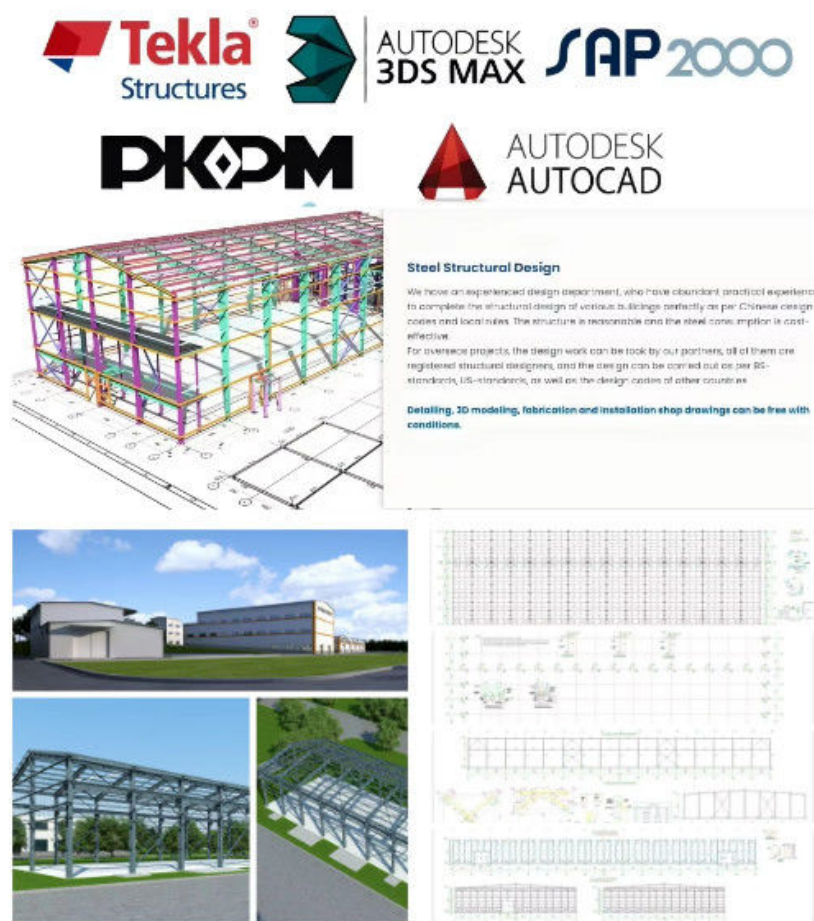
| Structure | Part | Specification |
|---------------------|---|--|
| Main Structure | Frame Column and Beam | Q355B H/I Section & As drawings |
| | Welding | Automatic Submerged Arc Welding |
| | Rust Removing | Shot Blasting |
| | Surface Processing | Coating or Galvanized |
| | High Strength Bolt | Grade 10.9 |
| Secondary Structure | Purlin | C/Z Purlin Size from C120-C320,Z100~Z300, |
| | Angle Brace | Q235B L-Steel |
| | Cross Brace/X Brace | Q235B Round Pipe |
| | Tie Bar | Q235B Round Bar |
| Roof System | Roofing Material | Sandwich Panel-Insulated PU/Glasswool/Rock Wool/EPS 50mm-200mm |
| | Skylight Panel | 1.2mm FRP |
| | Gutter | Steel Gutter Galvanized/Coated 2.0mm-3.0mm |
| | Rainspout/Down Pipe | PVC Pipe |
| Wall System | Wall Material | Sandwich Panel-Insulated PU/Glasswool/Rock Wool/EPS 50mm-200mm |
| | Accessories | Sealant, Self-tapping Screw etc |
| | Edge Cover | Color Steel |
| Ventilator | Unpowered Axial-Flow Ventilator or Monitor Roof | Customizable |
| Door | Electric Rolling Door/Sliding Door/Access Side Door | Customizable |

| | | |
|---------|--|--------------|
| Window | Aluminum/PVC | Customizable |
| Crane | 1-200 T | Customizable |
| Packing | Main steel frame without packing load in 40' OT; | |
| | Roof and wall panel load in 40' HQ! | |

Technical Parameters:

Please kindly inform us of the information below if you are interested in our products.

1. Project Progress: Is Land Purchased? Is it licensed by the government?
2. Usage: for warehouse, workshop, showroom, etc.
3. Location: In which country will it be built?
4. Local Climate: Wind speed, Snow load (max. Wind speed)
5. Design: Please provide the design drawing. Or do you need us to design for you?
6. Dimension: Length*width*height
7. Crane Beam: Do you need crane beam inside the steel structure?
8. Roof and Wall: determine the panel material, such as color steel panel, and metal sandwich panel.
9. Windows and Doors: what material, quantity, and type?



Drawing Design

We need the following information to make a design for you: the specifications and use of the steel building, thermal and lighting conditions, window and door requirements, wind/snow load, and whether it has a crane.

- 1 Location (where will be built?) _____ country, area
- 2 Size: Length*width*height _____mm*_____mm*_____mm
- 3 wind load (max. Wind speed) _____kn/m², _____km/h, _____m/s
- 4 snow load (max. Snow height) _____kn/m², _____mm
- 5 anti-earthquake _____level
- 6 brickwall needed or not If yes, 1.2m high or 1.5m high
- 7 thermal insulation If yes, EPS, fiberglass wool, rockwool, PU sandwich panels will be suggested; If not, the metal steel sheets will be ok. The cost of the latter will be much lower than that of the former.
- 8 door quantity & size _____units, _____(width)mm*_____ (height)mm
- 9 window quantity & size _____units, _____(width)mm*_____ (height)mm
- 10 crane needed or not If yes, _____units, max. Lifting weight _____tons; Max. Lifting height _____m.

Models Design

Our company offers full design and detailing services to every customer.(PKPM, AutoCAD, Tekla).And our

design team turns your requirements into clear drawings, offer 3D drawings for installation guidance, and ensures every detail is easily understandable.

We can provide :

1.Customization Service

We have a professional design team about 20 people, with 10 years design experience. We can meet your individual needs.

And multi-type steel components, roof and wall panels, doors and windows for choosing.



2. Strict Quality Inspection

With good quality steel material, we have AWS-D1.1/D1.5 welding quality system and professional CWI welding inspector to ensure high quality of the product.

3. Shortest Delivery Time

We have 2 modern factories and 3 production lines with a total area of 150000 square meters to produce. We guarantee a warehouse of 5000 square meters and delivery within 30 days.

4. Production Visualization

We can provide you with picture,video information of all production links, from raw materials to steel processing, the whole process of visual production. You can even video call us to watch workshop production.

5. Packing and Delivery

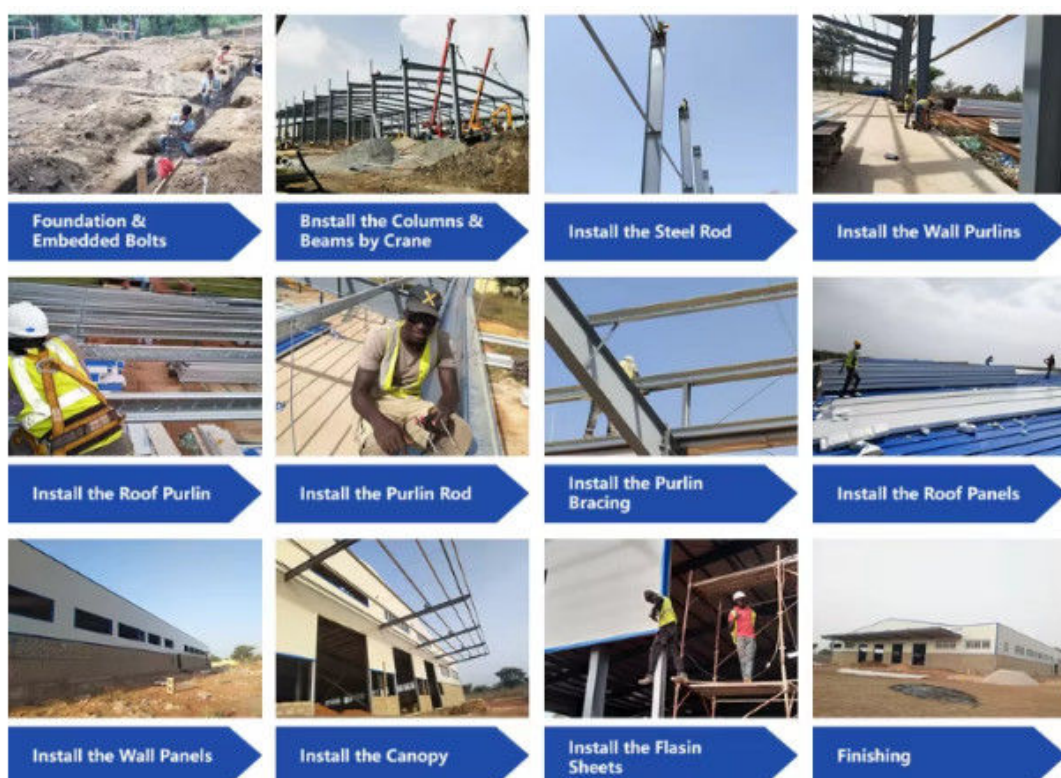
Container and pallet packing will protect the surface paint or zinc of the steel structures. In order to facilitate your

installation, we will mark each component in sequence according to the drawings.

6. Installation Guide

Installation instruction and video will be provide, we can also send our engineers to your site as installation guide, they will teach your people how to build project.

Installation scene:



Applications:

Please kindly inform us of the information below if you are interested in our products.

1. **Project Progress:** Is Land Purchased? Is it licensed by the government?
2. **Usage:** for warehouse, workshop, showroom, etc.
3. **Location:** In which country will it be built?
4. **Local Climate:** Wind speed, Snow load (max. Wind speed)
5. **Design:** Please provide the design drawing. Or do you need us to design for you?
6. **Dimension:** Length*width*height
7. **Crane Beam:** Do you need crane beam inside the steel structure?
8. **Roof and Wall:** determine the panel material, such as color steel panel, and metal sandwich panel.
9. **Windows and Doors:** what material, quantity, and type?



Steel structure warehouse



Steel structure factory building



Steel structure building



Steel structure garage/hangar



Steel structure house



Steel structure livestock house

- 1) Moisture and heat resistance, waterproof and fireproof.
- 2) It can be freely lifted, fixed and combined.
- 3) Convenient transportation, cheap price and cost saving.
- 4) It is easy to assemble and disassemble, and it will not be damaged many times.
- 5) The service life is more than 50 years.
- 6) We provide remote online installation, supervision and training services. For major projects, we will conduct on-site guidance, installation and post-maintenance.
- 7) Prefabricated houses, offices, warehouses, workshops, greenhouses, workshops, garages, cold storages, container houses, hotels, toilets, etc...

Project Cases:



Gas Turbine Combined Cycle Power Station Expansion Project in Basra Iraq



Clean Coal Fired Power Plant Phase I (4x600mw net) Project in Hasyan Dubai

Our capacity and certification:



Support and Services:



Our team of experts is available to provide technical support and services for the Prefab Steel Warehouse product.

We offer:

Consultations to help you determine the best solutions for your needs

Customized design services to ensure the warehouse meets your specific requirements

Quality control inspections throughout the production process

On-site installation and assembly services

Maintenance and repair services to keep your warehouse in top condition

Our goal is to provide our customers with reliable, durable, and cost-effective solutions for their storage needs. Contact us for more information on our technical support and services.

Company profile:



Baodu International Advanced Construction Material Co., Ltd was established in January 2010 with the office in Beijing and factory in Hebei, China. Baodu is a designer, manufacturer, supplier and exporter of industrial noise comprehensive treatment, steel structure, sandwich panel and prefab house. Baodu has an annual output of 6 million square meters of acoustic sandwich panels, 100000 tons of steel structures and 1 million square meters of floor decking sheet. The products are sold in more than 30 countries and regions around the world. Baodu has a professional design team with more than 10 years' experience, including 5 senior engineers, 20 engineers, and 35 technicians. Baodu has several energy saving and environment protection intellectual property rights, construction and environment protection design qualification, CE certification and Russian GOST certification etc. Baodu participated in the military parade village project for the 60th anniversary of China and project of Beijing Daxing International Airport. Under the guidance of China's "one belt, one road" strategy, Baodu has also undertaken overseas projects such as the project of Thar,Pakistan coal fired power plant, Hasyan Dubai power plant and so on. Finally, welcome your coming to Baodu for a visit and cooperation!

Packing and Shipping:



Product Packaging:

The prefabricated steel warehouse will be packaged in sturdy box to prevent any damage during transportation.

All components will be carefully wrapped and secured to ensure safe delivery.

Shipping:

The product will be shipped via truck or container, depending on the size of the order and the destination.

Shipping fees will be calculated based on the distance and weight of the order.

Delivery times may vary depending on the destination and shipping method.

Customers will be provided with a tracking number to monitor the status of their shipment.

FAQ:

Q: What is the brand name of this product?

A: The brand name of this product is BAODU.

Q: What is the model number of this product?

A: The model number of this product is Steel Warehouse.

Q: What is the place of origin of this product?

A: The place of origin of this product is Hebei, China.

Q: What certifications does this product have?

A: This product is certified with ISO9001 and CE.

Q: What is the packaging method and delivery time for this product?

A: In general, for steel structure, we use the steel frame packing to keep goods not to be broken. For sandwich panel and color steel sheet, we use the plastic packing. If the clients need special packing, it will be according to their requirements. The delivery time for this product is 21 days.

Q: What is the payment method and supply ability for this product?

A: The payment terms for this product include L/C, D/A, D/P, T/T, Western Union, and MoneyGram. The supply ability for this product is 10000 Square Meter/Square Meters per month and the price is reasonable.



Baodu International Advanced Construction Material Co., Ltd.



+86 13717927965



chunlei.song@baodu.com



baodupanel.com

Room 1101, Building 6, Yard 9, Hongye Road, Daxing District, Beijing