

Steel Structures Workshop 1000 Square Meter Metal Storage Shed Building With Corrugated/EPS/PU/Rock Wool Roof And Wall

Our Product Introduction

for more products please visit us on baodupanel.com

Basic Information

- Place of Origin: Hebei, China
- Brand Name: BAODU
- Certification: ISO9001, CE
- Model Number: Steel Warehouse
- Minimum Order Quantity: Discussible
- Price: Reasonable
- Packaging Details: In general, for steel structure, we use the steel frame packing to keep goods not to be broken. For sandwich panel and color steel sheet, we use the plastic packing. If the clients need special packing will according to their requirements.
- Delivery Time: 15-21 days
- Payment Terms: L/C, D/A, D/P, T/T, Western Union, MoneyGram
- Supply Ability: 10000 Square Meter/Square Meters per Month



Product Specification

- Product Name: 1000 Square Meter Warehouse Building
Construction Metal Storage Shed Steel
Factory Steel Structures Workshop
- Type: Light Steel Structure
- Keyword: Steel Structure Building Warehouse
- Roof And Wall: Corrugated/EPS/PU/Rock Wool/glass Wool
- Weather Resistance: High
- Fire Resistance: High
- Roof & Wall Panel: Color Steel Veneer, Rockwool Sandwich
Panel, PU Sandwich Panel Etc
- Main Frame: Solid H-shape Steel Beam
- Warranty: More Than 50 Years
- Installation: Engineer Guidance
- Detail: Q235B, Q355B Galvanized



More Images



Product Description

1000 Square Meter Warehouse Building Construction Metal Storage Shed Steel Factory Steel Structures Workshop

Product Description:

Our company specializes in providing one-stop services including design, production and construction of steel structure factories, and is committed to offering cost-effective building solutions for industrial warehousing, logistics centers, manufacturing and other fields.

Core advantage:

High strength material: made of high-quality Q345B steel, resistant to pressure and corrosion, with a service life of up to 50 years +, in line with national building standards.

Quick Delivery: Modular production, efficient on-site assembly, shorten time by 30% to help you seize market opportunities.

Flexible customization: Supports span 12-60 m, floor height and bay size are designed as needed to meet personalized requirements such as driving, ventilation and lighting.

Energy saving and environmental protection: can integrate thermal insulation sandwich panels, photovoltaic roof and other green configuration, reduce energy consumption, help enterprise sustainable development.

Full service: Professional team to follow up from drawing deepening, approval and construction application to final acceptance to ensure zero risk of project implementation.

Features:

Main Structure	Including Column & Beam, Made of welded H section Steel, Steel Grade Q355B/Q235B
	Column & Beam Connection: High Strength Bolt
	Column & Foundation Connection: Pre-embedded Anchor Bolt
Secondary Structure	Roof Purlin & Wall Purlin: C-shape or Z-shape Steel
	Knee Brace: Angle Steel
	Brace: Steel Rod
	Tie Bar: Steel Pipe

Types of wall panels and roof panels	Applicable Regions and Scenarios
Color Steel Sheet	Areas without winter, preferred for processing workshops and warehouses
Color Steel Sheet & Fiberglass Roll Insulation	Areas with winter but with low requirements of temperature , preferred for warehouses and workshops
Insulated Sandwich Panel	Workshops and warehouses with temperature requirements
PU Insulated Sandwich Panel	Workshops, warehouses and public facilities with high requirements of temperature for the working environment

Technical Parameters:

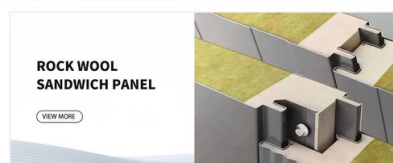
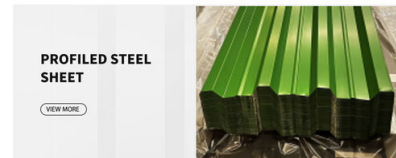


Quotation information:

If you are interested in our products, please let us know your requirements for the steel structure project.

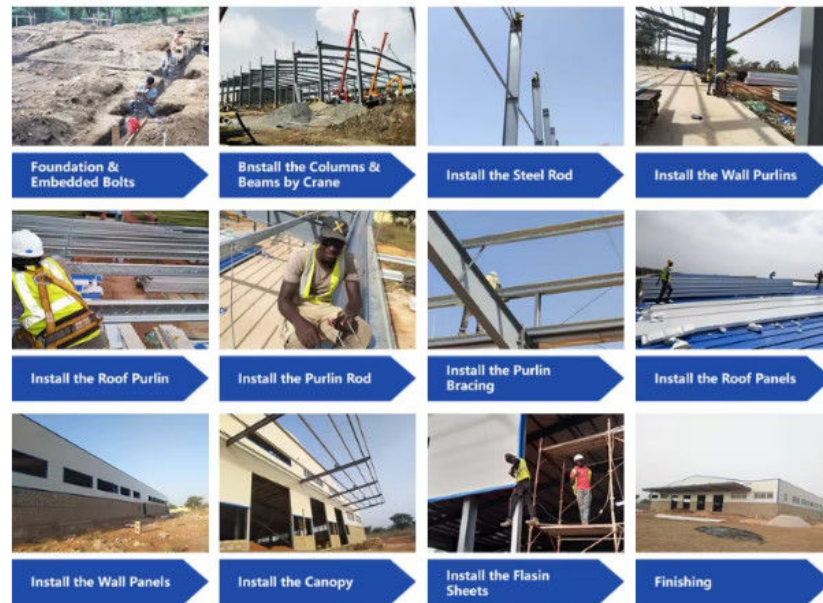
- 1: Location: Which country and region is the building located in.
- 2: Dimensions: Length * Width * Height
- 3: Wind load: maximum wind speed (kn/m2, km/h, m/s)
- 4: Snow load (if applicable): maximum snow height (kn/m2, mm)
- 5: Single layer steel plate mast or sandwich panel mast Do you need insulation materials? If so, it is recommended to use EPS, fiberglass wool, rock wool, and PU sandwich panels. If not, metal steel plates will be very affordable.
- 6: Seismic grade?
- 7: Do we need brick walls or not? If so, 1.2 meters high or 1.5 meters high
- 8: The Q value (unit) and size (width * height) of doors and windows.
- 9: Do you need a crane or not? If so, it is the quantity (unit), maximum lifting weight (ton), and maximum lifting height (meter).
- 10: Are there any other special requirements?

Product main material:

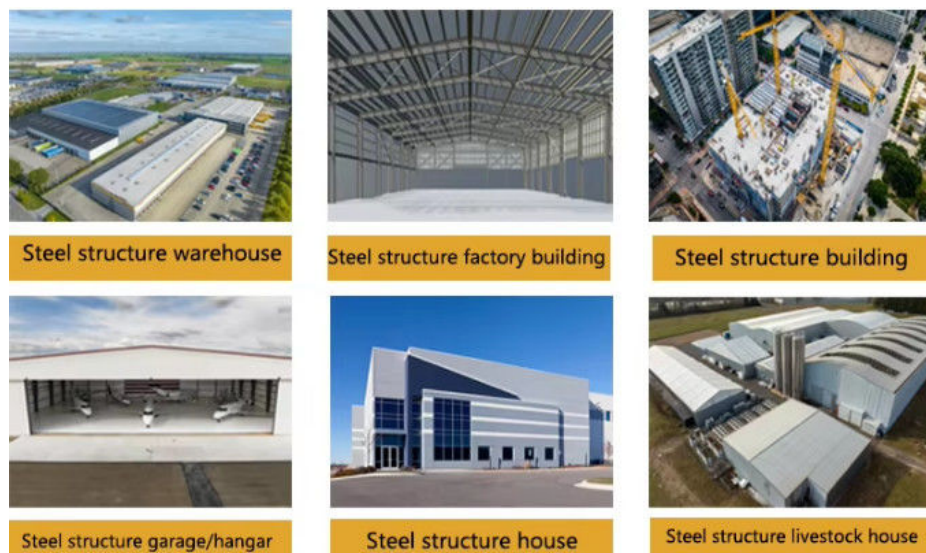




Installation scene:



Applications:



- 1) Moisture and heat resistance, waterproof and fireproof.
- 2) It can be freely lifted, fixed and combined.
- 3) Convenient transportation, cheap price and cost saving.
- 4) It is easy to assemble and disassemble, and it will not be damaged many times.
- 5) The service life is more than 50 years.
- 6) We provide remote online installation, supervision and training services. For major projects, we will conduct on-site guidance, installation and post-maintenance.
- 7) Prefabricated houses, offices, warehouses, workshops, greenhouses, workshops, garages, cold storages, container houses, hotels, toilets, etc...

Project Cases:



Gas Turbine Combined Cycle Power Station Expansion Project in Basra Iraq



Clean Coal Fired Power Plant Phase I (4x600mw net) Project in Hasyan Dubai

Our capacity and certification:



Support and Services:



Our team of experts is available to provide technical support and services for the Prefab Steel Warehouse product.

We offer:

Consultations to help you determine the best solutions for your needs

Customized design services to ensure the warehouse meets your specific requirements

Quality control inspections throughout the production process

On-site installation and assembly services

Maintenance and repair services to keep your warehouse in top condition

Our goal is to provide our customers with reliable, durable, and cost-effective solutions for their storage needs. Contact us for more information on our technical support and services.

Packing and Shipping:



Product Packaging:

The prefabricated steel warehouse will be packaged in sturdy box to prevent any damage during transportation.

All components will be carefully wrapped and secured to ensure safe delivery.

Shipping:

The product will be shipped via truck or container, depending on the size of the order and the destination.

Shipping fees will be calculated based on the distance and weight of the order.

Delivery times may vary depending on the destination and shipping method.

Customers will be provided with a tracking number to monitor the status of their shipment.

FAQ:

Q: What is the brand name of this product?

A: The brand name of this product is BAODU.

Q: What is the model number of this product?

A: The model number of this product is Steel Warehouse.

Q: What is the place of origin of this product?

A: The place of origin of this product is Hebei, China.

Q: What certifications does this product have?

A: This product is certified with ISO9001 and CE.

Q: What is the packaging method and delivery time for this product?

A: In general, for steel structure, we use the steel frame packing to keep goods not to be broken. For sandwich panel and color steel sheet, we use the plastic packing. If the clients need special packing, it will be according to their requirements. The delivery time for this product is 21 days.

Q: What is the payment method and supply ability for this product?

A: The payment terms for this product include L/C, D/A, D/P, T/T, Western Union, and MoneyGram. The supply ability for this product is 10000 Square Meter/Square Meters per month and the price is reasonable.



Baodu International Advanced Construction Material Co., Ltd.



+86 13717927965



chunlei.song@baodu.com



baodupanel.com

Room 1101, Building 6, Yard 9, Hongye Road, Daxing District, Beijing