

Popular Steel Structure Warehouse Drawing Design SAP2000 / TEKLA Prefabricated

Our Product Introduction

for more products please visit us on baodupanel.com

Basic Information

- Place of Origin: Hebei, China
- Brand Name: BAODU
- Certification: ISO9001, CE
- Model Number: Steel Warehouse
- Minimum Order Quantity: Discussible
- Price: Reasonable
- Packaging Details: In general, for steel structure, we use the steel frame packing to keep goods not to be broken. For sandwich panel and color steel sheet, we use the plastic packing. If the clients need special packing will according to their requirements.
- Delivery Time: 21 days
- Payment Terms: L/C, D/A, D/P, T/T, Western Union, MoneyGram
- Supply Ability: 10000 Square Meter/Square Meters per Month



Product Specification

- Product Name: Popular Steel Structural Building Steel Structure Warehouse Prefabricated Factory
- Keyword: Industrial Steel Warehouse
- Maintenance: Low
- Weather Resistance: High
- Drawing Design: SAP2000/AutoCAD /PKPM /3D3S/TEKLA
- Window: Aluminum Alloy Window, Plastic Steel
- Installation: Easy
- Structure: Steel Structure Frame Welded
- Application Fields: Warehouse Workshop Office Storage
- Material: Q235/Q355 Steel
- Surface Treatment: 1. Painting 2. Galvanized
- Purlin: C.Z Shape Steel Channel

Product Description

Popular Steel Structural Building Steel Structure Warehouse Prefabricated Factory

Product Description:



1. High strength: Steel has high strength and can withstand large loads, making it suitable for building complex structures such as high-rise and large-span buildings.
2. Lightweight materials: Despite their high strength, the density of steel is relatively low, making steel structures lightweight, easy to transport and install, and reducing construction difficulty and costs.
3. Good durability: Steel structure buildings can extend their service life through appropriate anti-corrosion treatment. The steel frame is made of ultra strong anti-corrosion and high-strength cold-rolled galvanized sheet, effectively avoiding the problem of corrosion of steel plates during construction and use.
4. Fast construction speed: The components of steel structure buildings can be precisely processed and manufactured in the factory, and then transported to the site for rapid assembly. This construction method greatly shortens the construction period and improves construction efficiency. Steel structure buildings usually adopt dry construction methods, which are not easily affected by natural environmental seasons and can be constructed under various climatic conditions.

Features:

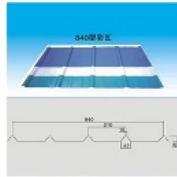
Model NO.	GY-SW252	After-sales Service	Full Drawing, Install Guide or Training
Member	Steel Column	Warranty	30-50 Years Service Life
Carbon Structural Steel	Q355	Type	H-Section Steel
Application	Steel Workshop, Steel Structure Platform, Steel Fabricated House, Structural Roofing, Frame Part, Steel Walkway and Floor, Steel Structure Bridge, Steel Workshop, Warehouse, Department, Steel Hangars	Standard	ASTM
		Trademark	Carbon Structural Steel, Ganyo
		Forming	Hot-Rolled Steel
		Material	Steel Structure
Structure Frame	Portal Frame	Software We Used	Auto CAD, Pkpm, Tekla
Steel Code	Q355 & Q235	H Steel Type	Hot Rolled H-Beam or Welded H Beam
Wind Loading	80km/H-120km/H, or as Client's Requirement	Snow Loading	as Per Customer's Requirements
Seismic Grade	7 Grade	Connection Method	Bolts Connection
Cladding Materials	Single Corrugated Steel Sheet, Sandwich Panels	Structure Surface Treatment	Any Color Painting or Hot Galvanize

Origin	Foshan, China	Specification	Customized Size
Production Capacity	2000 Tons Per Month	Residential Wall Structure	Sandwich Panels
Connection Form	Bolt Connection	Customized	Customized
Type of Steel For Building Structure	H Beam Steel	HS Code	9406000090 or 7308900000

Components:

Roof and wall project system

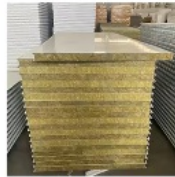
The roof and wall system plays a vital role in protecting your structure from environmental factors like wind, rain, and temperature fluctuations. With advanced insulation and weatherproofing, our systems ensure durability and energy efficiency.



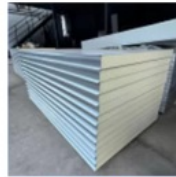
Connected Steel Sheet



EPS Sandwich Panel



Rock Wool Sandwich Panel



PU Sandwich Panel

Main Steel Frame

At the core of every steel structure is the main steel frame, which provides the strength and stability necessary to support the entire building. Our frames are designed for durability, ensuring that your structure can withstand even the most demanding conditions.



Steel Column Steel Beam Wind Resistant Columns



Connected Plate



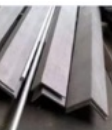
Tie Bar



Roof Purlin



Horizontal Support



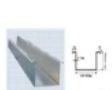
L Shape Steel for Bracing

Other Materials

Every steel structure project requires a range of additional materials to ensure its functionality and performance. From accessories to safety-enhancing features, we offer everything you need to complete your structure.



Covering Accessories



Water Gutter



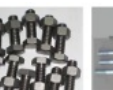
Embedded Bolts



Turnbuckle Bolts



High Strength Bolts



Normal Bolts



Steel Rod



Rolling Gate



Automatic Machine for Rolling Door



Canopy



Ventilation Materials



Ventilation Materials



Steel Door for Man



Aluminum Sliding Window

Technical Parameters:



zzclqgcb.en.alibaba.com



If you are interested in our steel structure , please give us the following information:

- 1 Location (where will be built?) _____country, area
- 2 Size: Length*width*height _____mm*_____mm*_____mm
- 3 wind load (max. Wind speed) _____kn/m2, _____km/h, _____m/s
- 4 snow load (max. Snow height)_____kn/m2, _____mm
- 5 anti-earthquake _____level
- 6 brickwall needed or not If yes, 1.2m high or 1.5m high
- 7 thermal insulation If yes, EPS, fiberglass wool, rockwool, PU sandwich panels will be suggested; If not, the metal steel sheets will be ok. The cost of the latter will be much lower than that of the former.
- 8 door quantity & size _____units, _____(width)mm*_____ (height)mm
- 9 window quantity & size _____units, _____(width)mm*_____ (height)mm
- 10 crane needed or not If yes, _____units, max. Lifting weight_____ tons; Max. Lifting height _____m.

Applications:



**MULTI-STOREY BUILDING
IN PHILIPPINES**



**HEAVY WORKSHOP
IN AUSTRALIA**



**STEEL WAREHOUSE
IN GERMANY**



**STEEL BUILDING
IN ZIMBABWE**



**FACTORY WAREHOUSE
IN MALAWI**



**SHOPPING MALL
IN PHILIPPINES**



**PREFABRICATED SHED
IN CANADA**



**PREFAB WAREHOUSE
IN CANADA**



**METAL WORKSHOP
IN INDONESIA**

Product Application Occasions and Scenarios for BAODU Steel Warehouse:

The BAODU Steel Warehouse is a versatile and durable solution for a variety of application occasions and scenarios. With its high-quality construction and customizable features, this prefab warehouse is suitable for a wide range of uses.

1. Prefab Warehouse Construction:

The BAODU Steel Warehouse is ideal for prefab warehouse construction projects. Its steel structure design, featuring welded H steel beams and steel truss, provides a strong and reliable framework for building a warehouse quickly and efficiently.

2. Steel Warehouse Workshop:

Whether you need a workshop for manufacturing, assembly, or other industrial purposes, the BAODU Steel Warehouse is a perfect choice. Its long fatigue life and low maintenance requirements make it a cost-effective solution for continuous use.

3. Hangar Hall Steel Structure:

For hangar hall applications, the BAODU Steel Warehouse offers a spacious and sturdy structure to accommodate aircraft, machinery, or other large equipment. Its customized size and reasonable price make it a practical choice for hangar construction.

4. Customized Size Options:

The BAODU Steel Warehouse can be tailored to meet specific size requirements, allowing for flexibility in design and layout. Whether you need a small storage facility or a large industrial warehouse, this product can be customized to fit your needs.

5. Reliable Certification and Quality:

With ISO9001 and CE certifications, you can trust the quality and reliability of the BAODU Steel Warehouse. Its high-quality materials and construction ensure durability and long-term performance.

6. Fast Delivery and Flexible Payment Terms:

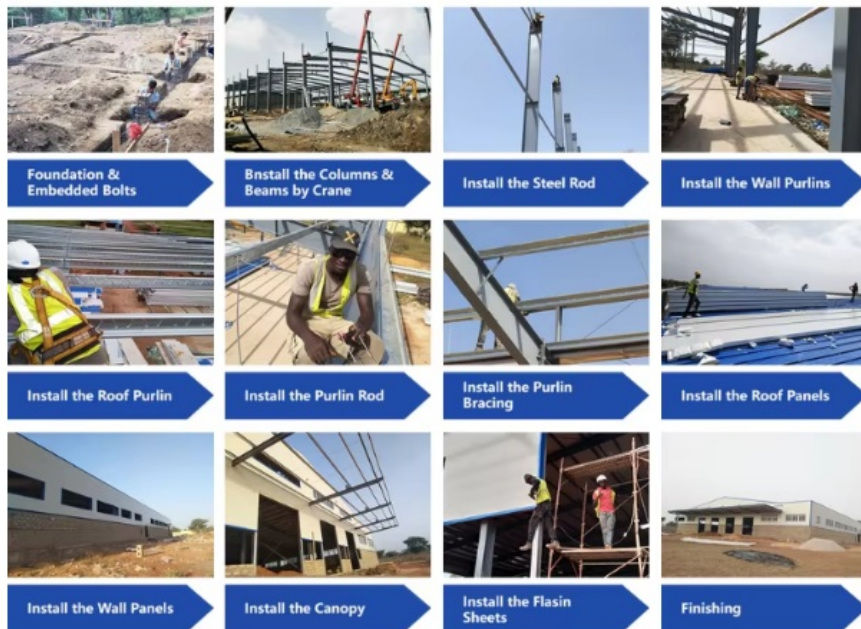
With a delivery time of 21 days and various payment options including L/C, D/A, D/P, T/T, Western Union, and MoneyGram, acquiring the BAODU Steel Warehouse is convenient and hassle-free.

7. High Supply Ability:

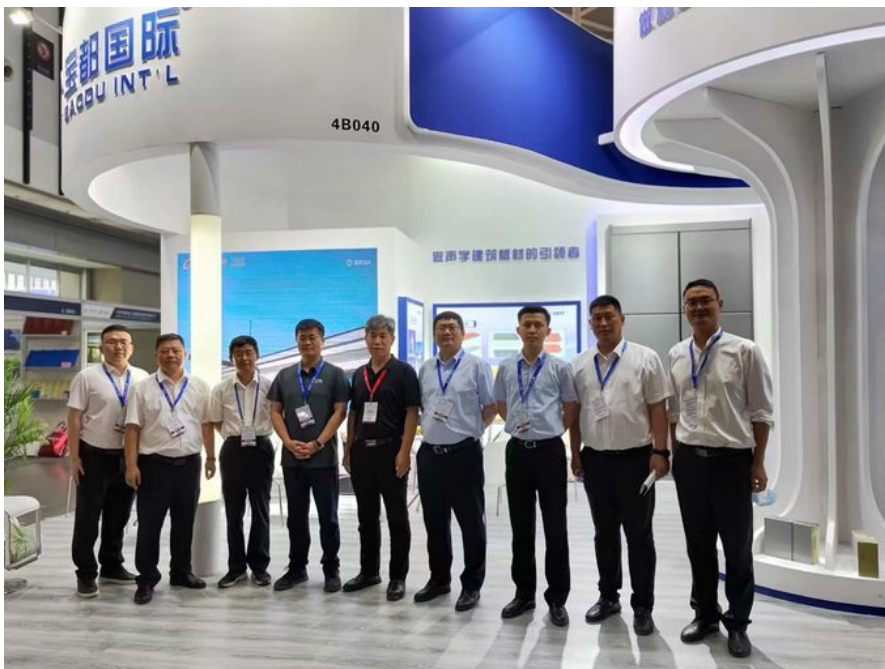
With a supply ability of 10000 square meters per month, you can rely on the BAODU Steel Warehouse to meet your project needs promptly and efficiently.

Overall, the BAODU Steel Warehouse is a versatile and reliable solution for prefab warehouse construction, steel warehouse workshops, hangar hall steel structures, and more. Its customizable features, reasonable price, and long fatigue life make it a smart choice for a wide range of application occasions and scenarios.

Customization:



Support and Services:



The Prefab Steel Warehouse product comes with comprehensive technical support and services to ensure proper installation, maintenance, and repair. Our team of experts is available to assist with any questions or issues that may arise during the process. Our technical support includes:

Pre-installation consultation to ensure the building meets all necessary requirements and standards

On-site installation guidance and supervision

Ongoing maintenance support to keep the building in optimal condition

24/7 emergency repair services

Training for building owners and operators on how to properly maintain and use the building

We are committed to providing top-quality technical support and services to ensure our customers are completely satisfied with their Prefab Steel Warehouse.

Advantages:

1. Professional design: We have a senior design team that can accurately customize drawings or calculate steel usage to meet your personalized needs.
2. Exquisite craftsmanship: A skilled production team combined with advanced equipment customizes production plans for each project to ensure excellent quality.
3. One stop service: With rich project experience, we provide comprehensive and integrated proposals, from design to installation, worry free throughout the process.
4. Strict quality control: A professional quality control team follows international standards to ensure that products and services perfectly meet your requirements.
5. High quality after-sales service quickly responds to customer needs, provides comprehensive maintenance services, and ensures long-term stable operation of the project.

Packing and Shipping:



Product Packaging:

The prefab steel warehouse will be carefully packed to ensure safe transportation. Each component will be securely wrapped and protected to prevent any damage during transit.

Shipping:

Our shipping process is efficient and reliable. We work with trusted carriers to deliver the prefab steel warehouse to your location in a timely manner. You will receive tracking information so you can monitor the progress of your shipment.

FAQ:

Q: What is the brand name of this product?

A: The brand name is BAODU.

Q: What is the model number of this product?

A: The model number is Steel Warehouse.

Q: Where is this product manufactured?

A: This product is manufactured in Hebei, China.

Q: What certifications does this product have?

A: This product is certified with ISO9001 and CE.

Q: What are the payment terms accepted for purchasing this product?

A: The accepted payment terms are L/C, D/A, D/P, T/T, Western Union, and MoneyGram.



Baodu International Advanced Construction Material Co., Ltd.



+86 13717927965



chunlei.song@baodu.com



baodupanel.com

Room 1101, Building 6, Yard 9, Hongye Road, Daxing District, Beijing