

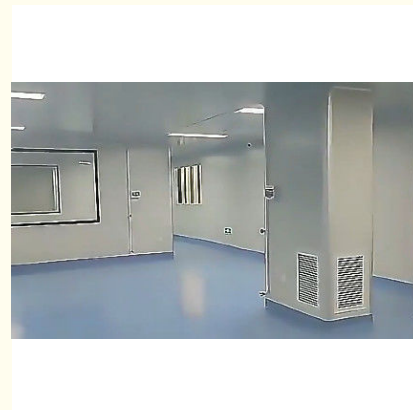


## Professional Customized Clean Room Gmp Modular Dust Free Equipment Panel Portable Modular Clean Room Laboratory

Our Product Introduction

### Basic Information

- Place of Origin: HEBEI, CHINA
- Brand Name: BAODU
- Certification: CE
- Model Number: Clean Room
- Minimum Order Quantity: 500square meters
- Price: \$7-10square meter
- Packaging Details: For sandwich panel and color steel sheet, we use the plastic packing . If the clients need special packing will according to their requirements.
- Delivery Time: 15days
- Payment Terms: L/C, D/A, D/P, T/T, Western Union, MoneyGram
- Supply Ability: 5000 Square Meter/Square Meters per Day



### Product Specification

- Product Name: Professional Customized Clean Room Gmp Modular Dust Free Equipment Panel Portable Modular Clean Room Laboratory
- Width: 1150mm Width , Or Customized
- Keyword: Clean Room
- Surface Material: Galvanized Sheet / SUS304
- Core Materials: Mgo/rock Wool/PU/silica Rock
- Thickness Of Panel: 50-100mm
- Floor: Epoxy / PVC Etc
- HVAC System: Heat Recovery Air Handling Unit
- Thickness Of The Steel: 0.4-0.7mm
- Size: Customized Size
- Highlight: **Gmp Modular Clean Room,  
Portable Modular Clean Room,  
Customized Clean Room**

for more products please visit us on [baodupanel.com](http://baodupanel.com)

## Product Description

### Professional Customized Clean Room Gmp Modular Dust Free Equipment Panel Portable Modular Clean Room Laboratory

#### Product Overview-----

A cleanroom is a controlled environment where the concentration of airborne particles is maintained below a specified limit per cubic foot or cubic meter. To achieve this, the rooms are engineered with state-of-the-art ventilation and filtration systems in which each component is carefully selected and placed to ensure an airflow and air quality that is satisfactory for the intended use of the enclosure. controlled environment that filters pollutants like dust, airborne microbes, and aerosol particles to provide the cleanest area possible.

item	value
Cleanroom Structure.	Wall Panel, Ceiling Panel, windows, Doors, Fttings, Flooring
Applicable industries	Medical, pharmaceutical, manufacturing, etc
Equipment	Air shower, Cargo shower, Mist shower, Dynamic pass box, Static passbox, Sampling booth, Weighing booth, Dispensing booth, Medicine stability test chamber, isolator, VHP sterilizer, Biological safety chamber FFU, LAF etc.
Application	Pharmaceutical factory, hospital, medical device factory, electronics factory, food factory, cosmetics factory, etc.
Video outgoing-inspection	Provided
Machinery Test Report	Provided
Warranty of core components	1 Year
Core components	Motor
Place of Origin	China
Province	Guangdong
Qualification Documents	CE, GMP, ISO

Sandwich panel	Double steel +Sulfur oxygen magnesium	Double steel +silicon rock filler	Double steel +rock wool filler	Double steel+EPS filler	Double steel+magnesium oxide boar
Fire proofing	A	A	A	B	A
Size	1150mm width, height customized				
Thickness	12mm, 50mm, 75mm, 100mm				
Installation	1. we send engineer to customer side 2. construct out to construction team 3. customer send drawing to us for work it				

class	Maximum Particles/m <sup>3</sup>						FED STD 209E equivalent
	>0.1um	>0.2um	>0.3um	>0.5um	>1 um	>5 um	
ISO 1	10	2					
ISO 2	100	24	10	4			
ISO 3	1,000	237	102	35	8		Class 1
ISO 4	10,000	2,370	1,020	352	83		Class 10
ISO 5	100,000	23,700	10,200	3,520	832	29	Class 100
ISO 6	1,000,000	237,000	102,000	35,200	8,320	293	Class 1,000
ISO 7				352,000	83,200	2,930	Class 10,000
ISO 8				3,520,000	832,000	29,300	Class 100,000
ISO 9				35,200,000	8,320,000	293,000	Room Air

## Related Purification Equipment-----



Cleanroom Door

[View More](#)



Roll-up Door

[View More](#)



Modular Clean Room

[View More](#)




Modular Operating Room

[View More](#)



Hospital Sliding Door

[View More](#)



Stainless Steel Medical Cabinet

[View More](#)



Sandwich Board

[View More](#)



SUS 304 Washing Sink

[View More](#)



Air Shower Room

[View More](#)



Clean Bench Workbench

[View More](#)



Fan Filter Unit

[View More](#)



Pass Box

[View More](#)

## Successful Project-----



Hospital



Manufacturing



Semiconductor



Food  
Manufacturing



Life Sciences



Agriculture



Microbiology



Automotive

#### **Semiconductor Wafer Fabs (Class 10 Cleanrooms)**

\* Solution:

\* Wall-ceiling system integrated with HEPA filters

\* Grounding resistance  $< 1 \times 10^6 \Omega$ , compliant with SEMI F47 voltage sag standards

\* Case Study: 32,000m<sup>2</sup> deployed in a Taiwan 12-inch wafer fab project

#### **Facilities**

\* Key Technologies:

\* Radius corners ( $R \geq 50\text{mm}$ ) to eliminate cleaning dead zones

\* Pre-installed ports for real-time particle monitoring

#### **Data Center Retrofits**

\* Energy Efficiency Data:

\* U-value  $0.28 \text{ W/m}^2\cdot\text{K} \rightarrow 18\%$  annual cooling energy savings

**Our company**-----





Digital Bending Machine



Filter Media  
Pleating Machine



Filter Media  
Pleating Machine



Automatic PAO Testing Platform



CNC-router

Baodu International Advanced Construction Material Co.,Ltd was established in January 2010 with the office in Beijing and factory in Hebei, China.

Baodu is a designer, manufacturer, supplier and exporter of acoustic sandwich panel, insulated metal panel, profiled steel sheet, perforated metal sheet, steel structure and warehouse.

Baodu has the patented and customized double connection sandwich panel production line and imported steel plate bending machines from Swiss land and Germany.

Baodu has an annual output of 6 million square meters of acoustic sandwich panels,100000 tons of steel structures and 1 million square meters of profiled steel sheet.

Baodu has a professional design team with more than 10 years' experience, including 5 senior engineers,20 engineers, and 35

technicians. Baodu has over 70 intellectual property rights, More than 30 registered trademarks, CE certification and Russian GOST certification etc.

Baodu have successively served key projects in in Dubai, Mongolia, Philippine, Mexico, US , Australia,Iraq, etc. the key projects is as below : Mongolia MCS Group Gold Mine Project; Philippines Malivans 2x330MW Coal-fired Power Plant Project; China Eastern Airlines Maintenance Warehouse Project of Beijing Daxing Airport

; Iraq Basra Gas Turbine Combined Cycle Power Plant Expansion Project; Dubai Hasyan 4\*600MW clean coal-fired power plant project.Welcome your coming to Baodu for a visit and cooperation!



**Baodu International Advanced Construction Material Co., Ltd.**



+86 13717927965



chunlei.song@baodu.com



baodupanel.com

Room 1101, Building 6, Yard 9, Hongye Road, Daxing District, Beijing