

## Modern Prefabricated Steel Structure Warehouse Buildings For Workshop Hall Office Use

### Our Product Introduction

for more products please visit us on [baodupanel.com](http://baodupanel.com)

#### Basic Information

- Place of Origin: Hebei, China
- Brand Name: BAODU
- Certification: ISO9001, CE
- Model Number: Steel Warehouse
- Minimum Order Quantity: Discussible
- Price: Reasonable
- Packaging Details: In general, for steel structure, we use the steel frame packing to keep goods not to be broken. For sandwich panel and color steel sheet, we use the plastic packing. If the clients need special packing will according to their requirements.
- Delivery Time: 21 days
- Payment Terms: L/C, D/A, D/P, T/T, Western Union, MoneyGram
- Supply Ability: 10000 Square Meter/Square Meters per Month



#### Product Specification

- Product Name: Modern Design Prefabricated Steel Structure Warehouse Buildings For Workshop Hall & Office Use
- Color: Customized Color
- Material: Q235/Q345 Steel
- Surface Treatment: Hot Dip Galvanised Or Painted
- Wall Cladding: EPS/Rockwool/Fiberglass Wool/PU Sandwich Panel Or Steel Sheet
- Main Frame: Welded H Steel Beam, Steel Truss
- Door: Sliding Door, Rolling Door, Shutter Single Door, Color Steel
- Purlin: C/Z Galvanized Steel(Q235)
- Secondary Frame: C&Z Purlin, Brace
- Application: Storage Warehouse Structure Building

## Product Description

### Modern Design Prefabricated Steel Structure Warehouse Buildings for Workshop Hall & Office Use

#### Product Description:



The Prefab Steel Warehouse is a versatile and durable solution for various industrial and commercial needs. With a robust Steel Structure Frame Welded, this warehouse offers exceptional strength and stability, making it ideal for Workshop Industrial Steel applications.

Designed for longevity and resilience, this warehouse boasts high Weather Resistance, ensuring that your valuable assets are protected from the elements. Whether it's rain, wind, or extreme temperatures, this warehouse can withstand harsh weather conditions with ease.

The Roof cladding options for this warehouse include EPS, Rockwool, Fiberglass Wool, PU Sandwich Panel, or Steel Sheet, providing flexibility and customization based on your specific requirements. You can choose the cladding material that best suits your insulation and aesthetic preferences for your Building Galvanized Storage Light Steel Building.

Featuring a sturdy Main frame consisting of Welded H Steel Beam and Steel Truss, this warehouse offers exceptional structural integrity and load-bearing capacity. The use of high-grade materials like Q235 and Q355 ensures durability and reliability, making it a reliable choice for long-term use.

Whether you need a gable frame Steel Structure for storage, manufacturing, or any other industrial purpose, this warehouse can be tailored to meet your exact specifications. Its versatile design allows for easy customization and expansion, making it a cost-effective and efficient solution for your business needs.

#### Features:

Advantages of Steel Structures:

1. **Strength and Durability:** Steel has a high strength-to-weight ratio, making it capable of supporting heavy loads while being relatively lightweight. It also resists deformation and can withstand harsh environmental conditions.
2. **Versatility:** Steel can be molded into various shapes and sizes, allowing for innovative and flexible designs in architecture and construction.
3. **Speed of Construction:** Pre-fabricated steel components can be quickly assembled on-site, reducing construction time significantly compared to traditional materials.
4. **Cost-Effectiveness:** Although the initial material cost may be higher, steel structures often result in lower overall project costs due to faster construction times and lower maintenance requirements.
5. **Sustainability:** Steel is recyclable, making it an environmentally friendly option. Additionally, using steel can reduce waste during the construction process.
6. **Fire Resistance:** Steel structures can be treated with fire-resistant coatings, improving their performance in fire situations compared to other materials.

#### Technical Parameters:



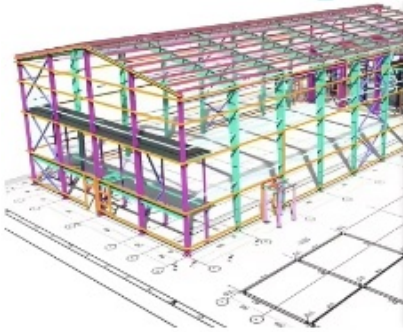
AUTODESK  
3DS MAX

SAP2000

PKPM



AUTODESK  
AUTOCAD

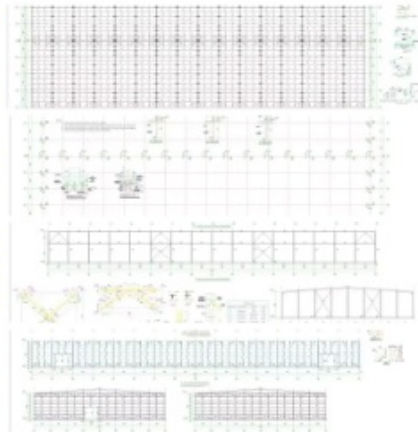


#### Steel Structural Design

We have an experienced design department, who have abundant practical experience to complete the structural design of various buildings perfectly as per Chinese design codes and local rules. The structure is reasonable and the steel consumption is cost-effective.

For overseas projects, the design work can be took by our partners, all of them are registered structural designers, and the design can be carried out as per BS-standards, US-standards, as well as the design codes of other countries.

**Detailing, 3D modeling, fabrication and installation shop drawings can be free with conditions.**



**If you are interested in our steel structure , please give us the following information:**

- 1 Location (where will be built? ) \_\_\_\_country, area
- 2 Size: Length\*width\*height \_\_\_\_mm\*\_\_\_\_mm\*\_\_\_\_mm
- 3 wind load (max. Wind speed) \_\_\_\_kn/m2, \_\_\_\_km/h, \_\_\_\_m/s
- 4 snow load (max. Snow height)\_\_\_\_kn/m2, \_\_\_\_mm
- 5 anti-earthquake \_\_\_\_level
- 6 brickwall needed or not If yes, 1.2m high or 1.5m high
- 7 thermal insulation If yes, EPS, fiberglass wool, rockwool, PU sandwich panels will be suggested; If not, the metal steel sheets will be ok. The cost of the latter will be much lower than that of the former.
- 8 door quantity & size \_\_\_\_units, \_\_\_\_ (width)mm\*\_\_\_\_ (height)mm
- 9 window quantity & size \_\_\_\_units, \_\_\_\_ (width)mm\*\_\_\_\_ (height)mm
- 10 crane needed or not If yes, \_\_\_\_units, max. Lifting weight\_\_\_\_tons; Max. Lifting height \_\_\_\_m.

**Applications:** \_\_\_\_\_



**MULTI-STOREY BUILDING  
IN PHILIPPINES**



**HEAVY WORKSHOP  
IN AUSTRALIA**



**STEEL WAREHOUSE  
IN GERMANY**



**STEEL BUILDING  
IN ZIMBABWE**



**FACTORY WAREHOUSE  
IN MALAWI**



**SHOPPING MALL  
IN PHILIPPINES**



**PREFABRICATED SHED  
IN CANADA**



**PREFAB WAREHOUSE  
IN CANADA**



**METAL WORKSHOP  
IN INDONESIA**

The Steel Warehouse is suitable for various application occasions and scenarios, such as:

**Workshop Industrial Steel:** Steel Warehouse is perfect for workshops, as it provides ample space to carry out various activities. It is also highly durable, making it a suitable choice for industrial workshops.

**Steel warehouse workshop hangar hall steel structure:** The Steel Warehouse is ideal for constructing hangars and halls for various purposes. Its sturdy structure ensures safety and reliability for the users.

**Building Galvanized Storage Light Steel Building:** The Steel Warehouse is perfect for building galvanized storage structures. Its steel structure ensures that the storage facility is safe and secure while providing ample space for storage.

### Customization:

Name	Steel Structure Building	
Main Material	Q235 - Q420 Welded H Beam And Hot Rolled Section Steel	
Surface	Painting Or Galvanizing	
Roof And Wall Panel	EPS Sandwich Board, Single Corrugated Steel Plate, Glass Cotton Colored Board for Customers' Choice	
Window	PVC Or Aluminum Alloy	
Door	Sliding Door Or Rolling Shutter Door	
Service	Design	We have experienced designers to design.
	Manufacture	We can manufacture all kinds of steel structure products according to customers' needs.
	Installation	We provide detailed drawings to ensure installation. It also provides installation, supervision and training services. We can also send a team of engineers to guide or install on site.

Packing	1. Steel structure components will be in nude packaging with proper protection. .Sandwich panels will be covered with plastic film. 3. Bolts and other accessories will be loaded into wooden boxes. 4. Container Drying Treatment. 5. According to customer's requirement
Quality Inspection	Factory Self-inspection Customer Inspection Third Party Inspection

### Support and Services:



Our Product Technical Support and Services for the Prefab Steel Warehouse include:

- Initial setup guidance and consultation
- Assistance with customization options
- Troubleshooting and technical assistance during the installation process
- Ongoing support for any product-related queries or issues
- Regular maintenance recommendations and guidelines

### Packing and Shipping:



**Product Packaging:**

The Prefab Steel Warehouse will be securely packaged in durable materials to ensure safe delivery. Each component will be carefully wrapped and protected to prevent any damage during transportation.

**Shipping:**

We offer reliable shipping services for the Prefab Steel Warehouse product. Once your order is confirmed, our team will arrange for prompt delivery to your specified location. You can track the shipment and expect timely updates on the estimated time of arrival.

### FAQ:

**Q: What is the brand name of this product?**

**A: The brand name is BAODU.**

**Q: Where is the Prefab Steel Warehouse manufactured?**

**A: The Prefab Steel Warehouse is manufactured in Hebei, China.**

**Q: What certifications does the Steel Warehouse have?**

**A: The Steel Warehouse is certified with ISO9001 and CE.**

**Q: What are the packaging details for this product?**

**A: In general, for steel structure, we use steel frame packing to prevent breakage. For sandwich panel and color steel sheet, we use plastic packing. Special packing can be arranged according to client requirements.**

**Q: What are the accepted payment terms for purchasing the Steel Warehouse?**  
**A: The accepted payment terms include L/C, D/A, D/P, T/T, Western Union, and MoneyGram.**



**Baodu International Advanced Construction Material Co., Ltd.**



+86 13717927965



chunlei.song@baodu.com



baodupanel.com

Room 1101, Building 6, Yard 9, Hongye Road, Daxing District, Beijing