

## Low-Cost Steel Plant Design Fireproof & Seismic-Resistant Custom Steel Warehouse Kit Save 20% on Labor & Material

Our Product Introduction

for more products please visit us on [baodupanel.com](http://baodupanel.com)

### Basic Information

- Place of Origin: Hebei, China
- Brand Name: BAODU
- Certification: ISO9001, CE
- Model Number: Steel Warehouse
- Minimum Order Quantity: Discussible
- Price: Reasonable
- Packaging Details: In general, for steel structure, we use the steel frame packing to keep goods not to be broken. For sandwich panel and color steel sheet, we use the plastic packing. If the clients need special packing will according to their requirements.
- Delivery Time: 21 days
- Payment Terms: L/C, D/A, D/P, T/T, Western Union, MoneyGram
- Supply Ability: 10000 Square Meter/Square Meters per Month

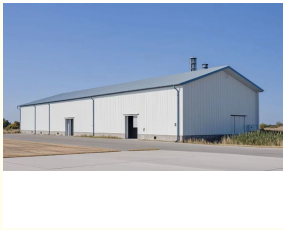


### Product Specification

- Product Name: Low-Cost Steel Plant Design Fireproof & Seismic-Resistant Custom Steel Warehouse Kit Save 20% On Labor & Material
- Keyword: Steel Structure Building Warehouse
- Fire Resistance: High
- Material: Steel
- Size: Customized Size
- Security: High
- Maintenance: Low
- Roof & Wall Panel: Color Steel Veneer, Rockwool Sandwich Panel, PU Sandwich Panel Etc
- Main Frame: Light Steel Q355 Q235
- Drawing Design: AutoCAD / PKPM / 3D3S / TEKLA
- Highlight: Prefabricated Steel Warehouse



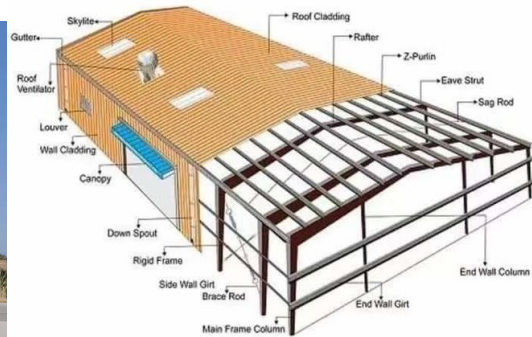
### More Images



## Product Description

### Low-Cost Steel Plant Design Fireproof & Seismic-Resistant Custom Steel Warehouse Kit Save 20% on Labor & Material

#### Product Description:



The Prefab Steel Warehouse by BAODU is a top-of-the-line building suitable for various industrial applications. With its high weather resistance, this building is designed to withstand harsh weather conditions, ensuring the safety and security of your stored goods. Constructed with efficiency in mind, the Prefab Steel Warehouse boasts a quick delivery time of 15-21 days. This means that you can have your building up and running in no time, allowing you to focus on your business operations without any delays.

When it comes to wall cladding options, the Prefab Steel Warehouse offers a choice between EPS, Rockwool, Fiberglass Wool, PU Sandwich Panel, or Steel Sheet. These versatile cladding options provide both insulation and durability, ensuring that your warehouse remains well-protected and energy-efficient.

With a tolerance level of  $\pm 1\%$ , you can trust that the Prefab Steel Warehouse is built with precision and accuracy. This high level of tolerance ensures that all components fit together seamlessly, resulting in a sturdy and reliable structure that meets your specific requirements.

As part of the BAODU brand, the Prefab Steel Warehouse is backed by a reputation for quality and excellence in the construction industry. BAODU is known for its commitment to delivering top-notch products that meet the highest standards of durability and performance.

Whether you need a building for storage, light manufacturing, or industrial purposes, the Prefab Steel Warehouse is the ideal solution. Its versatile design makes it suitable for a wide range of applications, including building galvanized storage light steel buildings, workshop industrial steel structures, and prefab warehouse construction.

#### Features:

Main Structure	Including Column & Beam, Made of welded H section Steel, Steel Grade Q355B/Q235B
	Column & Beam Connection: High Strength Bolt
	Column & Foundation Connection: Pre-embedded Anchor Bolt
Secondary Structure	Roof Purlin & Wall Purlin: C-shape or Z-shape Steel
	Knee Brace: Angle Steel
	Brace: Steel Rod
	Tie Bar: Steel Pipe
Types of wall panels and roof panels	
Applicable Regions and Scenarios	

Color Steel Sheet	Areas without winter, preferred for processing workshops and warehouses
Color Steel Sheet & Fiberglass Roll Insulation	Areas with winter but with low requirements of temperature , preferred for warehouses and workshops
Insulated Sandwich Panel	Workshops and warehouses with temperature requirements
PU Insulated Sandwich Panel	Workshops, warehouses and public facilities with high requirements of temperature for the working environment

#### Technical Parameters:



If you are interested in our steel structure , please give us the following information:

- 1 Location (where will be built? ) \_\_\_\_\_country, area
- 2 Size: Length\*width\*height \_\_\_\_\_mm\*\_\_\_\_\_mm\*\_\_\_\_\_mm
- 3 wind load (max. Wind speed) \_\_\_\_\_kn/m2, \_\_\_\_\_km/h, \_\_\_\_\_m/s
- 4 snow load (max. Snow height)\_\_\_\_\_kn/m2, \_\_\_\_\_mm
- 5 anti-earthquake \_\_\_\_\_level
- 6 brickwall needed or not If yes, 1.2m high or 1.5m high
- 7 thermal insulation If yes, EPS, fiberglass wool, rockwool, PU sandwich panels will be suggested; If not, the metal steel sheets will be ok. The cost of the latter will be much lower than that of the former.
- 8 door quantity & size \_\_\_\_\_units, \_\_\_\_\_(width)mm\*\_\_\_\_\_(height)mm
- 9 window quantity & size \_\_\_\_\_units, \_\_\_\_\_(width)mm\*\_\_\_\_\_(height)mm
- 10 crane needed or not If yes, \_\_\_\_\_units, max. Lifting weight\_\_\_\_\_tons; Max. Lifting height \_\_\_\_m.

#### Applications:



**MULTI-STOREY BUILDING  
IN PHILIPPINES**



**HEAVY WORKSHOP  
IN AUSTRALIA**



**STEEL WAREHOUSE  
IN GERMANY**



**STEEL BUILDING  
IN ZIMBABWE**



**FACTORY WAREHOUSE  
IN MALAWI**



**SHOPPING MALL  
IN PHILIPPINES**



**PREFABRICATED SHED  
IN CANADA**



**PREFAB WAREHOUSE  
IN CANADA**



**METAL WORKSHOP  
IN INDONESIA**

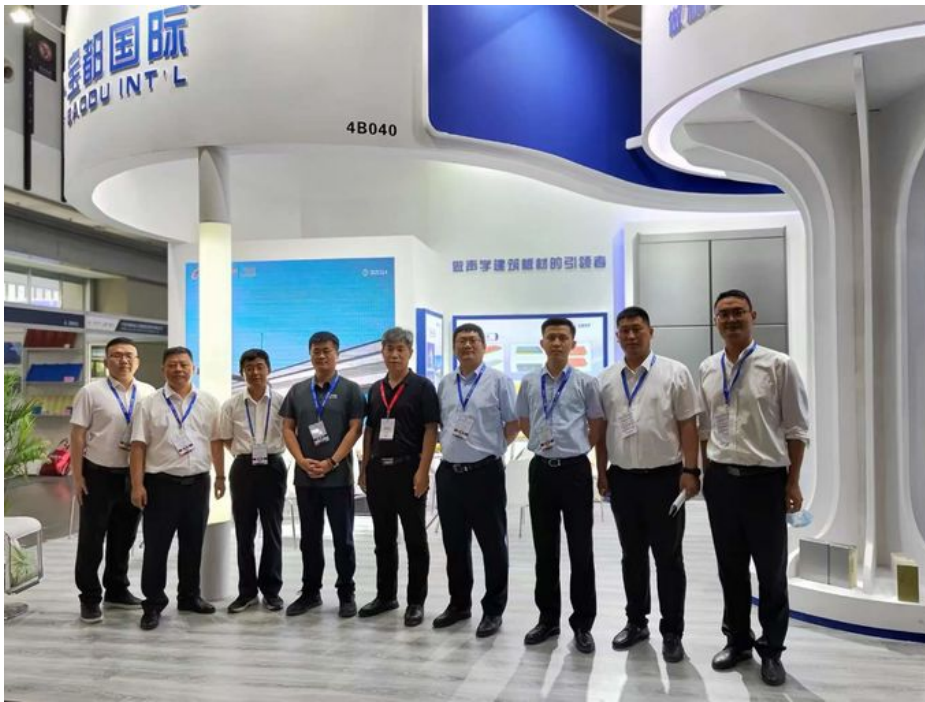
Compared with traditional buildings, steel structure building is a new building structure—the entire building made of steel. The structure mainly comprises steel beams, columns, trusses, and other parts made of section steel and steel plates. It is connected between parts and parts by welding, bolts, and rivets. The lightweight and simple structures are widely used in large factories, stadiums, super high-rise buildings, and other fields. The type of steel building structure includes the portal rigid steel frame, frame structure, truss structure, and grid structure.

Feature and application of the standard type of steel building structure:

1. Portal frame structure has simple force, clear force transmission path, and fast construction speed. It is widely used in industrial and civil buildings such as industrial, commercial, cultural, and entertainment public facilities.
2. Steel building frame structures are flexible and can form a larger space. It is widely used in the multi-story and high-rise building such as commercial office building, shopping mall, conference center and other buildings.
3. Steel truss structure is using small cross-section tube to form larger cross-section components, which are often used in industrial and civil buildings such as large span roof, bridge, tower, marine oil production platform, etc., with large span or height in the building.
4. The steel grid structure is a high-order statically indeterminate space structure composed of many rods according to certain rules with small space stress, lightweight, high rigidity, and excellent seismic resistance. It can be used as a gymnasium, exhibition hall, petrol station and hangars, etc.

### Support and Services:





The Product Technical Support and Services for the Prefab Steel Warehouse include:

- Initial consultation and design assistance to determine the best solution for your warehouse needs.
- Expert guidance on the selection and customization of steel components for optimal performance.
- Assistance with assembly instructions and on-site support if required.
- Ongoing technical support to address any questions or issues that may arise post-installation.

#### Packing and Shipping:



**Product Packaging:**

Our Prefab Steel Warehouse is carefully packaged to ensure its safe delivery to your location. It is securely wrapped and protected to prevent any damage during transportation.

**Shipping:**

We offer worldwide shipping for our Prefab Steel Warehouse. Once your order is processed, our logistics team will arrange for prompt delivery to your desired address. You can track your shipment and receive updates on its status to ensure a smooth delivery process.

**FAQ:**

**Q: What is the brand name of the Prefab Steel Warehouse?**

A: The brand name is BAODU.

**Q: Where is the Prefab Steel Warehouse manufactured?**

A: The Prefab Steel Warehouse is manufactured in Hebei, China.

**Q: What certifications does the Prefab Steel Warehouse have?**

A: The Prefab Steel Warehouse is certified with ISO9001 and CE.

**Q: What is the minimum order quantity for the Prefab Steel Warehouse?**

A: The minimum order quantity is discussible.

**Q: What are the payment terms accepted for purchasing the Prefab Steel Warehouse?**

A: The accepted payment terms are L/C, D/A, D/P, T/T, Western Union, and MoneyGram.



**Baodu International Advanced Construction Material Co., Ltd.**



+86 13717927965



chunlei.song@baodu.com



baodupanel.com

Room 1101, Building 6, Yard 9, Hongye Road, Daxing District, Beijing