



Right Angle Corner PUF Partition Panel For Warehouse Cold Room

Our Product Introduction

Basic Information

- Place of Origin: HEBEI, CHINA
- Brand Name: BAODU
- Certification: CE
- Minimum Order Quantity: 200 square meters
- Price: \$13-16 square meter
- Packaging Details: In general, for steel structure, we use the steel frame packing to keep goods not to be broken. For sandwich panel and color steel sheet, we use the plastic packing. If the clients need special packing will according to their requirements.
- Delivery Time: 15 days
- Payment Terms: L/C, D/A, D/P, T/T, Western Union, MoneyGram
- Supply Ability: 5000 Square Meters per Day

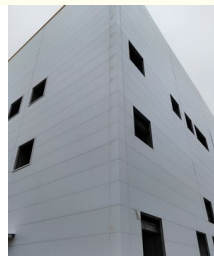
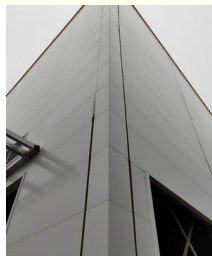


Product Specification

- Color: Customized
- Core Material: Rock Wool, Rockwool/Glasswool
- Product Name: Baodu Right Angle Corner Sandwich Panel For Warehouse And Workshop
- Length: Customer's Choice
- Application: Building, Warehouse, roofing, Wall And Roof For Building
- Width: 1000mm
- Thickness: 50/75/100/150/200mm
- Advantage: Sound Insulation, Easy Install/Waterproof/Fireproof, heat Insulation, fireproof/sound Reduction, waterproof
- Density: 60-120kg/m³
- Steel Thickness: 0.4-0.8mm
- Highlight: **Corner puf partition panel, Cold Room puf partition panel,**



More Images



Product Description

Project Case



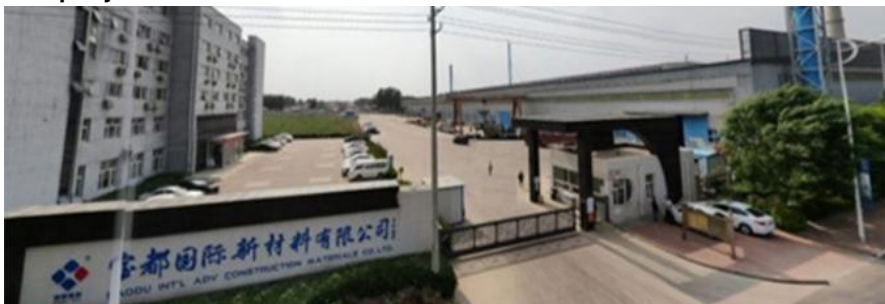
Clean Coal Fired Power Plant Phase I (4x600mw net) Project in Hasyan Dubai



East Airlines Maintenance Area of Beijing New Airport

1. Quality: imported equipment from Germany and Switzerland, professional workers who have been engaged in more than ten years, have their own research and development department, and fully meet the use standards of various countries.
2. Customized service: We arrange special person to connect according to customer needs, one-to-one service.
3. Technical support:Activity room: We provide online guidance and installation services by dedicated personnel, as well as after-sales team service 24/7.Workshop: We have nearly 50 professional engineers who can go abroad to provide technical support and guidance until all problems are solved for our customers.
4. International trade operation: We have been focusing on international trade in the construction industry for more than ten years and have accumulated various experiences from different customers in different countries. So we can keep our operations up to date with our customers and new rules.Helps in customs clearance and saves cost and time for our customers.

Company Profile



Baodu International Advanced Construction Material Co., Ltd was established in January 2010 with the office in Beijing and factory in Hebei, China. Baodu is a designer, manufacturer, supplier and exporter of industrial noise comprehensive treatment, steel structure, sandwich panel and prefab house. Baodu has an annual output of 6 million square meters of acoustic sandwich panels, 100000 tons of steel structures and 1 million square meters of floor decking sheet. The products are sold in more than 30 countries and regions around the world. Baodu has a professional design team with more than 10 years' experience, including 5 senior engineers, 20 engineers, and 35 technicians. Baodu has several energy saving and environment protection intellectual property rights, construction and environment protection design qualification, CE certification and Russian GOST certification etc. Baodu participated in the military parade village project for the 60th anniversary of China and project of Beijing Daxing International Airport. Under the guidance of China's "one belt, one road" strategy, Baodu has also undertaken overseas

projects such as the project of Thar,Pakistan coal fired power plant, Hasyan Dubai power plant and so on. Finally, welcome your coming to Baodu for a visit and cooperation!



Baodu International Advanced Construction Material Co., Ltd.



+86 13717927965



chunlei.song@baodu.com



baodupanel.com

Room 1101, Building 6, Yard 9, Hongye Road, Daxing District, Beijing